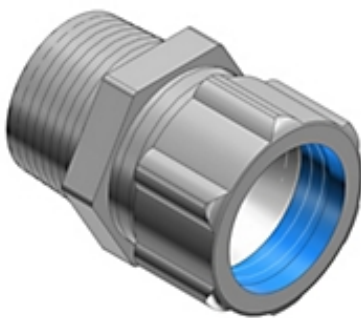




Actual



Representative

Catalog Number: 2940
Product ID: 7TBD105190R0006
UPC Number: 78621002940
EAN Number: 05414363101826
Status: A

Liquidtight Strain Relief Connector, 1 Inch, Straight, Cord Range 0.310 to 0.560 Inch, Throat Diameter 11/16 Inch, Steel Body, Glandnut, and Grip, Rubber Bushing

- Reduced overall size, fits into tighter spaces.
- Gland nut designed to restrict cable bending.
- Suitable for Ordinary, Wet or Dry locations.
- Suitable for use in hazardous locations where general purpose equipment is specifically permitted by NEC 501-4(b).

North American Specifications (UNSPSC)

UNSPSC	39121431 Cable gland connector
IGCC	4601 Cable gland connector
Brand Name	T&B
Type	Cord Connectors-Straight
Special Features	Extended Range with Superior Strain Relief
Application	Provide a Means for Passing a Cord Cable Into an Enclosure Through a Bulkhead
Standard	UL E13938, CSA 52391
Size	1 Inch
Conductor Range	0.310 to 0.560 Inch
Material	Steel
Color	Metallic
Environmental Conditions	Ordinary, Wet, or Dry Locations

European Specifications (ETIM)

ETIM	EC000441 Cable screw gland
Thread type	NPT
Nominal thread size inch/gas pipe thread	1 inch
Thread length	20.64mm
Suitable for cable diameter	7.874-14.224mm
Material	Metal
Material quality	Steel
Colour	Natural colour
Model	Straight
Strain relief	Y

Packaging

Inner Quantity	10
Inner Dimensions (inches)	6x4.5x3
Outer Quantity	100
Outer Dimensions (inches)	24.1x13x3.9
Weight Uom	23 lbs. per 100

Documents / Support Tools

Technical Drawing / Data Sheet US	Available on Website
-----------------------------------	----------------------

Header

3D Model	Available on Website
----------	----------------------

For further technical assistance, please contact us...

ABB Installation Products - USA
860 Ridge Lake Blvd.
Memphis, TN 38120
www.tnb.com

ABB Installation Products Technical Support
MS 3B-50
860 Ridge Lake Blvd.
Memphis, TN 38120

Hours: 7AM - 6PM CDT
Monday-Friday
Phone: (888) 862-3289
Fax: (901) 252-1321
Email: techsupport@tnb.com