

Allied Moulded switch and outlet boxes are molded of impact-resistant, high-strength fiberglass reinforced thermoset polyester material. Our fiberglassBOX™ “Premier Series” line of products was created for the

electrical contractor looking for nonmetallic outlet boxes with “hard box” characteristics. Allied Moulded’s fiberglassBOX line offers the following advantages:

- Non-corrosive
- Non-conductive, no ground required
- Non-distorting in high heat
- Will not melt
- Shatter resistant in cold temperatures
- Lightweight
- Heat insulator

2-Hour Wall and Ceiling Fire Classification

All Allied Moulded fiberglass boxes, including our 5305 five gang box, are classified by Underwriters Laboratories (UL®) for

use in 2-hour rated walls or ceilings.

During an actual fire test set up in a UL laboratory, Allied Moulded boxes passed all of the test criteria outlined in UL Standard 263 for both walls and ceilings.

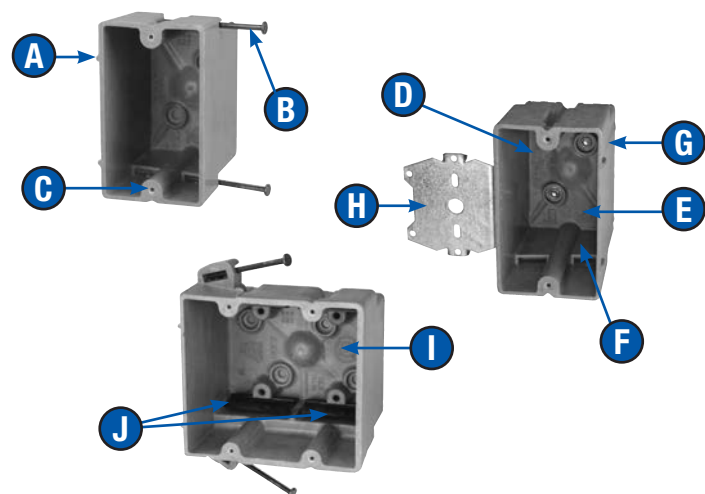
Backed by even more UL® testing, the horizontal box separation requirement outlined in the Uniform Building Code™ can be reduced to as little as three inches without using any additional fire resistive protection. Allied Moulded fiberglass boxes, up to and including two three-gangs, can be mounted in the same stud cavity of fire rated walls **with absolutely no additional fire resistant protection needed.** In fact, only Allied Moulded has documentation covering all 52 U300 Series wall configurations, eliminating the need for additional putty pads, mineral wool insulation or alternate construction saving the contractor both time and money. See pages 4 and 5 for more information.

Look for our classification CEYY “Outlet Boxes and Fittings Classified for Fire Resistance” on our website at www.alliedmoulded.com or in the UL® online certification directory at www.ul.com. Additional documentation from these testing processes is available for examination upon request.

Labor Saving Features

With innovative products designed for the electrical contractor, Allied Moulded offers the largest, most complete line of box sizes and attachment brackets in the industry for a wide variety of applications. A few of the most popular attachments are:

- The “S” snap bracket or a “W” wing bracket for secure, old work box installation
- “BH” and 16” adjustable bar hangers for maximum support of ceiling boxes used for fixture support
- “Z” brackets with metal spurs to fasten wall boxes to wood or steel studs
- The “B” adjustable stabilizing bar, available on 3, 4 or 5 gang boxes, for more secure mounting used in conjunction with nails or “Z” brackets



- Offset gauge marks on box give positive stop for the proper wall thickness
- Bright common nails or pierce-point screws fit securely in specially designed supports and are angled for easy installation
- Strip-resistant, tapered and machine tapped device holes allow device screw to be started by hand and speed installation time with adjustable torque screwdrivers
- Cubic inch capacity clearly marked and easy for contractor and inspector to locate and identify
- Proudly UL® listed
- Knockouts on fiberglass boxes are complete, reducing drafts and are easily removed with wire for no-tool installation
- Leveling ribs position face of box parallel to wall surface
- “Z” brackets are designed to securely hold box to wood or steel studs; brackets also provide proper ¼” or ½” offset
- 2-Hour Fire Rated clearly marked for easy inspector identification
- Nonmetallic Speed “K” Klamps™ dependably secure wire in box (if a knockout is inadvertently opened and not used, the Speed “K” Klamp is considered sufficient closure of the opening per UL®)



Learn more about
our fiberglassBOX™
series online

fiberglass BOX™ Two Gang

Residential Switch or Receptacle Box



9372-NMHK



2300-NC2



2300-NK



2302-NC4



2302-NK



2300-SSK



2302-SSK

Nail-On

Cu. In. Volume	Catalog Number	Component Description	Exterior Dimensions			UPC# 85339	Std. Pkg. Qty.	Std. Wt. (lb.)
			D	W	H			
30.0	9372-NMHK	Angled mid-nails, 3/16" panel stops, Speed Klamps™ - factory installed	2-3/4	4	3-3/4	10683	50	27
32.5	2300-N	Angled mid-nails, Speed Klamps™ - bulk packed	3	4	3-3/4	12125	50	29
32.5	2300-NC2	Angled mid-nails, 2 wire clamps - factory installed	3	4	3-3/4	12135	50	30
32.5	2300-NC4	Angled mid-nails, 4 wire clamps - factory installed	3	4	3-3/4	12145	50	32
32.5	2300-NK	Angled mid-nails, Speed Klamps™ - factory installed	3	4	3-3/4	12127	50	29
37.0	2302-N	Angled mid-nails, Speed Klamps™ - bulk packed	3-7/16	4	3-3/4	13060	50	31
37.0	2302-NC2	Angled mid-nails, 2 wire clamps - factory installed	3-7/16	4	3-3/4	13065	50	33
37.0	2302-NC4	Angled mid-nails, 4 wire clamps - factory installed	3-7/16	4	3-3/4	13070	50	34
37.0	2302-NK	Angled mid-nails, Speed Klamps™ - factory installed	3-7/16	4	3-3/4	13075	50	32
37.0	2302-NKRED	Angled mid-nails, Speed Klamps™ - factory installed, molded in red for fire circuits	3-7/16	4	3-3/4	96501	12	8

Steel Stud Screws

Cu. In. Volume	Catalog Number	Component Description	Exterior Dimensions			UPC# 85339	Std. Pkg. Qty.	Std. Wt. (lb.)
			D	W	H			
32.5	2300-SS	Steel stud screws for use with non-load-bearing studs 22 gauge or lighter, Speed Klamps™ - bulk packed	3	4	3-3/4	12202	50	29
32.5	2300-SSK	Steel stud screws for use with non-load-bearing studs 22 gauge or lighter, Speed Klamps™ - factory installed	3	4	3-3/4	12203	50	29
37.0	2302-SS	Steel stud screws for use with non-load-bearing studs 22 gauge or lighter, Speed Klamps™ - bulk packed	3-7/16	4	3-3/4	13080	50	29
37.0	2302-SSK	Steel stud screws for use with non-load-bearing studs 22 gauge or lighter, Speed Klamps™ - factory installed	3-7/16	4	3-3/4	13081	50	31



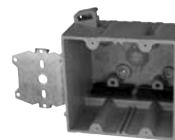
2300-Z2ZK



2300-Z2K



2300-Z4K



2302-Z4K

"Z" Hanger

Cu. In. Volume	Catalog Number	Component Description	Exterior Dimensions			UPC# 85339	Std. Pkg. Qty.	Std. Wt. (lb.)
			D	W	H			
32.5	2300-Z22	1/4" offset, "Z" hanger each side of box, Speed Klamps™ - bulk packed	3	4	3-3/4	12500	12	13
32.5	2300-Z2ZK	1/4" offset, "Z" hanger each side of box, Speed Klamps™ - factory installed	3	4	3-3/4	12501	12	13
32.5	2300-Z2	1/4" offset, "Z" hanger, Speed Klamps™ - bulk packed	3	4	3-3/4	12400	50	39
32.5	2300-Z2K	1/4" offset, "Z" hanger, Speed Klamps™ - factory installed	3	4	3-3/4	12401	50	39
32.5	2300-Z4	1/2" offset, "Z" hanger, Speed Klamps™ - bulk packed	3	4	3-3/4	12700	50	38
32.5	2300-Z4K	1/2" offset, "Z" hanger, Speed Klamps™ - factory installed	3	4	3-3/4	12701	50	39
37.0	2302-Z4	1/2" offset, "Z" hanger, Speed Klamps™ - bulk packed	3-7/16	4	3-3/4	13082	50	40
37.0	2302-Z4K	1/2" offset, "Z" hanger, Speed Klamps™ - factory installed	3-7/16	4	3-3/4	13083	50	42

All dimensions are in inches unless otherwise noted.

See page 7 for Attachment Coding suffix descriptions.

Old Work/Manufactured Housing Boxes

Flush-Device Box
UL File No. E30594