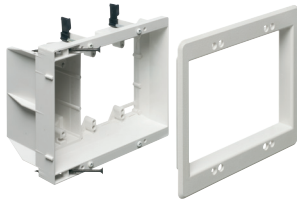
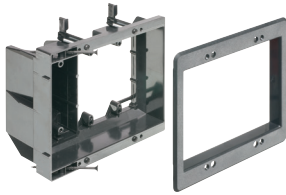


Multiple Gang Recessed TV BOX™ for Power and Low Voltage



TVBU507



TVBU507BL

Includes...

Recessed combo box; (1) trim plate; (1) decorator style cover plate; and installation screws.

For new or existing construction (TVBR505K for old work only). Non-metallic, recessed combo boxes for power and low voltage for class 2 wiring of satellite or cable TV, speakers, etc.

FEATURES AND BENEFITS

- Recessed combo box allows you to mount LCD/plasma TVs and other system components flush against the wall
- For new work... Use supplied screws to install on stud. For convenience, box positioning tabs are set for 1/2" or 5/8" drywall
- Trim plate is textured/paintable and covers edges of cut wall surface
- Mounting wings hold bracket securely against wall when screws are tightened
- For walls up to 1-1/2" thick
- Use with Arlington's SCOOP™ series entrance hoods and plates (see pages O-7 to O-9)

CATALOG NUMBER	UPC/DCI/NAED MFG #018997	DESCRIPTION	UNIT PKG	STD PKG	DIM A	DIM B	DIM C
TVBU505*	09680	2-Gang, White, (1) Power/ (1) LV	1	4	6.942	6.254	3.750
TVBU505BL*	09681	2-Gang, Black, (1) Power/ (1) LV	1	4	6.942	6.254	3.750
TVBU505K*†	09682	Kit, 2-Gang, White, (1) Power/ (1) LV	1	4	6.942	6.254	3.750
TVBR505K*	09670	Kit, 2-Gang, White, (1) Power/ (1) LV	1	4	6.942	6.254	3.750
TVBU507	09661	3-Gang, White, (1) Power/ (2) LV	1	4	6.818	7.930	3.875
TVBU507BL	09662	3-Gang, Black, (1) Power/ (2) LV	1	4	6.818	7.930	3.875

Add suffix "GC" to Catalog # when ordering in Canada to include grounding clip, for example TVBU505GC.

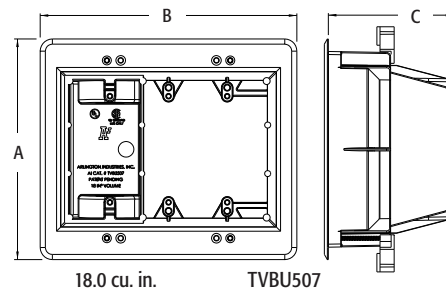
*Optional box covers available on page Q-3.

† Includes brush-style cable entry device.



PATENTED.

Scan For Video



TVBR505K Kit

Includes: Recessed combo box; (1) tamper-resistant duplex receptacle; (1) CEDH1 & (1) CED130; and (1) wall plate.

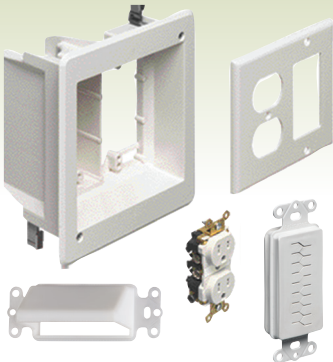
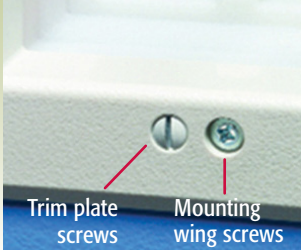


Photo B - Screws



INSTALLATION INSTRUCTIONS

NEW WORK (TVBU505 SHOWN)



Attach box to stud. Use tabs for proper positioning of box depth. See [step 2](#).



Positioning tabs are set for 1/2" or 5/8" drywall.

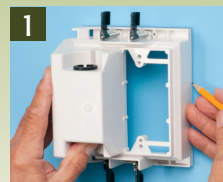


Attach paintable trim plate with screws provided. See [Photo B](#).



Tighten mounting wing screws to pull the box securely against the wall board. See [Photo B](#).

RETROFIT WORK (TVBU505 SHOWN)



Using box, without trim plate as a template, mark location. Cut hole.



Attach trim plate to box. See [Photo B](#). Pull wire/cables. Install box assembly in opening.



Tighten mounting wing screws to pull the box securely against the wall board. See [Photo B](#).



TVBU505 with power in one side; low voltage in the other. CED13 (page O-6) used to secure wall plate to box.

FOR FLUSH-TO-THE-WALL MOUNTING OF FLAT SCREEN TVs

PLASTIC TV BOX™

RECESSED POWER/LOW VOLTAGE COMBO BOXES



LISTED POWER/LOW VOLTAGE BOX

TVBU505 with CED130
CABLE ENTRY DEVICE



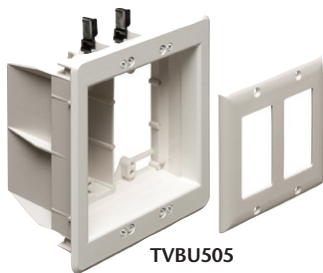
for **NEW WORK** or **RETROFIT**



CED130 with slotted cover
REVERSED for **RECESSED LOOK**



CED135 with brush cover



TVBU505

Arlington's **PLASTIC TV BOX™** – recessed combination power/low voltage boxes offer the secure, easy way to mount TVs flush against a wall.

The job looks great. Plugs and connectors stay inside these Listed boxes without extending past the wall. Available in 2-, 3- and 4-gang styles for retrofit or new work. Each offers power and/or low voltage in one or more of the other openings. There's a box to fit nearly any application!

And a cable entry device with slotted or brush cover to organize your low voltage cable bundle.

- **NEW WORK** Box screw-mounts to stud
- **RETROFIT** Mounting wing screws pull box against wall
- Non-metallic box with paintable white trim plate
- Optional covers available



CED135



Arlington®

Made in USA 

2-GANG TVBU505

3-GANG TVBU507

4-GANG TVB613

