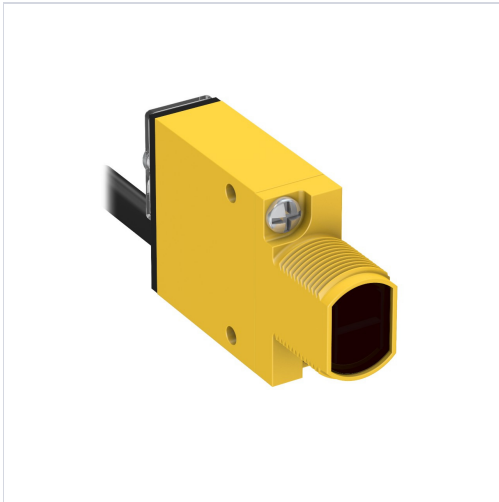


SM312DQDP

▶ MINI-BEAM SERIES INDUSTRY STANDARD SENSOR



MINI-BEAM: Diffuse

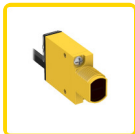
Range: 380 mm; Input: 10-30 V dc

Output: Bipolar: 1 NPN; 1 PNP

6 in Pigtail QD

Part Number: 29539

CERTIFICATIONS



SPECIFICATIONS

Sensing Mode (General)	Proximity
Sensing Mode (Detailed)	Diffuse
Housing Style	Rectangular w/M18 Mount

Max Sensing Range (mm)	380
Outputs	Bipolar (NPN & PNP)
Power Supply/Supply Voltage	10-30 V dc
Connection	Pigtail QD
Quick Disconnect Type	M12 (Euro)
Sensing Beam	Infrared LED
Operation	Light/Dark Operate
Max Op. Temp. (°C)	70
Min Op. Temp. (°C)	-20
Output response time (ms)	1
Special Feature: Intrinsically Safe	No
Special Feature: Remote Teach	No
Special Feature: Water Detection	No
IP Rating	IP67
Delay at Power-up (ms)	100
Repeatability (μs)	300
Number of Pins	4
NEMA Rating	NEMA 1, 2, 3, 3S, 4, 4X, 6, 12
Max Op. Relative Humidity [%]	90% @ 50°C
Lens Material	Acrylic
Adjustments	Potentiometer

Indicator	LEDs
Opposed Mode Emitter/Receiver	N/A
Feature: Timing (Hold/Delay)	No
Feature: Encapsulated	Yes
Feature: Hazardous Area	No
Feature: Audible	No
Input/Output	Discrete



Banner Engineering Corp. | 9714 Tenth Avenue North | Minneapolis, MN 55441 | United States of America