

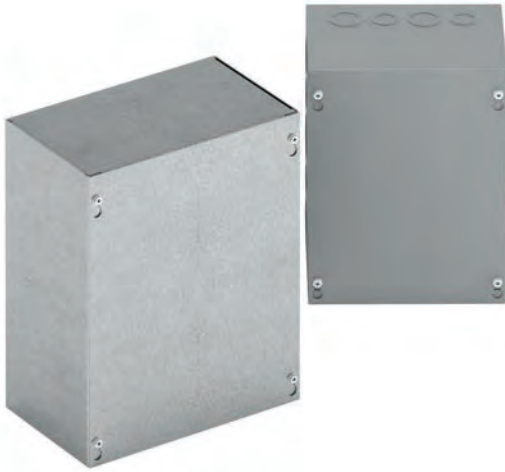
Type 1, 3, & 3R Enclosures

Junction Boxes

Type 1 Screw Cover - Painted & Galvanized

Data and Illustration Sheet

Type 1, 3, & 3R Enclosures



Application

- Used as wiring boxes, junction and pull boxes
- Protects against contact with enclosed equipment

Standards

- UL 50 listed, Type 1
- CSA C22.2 No. 40 certified, Type 1
- Conforms to NEMA standard for Type 1

Finish

- Wash and phosphate undercoat or galvanized steel
- ANSI 61 gray acrylic electrocoat finish

Accessories

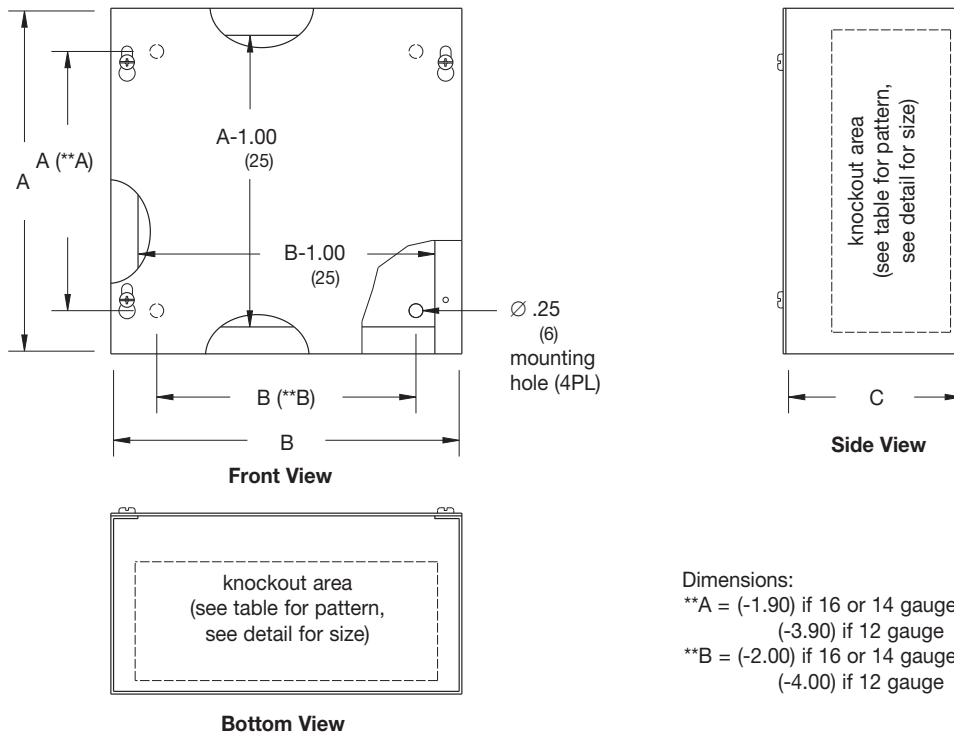
- Ground lug kit
- Touch-up paint
- See Accessories section

Construction

- Enclosure and cover are fabricated from code gauge steel or galvanized steel, (see table)
- Enclosure body has mounting holes on the back
- Enclosures are available with or without knockouts on the sides, top and bottom ends
- Cover is secured to the body with plated hex head combo screws
- Keyhole slots provided in the cover allow easy access to the inside without removing the screws
- #10-32 tapped hole provision for optional ground lug kit

Discount Schedule: A2

Subclass: AN0 & AX1



Notes: Cooper B-Line can provide special sizes, finishes and other modifications. Consult the factory for your special requirements.
Dimensions are in inches. Millimeters shown are for reference only. Data subject to change without notice.

Type 1, 3, & 3R Enclosures

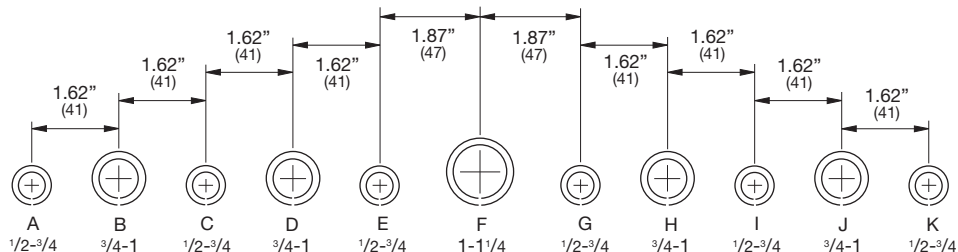
Junction Boxes

Type 1 Screw Cover - Painted & Galvanized

Catalog Number

Type 1, 3, & 3R Enclosures

Enclosure Catalog Number				Enclosure Size Height x Width x Depth A x B x C		Gauge	Knockout Pattern	Knockout Pattern
Painted		Galvanized						
KO	No KO	KO	No KO	in.	mm		Each Side	Top & Bottom
666 SC	666 SC NK	666 SCGV	666 SCGV NK	6.00 x 6.00 x 6.00	152 x 152 x 152	16	(CDE)	(CDE)
866 SC	866 SC NK	866 SCGV	866 SCGV NK	8.00x 6.00 x 6.00	203 x 152 x 152	16	(GHIJ)	(CDE)
886 SC	886 SC NK	886 SCGV	886 SCGV NK	8.00 x 8.00 x 6.00	203 x 203 x 152	16	(GHIJ)	(GHIJ)
1086 SC	1086 SC NK	1086 SCGV	1086 SCGV NK	10.00 x 8.00 x 6.00	254 x 203 x 152	16	(DEFGH)	(GHIJ)
10106 SC	10106 SC NK	10106 SCGV	10106 SCGV NK	10.00 x 10.00 x 6.00	254 x 254 x 152	16	(DEFGH)	(DEFGH)
--	1266 SC NK	--	--	12.00 x 6.00 x 6.00	305 x 152 x 152	16	--	--
--	1286 SC NK	--	1286 SCGV NK	12.00 x 8.00 x 6.00	305 x 203 x152	16	--	--
12106 SC	12106 SC NK	12106 SCGV	12106 SCGV NK	12.00 x 10.00 x 6.00	305 x 254 x152	16	(DEFGH)	(DEFGH)
12126 SC	12126 SC NK	12126 SCGV	12126 SCGV NK	12.00 x 12.00 x 6.00	305 x 305 x152	16	(DEFGH)	(DEFGH)
--	15156 SC NK	--	15156 SCGV NK	15.00 x 15.00 x 6.00	381 x 381 x152	16	--	--
16126 SC	16126 SC NK	16126 SCGV	16126 SCGV NK	16.00 x 12.00 x 6.00	406 x 305 x152	16	(CDEFGHI)	(DEFGH)
16166 SC	16166 SC NK	16166 SCGV	16166 SCGV NK	16.00 x 16.00 x 6.00	406 x 406x152	16	(CDEFGHI)	(BCDEFGHIJ)
18126 SC	18126 SC NK	18126 SCGV	18126 SCGV NK	18.00 x 12.00 x 6.00	457 x 305x152	16	(BCDEFGHIJ)	(DEFGH)
--	18156 SC NK	--	18156 SCGV NK	18.00 x 15.00 x 6.00	457 x 381x152	16	--	--
18186 SC	18186 SC NK	18186 SCGV	18186 SCGV NK	18.00 x 18.00 x 6.00	457 x 457x152	16	(BCDEFGHIJ)	(BCDEFGHIJ)
--	24126 SC NK	--	24126 SCGV NK	24.00 x 12.00 x 6.00	610 x 305x152	16	--	--
24186 SC	24186 SC NK	24186 SCGV	24186 SCGV NK	24.00 x 18.00 x 6.00	610 x 457x152	16	(BCDEFGHIJ)	(BCDEFGHIJ)
--	24206 SC NK	--	24206 SCGV NK	24.00 x 20.00 x 6.00	610 x 508x152	14	--	--
24246 SC	24246 SC NK	24246 SCGV	24246 SCGV NK	24.00 x 24.00 x 6.00	610 x 610x152	14	(BCDEFGHIJ)	(BCDEFGHIJ)
--	30186 SC NK	--	30186 SCGV NK	30.00 x 18.00 x 6.00	762 x 457 x 152	16	--	--
30246 SC	30246 SC NK	30246 SCGV	30246 SCGV NK	30.00 x 24.00 x 6.00	762 x 610 x 152	14	(BCDEFGHIJ)	(BCDEFGHIJ)
--	30306 SC NK	--	30306 SCGV NK	30.00 x 30.00 x 6.00	762 x 762 x 152	12	--	--
36246 SC	36246 SC NK	--	36246 SCGV NK	36.00 x 24.00 x 6.00	914 x 310 x 152	14	(BCDEFGHIJ)	(BCDEFGHIJ)
--	36306 SC NK	--	36306 SCGV NK	36.00 x 30.00 x 6.00	914 x 762 x 152	12	--	--
--	36366 SC NK	--	36366 SCGV NK	36.00 x 36.00 x 6.00	914 x 914 x 152	12	--	--
--	48366 SC NK	--	48366 SCGV NK	48.00 x 36.00 x 6.00	1219 x 914 x 152	12	--	--
--	48486 SC NK	--	48486 SCGV NK	48.00 x 48.00 x 6.00	1219 x 1219 x 152	12	--	--
888 SC	888 SC NK	888 SCGV	888 SCGV NK	8.00 x 8.00 x 8.00	203 x 203 x 203	16	(GHIJ)	(GHIJ)
--	10108 SC NK	--	10108 SCGV NK	10.00 x 10.00 x 8.00	254 x 254 x 203	16	--	--
12128 SC	12128 SC NK	--	12128 SCGV NK	12.00 x 12.00 x 8.00	305 x 305 x 203	16	(DEFGH)	(DEFGH)
16128 SC	16128 SC NK	--	16128 SCGV NK	16.00 x 12.00 x 8.00	406 x 305 x 203	16	(CDEFGHI)	(DEFGH)
18128 SC	18128 SC NK	--	18128 SCGV NK	18.00 x 12.00 x 8.00	457 x 305 x 203	16	(BCDEFGHIJ)	(DEFGH)
18188 SC	18188 SC NK	--	18188 SCGV NK	18.00 x 18.00 x 8.00	457 x 457 x 203	16	(BCDEFGHIJ)	(BCDEFGHIJ)
24128 SC	24128 SC NK	--	24128 SCGV NK	24.00 x 12.00 x 8.00	610 x 305 x 203	16	(BCDEFGHIJ)	(DEFGH)
24188 SC	24188 SC NK	--	24188 SCGV NK	24.00 x 18.00 x 8.00	610 x 457 x 203	16	(BCDEFGHIJ)	(BCDEFGHIJ)
--	24208 SC NK	--	24208 SCGV NK	24.00 x 20.00 x 8.00	610 x 508 x 203	14	--	--
24248 SC	24248 SC NK	--	24248 SCGV NK	24.00 x 24.00 x 8.00	610 x 610 x 203	14	(BCDEFGHIJ)	(BCDEFGHIJ)
30248 SC	30248 SC NK	30248 SCGV	30248 SCGV NK	30.00 x 24.00 x 8.00	762 x 610 x 203	14	(BCDEFGHIJ)	(BCDEFGHIJ)
--	30308 SC NK	--	30308 SCGV NK	30.00 x 30.00 x 8.00	762 x 762 x 203	12	--	--
36248 SC	36248 SC NK	--	36248 SCGV NK	36.00 x 24.00 x 8.00	914 x 610 x 203	14	(BCDEFGHIJ)	(BCDEFGHIJ)
--	36308 SC NK	--	36308 SCGV NK	36.00 x 30.00 x 8.00	914 x 762 x 203	14	--	--



Conduit Sizes Knockout Detail - Note: See table for applicable knockout pattern.

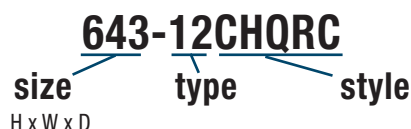
Notes: Dimensions are in inches. Millimeters shown are for reference only. Data subject to change without notice.

Catalog Numbering Legend

Catalog Numbering Legend

Cooper B-Line's catalog numbering system for industrial and commercial enclosures and wireway is a logical, easy-to-use system. It was developed so our customers could easily order or find a Cooper B-Line catalog number. Referenced in each catalog number is the size, type designation, and style. See pages v, vi, and vii for the full catalog numbering legend.

Industrial Enclosures



Enclosure Size Listed left of dash (-)

Enclosure Type Immediately follows dash (-)

1	Type 1
4	Type 4
4X	Type 4X
12	Type 12
12F	Type 12 Fiberglass
4XA	Type 4X Aluminum
4XF	Type 4X Fiberglass
4XS	Type 4X Type 304 SS
4XSS6	Type 4X Type 316L SS

Enclosure Style Immediately follows Type designation

3PT	3-Point Locking
CD (as a prefix)	Center Mounted Disconnect Enclosure
CHC	Continuous Hinge Cover
CHQRC	Continuous Hinge Quick-Release Cover
CHSC	Continuous Hinge Screw Cover
D	Double-Door
D3PT	Double-Door w/ 3-Point Locking
DA	Dual-Access
ES (as a prefix)	EnviroShield, Free Standing
FD (as a prefix)	Flange Mounted Disconnect Enclosure
FTC	Flange Trough Collar
FD	Floor-Standing, Double-Door
FD3PT	Floor-Standing, Double-Door w/ 3-Point Locking
FDQT	Floor-Standing, Double-Door w/ Quarter-Turn Latches
FS	Free-Standing
FS3PT	Free-Standing w/ 3-Point Locking
FSD	Free-Standing, Double-Door
FSD3PT	Free-Standing, Double-Door w/ 3-Point Locking
FSDA3PT	Free-Standing, Dual-Access w/ 3-Point Locking
FSDDA	Free-Standing, Double-Door, Dual-Access
FSDDA3PT	Free-Standing, Double-Door, Dual-Access w/ 3-Point Locking

FSDA	Free-Standing, Dual-Access
FSQT	Free-Standing, Double-Door w/ Quarter-Turn Latches
LC	Lift-Off Cover
M (as a prefix)	Modular
QT	Quarter Turn Latches
SC	Screw Cover
TE	Terminal Enclosure

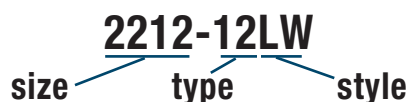
Fiberglass Enclosure Style Immediately follows Type designation

CHSC	JIC Hinge Cover w/ Two Screws
CHQRC	JIC Hinged Cover w/ Quick Release Pad Lockable Latches
CHQRCW	JIC Hinged Cover (Window) w/ Quick-Release Pad Lockable Latches
D	Double Door Wallmount
FS	Free Standing Single Door
FSD	Free Standing Double Door
LC	JIC Lift-Off Screw Cover
PB__	Multi-Hole Pushbutton Enclosure
PV__	Vertical In-Line Pushbutton Enclosure
RHCF	Type 3R Panel Enclosure
SC	Small Junction Box
SDF	Premier Series Hinge Cover w/ Two Screws
SDFQR	Premier Series Hinge Cover w/ Quick-Release Pad Lockable Latches
SDFQRCC	Premier Series Clear Cover w/ Quick-Release Pad Lockable Latches

Premier Enclosure Style Immediately follows Type designation

DSC	Single-Door Disconnect
FM	Flush-Mount
SD	Single-Door
SDSS4	Single-Door Type 304 SS
SDSS6	Single-Door Type 316L SS
SDW	Single-Door w/ Window
SDWSS4	Single-Door w/ Window Type 304 SS
TD	Double-Door

Industrial Wireway



Wireway Size Listed left of dash (-)

Wireway Type Immediately follows dash (-)

12	NEMA 12
4X	NEMA 4X
4XS	NEMA 4X Type 304 Stainless Steel

Wireway Styles Immediately follows Type designation

FW	Feed-Through Wireway
LW	Lay-In Wireway
WT	Wiring Trough

Lay-In Wireway Fittings

LAHM	Adapter for Hammond [†] Mfg.
LAHW	Adapter for Hoffman [†] or Wiegmann [†]
LARR	Adapter for Robroy [†] or Rittal [†]
LASD	Adapter for Square D [†]
BK	Barrier Kit
C	Coupling
LBC	Box Connector
LBH	Hanger, Bracket
LC	Cross, Top Open
LCF	Cut-Off Fitting/Lay-in Style
LCP	Closure Plate
LDH	Hanger, Drop
LE9A	90° Elbow, Top Open
LE9AC	90° Elbow, Outside-Top Open
LE9B	90° Elbow, Inside Open
LE9C	90° Elbow, Outside Open
LE9TC	90° Transposition Elbow, CW
LE9TCC	90° Transposition Elbow, CCW
LE15A	15° Elbow, Top Open
LE45A	45° Elbow, Top Open
LE45B	45° Elbow, Inside Open
LE45C	45° Elbow, Outside Open
LJB	Junction Box
LN1	1" Nipple
LN2	2" Nipple
LN3	3" Nipple
LR	Reducer
LSP	Sealing Plate, Flat
LTA	Tee, Top Open
LTF	Telescopic Fitting
LTSC	Transposition, Clockwise
LTSCC	Transposition, Counter Clockwise

[†] Marks shown are property of respective owners.

Feed-Through Fittings

BH	Hanger, Bracket
BK	Barrier Kit
DH	Hanger, Drop
FBC	Box Connector
FC	Cross
FCF	Cut-Off Fitting
FCP	Closure Plate
FE9	90° Elbow
FE45	45° Elbow
FFF	Flexible Fitting
FGK	Gasket Kit
FN1	1" Nipple
FN2	2" Nipple
FN3	3" Nipple
FN6	6" Nipple
FRC	Reducer Center
FRE	Reducer Edge
FT	Tee
FTF	Telescopic Fitting

Commercial Wireway



Wireway Size Listed First

Screw Cover Wireway Style Follows Size designation

G	Type 1 Screw Cover Wireway
GGV	Type 1 Screw Cover Wireway Galvanized

Screw Cover Wireway Fittings

C	Wireway Connector
E	Wireway End
FH	Wireway Hanger
FL	Hinged Elbow
FR	Wireway Reducer
FTF	Telescopic Fitting
GF	Wireway End Flange
L	Elbow
L SWEEP	Sweep Elbow
LTX	Elbow-Tee-Cross
T	Wireway Tee
X	Wireway Cross

Catalog Numbering Legend

Commercial Wireway cont.

Hinge Cover Wireway Style Follows Size designation

3RHS	EnviroShield™ Type 3R Wireway, Painted
3RAHS	EnviroShield™ Type 3R Wireway, Aluminum
HS	Type 1 Quick-Connect Hinge Cover Wireway

Hinge Cover Wireway Fittings

HSA	Wireway Connector - Adapter
HSC	Wireway Connector
HSE	Wireway End
HSF	Wireway End Flange
HSL	45° Elbow
HSL	90° Elbow
HST	Wireway Tee
HSU	Wireway Connector - Universal
HSX	Wireway Cross

Wire Trough Style Follows Size designation

GRT	Type 3R Screw Cover Wireway, Painted
GRTGV	3R Screw Cover Wireway, Galvanized
GTGV	Type 1 Wiring Trough, Galvanized

Commercial Enclosures

884 HC
 size style
 H x W x D

Enclosure Size Listed First

Enclosure Style Follows Size designation

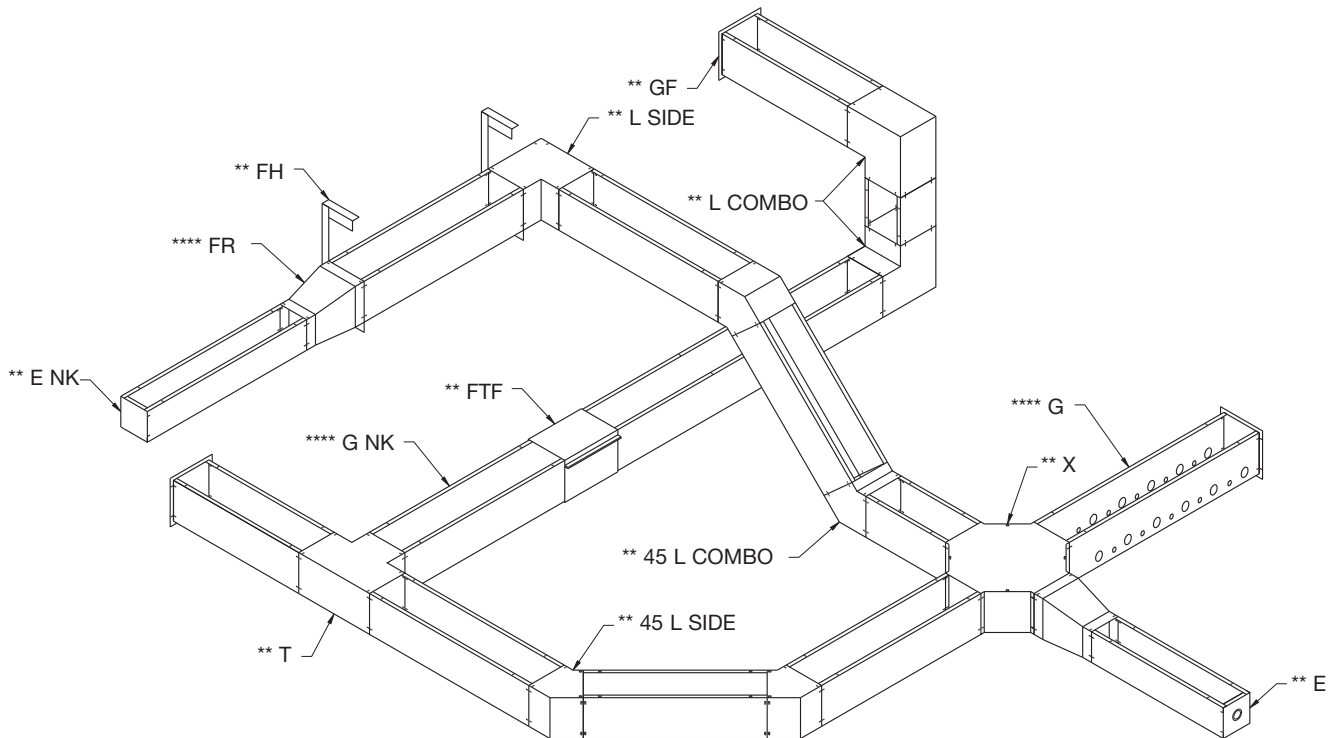
DRHC	Type 3R Double-Door Hinge Cover
HC	Type 1 Hinge Cover
HC NK	Type 1 Hinge Cover No Knockouts
HRTCT	Type 3R Current Transformer Hinge Cover
P	Type 1 Locking Enclosure with Perforated Panel
RHC	Type 3R Hinge Cover
RTC	Type 3R Telephone Termination Cabinet
RTCT	Type 3R Current Transformer Screw Cover
RTHC	Type 3R Hinge Cover
RTHC NK	Type 3R Hinge Cover No Knockouts
RTSC	Type 3R Screw Cover
RTSCGV	Type 3R Screw Cover Galvanized
RTSCGV NK	Type 3R Screw Cover Galvanized No Knockouts
RTSC NK	Type 3R Screw Cover No Knockouts
SC	Type 1 Screw Cover
SCG	Type 3 Gasketed Screw Cover
SCGV	Type 1 Screw Cover Galvanized
SCGV NK	Type 1 Screw Cover Galvanized No Knockouts
SC NK	Type 1 Screw Cover No Knockouts
TCF	Type 1 Telephone Termination Cabinet/Flush Mount
TCS	Type 1 Telephone Termination Cabinet/Surface Mount
WPSC	Type 3 Screw Cover

Accessories

AHP	Adjustable Hinge Panel Kit
AMK	Adjustable Mounting Kit
APK	Adjustable Panel Kit
AP	Aluminum Panel
BAP	Blank Adapter Plate
BK	Barrier Kit
BP	Baffle Plate
DF	Dead Front Panel
DK	Drop Shield Kit
DSTOPK	Door Stop Kit
EH	External Hinge
ES	Enclosure Stabilizer
FAS	Filter Adhesive Spray
FLT	Filters
FLWK	Frameless Window Kit
FSHELF	Folding Shelf Kit
GP	Galvanized Panel
GP	Gland Plates
HWK	Hinged Window Kits
IC	Inspection Cover
JICSPK	JIC Swing Panel Kit
KL	Keyed Lock
LPK	Louver Plate Kits
MC	Mounting Channels
MMF	Modular Mounting Frame
NSPK	NEMA Swing Panel Kit
P	Panel
PF	Fiberglass Panel
PCK	Panel Conversion Kit
PLH	Panel Lifting Hooks
PMK	Pole Mounting Kits
PS	Panel Support Kit
PP	Perforated Panel
PWK	Plexiglass Window Kit
QRCS	Quick-Release Cover Screw
RMA	Rack Mounting Angles
SCS	Slotted Cover Screw
SF	Swing-Out Rack Frames
SL	Standard Latch
SP	Sealing Plate
SP	Stainless Panel
SP	Swing-Out Panel
TB	Terminal Block
TS	Terminal Strap
TSK	Terminal Strap Support Kit
WB	Wood Back Board
WMHK	Wall-Mount Handle, Key Locking
WMHNL	Wall-Mount Handle, Non-Locking
WMHPTO	Wall-Mount Handle, Padlockable
WMK	Wall Mounting Kit



Wireway Nomenclature



This drawing is for illustration purposes only. It depicts how most Cooper B-Line Type 1 screw cover wireway straight sections and fittings could be used in an actual wireway run. Covers have been omitted in many instances to more clearly show the lay-in feature. Straight sections and fittings can be combined in many different configurations to accommodate any wiring application. The nomenclature depicts Type 1 screw cover wireway in ANSI 61 gray painted steel. In addition, Cooper B-Line also offers Type 1 galvanized screw cover wireway, Type 1 Quick-Connect hinge cover wireway, Type 3R wireway, NEMA 12 and NEMA 4 / 4X feed-through wireway, and NEMA 12 lay-in wireway.

NOMENCLATURE

**** FR	Reducer	** GF	End flange
**** G	Straight section with knockouts	** L COMBO	90° Elbow combo opening
**** G NK	Straight section without knockouts	** L SIDE	90° Elbow side opening
** E	End with knockouts	** 45 L COMBO	45° Elbow combo opening
** ENK	End without knockouts	** 45 L SIDE	45° Elbow side opening
** FH	Hanger	** T	Tee
** FTF	Telescopic fitting	** X	Cross

**** Specify height x depth x length

** Specify height x depth