

Steel Square Covers

COVERS FOR 4" SQUARE BOXES – CUBIC INCH CAPACITY (SEE BELOW)

UL LISTED

#8-32 Screw Used on Covers



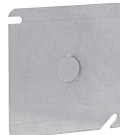
TP472



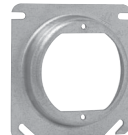
TP472RED



TP474



TP478
TP487



TP473, TP475,
TP476, TP477,
TP479, TP483



TP850*



TP854*



AMR0

Cat. #	Description	Unit Qty.	Wt. Lbs. Per 100	Capacity Cu. In.
TP472†	Flat Blank	50	31	-
TP472RED	Flat Blank, Red	50	31	-
TP474†	Flat, Open with Ears 2 3/4"	50	21	-
TP478†	Flat, with 1/2" KO	50	31	-
TP487†	Flat, with 3/4" KO	50	29	-
TP473†	Raised 1/4", Open with Ears 2 3/4"	50	23	1.3
TP476†	Raised 1/2", Open with Ears 2 3/4"	50	26	4.0
TP477†	Raised 5/8", Open with Ears 2 3/4"	50	27	5.0
TP475†	Raised 3/4", Open with Ears 2 3/4"	25	31	6.0
TP479†	Raised 1", Open with Ears 2 3/4"	25	34	7.0
TP483†	Raised 1 1/4", Open with Ears 2 3/4"	25	37	8.5
AMR0**	3/4" - 1 1/2" Round Adjustable Mud Ring	25	44	6.1

Air Plenum

TP850*	Flat Blank Gasketed with Captive Screws	25	31	-
TP854*	Flat Ring Double Gasketed	25	12	-

*For Air Plenum (no mounting holes) - not UL Listed.

**ETL listed.

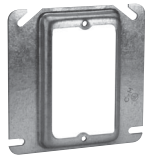
†CSA certified.

MUD RINGS FOR 4" SQUARE STEEL OUTLET BOXES

UL LISTED



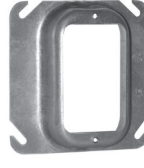
TP480



TP482, TP484,
TP486, TP489



TP494



TP488, TP490



TP496, TP499,
TP500, TP501,
TP502



AMR1



AMR2



AMR158

Cat. #	Description	Unit Qty.	Wt. Lbs. Per 100	Capacity Cu. In.
One Device				
TP480†	Flat	50	20	-
TP482†	1/4" Raised	50	21	1.8
TP484†	1/2" Raised	50	23	3.8
TP489†	5/8" Raised	50	26	4.3
TP486†	3/4" Raised	50	30	5.5
TP488	1" Raised	50	34	6.8
TP490	1 1/4" Raised	25	39	8.5
AMR1**	3/4" - 1 1/2" Raised Adjustable	25	47	-
AMR158**	5/8" - 1 1/4" Raised Adjustable	25	44	6.0
Two Device				
TP494†	Flat	50	12	-
TP496†	1/4" Raised	50	13	3.0
TP498†	1/2" Raised	50	18	6.0
TP499†	5/8" Raised	50	22	8.0
TP500†	3/4" Raised	50	24	9.0
TP501	1 1/4" Raised	25	31	14.0
TP502	1" Raised	25	30	11.7
AMR2**	5/8" - 1 1/2" Raised Adjustable	25	50	11.3

**cULus Listed.

†CSA certified.

‡Slotted design for use with 4" square box partitions.

Steel Square Covers

COVERS FOR 4" SQUARE BOXES – CUBIC INCH CAPACITY (SEE BELOW)

UL LISTED

CSA LISTED

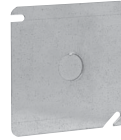
#8-32 Screw Used on Covers



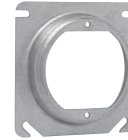
TP472



TP474



TP478
TP487



TP473, TP475,
TP476, TP477,
TP479, TP483

Cat. #	Description	Unit Qty.	Wt. Lbs. Per 100	Capacity Cu. In.
TP472	Flat Blank	50	31	-
TP474	Flat, Open with Ears 2 $\frac{3}{4}$ "	50	21	-
TP478	Flat, with $\frac{1}{2}$ " KO	50	31	-
TP487	Flat, with $\frac{3}{4}$ " KO	50	29	-
TP473	Raised $\frac{1}{4}$ ", Open with Ears 2 $\frac{3}{4}$ "	50	23	1.3
TP476	Raised $\frac{1}{2}$ ", Open with Ears 2 $\frac{3}{4}$ "	50	26	4.0
TP477	Raised $\frac{5}{8}$ ", Open with Ears 2 $\frac{3}{4}$ "	50	27	5.0
TP475	Raised $\frac{3}{4}$ ", Open with Ears 2 $\frac{3}{4}$ "	25	31	6.0
TP479	Raised 1", Open with Ears 2 $\frac{3}{4}$ "	25	34	7.0
TP483	Raised 1 $\frac{1}{4}$ ", Open with Ears 2 $\frac{3}{4}$ "	25	37	8.5

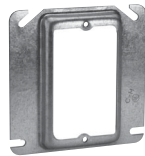
MUD RINGS FOR 4" SQUARE STEEL OUTLET BOXES

UL LISTED

CSA LISTED



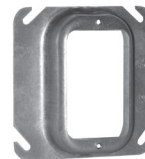
TP480



TP482, TP484,
TP486, TP489



TP494



TP488, TP490



TP496, TP499,
TP500, TP501,
TP502

Cat. #	Description	Unit Qty.	Wt. Lbs. Per 100	Capacity Cu. In.
One Device				
TP480	Flat	50	20	-
TP482	$\frac{1}{4}$ " Raised	50	21	1.8
TP484	$\frac{1}{2}$ " Raised	50	23	3.8
TP489	$\frac{5}{8}$ " Raised	50	26	4.3
TP486	$\frac{3}{4}$ " Raised	50	30	5.5
TP488	1" Raised	50	34	6.8
TP490	1 $\frac{1}{4}$ " Raised	25	39	8.5
Two Device				
TP494	Flat	50	12	-
TP496†	$\frac{1}{4}$ " Raised	50	13	3.0
TP498†	$\frac{1}{2}$ " Raised	50	18	6.0
TP499†	$\frac{3}{8}$ " Raised	50	22	8.0
TP500†	$\frac{3}{4}$ " Raised	50	24	9.0
TP501	1 $\frac{1}{4}$ " Raised	25	31	14.0
TP502	1" Raised	25	30	11.7

†Slotted design for use with 4" square box partitions.