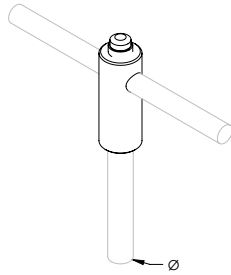


## ERICO HAMMERLOCK Ground Clamp



### Featured Highlights

- Irreversible connection with excellent mechanical strength
- Fast and simple installation requires only a hammer
- No special training required
- Low resistance connection
- Provides a visual indication of completed connection
- Allows for "T" or pass-through connections

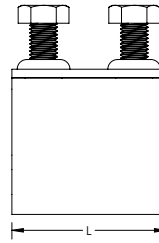
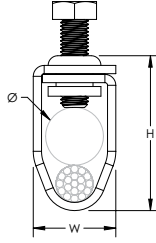
The patented ERICO HAMMERLOCK irreversible grounding connector mechanically connects the grounding conductor to the ground rod. Machined from highly conductive copper, the state-of-the-art ERICO HAMMERLOCK provides a low resistance connection designed to withstand ground fault currents and lightning transients. The connector's mechanically rugged design will help ensure that the highest level of performance is maintained for many years after the connection has been buried in the harsh underground environment.

Material: Copper



Part Number	Ground Rod Diameter, Nominal	Ground Rod Diameter, Actual	Conductor Size	Number of Conductors	Certifications
Ground Rod Type: Copper-bonded					
EHL12FC1K	1/2"	0.50"	#6 Solid - #4 Solid, 16 mm <sup>2</sup> Stranded	1	cULus
EHL12FC1K1K	1/2"	0.50"	#6 Solid - #4 Solid, 16 mm <sup>2</sup> Stranded	2	cULus
EHL12FC1V	1/2"	0.50"	#4 Stranded - #2 Stranded, 25 mm <sup>2</sup> Stranded	1	cULus
EHL12FC2G	1/2"	0.50"	1/0 Stranded - 2/0 Stranded	1	cULus
EHL34C1K	3/4"	0.68"	#6 Solid - #4 Solid, 16 mm <sup>2</sup> Stranded	1	cULus
EHL34C1V	3/4"	0.68"	#4 Stranded - #2 Stranded, 25 mm <sup>2</sup> Stranded	1	cULus
EHL34C2G	3/4"	0.68"	1/0 Stranded - 2/0 Stranded	1	cULus
EHL58C1K	5/8"	0.56"	#6 Solid - #4 Solid, 16 mm <sup>2</sup> Stranded	1	cULus
EHL58C1K1K	5/8"	0.56"	#6 Solid - #4 Solid, 16 mm <sup>2</sup> Stranded	2	cULus
EHL58C1V	5/8"	0.56"	#4 Stranded - #2 Stranded, 25 mm <sup>2</sup> Stranded	1	cULus
EHL58C2G	5/8"	0.56"	1/0 Stranded - 2/0 Stranded	1	cULus
Ground Rod Type: Galvanized					
EHL34G1K	3/4"	0.73"	#6 Solid - #4 Solid, 16 mm <sup>2</sup> Stranded	1	cULus
EHL34G1V	3/4"	0.73"	#4 Stranded - #2 Stranded, 25 mm <sup>2</sup> Stranded	1	cULus
EHL34SG1K	3/4"	0.73"	#6 Solid - #4 Solid, 16 mm <sup>2</sup> Stranded	1	cULus
EHL34SG1V	3/4"	0.73"	#4 Stranded - #2 Stranded, 25 mm <sup>2</sup> Stranded	1	cULus
EHL58G1K	5/8"	0.63"	#6 Solid - #4 Solid, 16 mm <sup>2</sup> Stranded	1	cULus
EHL58G1K1K	5/8"	0.63"	#6 Solid - #4 Solid, 16 mm <sup>2</sup> Stranded	2	cULus
EHL58G1V	5/8"	0.63"	#4 Stranded - #2 Stranded, 25 mm <sup>2</sup> Stranded	1	cULus
EHL58G2G	5/8"	0.63"	1/0 Stranded - 2/0 Stranded	1	cULus

## Ground Rod Clamp



### Featured Highlights

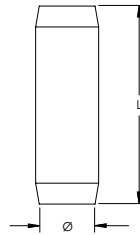
- Unique stamped body design will not crack as mechanical forces are increased
- Stainless steel threads will not strip if over-tightened
- Unique internal profile offers pull-out load in excess of four times the UL® 96 requirement
- Listed to UL® 96

Material: Copper



Part Number	Conductor Size, UL	Ground Rod Diameter, Nominal	Ground Rod Diameter, Actual	Height	Length	Width	Unit Weight
LPC790	Class 1 - Class 2 (4/0 Max)	1/2" - 3/4"	0.504" - 0.681"	1.65"	1 3/4"	0.94"	0.336 lb

## Compression Coupler for Copper-Bonded Ground Rod, Pointed



### Featured Highlights

- Threadless compression coupler for use with pointed copper-bonded ground rods
- Inside of coupler is tapered so ground rod compresses during installation to form an irreversible conductive connection

Material: Silicon Bronze



Part Number	Ground Rod Diameter, Nominal	Length	Unit Weight	Complies With
CC12F	1/2"	2 3/4"	0.29 lb	
CC34	3/4"	2 3/4"	0.44 lb	IEC® EN 62561-2
CC58	5/8"	2 3/4"	0.32 lb	IEC® EN 62561-2

IEC® EN 62561-2 supercedes EN 50164-2.