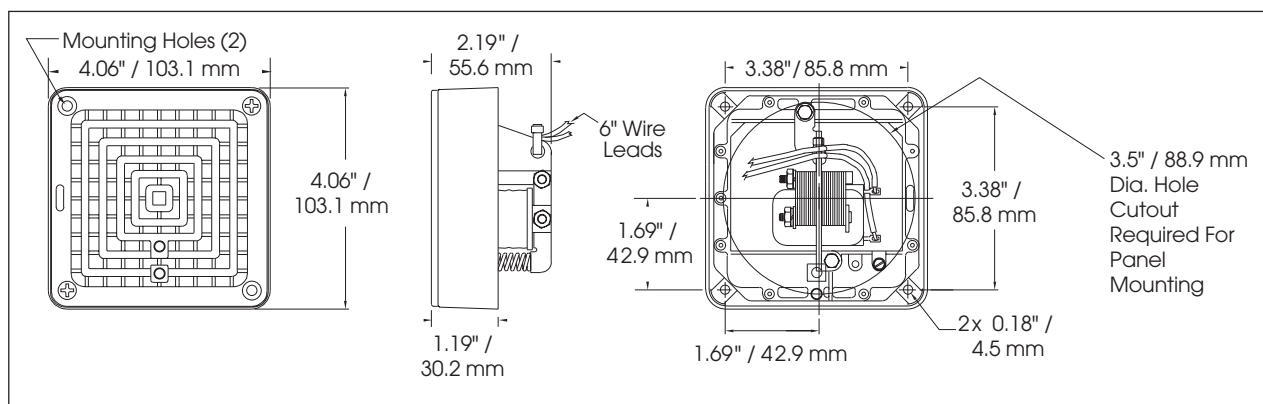


Vibratone® Horns (350)



SPECIFICATIONS

Operating Temperature:	-65°F to 150°F	-54°C to 66°C
Net Weight:	1.4 lbs	0.6 kg
Shipping Weight:	1.5 lbs	0.7 kg
Height:	4.06"	103.1 mm
Width:	4.06"	103.1 mm
Depth:	2.19"	55.6 mm

HOW TO ORDER

350	- 024 -	30
TYPE	VOLTAGE	
350	012 (12VAC)	
	024 (24VAC)	
	120 (120VAC)	
	240 (240VAC)	

REPLACEMENT PARTS

Description	Part Number
Panel Mount Gasket Kit	K8435666A
Volume Control Kit	K8435663B
Coil, 120VAC	KFC1516C
Coil, 240VAC	KFC1506C

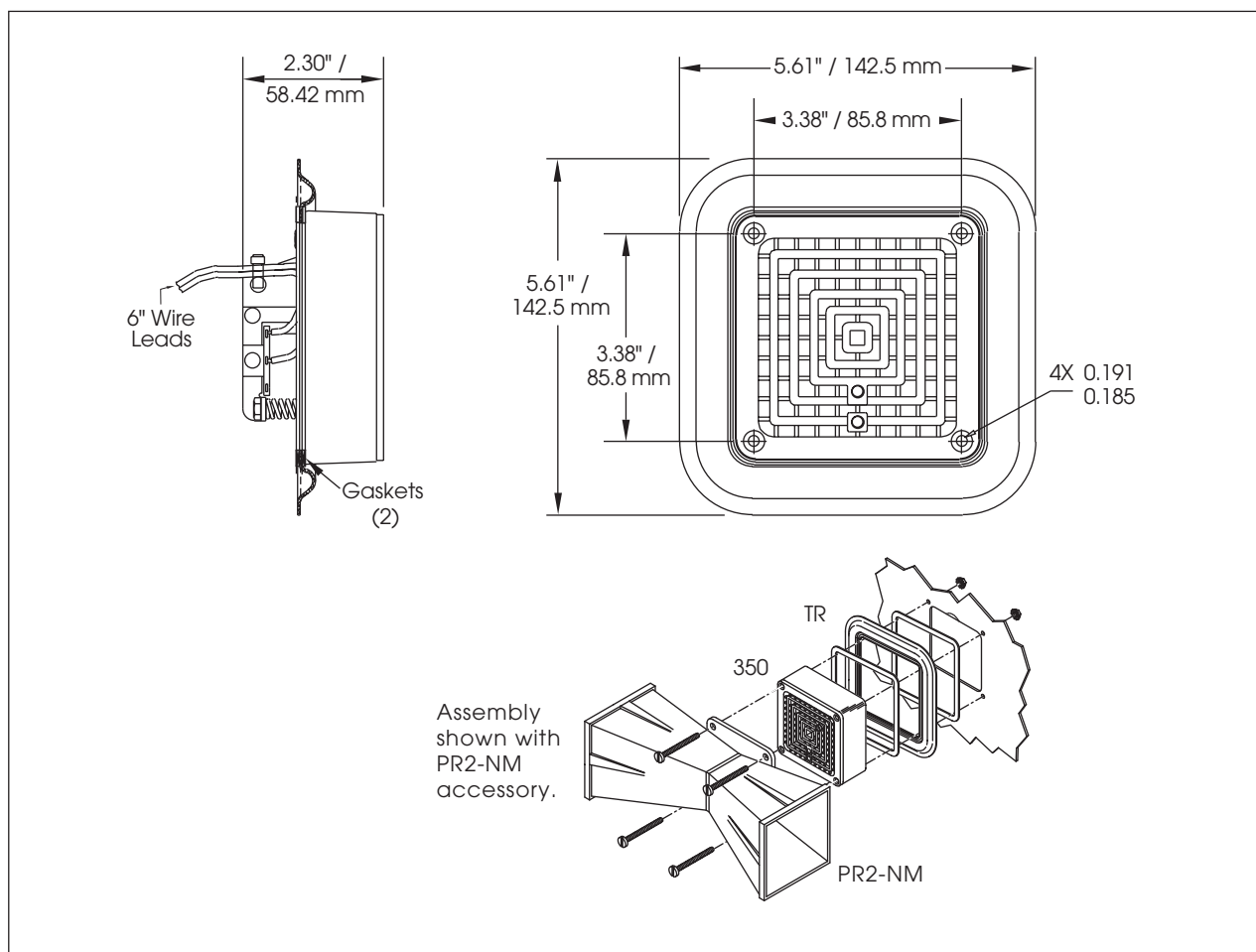
Optional Accessories below



OPTIONAL ACCESSORIES

Description	Part Number
Wall box for flush mounting the Vibratone® horn in stud, 4" block, or other shallow wall construction; 4-3/8" square box; 2-7/8" deep; shipping weight 2 lbs (0.91 kg)	FB
Same as FB, but 3-13/16" deep for 6" x 8" concrete block, cinder block or other deep wall construction; shipping wt. 3 lbs (1.36 kg)	FBL
Flush grille which attaches to the basic unit and serves as the cover of the plastered-in FB flush box; 6" H x 6"W x 1/8" D; shipping wt. 1 lb (0.45 kg)	FG
Non-metallic double projector directs sounds to both sides when attached to 350/450E models; ideal for use in hallways; 4" H x 11-1/2" W x 4" D; shipping weight 1 lb (0.45kg)	PR2-NM
Stamped surface plate used for installations on plastered-in 4" outlet switch boxes for semi-flush mountings; 6"H x 6" W x 1/2" D; shipping weight 1 lb (0.45 kg)	SF
Gasketed trim ring allowing surface mount installations of unit while maintaining Type 12 and Type 4X rating of enclosure	TR
Optional Panel Mounting Gasket Kit includes a gasket and hardware for surface or flush mounting the horn for NEMA Type 4X applications	K8435666A
Cast aluminum neoprene-gasketed weatherproof housing for outside use, complete with mounting lugs; tapped for 1/2", 3/4" conduit; 4 3/8" square box; 2" deep mounting lugs on 4 1/2" centers; shipping weight 1 lb (0.45 kg)	WB

Vibratone® Horns (350TR)



SPECIFICATIONS

Operating Temperature:	-65°F to 150°F	-54°C to 66°C
Net Weight:	1.7 lbs	0.77 kg
Shipping Weight:	1.8 lbs	0.81 kg
Height:	5.61"	142.5 mm
Width:	5.61"	142.5 mm
Depth:	2.30"	58.42 mm

HOW TO ORDER

350TR	024
TYPE	VOLTAGE
350TR	024 (24VAC)
	120 (120VAC)

REPLACEMENT PARTS

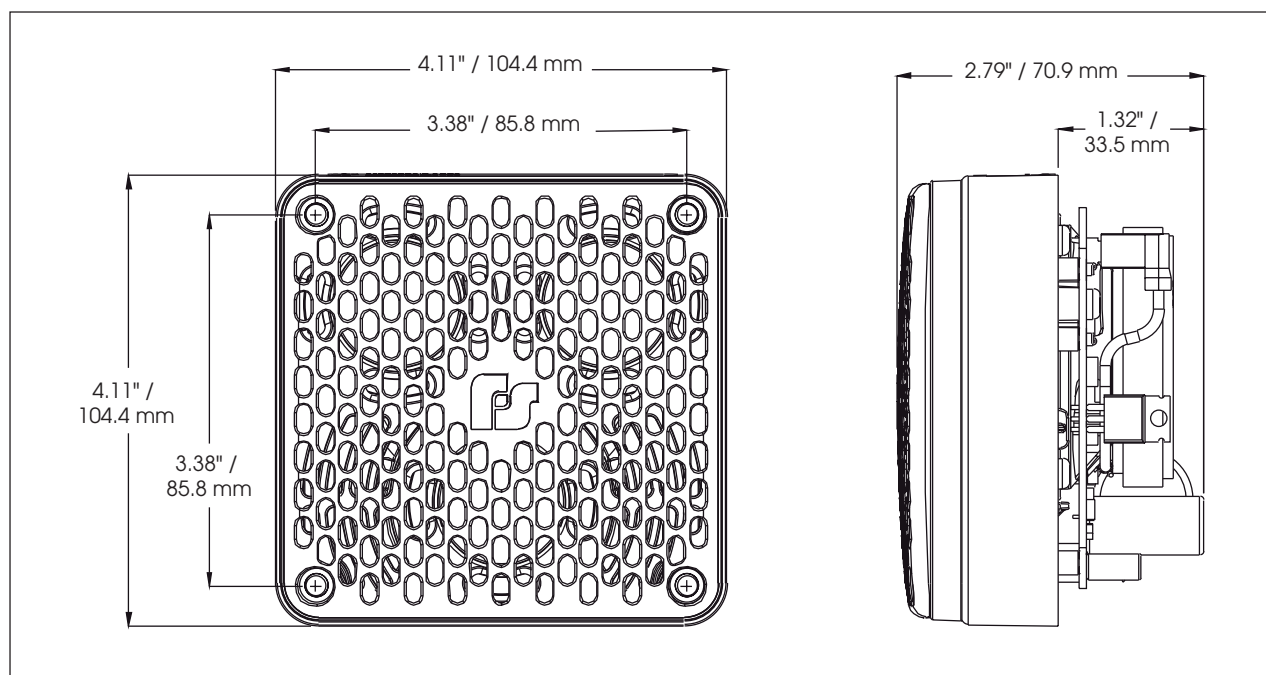
Description	Part Number
Volume Control Kit	K8435663B
Coil, 120VAC	KFC1516C
Coil, 240VAC	KFC1506C

OPTIONAL ACCESSORIES

Description	Part Number
Non-metallic double projector directs sounds to both sides when attached to 350/450E models; ideal for use in hallways; 4" H x 11-1/2" W x 4" D; shipping weight 1 lb (0.45kg)	PR2-NM



Vibratone® Electronic Horn (450E)



SPECIFICATIONS

Operating Temperature:	-65°F to 150°F	-54°C to 66°C
Housing:	Non-metallic Polycarbonate Light Gray (RAL 7035)	
Net Weight:	1.0 lbs	0.45 kg
Shipping Weight:	1.3 lbs	0.59 kg
Height:	4.11"	104.4 mm
Width:	4.11"	104.4 mm
Depth:	2.79"	70.9 mm

HOW TO ORDER

Specify Model:

450E-024 – Vibratone® Electronic Horn

OPTIONAL ACCESSORIES

Description	Part Number	Description	Part Number
Wall box for flush mounting the Vibratone® horn in stud, 4" block, or other shallow wall construction; 4-3/8" square box; 2-7/8" deep; shipping weight 2 lbs (0.91 kg)	FB	Non-metallic double projector directs sounds to both sides when attached to 350/450E models; ideal for use in hallways; 4" H x 11-1/2" W x 4" D; shipping weight 1 lb (0.45kg)	PR2-NM
Same as FB, but 3-13/16" deep for 6" x 8" concrete block, cinder block or other deep wall construction; shipping wt. 3 lbs (1.36 kg)	FBL	Molded thermoplastic neoprene-gasketed weatherproof housing for outside use, complete with mounting lugs; provided with (3) entrances for 1/2" conduit; 4-3/8" square box; 2-7/16" deep, offset mounting lugs on 5" centers; shipping weight 1 lb (0.45kg)	WB-NM
Flush grille which attaches to the basic unit and serves as the cover of the plastered-in FB flush box; 6" H x 6" W x 1/8" D; shipping wt. 1 lb (0.45 kg)	FG		

