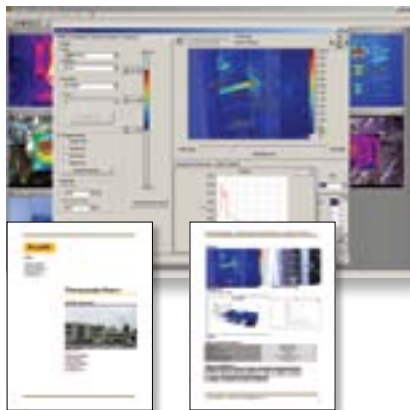


Fluke SmartView® Software

Analysis and reporting software



Powerful

Everything you need for analysis and reporting.

- Extensive annotation, editing and viewing options with full IR-Fusion® capabilities
- Multiple reporting options and templates and 3D-IR™ for unique 3D analysis

View, optimize and analyze infrared video recordings

- SmartView tools and controls allow easy access to editing functions and drag-and-drop text annotation feature
- Report Wizard guides you through automatic, professional report generation

Fluke Training Solutions

Getting started with Fluke Ti Thermal Imagers

Unsure where to begin with your new thermal imager?

Don't worry. Fluke utilizes an extensive network of industry experts to deliver a full portfolio of training solutions.

- Free online webinars
- Hands-on training seminars
- Advanced training

Visit www.fluke.com/titraining for training options and schedules.



Fluke authorized training is provided by our partner,



Fluke IR-Windows

Got switchgear



Fluke CLKT



Fluke CLV



Fluke CLKTO

Why open enclosures and expose yourself to arc flash hazards when you don't have to?

NFPA 70E compliant infrared inspections are time consuming and painful without IR Windows. So skip the headache of lock-out/tag-out, live work permits and cumbersome PPE. IR Windows provide increased safety, speed and frequency of inspection.

Fluke IR Windows offer NFPA 70E compliance without having to compromise on product performance:

- **ClirVu® optic** – Gives you a clear, unobstructed view
- **AutoGround™** – Effortless compliance with grounding requirements
- **Ease of installation** – Installs quickly and easily to the front of the panel only



Specifications

	Outdoor			Indoor
	FLK-050-CLKT	FLK-075-CLKT	FLK-100-CLKT	FLK-075-CLKTO
Crystal insert diameter	50 mm (1.97 in)	75 mm (2.96 in)	100 mm (3.94 in)	75 mm (2.96 in)
Viewing aperture diameter	43 mm (1.7 in)	68 mm (2.7 in)	89 mm (3.5 in)	68 mm (2.7 in)
Viewing aperture area	1452 mm² (2.25 in²)	3632 mm² (5.63 in²)	6322 mm² (9.79 in²)	3632 mm² (5.63 in²)
Warranty	Lifetime replacement against manufacturing defects			

For more detailed specifications download datasheets at www.fluke.com/irwindows

Ordering information

Included accessories	Models
Installation CD, self-adhesive drilling template, security access key, warranty statement.	FLK-075-CLKT 75 mm (3 in) C-Range IR Window, KwikTwist
	FLK-050-CLKT 50 mm (2 in) C-Range IR Window, KwikTwist
	FLK-100-CLKT 100 mm (4 in) C-Range IR Window, KwikTwist
	FLK-075-CLKTO 75 mm (3 in) Kwik-twist aluminium cover KT

Recommended accessories



BOOK-ITP
Introduction to Thermography Principles Book



FLK-LENS/TELE1
Telephoto Infrared Lens (Ti32, TiR32, Ti29, TiR29, Ti27 and TiR27 only)



FLK-LENS/WIDE1
Wide-Angle Infrared Lens (Ti32, TiR32, Ti29, TiR29, Ti27 and TiR27 only)



TI-CAR-CHARGER
Thermal Imager Car Charger (all models except FlexCam)



TI-VISOR
Thermal Imager Sun Visor (all models except FlexCam)



TI-SBP3
Smart Battery Pack (Ti32, TiR32, Ti29, TiR29, Ti27 and TiR27 only)



TI-SBC2
Charging Base (Ti32, TiR32, Ti29, TiR29, Ti27 and TiR27 only)



103232
Anti-Glare Hood (FlexCam models only)



104543
Car Charger (FlexCam models only)



TI-SBC
Battery Charger (FlexCam models only)



TI-SBP
Rechargeable Battery Pack (FlexCam models only)



TI-TRIPOD
Ti Tripod Mounting Base (all models except FlexCam)

For models Ti125, TiR125, Ti110, TiR110, Ti100 only



TI-VISOR2
Sun Visor



TI-SBC3
External Charging Base and Power Supply



TI-TRIPOD2
Tripod Mounting Accessory

Check price and availability at www.fluke.com/wtb