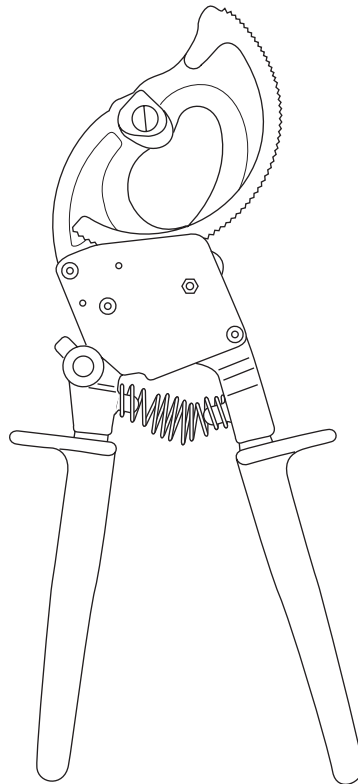


SERVICE BULLETIN



759 Ratchet Cable Cutter



Read and **understand** all of the instructions and safety information in this manual before operating or servicing this tool.

IMPORTANT SAFETY INFORMATION



SAFETY ALERT SYMBOL

This symbol is used to call your attention to hazards or unsafe practices which could result in an injury or property damage. The signal word, defined below, indicates the severity of the hazard. The message after the signal word provides information for preventing or avoiding the hazard.

⚠ **DANGER**

Immediate hazards which, if not avoided, **WILL** result in severe injury or death.

⚠ **WARNING**

Hazards which, if not avoided, **COULD** result in severe injury or death.

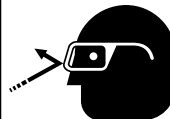
⚠ **CAUTION**

Hazards or unsafe practices which, if not avoided, **MAY** result in injury or property damage.



⚠ **WARNING**

Electric shock hazard:
This tool is not insulated. Contact with live circuits could result in severe injury or death.



⚠ **WARNING**

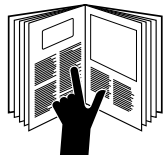
Wear eye protection when operating or servicing this tool.
Failure to wear eye protection could result in serious eye injury from flying debris.



⚠ **WARNING**

Keep hands and fingers clear of blades.
Failure to observe this warning could result in severe injury or death.

Note: Keep all decals clean and legible, and replace when necessary.



⚠ **WARNING**

Read and understand all of the instructions and safety information in this manual before operating or servicing this tool.

Failure to observe this warning could result in severe injury or death.

All specifications are nominal and may change as design improvements occur. Greenlee Textron Inc. shall not be liable for damages resulting from misapplication or misuse of its products.

KEEP THIS MANUAL

Specifications

Length: 10-1/2" (266 mm)

Weight: 1.4 lb (0.6 kg)

IMPORTANT

Do not cut ACSR or steel.

Capacity

	Maximum	Frequent Use
Copper	500 kcmil (MCM) (240 mm ²)	400 kcmil (MCM) (185 mm ²)
Aluminum	750 kcmil (MCM) (400 mm ²)	600 kcmil (MCM) (300 mm ²)
Communications Cable	1-1/8" diameter (28 mm ²)	—

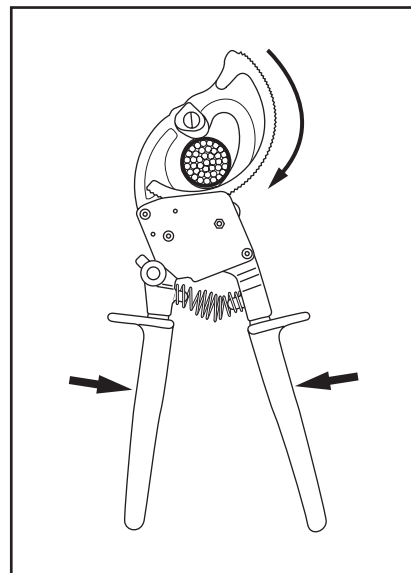
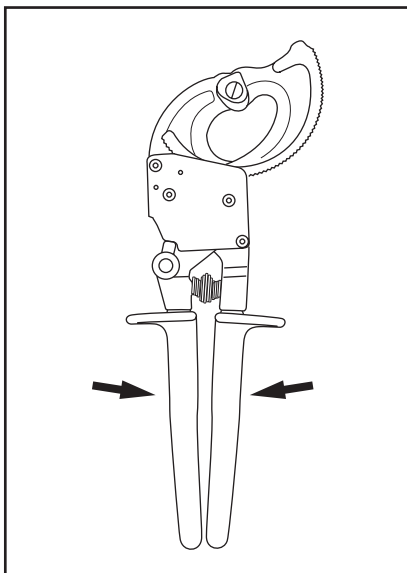
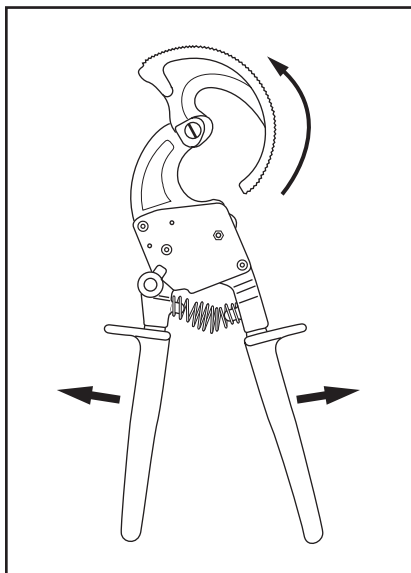
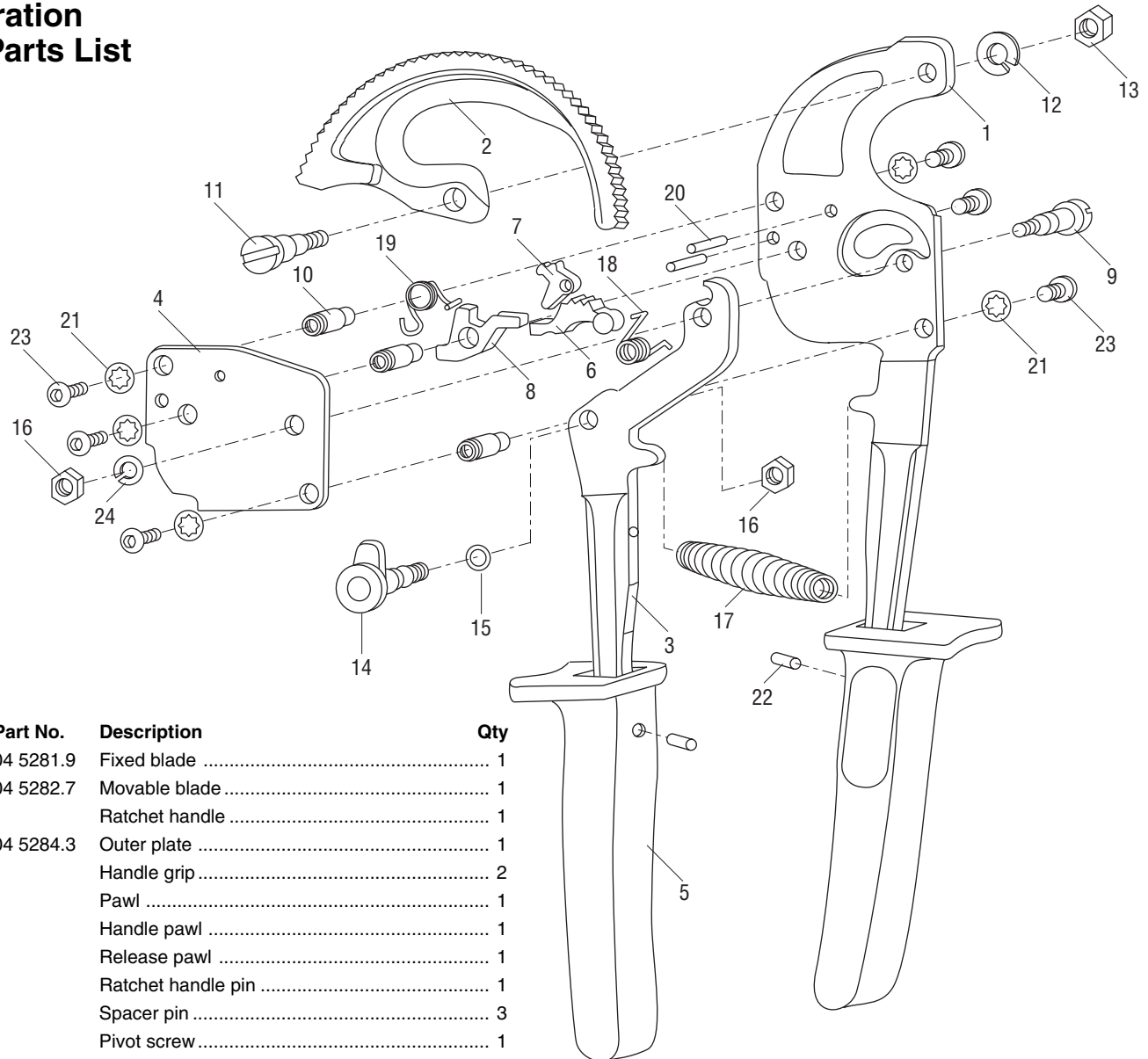


Illustration and Parts List



Key	Part No.	Description	Qty
1	504 5281.9	Fixed blade	1
2	504 5282.7	Movable blade	1
3		Ratchet handle	1
4	504 5284.3	Outer plate	1
5		Handle grip	2
6		Pawl	1
7		Handle pawl	1
8		Release pawl	1
9		Ratchet handle pin	1
10		Spacer pin	3
11		Pivot screw	1
12		M6 washer	1
13		M6 lock nut	1
14		Ratchet lever knob	1
15		O-ring	1
16		M4 lock nut	2
17	504 5297.5	Coil spring	1
18		Pawl spring	1
19		Ratchet pawl spring	1
20		Ratchet pawl set pin	2
21		M4 lock tooth washer	6
22		Handle grip set plug	2
23		Socket head set screw	6
24		M4 spring washer	1

Repair Kits (quantities as listed above)

504 5310.6	Pawl kit (includes items 6–8, 18–20)
504 5311.4	Pivot screw kit (includes items 9, 11–13, 16, 24)
504 5312.2	Set screw kit (includes items 10, 21, 23)
504 5313.0	Ratchet lever knob kit (includes items 14–16)
504 5314.9	Handle with grip and plug kit (includes items 3, 5, 17, 22)



GREENLEE®
A Textron Company

USA	800-435-0786	Fax: 800-451-2632
	815-397-7070	Fax: 815-397-1865
Canada	800-435-0786	Fax: 800-524-2853
International	+1-815-397-7070	Fax: +1-815-397-9247

4455 Boeing Drive • Rockford, IL 61109-2988 • USA • 815-397-7070
An ISO 9001 Company • Greenlee Textron Inc. is a subsidiary of Textron Inc.

www.greenlee.com

Printed in USA