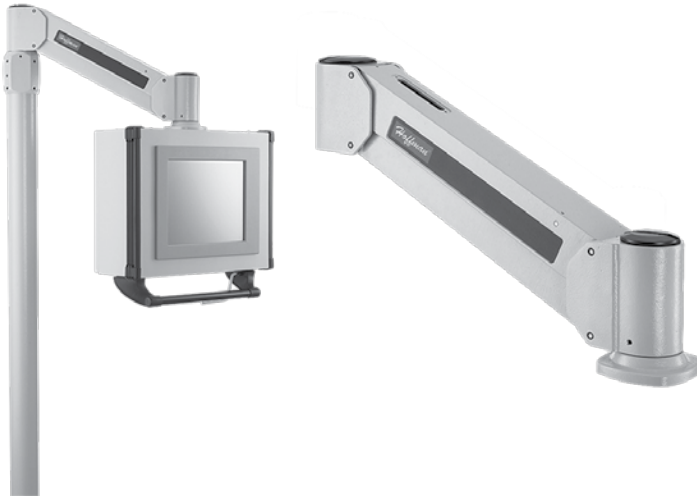


## SYSPEND™ VL-MOTION ARM, TYPE 4



### INDUSTRY STANDARDS

Maintains NEMA Type 4 and 12 and IEC IP66 enclosure rating when properly installed per Hoffman instructions.

### APPLICATION

Vertical motion pendant arm effortlessly lifts, lowers and repositions HMI enclosures in NEMA Type 4 and 12 environments. Gas spring counterbalance can be adjusted for loads of 30-100 lb. Release handle and locking mechanism are ideal for applications where machine vibration is a concern.

### FEATURES

- Field-adjustable gas-spring counterbalance supports loads of 30-100 lbs.
- Gas springs are set to maximum pressure (100 lb. load) and lifting force can be reduced through a sealed access cap in the top of the arm (*Lifting force cannot be increased once spring pressure is reduced.*)
- Provides 13 in. of vertical height adjustment

- Release handle (included with arm) automatically locks arm in place when repositioned vertically (release handle is required to operate the arm)
- Easily interfaces with Hoffman HMI enclosures using a 60-x-60-mm enclosure mounting pattern (enclosure must be ordered separately)
- 1.4-in. internal cable pathway maintains NEMA Type 4 and 12 enclosure rating and protects wires and cables
- Gasketed mounting surfaces at both ends of arm maintain seal integrity
- Enclosure and arm can be swiveled 320 degrees
- Wall-mount, machine-top-mount and post-top-mount options available
- Optional floorpost available

### SPECIFICATIONS

- Aluminum construction
- RAL 7035 light-gray finish
- Gas spring counterbalance

### BULLETIN: VM4

#### Standard Product

Catalog Number	AxBxC in./mm	Description <sup>a</sup>	Wall-Mount Adapter	Post-Top-Mount Adapter	Machine-Top-Mount Adapter	Load Capacity (lbs.)	Load Capacity (kg)	Arm Weight (lb.)	Arm Weight (kg)
VL22	6.72 x 25.50 x 3.50 171 x 648 x 89	VL-Motion Arm, 22-in.	VLWALL	VLPOST	VLMACHINE	30-100	14-45	20.0	9.07

<sup>a</sup>Mounting adapter required. Order separately.  
Release handle included with arm.

