

TEMPERATURE CONTROL SWITCH



INDUSTRY STANDARDS

cURus; File No. E164102
UL94-V0

Protection rating IEC IP30
CSA Certified, File Number 215952
CE

APPLICATION

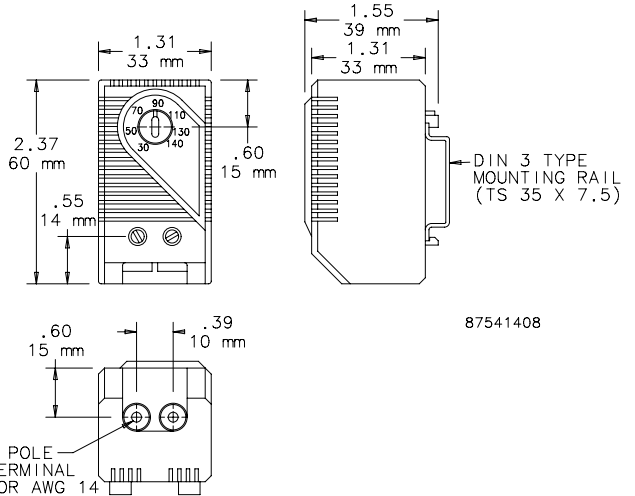
These easy-to-install thermostats regulate and monitor air temperature in enclosures that contain heat-emitting equipment. Thermostats prolong heater and fan life expectancy by controlling operation time and increase electrical component working efficiency by exposing them to fewer environmental contaminants.

FEATURES

- Additional label for conversion to Celsius scale and blank label to cover set point range label when adjustment after initial setting is not desired are included
- Bimetal temperature sensor
- Plastic housing
- Connections consist of tubular screw terminals for AWG 14 (.04 sq. in.)
- Provision for both panel mounting and DIN rail mounting

FINISH

- Molded plastic housing is black



Performance Data Temperature Control Switch

| CATALOG NUMBERS | | |
|--------------------------------------|--|----------------------------------|
| | ATEMNC | ATEMNO |
| ELECTRICAL DATA | | |
| Maximum Load (Switching Capacity) | | |
| 120 VAC | 15 A resistive / 2 A inductive @ 120 VAC | |
| 250 VAC | 10 A resistive / 2 A inductive @ 250 VAC | |
| DC | DC 30 W | |
| Minimum load | 20 mA (all voltages) | |
| Contact Type | NC (normally closed), quick acting | NO (normally open), quick acting |
| Control Application | Heater | Fan |
| UNIT CONSTRUCTION | | |
| Unit Dimensions - H x W x D (in./mm) | 2.37/60 x 1.31/33 x 1.55/39 | |