

## SCREW COVER WIRING TROUGH, NEMA TYPE 12



9

### INDUSTRY STANDARDS

UL 870 Listed; File No. E27524

NEMA/EEMAC Type 12  
 JIC standards EGP-1-1967 and EMP-1-1967  
 CSA, File No. 42184: Type 12  
 IEC 60529, IP55

### APPLICATION

This wiring trough meets basic functionality requirements for applications in which frequent access is not needed. Providing protection in moist or dirty environments, the trough can be customized with different finish colors and textures.

### FEATURES

- Ends and seams continuously welded and ground smooth; no holes or knockouts
- Captivated cover screws thread into sealed wells
- Oil-resistant gasket and adhesive

### SPECIFICATIONS

- 14 gauge steel covers and bodies
- F2212SC is 16 gauge steel

### FINISH

ANSI 61 gray polyester powder finish inside and out over pretreated surfaces.

### ACCESSORIES

*See also Accessories chapter.*  
 Touch-Up Paint (ATPPY61)

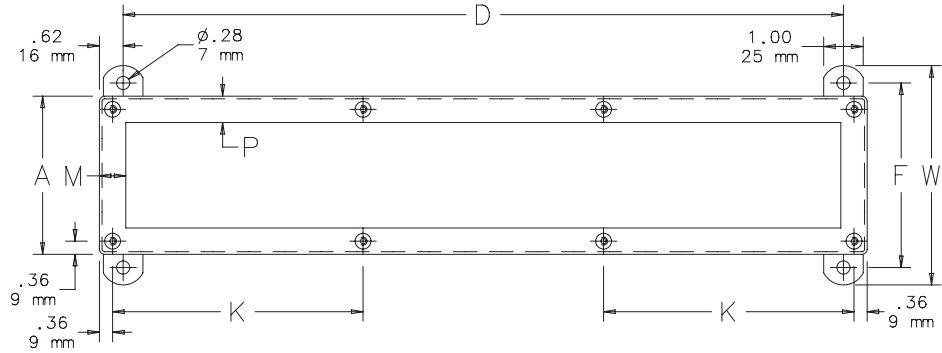
### MODIFICATION AND CUSTOMIZATION

Hoffman excels at modifying and customizing products to your specifications. Contact your local Hoffman sales office or distributor for complete information.

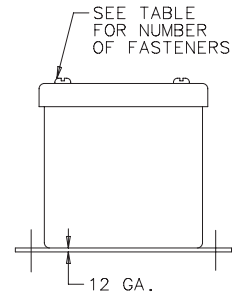
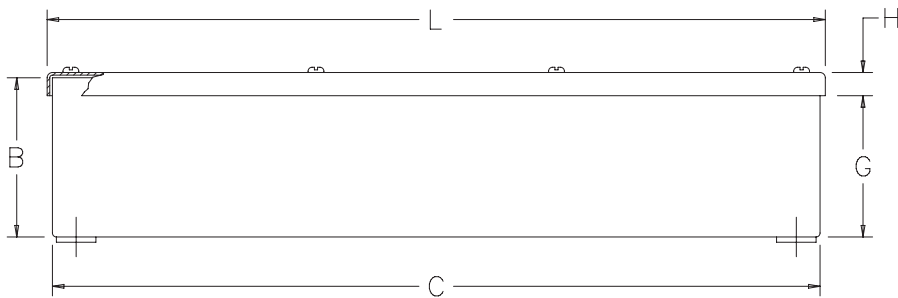
**BULLETIN: F20SC**

Standard Product

Catalog Number	AxBxC in./mm	Number of Fasteners	D in./mm	F in./mm	G in./mm	H in./mm	K in./mm	L in./mm	M in./mm	P in./mm	W in./mm
F2212SC	2.50 x 2.50 x 12.00 64 x 64 x 305	4	10.75 273	3.19 81	2.09 53	0.56 14	—	12.22 310	0.69 18	0.41 10	4.00 102
F4412SC	4.00 x 4.00 x 12.00 102 x 102 x 305	4	10.75 273	4.69 119	3.59 91	0.58 15	—	12.25 311	0.69 18	0.69 18	5.50 140
F4418SC	4.00 x 4.00 x 18.00 102 x 102 x 457	6	16.75 425	4.69 119	3.59 91	0.58 15	8.64 219	18.25 464	0.69 18	0.69 18	5.50 140
F4424SC	4.00 x 4.00 x 24.00 102 x 102 x 610	6	22.75 578	4.69 119	3.59 91	0.58 15	11.64 296	24.25 616	0.69 18	0.69 18	5.50 140
F4430SC	4.00 x 4.00 x 30.00 102 x 102 x 762	8	28.75 730	4.69 119	3.59 91	0.58 15	9.77 248	30.25 768	0.69 18	0.69 18	5.50 140



TOP VIEW WITH COVER REMOVED



C2538-C