

For Allen-Bradley Bulletin 1494F (Series B) and 1494D Fixed Depth Disconnect Devices

In Hoffman Bulletin A22  
Wall-Mounted Disconnect Enclosures



## **WARNING**

The functions, fits, and clearances of the installation described hereon are calculated from information supplied by the manufacturers of the equipment to be installed. Be certain to check the function, fits, and clearances of all equipment both before and after installation to assure that it operates properly and safely and meets all applicable codes, standards, and regulations.

In the event the completed installation does not function properly or fails to meet any such codes, standards, or regulations, do not attempt to make alterations or operate the equipment. Report such facts immediately to:

Customer Service Dept.  
Pentair Technical Products  
2100 Hoffman Way  
Anoka, MN 55303  
PH 763 422 2211  
hoffmanonline.com

## **NOTICE**

To maintain the environmental rating of this enclosure, install in any opening only listed or recognized disconnect devices, external mounting feet, or conduit hubs that have the same environmental rating as the enclosure. Install in compliance with the installation instructions of the device.

**Wall-Mounted Disconnect Enclosures  
Installation Instructions For Allen-Bradley  
Bulletin 1494F (Series B) and 1494D Fixed Depth Disconnect Devices**

**INSTALLATION STEPS:**

1. Drill and tap holes in panel as shown in Figures 1 and 2. Two (2) holes are required for unfused switches and operators for circuit breakers (dimensions D, E and F). Three (3) holes are required for fused switches (dimensions D, E, F and G).
2. Install the Allen-Bradley disconnect switch or operator in the enclosure. Follow instructions furnished with Allen-Bradley switch or operator.
3. Support disconnect platform using spacers (cut to length), screws, threaded rod (cut to length), nuts and lockwashers supplied with the enclosure (see Figure 3).
4. Install Allen-Bradley type L1 (for 2-point latching) or type L2 and L3 (for 3-point latching) door hardware on the enclosure door. Enclosures 40 inches high or more require 3-point latching. Use latch rods furnished with the enclosure and follow instructions furnished with Allen-Bradley door hardware.
5. Adjust the door hardware roller assemblies to give proper gasket compression. Use one of the medium thickness shims furnished by Allen-Bradley on roller assembly nearest the door handle. Adjust the roller at the end of the latch rods so the edge of the roller is approximately 13/16 inch from the top surface of the gasket. When the door is closed and latched the gap between the door edge and the body should be approximately 1/8 inch (see Figure 3). See Allen-Bradley instructions for other door hardware adjustments.

Wall-Mounted Disconnect Enclosures  
Installation Instructions For Allen-Bradley  
Bulletin 1494F (Series B) Fixed Depth Disconnect Devices

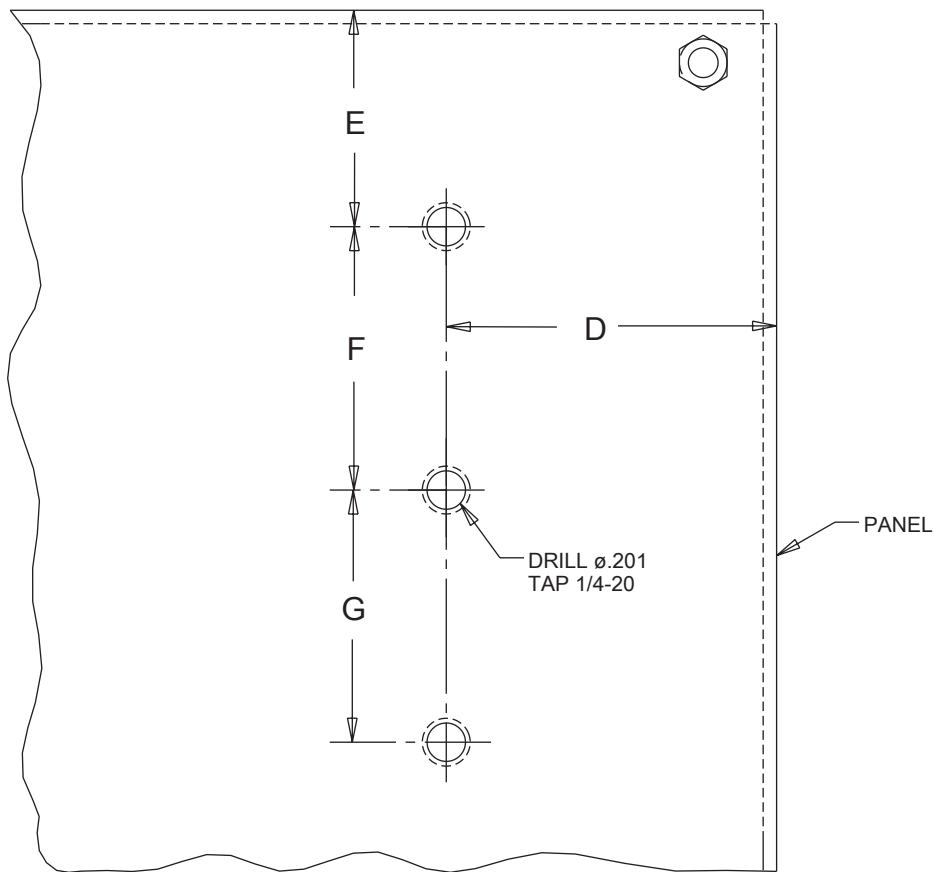


FIG 1.

Wall-Mounted Disconnect Enclosures  
 Installation Instructions For Allen-Bradley  
 Bulletin 1494F (Series B) Fixed Depth Disconnect Devices

Allen-Bradley Switch		D	F	"C" = 10" Deep		"C" = 12" Deep		"C" = 16" Deep	
				E	P	E	P	E	P
30 Amp.	1494F-N30 / 1494F-F30	3.00	6.00	4.25	1.94	7.00	3.94	7.00	7.94
60 Amp.	1494F-N60 / 1494F-F60	3.00	6.00	4.25	1.94	7.00	3.94	7.00	7.94
100 Amp.	1494F-N100 / 1494F-F100	3.00	6.00	n/a	n/a	7.00	2.71	7.00	6.71
200 Amp.	1494F-N200 / 1494F-F200	3.38	8.19	n/a	n/a	6.62	2.66	6.62	6.66

For Fusible Switch			
Switch Size	Fuse Clip Rating	Fuse Class H & R	Fuse Class J
		Dim. G	Dim. G
30 Amp.	30A / 250V	2.81	2.81
	30A / 600V	5.63	2.81
	60A / 250V	3.63	3.00
	60A / 600V	6.13	3.00
60 Amp.	30A / 250V	2.81	2.81
	30A / 600V	5.63	2.81
	60A / 250V	3.63	3.00
	60A / 600V	6.13	3.00
	100A / 250V	6.13	4.94
	100A / 600V	8.13	4.94
100 Amp.	60A / 250V	4.19	3.56
	60A / 600V	6.69	3.56
	100A / 250V	6.69	5.50
	100A / 600V	8.69	5.50
	200A / 250V	n/a	6.25
	200A / 600V	n/a	6.25
200 Amp.	100A / 250V	5.88	4.63
	100A / 600V	7.88	4.63
	200A / 250V	6.75	5.38
	200A / 600V	9.25	5.38
	400A / 250V	n/a	6.25
	400A / 600V	n/a	6.25

# Wall-Mounted Disconnect Enclosures Installation Instructions For Allen-Bradley Bulletin 1494D Fixed Depth Disconnect Devices

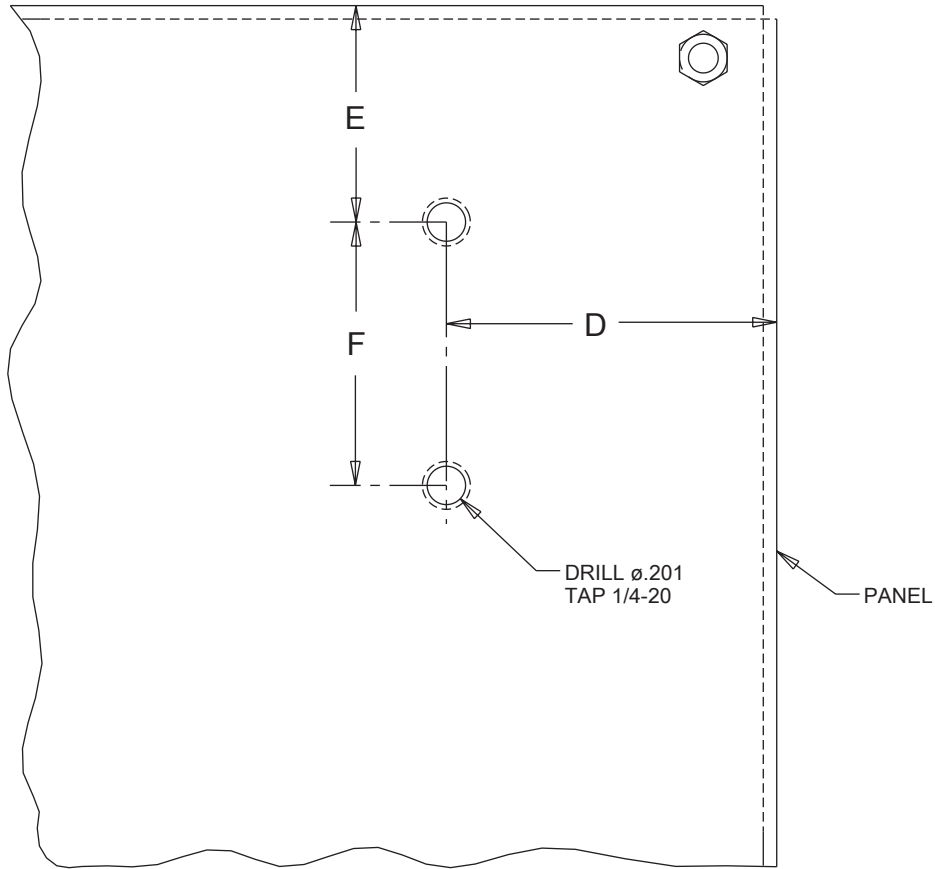


FIG 2.

Allen-Bradley Operator for Circuit Breaker		D	F	"C" = 10" Deep		"C" = 12" Deep		"C" = 16" Deep	
				E	P	E	P	E	P
150 Amp.	1494D-N4 / 1494D-N40	3.00	7.18	4.19	3.84	6.94	5.88	6.94	9.88
250 Amp.	1494D-N5 / 1494D-N50	2.56	10.88	3.50	1.84	6.25	3.84	6.25	7.84
400 Amp.	1494D-N5 / 1494D-N60	2.56	10.88	3.50	1.84	6.25	3.84	6.25	7.84

# Wall-Mounted Disconnect Enclosures Installation Instructions For Allen-Bradley Bulletin 1494F (Series B) and 1494D Fixed Depth Disconnect Devices

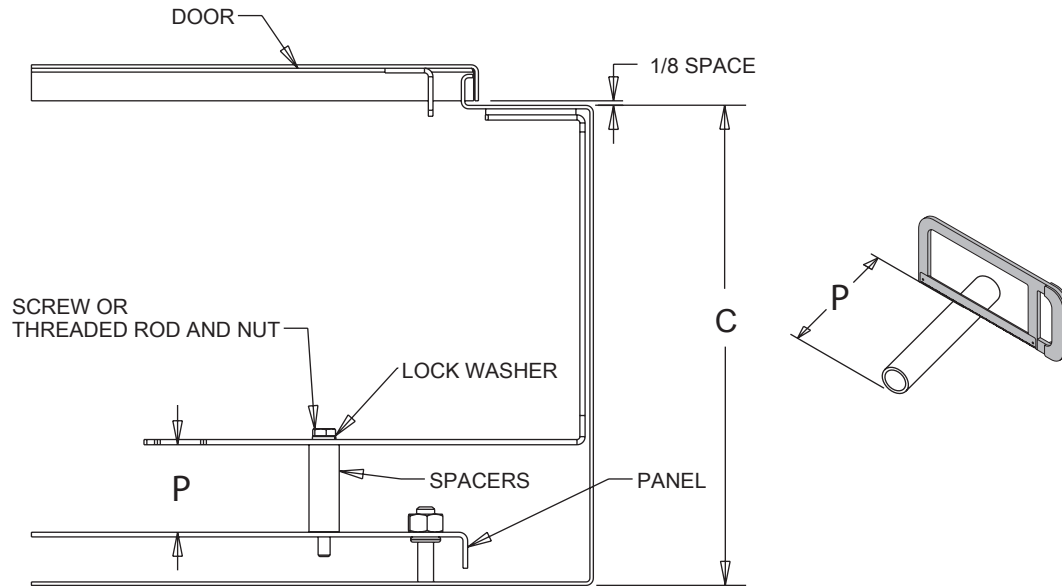


FIG. 3.

<b>A22 SPACER KITS</b>		
<b>“C” 10 and 12 Inch Deep Enclosures</b>		
<b>89001960 KIT, SPACER; AB DISCONNECT</b>		
Qty	Part Number	Description
3	89001959	Spacer 5.88"
3	99401318	Lockwasher 1/4"
3	99401177	Screw, 1/4-20 x 2-3/4
3	87955321	Screw, 1/4-20 x 3-1/2
3	99401203	Screw, 1/4-20 x 4-1/2
3	99401200	Screw, 1/4-20 x 6-1/2
<b>“C” 16 Inch Deep Enclosure</b>		
<b>89043770 KIT, SPACER; AB DISCONNECT</b>		
Qty	Part Number	Description
3	99401406	Hex Nut 1/4-20
3	99401318	Lockwasher 1/4"
3	89043429	Spacer 9.88"
3	22155004	Threaded Rod 1/4-20x11- 7/8

