

Hubbell's Circuit-Lock® Manual Motor Controllers

"Suitable as Motor Disconnects"

Hubbell manufactures one of the most complete lines of motor disconnects on the market. Designed to ensure maximum reliability and performance, Hubbell Circuit-Lock® motor controllers meet or exceed all industry requirements. Because our Circuit-Lock® motor controllers are also disconnects, they ensure safety, compliance, flexibility and productivity for today's industrial and commercial environments. Whether controlling motor loads, safely terminating power or isolating equipment, Hubbell has the solution for you—no matter what the environment or application.



Hubbell Flexibility

With Hubbell's wide range of Circuit-Lock® motor controllers and disconnects that offer several mounting options, NEC® line of sight requirements are easily achieved at the equipment or on the wall in virtually any industrial environment. Switches with a compact footprint, a variety of NEMA® type enclosures and plug-and-play LINKOSITY® make switch placement easier and more flexible than ever.



Hubbell Productivity

Circuit-Lock® keeps assembly lines, goods and services moving. By offering a dual motor controller-disconnect rating, power can be safely terminated at any point in the circuit to perform maintenance on a single motor without shutting down the entire line. With the plug-and-play LINKOSITY® power system, MotorQuick® reduces motor change-out time by more than 65% to get equipment up and running faster.

Hubbell Safety

Safety of personnel and equipment is paramount in any manufacturing environment. Hubbell Circuit-Lock® motor controllers withstand short circuits and provide a high degree of safety across the factory floor. Disconnect Switches for Variable Frequency Drives (VFDs) safely terminate power to prevent risk of injury and damage to high-performance output devices used for controlling today's conveyor systems.



Hubbell Compliance

Compliance with codes and regulations is a must in any industrial environment. Hubbell motor controllers meet a variety of requirements, including OSHA lockout/tagout, NSF certification for hygiene and hazardous location ratings. Each Circuit-Lock® motor controller is UL listed as "Suitable as Motor Disconnect". The NEC® allows for the disconnect and controller to be in one unit.



Variable Frequency Disconnects



Each Controller is Also a Disconnect



NEC® is a registered trademark of the National Fire Protection Association (NFPA).
NEMA® is a registered trademark of the National Electrical Manufacturers Association.

Ratings Quick Reference Guide

Circuit-Lock® Switched Enclosures

Amp	Description	Phase	Poles	HP				Catalog Number
				120	240	480	600	
30	TYPE 1 Non-Metallic	3	3	3	7.5	15	20	HBL1389MQR
	TYPE 1 Non-Metallic	3	3	3	7.5	15	20	HBL1389MQ5
	TYPE 1 Non-Metallic	3	3	3	7.5	15	20	HBL1389MQR2
	NEMA 1 Aluminum	1	2	2	5	10	15	HBL1372D
	NEMA 1 Aluminum	3	3	3	7.5	15	20	HBL1379D
	NEMA 1 Non-Metallic	1	2	2	5	10	15	HBL1392D
	NEMA 1 Non-Metallic	3	3	3	7.5	15	20	HBL1389D
	NEMA 3/3R Non-Metallic	1	2	2	5	10	15	HBL13R22D
	NEMA 3/3R Non-Metallic	3	3	3	7.5	15	20	HBL13R23D
	NEMA 3R Die Cast Aluminum	1	2	2	5	10	15	HBL13R12D
	NEMA 3R Die Cast Aluminum	3	3	3	7.5	15	20	HBL13R13D
	NEMA 3R Aluminum	1	2	2	5	10	15	HBL13R92D
	NEMA 3R Aluminum	3	3	3	7.5	15	20	HBL13R89D
	TYPE 4X Non-Metallic	3	3	1	7.5	15	15	HBLDS3
	TYPE 4X Non-Metallic	3	3	1	7.5	15	15	HBLDS3AC
	TYPE 4X Non-Metallic	3	3	1	7.5	15	15	HBLDS3NK
	TYPE 4X Non-Metallic	3	3	1	7.5	15	15	HBLDS3ACNK
	TYPE 4X Non-Metallic	3	3	1	5	10	10	HBLDS33ACNK
	TYPE 4X Non-Metallic	3	3	1	7.5	15	15	HBLDS3MQR
	TYPE 4X Non-Metallic	3	3	1	7.5	15	15	HBLDS3MQ5
TYPE 4X Non-Metallic	3	3	1	7.5	15	15	HBLDS3MQR2	
TYPE 4X Stainless Steel	3	3	1	7.5	15	15	HBLDS3SS	
TYPE 4X Stainless Steel	3	3	1	7.5	15	15	HBLDS3SSAC	
TYPE 4X Stainless Steel	3	3	1	7.5	15	15	HBLDS3SSVFD	
TYPE 4X Stainless Steel	3	3	2	7.5	15	15	HBLDS3SSMQR	
TYPE 4X Stainless Steel	3	3	1	7.5	15	15	HBLDS3SSMQ5	
TYPE 4X Non-Metallic Fused Disconnect	3	3	1	7.5	15	20	FDS30	
NEMA 4X Stainless Steel	3	3	3	7.5	15	20	HBL13S33D	
NEMA 4X Non-Metallic	3	3	3	7.5	15	20	HBL13X33D	
60	NEMA 3R Aluminum	1	2	—	10	15	20	HBL16R92D
	NEMA 3R Aluminum	3	3	—	10	25	30	HBL16R93D
	TYPE 4X Non-Metallic	3	3	7.5	30	50	50	HBLDS6
	TYPE 4X Non-Metallic	3	3	7.5	30	50	50	HBLDS6AC
	TYPE 4X Stainless Steel	3	3	7.5	30	50	50	HBLDS6SS
	TYPE 4X Stainless Steel	3	3	7.5	30	50	50	HBLDS6SSAC
	TYPE 4X Non-Metallic Fused Disconnect	3	3	3	15	30	40	FDS60
	NEMA 4X Stainless Steel	3	3	—	10	25	30	HBL16S63D
NEMA 4X Non-Metallic	3	3	—	10	25	30	HBL16X63D	
100	TYPE 4X Non-Metallic	3	3	7.5	30	50	50	HBLDS10
	TYPE 4X Non-Metallic	3	3	7.5	30	50	50	HBLDS10AC
	TYPE 4X Stainless Steel	3	3	7.5	30	50	50	HBLDS10SS
	TYPE 4X Stainless Steel	3	3	7.5	30	50	50	HBLDS10SSAC



HBL1379D



HBL1389D



HBLDS3



HBL16R93D



HBL13S33D



FDS30



HBLDS3SS



HBL16S63D



HBLDS3MQR



HBLDS3MQ5

Circuit-Lock® Switches

Amp	Description	Phase	Poles	HP				Catalog Number
				120	240	480	600	
30	Toggle Switch	1	2	2	5	10	15	HBL7832D
	Short Toggle Switch	1	2	2	5	10	15	HBL7832DS
	Toggle Switch, Bulk Pack	1	2	2	5	10	15	HBL7832DX
	Toggle Switch	3	3	3	7.5	15	20	HBL7810D
	Short Toggle Switch	3	3	3	7.5	15	20	HBL7810DS
40	Toggle Switch	1	2	2	5	10	15	HBL7842D
	Toggle Switch	3	3	3	7.5	15	20	HBL7843D
50	Toggle Switch	1	2	2	5	10	15	HBL7852D
	Toggle Switch	3	3	3	7.5	15	25	HBL7853D
—	Finger guard (30–50A Switches)	—	—	—	—	—	—	HBLFG30
60	Toggle Switch	1	2	—	10	15	20	HBL7862D
	Toggle Switch	3	3	—	10	25	30	HBL7863D
	Toggle Switch – Front Wire	1	2	—	10	15	20	HBL7862FWD
	Toggle Switch – Front Wire	3	3	—	10	25	30	HBL7863FWD
85	Toggle Switch	1	2	—	10	15	20	HBL7882D
	Toggle Switch	3	3	—	10	25	40	HBL7883D



HBL7810D



HBL7853D



HBL7862D



HBL7863D

MotorQuick® significantly reduces the time it takes to replace motors by combining the plug-and-play technology of the LINKOSITY® power system with the versatility of Circuit-Lock® motor disconnect switches. Quick disconnect terminations will reduce motor change-out time by approximately 65%. Keeping spare motors already pre-

wired with a LINKOSITY® inlet enables wiring to be done off-line when it is convenient, not critical. Motor rotation can be pre-checked in a maintenance shop to further speed the installation.

The net result is that equipment is up and running in a fraction of the time, helping improve the bottom line.



MotorQuick® Cost of Ownership Analysis

Traditional Motor Changeout

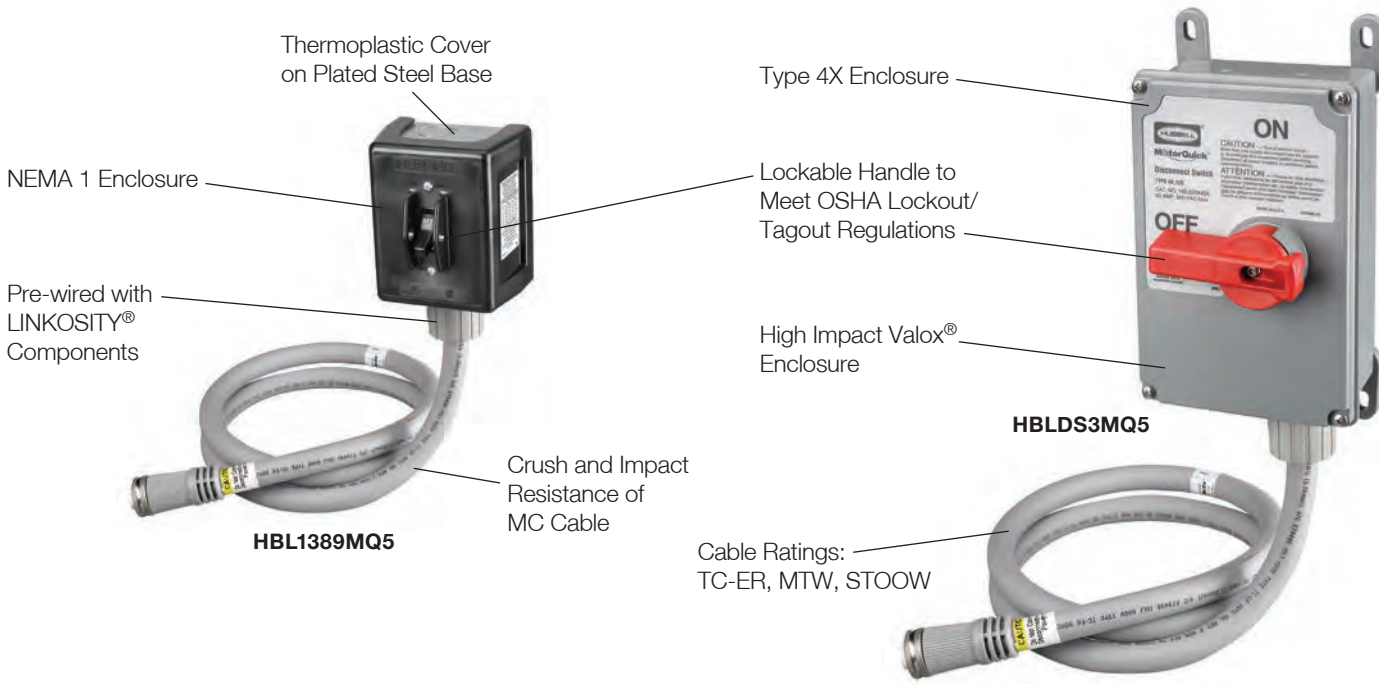
Catalog Number	Total Material Cost	Labor Cost/ Hr	Downtime	Total Labor Cost	Downtime Cost/hr	Total Downtime Cost	Total Cost
HBL1389D	\$106.00	\$53.00	1 hour	\$53.00	\$750.00	\$750.00	\$909.00
HBLDS3	\$185.00	\$53.00	1 hour	\$53.00	\$750.00	\$750.00	\$988.00

MotorQuick® Motor Changeout

Catalog Number	Total Material Cost	Labor Cost/ Hr	Downtime	Total Labor Cost	Downtime Cost/hr	Total Downtime Cost	Total Cost	Total Savings
HBL1389MQ*	\$299.00	\$53.00	20 minutes	\$17.67	\$750.00	\$250.00	\$566.67	\$342.33
HBLDS3MQ*	\$411.00	\$53.00	20 minutes	\$17.67	\$750.00	\$250.00	\$678.67	\$309.33

Note: *MotorQuick catalog numbers are based on the average cost of the various designs.

30 Ampere, 600 Volts AC



Quick Disconnect Switches

Description	Catalog Number
Type 1 Non-Metallic Enclosure 30A 3 Pole 600V AC	
HBL1389D with one pre-wired LINKOSITY® female receptacle (load side).	HBL1389MQR
HBL1389D with 5 foot pre-wired LINKOSITY® female cable (load side).	HBL1389MQ5
HBL1389D with one pre-wired LINKOSITY® male receptacle (line side) and one pre-wired LINKOSITY® female receptacle (load side).	HBL1389MQR2
Type 4X Non-Metallic Enclosure 30A 3 Pole 600V AC	
HBLDS3 with one pre-wired LINKOSITY® female receptacle (load side).	HBLDS3MQR
HBLDS3 with 5 foot pre-wired LINKOSITY® female cable (load side).	HBLDS3MQ5
HBLDS3 with one pre-wired LINKOSITY® male receptacle (line side) and one pre-wired LINKOSITY® female receptacle (load side).	HBLDS3MQR2
Type 4X Stainless Steel Enclosure 30A 3 Pole 600V AC	
HBLDS3SS with one pre-wired LINKOSITY® female receptacle (load side).	HBLDS3SSMQR
HBLDS3SS with 5 foot pre-wired LINKOSITY® female cable (load side).	HBLDS3SSMQ5
HBLDS3SS with one pre-wired LINKOSITY® male receptacle (line side) and one pre-wired LINKOSITY® female receptacle (load side).	HBLDS3SSMQR2



Accessories

Description	Catalog Number
3P 4W LINKOSITY® male receptacle for installation on motor.	RM3004PA001
3P 4W LINKOSITY® female receptacle for installation in switch.	RF3004PA001
3P 4W LINKOSITY® double ended (male/female) 5-50 foot cable.	PH3004PAxxx*
3P 4W LINKOSITY® single ended (female) 5-50 foot cable.	PF3004PAxxx*
Cord connector, ¼ in. NPT .63-.75 in. (16.0-19.1) diameter.	SHC1037CR
Lock-on cover for LINKOSITY® connections.	PH2030C

Note: *Cables available from 5-50 feet in 5 foot increments. To purchase larger cable, replace the **xxx** with the required length in feet. (Examples: **PH3004PA005** = 5 foot cable, **PH3004PA050** = 50 foot cable.)

Sample Set Up

(1) **HBLDS3MQR** + (1) **PH3004PAxxx** + (1) **RM3004PA001** = **Total Set Up****



Note: ** Retrofit parts available for pre-existing disconnect switch installations. Please consult factory for availability.

Valox® is a trademark of SABIC Innovative Plastics, acquired from General Electric Company.

NEMA 1 Disconnect Switches

“Suitable as Motor Disconnects”



HBL1389D

Thermoplastic Cover on a Plated Steel Base
Durable, non-conductive cover



HBL1379D

All Aluminum Cover and Base
Base is pre-drilled for rear surface mounting

Shared Features

Wiring conduit knockouts

- 1/2" and 3/4" NPT
- Top, bottom or back wire entry points

Surface mount control

Switch can be locked in the off position as a method of compliance with OSHA lockout/tagout

Circuit-Lock® NEMA 1 Enclosures with Switch

Ideal for use in industrial environments, i.e. conveyer systems, industrial fans, etc.

Amp	Poles	Enclosure Material	HP Rating				Catalog Number
			120V AC 1Ø	240V AC 3Ø	480V AC 3Ø	600V AC 3Ø	
30	2	Thermoplastic	2	5	10	15	HBL1392D
30	3	Thermoplastic	3	7.5	15	20	HBL1389D
30	2	Aluminum	2	5	10	15	HBL1372D
30	3	Aluminum	3	7.5	15	20	HBL1379D

Note: See page F-17 for technical information.

Circuit-Lock® NEMA 1 Enclosures without Switch

For use with switches shown on page F-17.

Description	Cover Material	Base Material	No. Equipment Grounds	Catalog Number
For use with 30A switch.	Thermoplastic	Steel	1	HBL1390
For use with 30A switch.	Aluminum	Aluminum	2	HBL1370



HBL1389D



HBL1379D



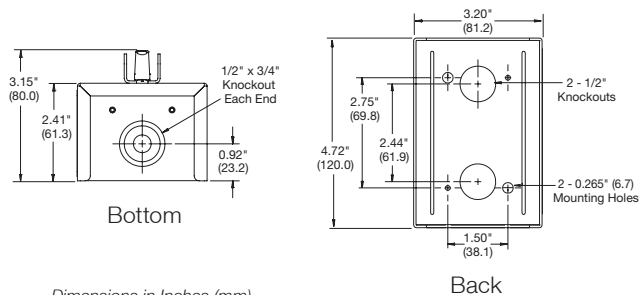
HBL1390



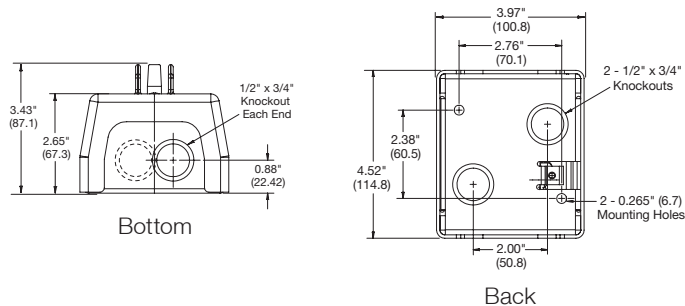
HBL1370

Dimensions

HBL1370, HBL1372D and HBL1379D



HBL1390, HBL1389D and HBL1392D

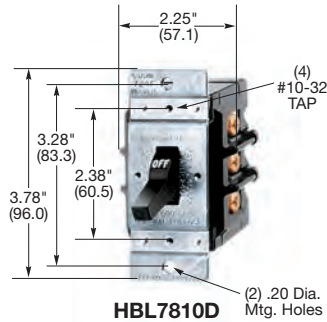


Dimensions in Inches (mm)

30 Ampere, 600 Volts AC Manual Motor Controllers

"Suitable as Motor Disconnect"

30A 600V AC Manual Motor Controllers, Double Pole



Description	Catalog Number
30A, double pole, single throw, AC manual motor controller, black nylon handle, side and back wired.	HBL7832D
30A, double pole, single throw, AC manual motor controller, black nylon handle, short toggle.	HBL7832DS
30A, double pole, single throw, AC manual motor controller. 50 piece bulk pack.	HBL7832DX
HBL7832D in HBL1390 Type 1 enclosure with non-metallic cover, ½ in. and ¾ in. knockouts on top, bottom and back of steel frame.	HBL1392D
HBL7832D in HBL1370 metal Type 1 enclosure.	HBL1372D
HBL7832D in NEMA 3R non-metallic enclosure.	HBL13R22D
HBL7832D in HBL13R90 metal Type 3R enclosure.	HBL13R92D
HBL7832D in NEMA 3R flip-lid enclosure.	HBL13R12D

Note: See page F-17 for technical information.

30A 600V AC Manual Motor Controllers, Three Pole

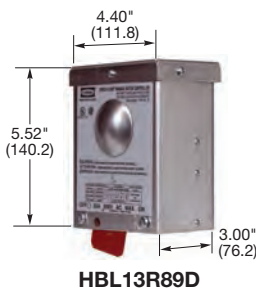
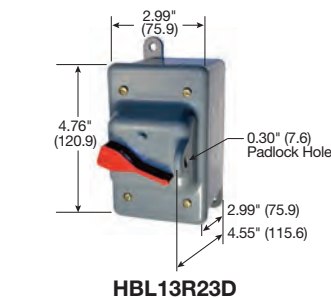
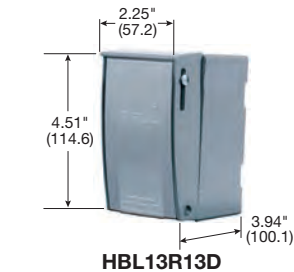


Description	Catalog Number
30A, three pole, single throw, AC manual motor controller, black nylon handle, side and back wired.	HBL7810D
30A, three pole, single throw, AC manual motor controller, black nylon handle, short toggle.	HBL7810DS
HBL7810D in HBL1390 Type 1 enclosure with non-metallic cover, ½ in. and ¾ in. knockouts on top, bottom and back of steel frame.	HBL1389D
HBL7810D in HBL1370 metal Type 1 enclosure.	HBL1379D
HBL7810D in NEMA 3R non-metallic enclosure.	HBL13R23D
HBL7810D in HBL13R90 metal Type 3R enclosure.	HBL13R89D
HBL7810D in NEMA 3R flip-lid enclosure.	HBL13R13D
30A, 600V, three pole, rotary controller in NEMA 4X stainless steel enclosure.	HBL13S33D
30A, 600V, three pole, rotary controller in NEMA 4X non-metallic enclosure.	HBL13X33D

Note: See page F-17 for technical information.

Motor Rating

Product	120V AC	240V AC	480V AC	600V AC	Phase
30A Double Pole	2HP	5HP	10HP	15HP	1
30A Three Pole	3HP	7½HP	15HP	20HP	3
40A Double Pole	2HP	5HP	10HP	15HP	1
40A Three Pole	3HP	7½HP	15HP	20HP	3
50A Double Pole	2HP	5HP	10HP	15HP	1
50A Three Pole	3HP	7½HP	15HP	25HP	3
60A Double Pole	-	10HP	15HP	20HP	1
60A Three Pole	-	10HP	25HP	30HP	3
85A Double Pole	-	10HP	15HP	20HP	1
85A Three Pole	-	10HP	25HP	40HP	3



Dimensions in Inches (mm)