



Low Profile NPT, PG and Metric Thread Connectors

Non-Metallic Cord Connectors.

IP66*
SUITABILITY



Low Profile NPT Cord Connectors

NPT Hub Size	Cord Diameter Inches (mm)	Black	Gray	Non-metallic Locknuts
3/8	.18"-.31" (4.6-7.9)	SEC38BA*	SEC38GA*	31622002LPK50
1/2	.17"-.45" (4.3-11.4)	SEC50BA	SEC50GA	31622003LPK50
3/4	.25"-.48" (6.35-12.19)	—	SEC75RGA	31622007LPK50
3/4	.45"-.71" (11.4-18.0)	SEC75BA	SEC75GA	31622007LPK50
1	.59"-1.00" (15-25.4)	SEC100BA	SEC100GA	31622008LPK50

Note: See pages V-78 to V-88 for technical information and dimensional drawings.
Catalog numbers with "PK50" suffix are bulk packed 50 pieces.



Low Profile PG^Δ Cord Connectors

Hub Size	Cord Diameter Inches (mm)	Black	Gray	Non-metallic Locknuts
PG7	.11"-.25" (2.9-6.4)	SECP7BA*	SECP7GA*	LNP7BPK100
PG9	.18"-.31" (4.6-7.9)	SECP9BA*	SECP9GA*	LNP9BPK100
PG11	.23"-.40" (5.8-10.0)	SECP11BA*	SECP11GA*	LNP11BPK100
PG13.5	.17"-.47" (4.3-11.9)	SECP13BA	SECP13GA	LNP13BPK100
PG16	.23"-.53" (5.8-13.5)	SECP16BA	SECP16GA	LNP16BPK100
PG21	.45"-.71" (11.4-17.9)	SECP21BA	SECP21GA	LNP21BPK100
PG29	.59"-.99" (15-25.2)	SECP29BA	SECP29GA	LNP29BPK25
PG36	.88"-1.30" (22.2-32.0)	SECP36BA	SECP36GA	LNP36BPK25



Low Profile Metric Cord Connectors

Hub Size	Cord Diameter Inches (mm)	Black	Gray	Non-metallic Locknuts
M12	.12"-.25" (2.9-6.4)	SECM12B	SECM12G	LNM12BPK100
M16	.11"-.31" (2.7-7.9)	SECM16B	SECM16G	LNM16BPK100
M20	.17"-.45" (4.3-11.4)	SECM20B*	SECM20G*	LNM20BPK100
M25	.49"-.71" (12.3-18.0)	SECM25B*	SECM25G*	LNM25BPK100
M32	.59"-.100" (15.0-25.4)	SECM32B*	SECM32G*	LNM32BPK100
M40	.87"-1.30" (22.0-32.0)	SECM40B	SECM40G	LNM40BPK100

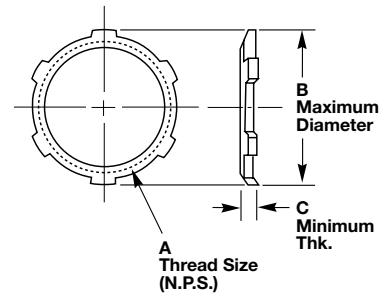
Note: See pages V-78 to V-88 for technical information and dimensional drawings.
Catalog numbers above with "PK100" suffix, i.e. LNP7BPK100, are bulk packed 100 per carton.
Catalog numbers above with "PK25" suffix, i.e. LNP29BPK25, are bulk packed 25 per carton.
*Items indicated are UL recognized components.
ΔPanzergerwinde.



NPT Thread Locknuts

Zinc-Plated Steel

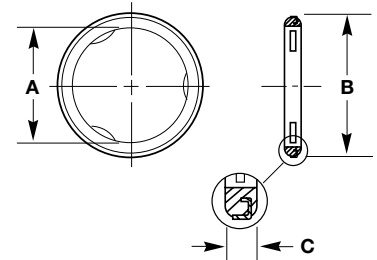
NPT Hub Size	A Inside Diameter Inches	B Outside Dia. Inches (mm)	C Thickness Inches (mm)	Steel Catalog Number
½	½"-14	1.14" (29.0)	.09" (2.3)	00322001LPK50
¾	¾"-14	1.43" (36.3)	.11" (2.8)	00322002LPK50
1	1"-11½	1.77" (45.0)	.13" (3.3)	00322003LPK50
1¼	1¼"-11½	2.28" (57.9)	.13" (3.3)	00322004LPK50
1½	1½"-11½	2.60" (66.0)	.13" (3.3)	00322005LPK50



Metal Clad Sealing O-Rings – Sizes ½ - 4

Zinc-Plated Steel with Neoprene Ring

NPT Hub Size	A Inside Diameter Inches (mm)	B Outside Dia. Inches (mm)	C Thickness Inches (mm)	Catalog Number
½	.80" (20.3)	1.08" (27.4)	.16" (3.2)	20509001
¾	1.00" (25.4)	1.34" (34.0)	.16" (3.2)	20509002
1	1.25" (31.6)	1.63" (41.4)	.16" (3.2)	20509003
1¼	1.61" (40.9)	2.00" (50.8)	.16" (3.2)	20509004
1½	1.84" (46.7)	2.36" (59.9)	.16" (3.2)	20509005
2	2.31" (58.7)	2.83" (71.9)	.16" (3.2)	20509006

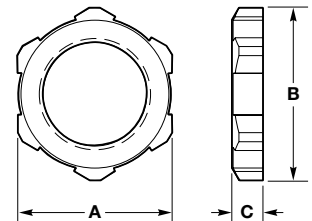


Chrome Plated Steel with Neoprene Ring

2½	2.91" (73.9)	3.44" (87.4)	.24" (6.1)	20509007
3	3.52" (89.4)	4.08" (103.6)	.24" (6.1)	20509008

Nylon PG Thread Locknuts

PG Thread Size	A Inches (mm)	B Inches (mm)	C Inches (mm)	Catalog Number
PG7	.75" (19.1)	.80" (20.3)	.22" (5.6)	LNP7BPK100
PG9	.86" (21.8)	.91" (23.2)	.22" (5.6)	LNP9BPK100
PG11	.94" (23.9)	1.03" (26.2)	.22" (5.6)	LNP11BPK100
PG13.5	1.06" (26.9)	1.14" (29.0)	.24" (6.1)	LNP13BPK100
PG16	1.18" (30.0)	1.30" (33.0)	.25" (6.1)	LNP16BPK100
PG21	1.41" (35.8)	1.54" (39.1)	.25" (6.1)	LNP21BPK100
PG29	1.81" (46.0)	2.00" (50.8)	.25" (6.1)	LNP29BPK25
PG36	2.24" (56.9)	2.50" (63.5)	.25" (6.1)	LNP36BPK25



Nylon Metric Thread Locknuts

PG Thread Size	A Inches (mm)	B Inches (mm)	C Inches (mm)	Catalog Number
M12	.75" (19.1)	.82" (20.8)	.22" (5.6)	LNM12BPK100
M16	.87" (22.09)	.98" (25.0)	.22" (5.6)	LNM16BPK100
M20	1.06" (27.0)	1.18" (30.0)	.25" (6.4)	LNM20BPK100
M25	1.38" (35.1)	1.54" (39.1)	.28" (7.1)	LNM25BPK100
M32	1.61" (40.9)	1.80" (45.7)	.28" (7.1)	LNM32BPK100
M40	1.97" (50.0)	2.18" (55.4)	.28" (7.1)	LNM40BPK100

Dimensions shown are approximate and are subject to change without notice.