

# **BALDOR**® • ***RELIANCE***

## **Product Information Packet**

# **EM4316T**

**75HP,1780RPM,3PH,60HZ,365T,A36068M,TEFC**

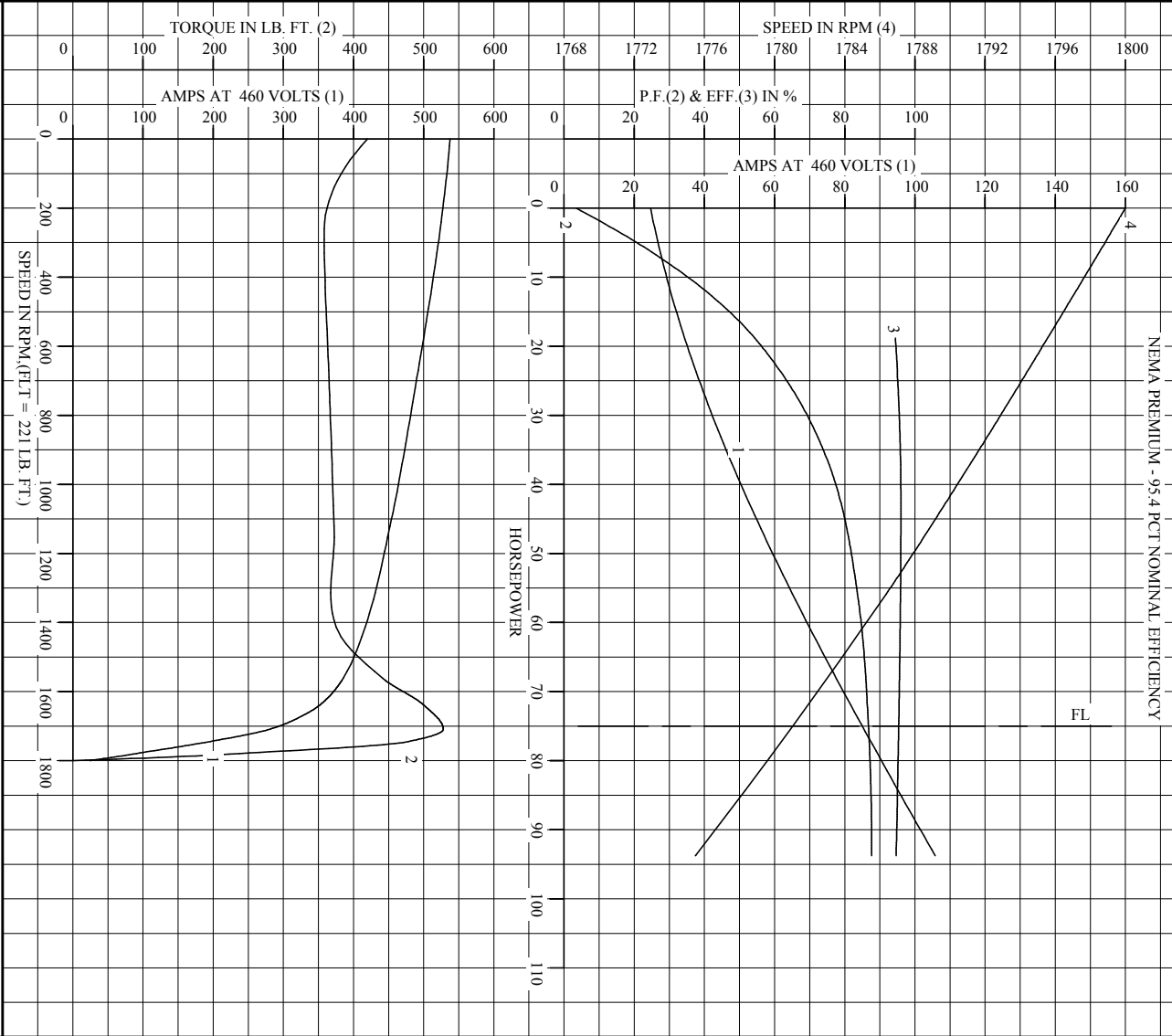
Part Detail							
Revision:	T	Status:	PRD/A	Change #:		Proprietary:	No
Type:	AC	Elec. Spec:	A36WG1816	CD Diagram:	416820-002	Mfg Plant:	
Mech. Spec:		Layout:	617428-032	Poles:	04	Created Date:	11-07-2011
Base:		Eff. Date:	10-12-2017	Leads:	3#4,6#6		

Specs			
Catalog Number:	EM4316T	Feedback Device:	NO FEEDBACK
Enclosure:	TEFC	Heater Indicator:	No Heater
Frame:	365T	Insulation Class:	F
Frame Material:	Iron	Inverter Code:	Inverter Ready
Output @ Frequency:	75.000 HP @ 60 HZ	KVA Code:	G
Synchronous Speed @ Frequency:	1800 RPM @ 60 HZ	Lifting Lugs:	No Lifting Lugs
Voltage @ Frequency:	230.0 V @ 60 HZ	Motor Lead Quantity/Wire Size:	3 @ 4 AWG
	460.0 V @ 60 HZ	Motor Type:	A36068M
XP Class and Group:	None	Mounting Arrangement:	F1
XP Division:	Not Applicable	Power Factor:	87
Agency Approvals:	CCSA US	Pulley End Bearing Type:	Ball
	CSA EEV	Pulley Face Code:	Standard
Auxillary Box:	No Auxillary Box	Shaft Ground Indicator:	No Shaft Grounding
Base Indicator:	Rigid	Shaft Rotation:	Reversible
Bearing Grease Type:	Polyrex EM (-20F +300F)	Shaft Slinger Indicator:	No Slinger
Current @ Voltage:	169.000 A @ 230.0 V	Speed Code:	Single Speed
	84.900 A @ 460.0 V	Motor Standards:	NEMA
Design Code:	B	Starting Method:	Direct on line

<b>Drip Cover:</b>	No Drip Cover	<b>Thermal Device - Bearing:</b>	None
<b>Duty Rating:</b>	CONT	<b>Thermal Device - Winding:</b>	None

<b>Nameplate NP2383L</b>										
<b>CAT.NO.</b>	EM4316T			<b>SPEC NO.</b>	A36-1115-1816					
<b>HP</b>	75	<b>AMPS</b>	169/84.9		<b>VOLTS</b>	230/460		<b>DESIGN</b>	B	
<b>FRAME</b>	365T	<b>RPM</b>	1780	<b>HZ</b>	60	<b>AMB</b>	40	<b>SF</b>	1.15	
<b>DRIVE END BEARING</b>	65BC03J30X			<b>PHASE</b>	3	<b>DUTY</b>	CONT		<b>INSUL.CLASS</b>	F
<b>OPP D.E. BEARING</b>	65BC03J30X			<b>TYPE</b>	P	<b>ENCL</b>	TEFC	<b>CODE</b>	G	
<b>SER.NO.</b>				<b>POWER FACTOR</b>	87		<b>NEMA-NOM-EFFICIENCY</b>	95.4		
<b>NEMA NOM/CSA QUOTED EFF</b>				<b>MAX CORR KVAR</b>	14.0		<b>GUARANTEED EFFICIENCY</b>	94.5		
	SUIT FOR 208V AT 186 AMPS				<b>MOTOR WEIGHT</b>					

REL. S.O. \_\_\_\_\_ RPM 1780 S.F. 1.15 ROTOR 708559030EE  
 FRAME 365T VOLTS 230/460 NEMA DESIGN B TEST S.O. CALCULATED DATA  
 HP 75 AMPS 169/84.9 CODE LETTER G TEST DATE ---  
 TYPE P DUTY CONT ENCLOSURE FCXE STATOR RES. @ 25 °C .0215/.0860  
 PHASE/HERTZ 3/60 AMB °C/INSUL 40/F E/S 892348 OHMS (BETWEEN LINES)



**BALDOR**  
 A MEMBER OF THE ABB GROUP

DR. BY W.L. SMITH  
 CK. BY J.J. HARRISON  
 App. BY W.L. SMITH  
 DATE 11/02/11

**A-C MOTOR**  
**PERFORMANCE**  
**CURVES**

A36WG1816-R001  
 ISSUE DATE 11/02/11

Printed on 11/10/11 13:11 @ ragsum

REL. S.O.	FRAME	HP	TYPE	PHASE/HERTZ	RPM	VOLTS
	365T	75	P	3/60	1780	230/460
AMPS	DUTY	AMB °C/ INSUL.	S.F.	NEMA DESIGN	CODE LETTER	ENCL.
169/84.9	CONT	40/F	1.15	B	G	FCXE
E/S	ROTOR	TEST S.O.	TEST DATE	STATOR RES. @25 °C (BETWEEN LINES)		
892348	708559030EE	---	---	.0215/.0860		

PERFORMANCE


LOAD	HP	AMPERES	RPM	POWER FACTOR %	EFFICIENCY %
NO LOAD	0	24.7	1800	3.42	0
1/4	18.8	34.3	1796	54.3	94.4
2/4	37.5	48.3	1791	75.8	95.9
3/4	56.2	65.6	1786	83.7	95.9
4/4	75.0	84.9	1781	86.8	95.4
5/4	93.8	106	1775	87.6	94.6

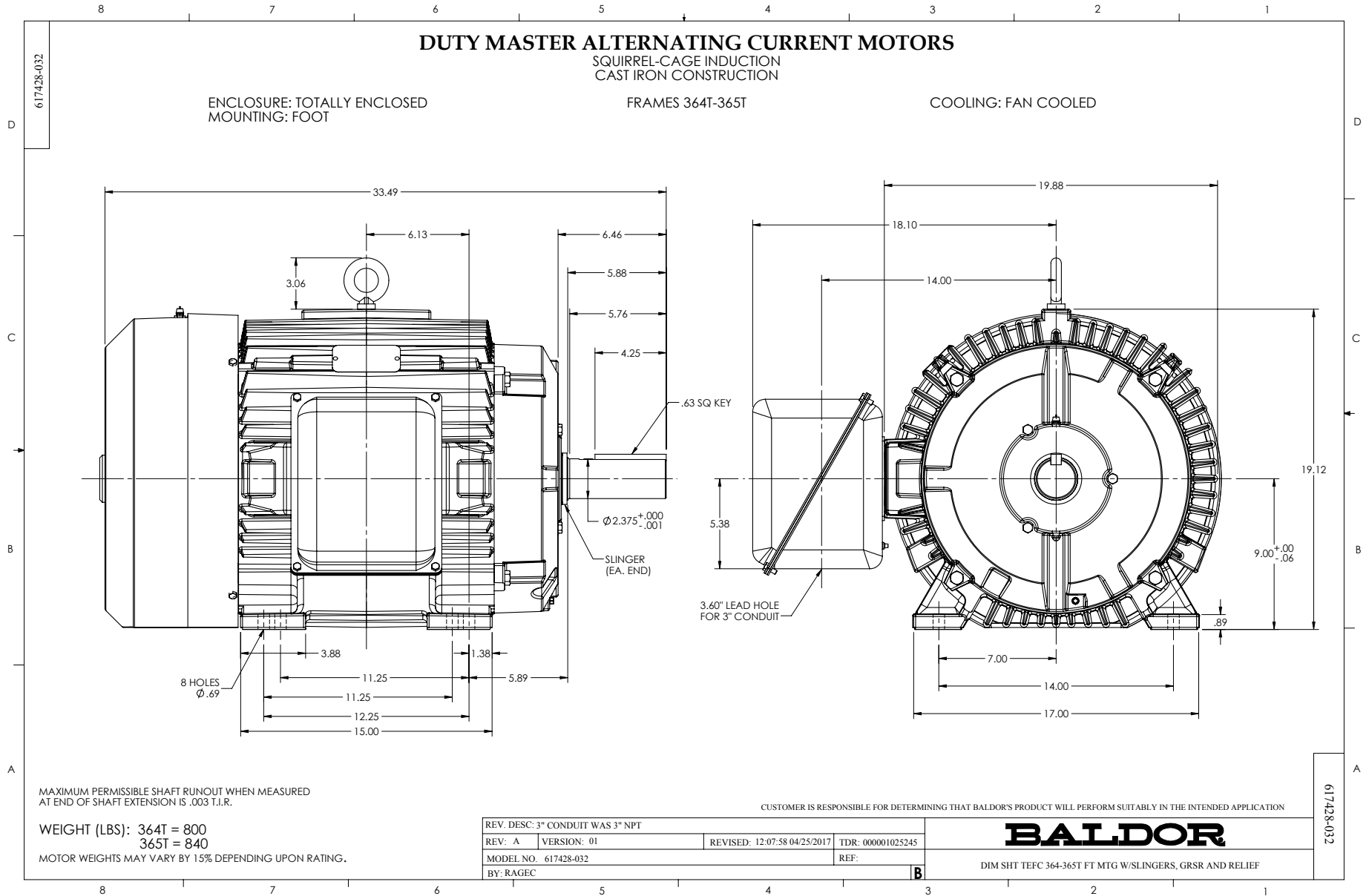
SPEED TORQUE

	RPM	TORQUE % FULL LOAD	TORQUE LB.-FT.	AMPERES
LOCKED ROTOR	0	190	420	538
PULL UP	270	162	358	523
BREAKDOWN	1709	239	528	280
FULL LOAD	1781	100	221	84.9

AMPERES SHOWN FOR 460. VOLT CONNECTION. IF OTHER VOLTAGE CONNECTIONS ARE AVAILABLE, THE AMPERES WILL VARY INVERSELY WITH THE RATED VOLTAGE

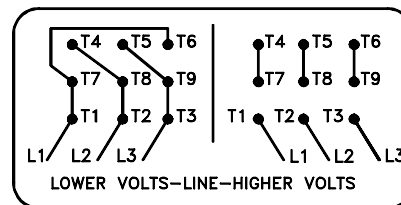
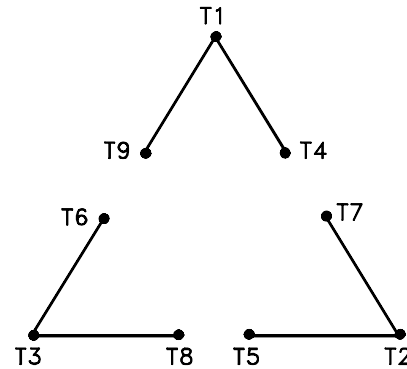
REMARKS: CALCULATED DATA  
NEMA PREMIUM - 95.4 PCT NOMINAL EFFICIENCY

	DR. BY	W. L. SMITH	<b>A-C MOTOR</b> <b>PERFORMANCE DATA</b> A36WG1816-R001 ISSUE DATE 11/02/11
	CK. BY	J. J. HARRISON	
A MEMBER OF THE ABB GROUP		APP. BY W. L. SMITH DATE 11/02/11	



416820-002

A-C MOTOR  
 CONNECTION DIAGRAM  
 STANDARD 9 LEAD DELTA-CONNECTED



(N.P. 1575-B)

416820-002

REV. DESC: LOADED TO BUS, C/R 335225		
REV. LTR: -	VERSION: 00	TDR: 000000538207
FILE: \MGA\00000\661	REVISED: 10: 47: 51 04/30/2010	
MTL: -	BY: RAGRA	

**BALDOR**

CONN DIAG - STANDARD 9 LEAD, DELTA-CONNECTED

SH 1 of 1