



Electrically held lighting contactor (convertible to mechanically held)
30 Amp
2NO / 2NC Poles
Maximum voltage rating 600VAC
Control voltage 460-480V 60Hz / 440V 50Hz
Open device (no enclosure)

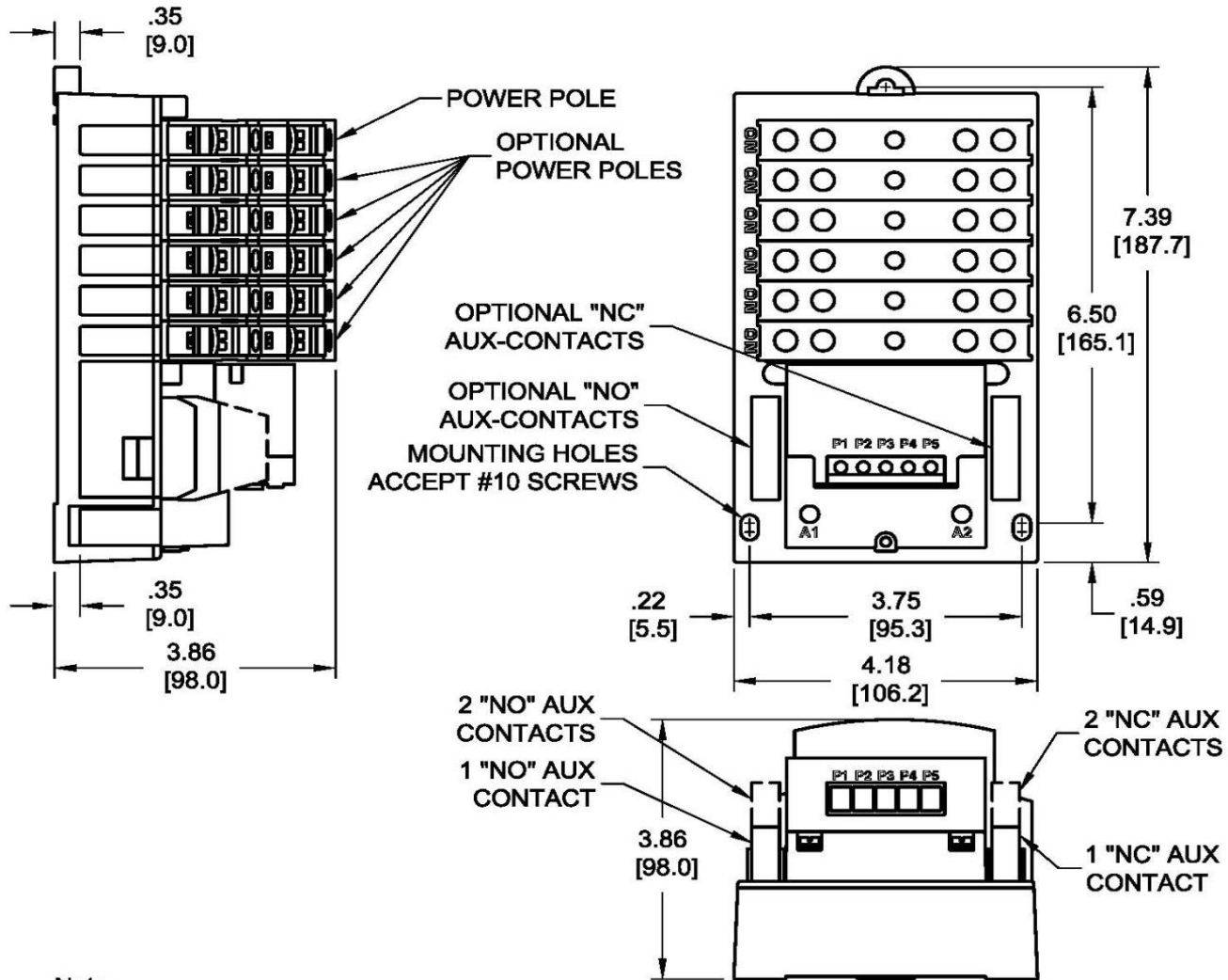


Image is representative and may not depict the actual product.

General technical data:	
Weight	2 lb
Height x Width x Depth	7.39 x 4.18 x 3.86 in.
Finger-safe (main circuit / control circuit)	Yes / Yes
Maximum altitude	6560 ft
Ambient storage temperature	(-30 to 65)°C / (-22 to 149)°F
Ambient operating temperature	(-25 to 40)°C / (-13 to 104)°F
Humidity (% non-condensing)	(no data)
Country of origin	USA
Contactors:	
Number of poles	2NO / 2NC
Mechanical operating cycles	100,000
Current ratings:	
Tungsten (poles per phase)	20A @277V 1p 1ph
	20A @480V 2p 1ph
	20A @480V 3p 3ph
Ballast (poles per phase)	30A @347V 1p 1ph
	30A @600V 2p 1ph
	30A @600V 3p 3ph
General & resistive (poles per phase)	30A @600V 1p 1ph
	30A @600V 2p 1ph
	30A @600V 3p 3ph
Internal/standard auxiliary contact:	
Number of NC / NO auxiliary contacts	0NC / 0NO
Rating	NA
Optional auxiliary contact:	
Max number of NC / NO auxiliary contacts	2NC / 2NO
Rating	10A@600VAC (A600)
Coil:	
Voltage	460-480V 60Hz / 440V 50Hz Coil
Sealed watts	(no data)
Inrush / sealed power	248 / 28 VA
Normal coil operating limits (% of rated voltage)	85% - 110%
Typical drop-out volts (% of rated voltage)	(no data)
Pick-up time / Drop-out time	(no data)
Disconnect type (none):	
Rating	NA
Fuse type accepted	NA

Enclosure:	
Type	Open device (no enclosure)
Rating	NA
Mounting/wiring:	
Mounting orientation	Vertical
Mounting type	Surface
Line side connection type / torque	screw / 35 lb-in.
Line side solid & stranded conductors	2 x (14 - 8 AWG) 75°C CU
Load side connection type / torque	screw / 35 lb-in.
Load side solid & stranded conductors	2 x (14 - 8 AWG) 75°C CU
Coil connection type / torque	Screw / 15 lb in.
Coil solid & stranded conductors	2 x (18 - 14 AWG) CU 60-75°C
Main auxiliary contact connection type / torque	NA
Main auxiliary contact solid & stranded conductors	NA
Short circuit current rating:	
Fuses	100kA@600V (Class R or J 40A max)
Thermal magnetic circuit breaker	24kA@240V; 65kA@480V; 25kA@600V (40A max CB)
Additional information:	
	Brochure

DUAL DIMENSIONS INCHES [MILLIMETER] (ESTIMATING ONLY)



Note:

- [1] Mounting Dimensions remain the same for 1 to 12 Poles
- [2] Line and Load terminals are inter-changeable
- [3] Up to 2NO and 2NC auxiliary contacts can be added onto the base product
- [4] Same Power Pole can be configured as NO type or NC type

REF. DRAWING D38296

