

PANDUIT[®] infrastructure for a connected world



**Space Saving
Cable Management Rack Systems**



Maximize Space Utilization, Enhance Network Reliability

The trend towards consolidation, virtualization and automation in the enterprise is driving the need to maximize space utilization to reduce capital expenditures and operational costs while maintaining network reliability and availability. This trend is placing greater demands on the physical infrastructure to help manage growing cable densities, larger network equipment and increasing energy usage.

Space Optimized, High Capacity Cable Management Systems

Panduit builds on years of experience as a leader in cable management, integrating best practices and application knowledge to develop highly reliable and efficient physical infrastructure solutions. Panduit's comprehensive offering of vertical cable management, horizontal cable management, and rack solutions reduces space required to route, manage and protect high cable capacities, providing the lowest total cost of ownership. These product sets can be combined to provide an optimized solution for virtually any application. PatchRunner™ High Capacity and PatchRunner™ 2 Vertical Cable Management Systems address the needs of the data center and telecommunications rooms to deliver improved network performance and reduced real estate costs. Superior cable management features and innovative vertical RU mounting maximize capacity and enable efficient moves, adds, and changes to reduce operational costs.

PatchRunner™ High Capacity Vertical Cable Management System

PatchRunner™ High Capacity Vertical Cable Managers are optimized to provide the maximum amount of capacity, flexibility and accessibility for high density switch and server applications.

PatchRunner™ 2 Vertical Cable Management System

PatchRunner™ 2 Vertical Cable Managers are designed to provide the best combination of features and value for high density enterprise telecommunications rooms and data center applications.

2 Post and 4 Post Racks

PatchRunner™ 2 and PatchRunner™ High Capacity Systems can be seamlessly integrated into Panduit's versatile 2 post and 4 post racks. Designed for today's larger network equipment, Panduit racks provide strength, capacity and thermal features that help ensure network availability. The 2 post and 4 post rack thermal accessories provide proper heat dissipation of active equipment, improving network reliability.

Reduce Real Estate Cost and Space Utilization by **35%** with Panduit High Capacity Cable Management Systems



Floor Space Required

| Layout | Traditional NetRunner™ Vertical Cable Management System | High Density PatchRunner™ High Capacity Vertical Cable Management System | Vertical Patching PatchRunner™ High Capacity Vertical Cable Management System |
|------------------|---|--|---|
| Footprint Width | 114.6" (2.91m) | 68.6" (1.74m) | 44.3"(1.13m) |
| Areas | 21.1 Sq. ft. | 13.4 Sq. ft. | 8.7 Sq. ft. |
| Real Estate Cost | \$54,016 | \$34,304 | \$22,272 |

Real estate cost based on a 2010 Gartner estimate for a Tier 3 data center. Refer to page 18 and 19 for capacity and space requirements for specific solutions.

High Density Solutions for the Cisco^ Nexus 7010 Switch

High performance network switching requires innovation in every aspect of the physical infrastructure. The right solution helps manage equipment, connectivity, and available space for maximum density, scalability and usability. The PatchRunner™ High Capacity Vertical Cable Management System offers the highest cable capacities for maximum densities, scalability, and superior space utilization.



^Cisco is a registered trademark of Cisco Technology Inc.

Maximum Capacity with Minimal Space



- Vertical patching enables two Cisco^ Nexus 7010 Switches to be deployed within a single rack, eliminating the need for a separate patching rack

- Strong, flexible fingers support Category 6A cables without deforming



- Enables standard 19" patch panels to be mounted vertically, freeing up rack spaces for additional equipment

- Allows patch panels to be positioned near switch ports, optimizing patch cord lengths



- Accepts either copper or fiber patch panels
- Minimizes slacking and allows for a more efficient use of the vertical manager space

Maximum Versatility and Strength



- The 4 post rack depth encases Nexus 7010 switches, providing increased physical protection

- Rack features allow quick POU mounting

- UL listed 2500 lb. (1134kg) load rating securely supports two Nexus 7010 switches and cabling

Infrastructure Showcase

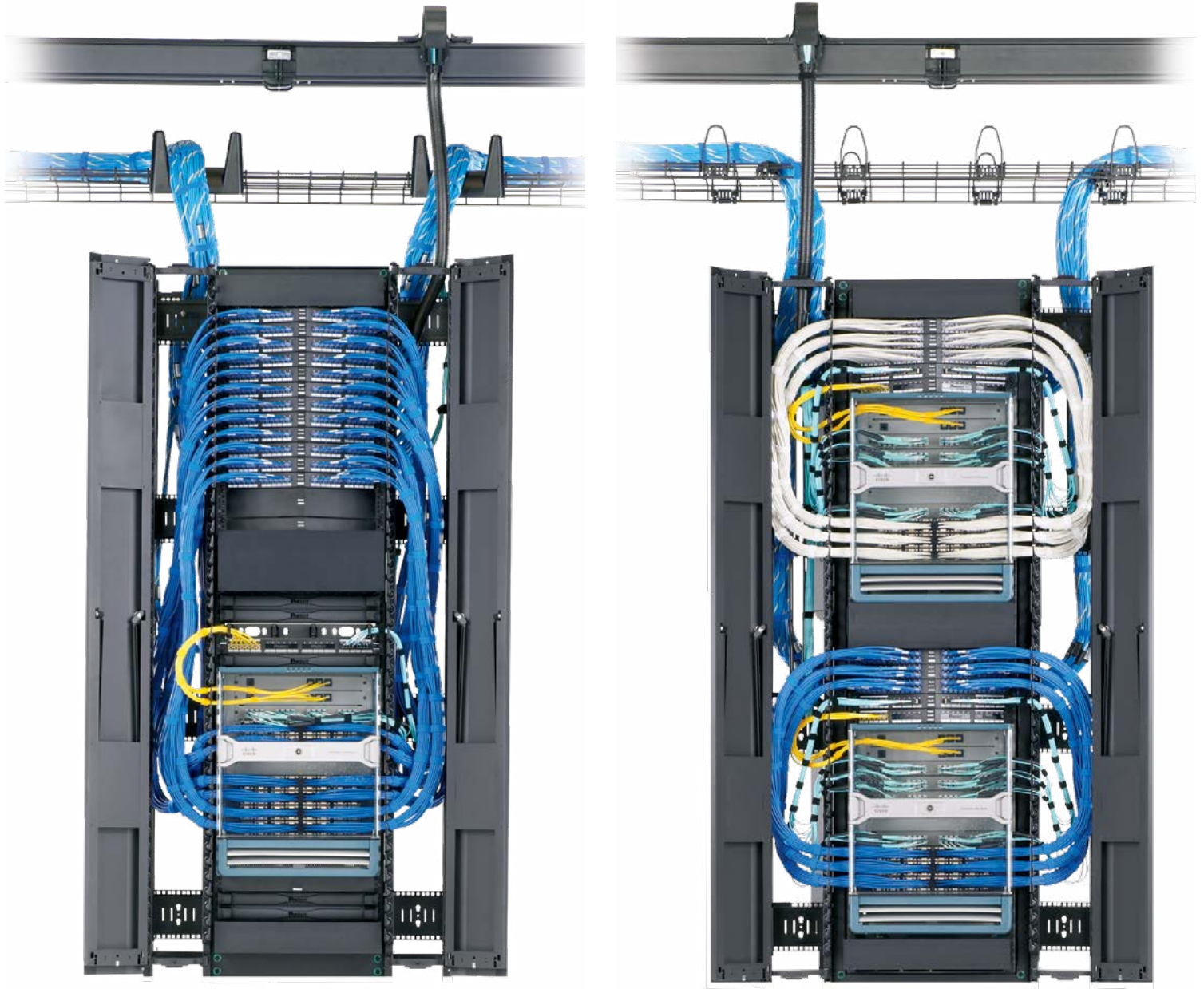


- The push shut door with visual and audible feedback delivers a clean aesthetic look

- End panels enable the vertical managers to be closed off, increasing protection and providing a clean look at the end of your lineup

High Density Solutions for the Cisco^ Nexus 7009 Switch

Effectively deploying high performance network switches requires in-depth knowledge of cable management, infrastructure, thermal management, and the ability to apply that knowledge in the creation of superior solutions.



Equipment management protects equipment, delivers UL rated support, and enables equipment airflow patterns. Vertical cable management provides slacking of patch cords, and provides options to simplify system organization and interface to the system-wide infrastructure

- FiberRunner® and Wyr-Grid® Overhead Routing Systems (depicted at top left and right) route, manage, and protect cables throughout the data center*.

Cable Management



- Space between individual fingers organize up to 48 Category 6A cables



- Deep vertical managers provide space to manage high densities

Thermal Management

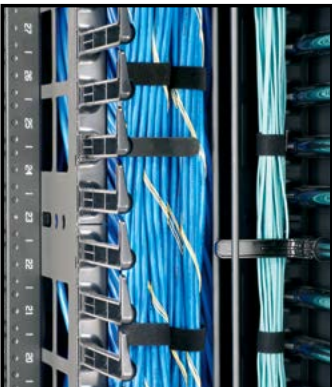


- Vertical strain relief bars effectively manage structured cabling in the rear of the rack and separate cable types

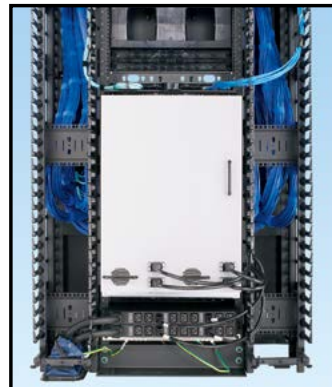


- Flexible power outlet unit mounting for any equipment power requirements

Infrastructure



- Open areas enable equipment airflow patterns



- Front to back spaces can be closed off for hot/cold aisle applications

*Download the Wyr-Grid® Overhead Cable Tray Routing System brochure (SA-RKCB18) and FiberRunner® Application Guide (SA-FRCB02) at www.panduit.com.

^Cisco is a registered trademark of Cisco Technology Inc.

PatchRunner™ High Capacity Vertical Cable Management System

1 4 Post Rack

- R4P**
84.0"H x 23.25"W x 30.0"D
45 rack spaces
- R4P23**
84.0"H x 23.25"W x 23.0"D
45 rack spaces
- R4P36**
84.0"H x 23.25"W x 36.0"D
45 rack spaces
- R4P42**
84.0"H x 23.25"W x 41.5"D
45 rack spaces



The capacity of this vertical manager is ideal for Category 6A cabling or other cabling systems. Integral EIA zero rack space mounting capability in the back of the manager allows equipment to be patched in the PatchRunner™ High Capacity Vertical Cable Manager, freeing up valuable rack space for equipment and allowing the use of shorter length patch cords.

2 PEV12

- PatchRunner™ High Capacity Vertical Cable Managers
- Available in 6", 8", 10", and 12" widths



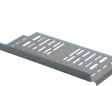
3 PED12B1

- PatchRunner™ High Capacity Dual Hinged Metal Doors
- Available in 6", 8", 10", and 12" widths



4 R4PWF

- Rack Top Trough with Waterfall creates pathway above rack



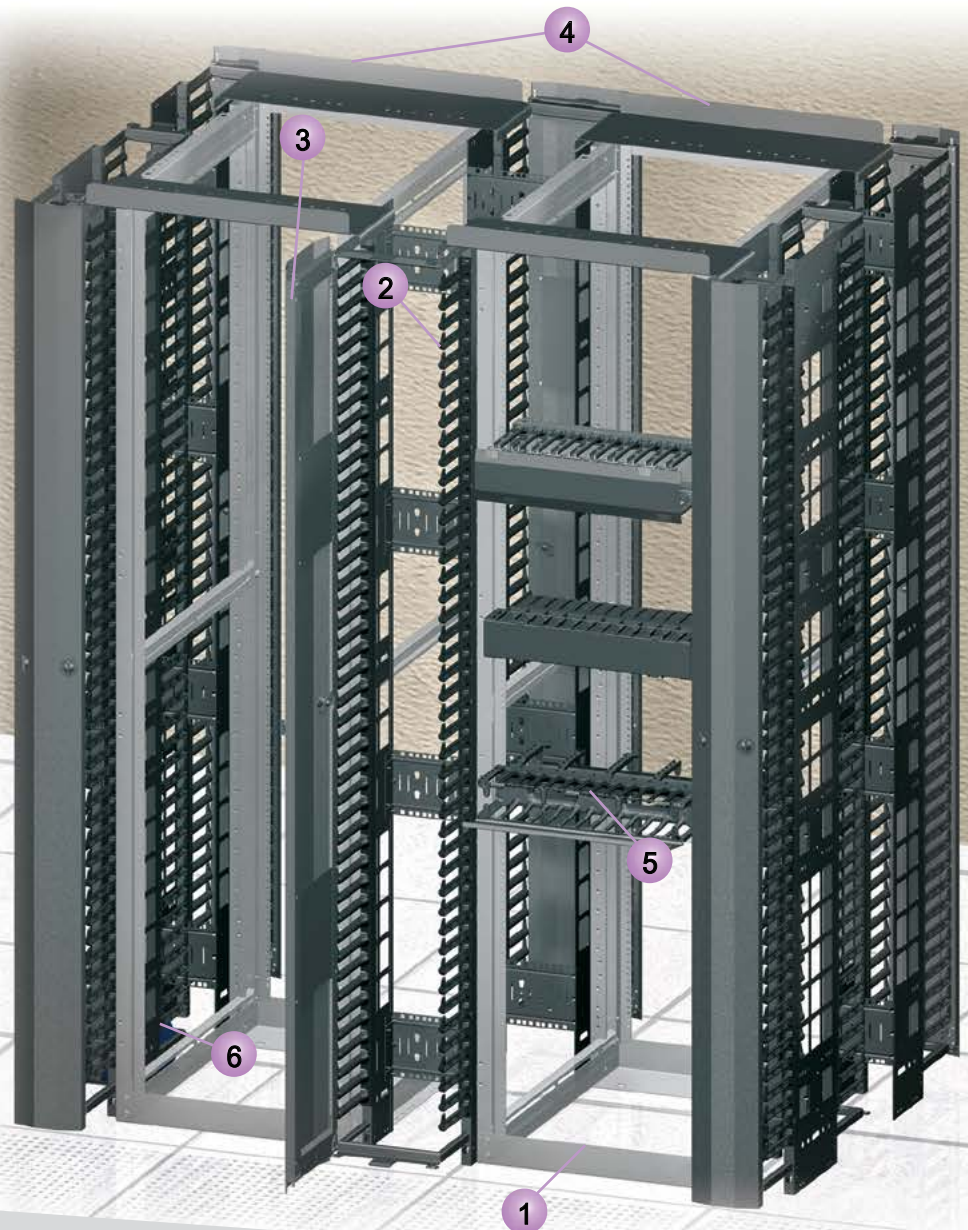
5 NM2

- NetManager™ High Capacity Horizontal Cable Manager



6 RFG6X8

- Cool Boot® Raised Floor Air Sealing Grommet

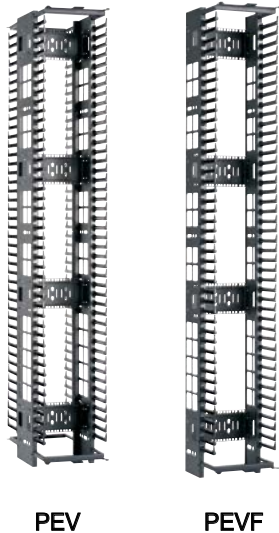


PatchRunner™ High Capacity Vertical Cable Managers



- High capacity minimizes area required for network layout, freeing up valuable floor space
- Allows vertical mounting of many standard EIA 19" accessories, such as patch panels
- Ventilated side walls provide maximum airflow for equipment cooling

- Snap-on finger sections can be removed to improve airflow, and break away fingers allow routing of large cable bundles
- Large finger spacing accommodates up to 48 Category 6A cables
- Optional sure close dual hinged metal doors provide easy access to vertical pathway and provide visual and audible feedback on closure



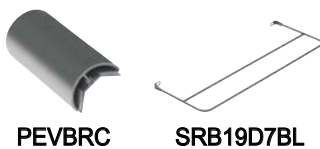
PEV

PEVF



PED

PEVEPB1



PEVBRC

SRB19D7BL

| Part Number | Part Description | No. of Rack Spaces‡ | Std. Pkg. Qty. |
|-------------|------------------|---------------------|----------------|
|-------------|------------------|---------------------|----------------|

High Capacity Dual Sided Vertical Managers

| | | | |
|--------|--|----|---|
| PEV6* | Dimensions: 83.5"H x 6.0"W x 28.1"D (2120mm x 152mm x 714mm) | 45 | 1 |
| PEV8* | Dimensions: 83.5"H x 8.0"W x 28.1"D (2120mm x 203mm x 714mm) | 45 | 1 |
| PEV10* | Dimensions: 83.5"H x 10.0"W x 28.1"D (2120mm x 254mm x 714mm) | 45 | 1 |
| PEV12* | Dimensions: 83.5"H x 12.0"W x 28.1"D (2120mm x 305mm x 714mm) | 45 | 1 |

High Capacity Single Sided Vertical Managers

| | | | |
|---------|--|----|---|
| PEVF6* | Dimensions: 83.5"H x 6.0"W x 15.9"D (2120mm x 152mm x 404mm) | 45 | 1 |
| PEVF8* | Dimensions: 83.5"H x 8.0"W x 15.9"D (2120mm x 203mm x 404mm) | 45 | 1 |
| PEVF10* | Dimensions: 83.5"H x 10.0"W x 15.9"D (2120mm x 254mm x 404mm) | 45 | 1 |
| PEVF12* | Dimensions: 83.5"H x 12.0"W x 15.9"D (2120mm x 305mm x 404mm) | 45 | 1 |

PatchRunner™ High Capacity Dual Hinged Metal Doors

| | | | |
|----------|--|----|---|
| PED6B1* | Dimensions: 82.8"H x 6.1"W x 1.7"D (2103mm x 155mm x 43mm) | 45 | 1 |
| PED8B1* | Dimensions: 82.8"H x 8.1"W x 1.7"D (2103mm x 206mm x 43mm) | 45 | 1 |
| PED10B1* | Dimensions: 82.8"H x 10.1"W x 1.7"D (2103mm x 256mm x 43mm) | 45 | 1 |
| PED12B1* | Dimensions: 82.8"H x 12.1"W x 1.7"D (2103mm x 307mm x 43mm) | 45 | 1 |

Accessories

| | | | |
|-----------|--|----|---|
| PEVEPB1 | End Panel. Dimensions: 83.7"H x 23.2"W x 0.5"D (2125mm x 590mm x 12mm) | 45 | 1 |
| PEVBRC6 | Horizontal cross brace bend radius control clips for PatchRunner™ High Capacity Vertical Cable Managers PEV6 and PEVF6. | – | 1 |
| PEVBRC8 | Horizontal cross brace bend radius control clips for PatchRunner™ High Capacity Vertical Cable Managers PEV8 and PEVF8. | – | 1 |
| PEVBRC10 | Horizontal cross brace bend radius control clips for PatchRunner™ High Capacity Vertical Cable Managers PEV10 and PEVF10. | – | 1 |
| PEVBRC12 | Horizontal cross brace bend radius control clips for PatchRunner™ High Capacity Vertical Cable Managers PEV12 and PEVF12. | – | 1 |
| SRB19D7BL | Strain relief bar extends 7" off the rack; supports, manages, and provides proper bend radius protection. Ideal for use with Category 6A copper cabling installations. | 1 | 1 |

*For part numbers that fit 8' rack, add "96" to end of part number. Overall height for managers is 95.5" (2426mm). For 8' doors, add "96" before B1. For example: PED696B1.

Overall door height is 94.4" (2399mm).

‡One rack space = 1.75" (44.45mm).

All product color is black.

For PatchRunner™ High Capacity Vertical Cable Manager Specifications, see page 18.

PatchRunner™ 2 Vertical Cable Management System

1 2 Post Rack

R2P

84.0"H x 20.3"W x 3.0"D
45 rack spaces
aluminum

R2P96

96.0"H x 20.3"W x 3.0"D
52 rack spaces
aluminum



Provides cost effective solutions that organize, manage, protect and showcase network cabling while ensuring system performance and reliability. Optimal compatibility with Panduit racks, patch panels, and connectivity provides a complete end-to-end solution.

2 PR2VD12

- 12"W Front and Rear PatchRunner™ 2 Vertical Cable Manager with doors – 45 rack spaces



3 R2PPR2VWF

- Rack Top Trough with Waterfall creates pathway above rack



4 PR2VEP

- End Panel for PatchRunner™ 2 Vertical Cable Managers



5 CMPH2

- 2 RU Open-Access™ Horizontal Cable Manager D-rings



6 WMP1E

- 2 RU PatchLink™ Horizontal Cable Manager



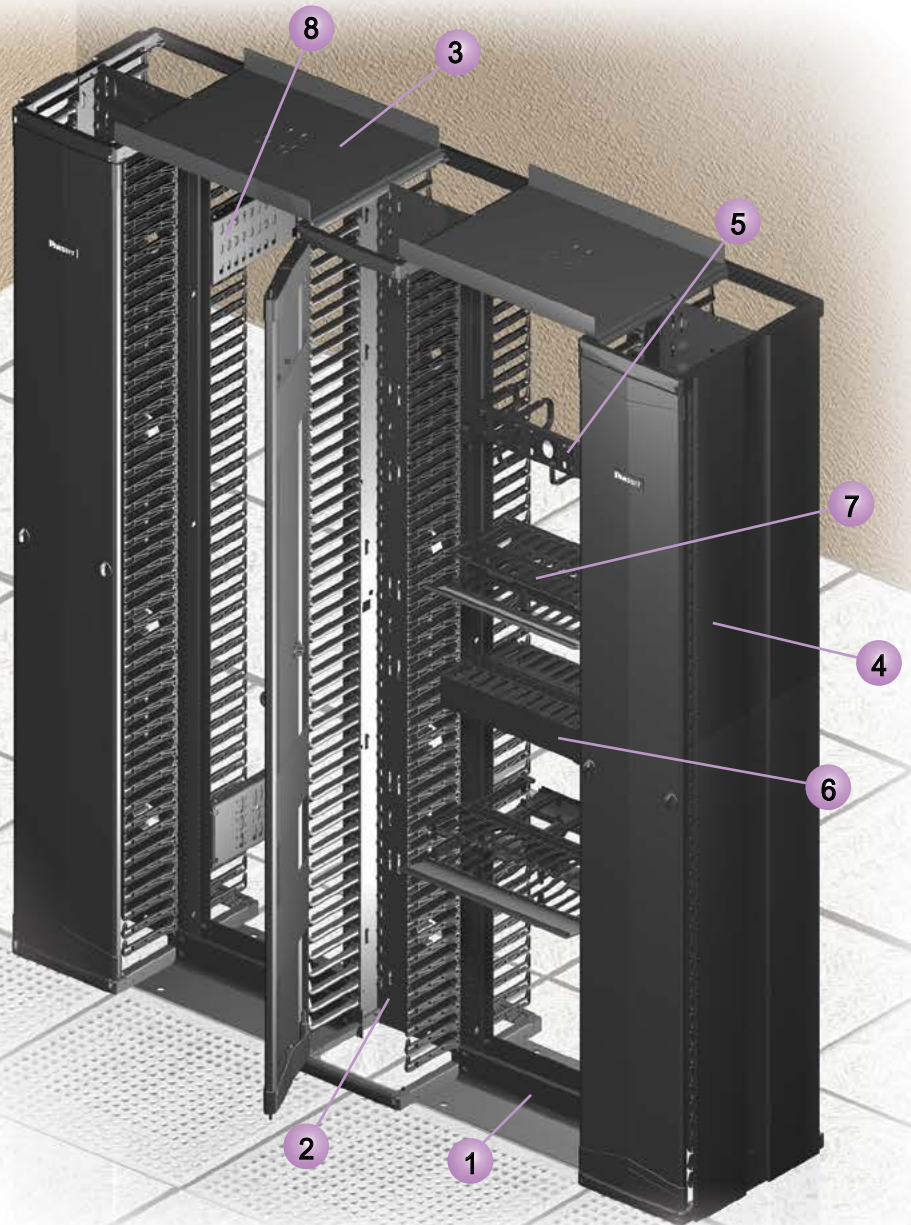
7 NM2

- 2 RU NetManager™ High Capacity Horizontal Cable Manager



8 R2PPDUB

- Power Distribution Unit (PDU) bracket for 2 and 4 post racks



PatchRunner™ 2 Vertical Cable Managers



- Large finger openings accommodate up to 48 Category 6A cables
- “Push-to-close” door design allows for easy operation

- Integral cable retainer on ends of each finger contain cables within each rack unit
- No assembly required; faster installation while reducing labor costs
- Doors ship with managers, simplifying ordering process with less packaging waste



PR2VD



PR2VFD



PR2VEP



PR2VBPK



R2PPR2VWF



R4PPR2VWF



PRSP7



WR5E-X

| Part Number | Part Description | No. of Rack Spaces‡ | Std. Pkg. Qty. |
|-------------|------------------|---------------------|----------------|
|-------------|------------------|---------------------|----------------|

High Capacity Dual Sided Vertical Managers with two doors

| | | | |
|---------|---|----|---|
| PR2VD06 | Dimensions: 83.9"H x 6.0"W x 20.7"D (2130mm x 152mm x 526mm) | 45 | 1 |
| PR2VD08 | Dimensions: 83.9"H x 8.0"W x 20.6"D (2130mm x 203mm x 523mm) | 45 | 1 |
| PR2VD10 | Dimensions: 83.9"H x 10.0"W x 20.6"D (2130mm x 254mm x 524mm) | 45 | 1 |
| PR2VD12 | Dimensions: 83.9"H x 12.0"W x 20.6"D (2130mm x 305mm x 523mm) | 45 | 1 |

High Capacity Single Sided Vertical Managers with one door

| | | | |
|----------|---|----|---|
| PR2VFD06 | Dimensions: 83.9"H x 6.0"W x 12.0"D (2130mm x 152mm x 305mm) | 45 | 1 |
| PR2VFD08 | Dimensions: 83.9"H x 8.0"W x 11.9"D (2130mm x 203mm x 303mm) | 45 | 1 |
| PR2VFD10 | Dimensions: 83.9"H x 10.0"W x 11.9"D (2130mm x 254mm x 303mm) | 45 | 1 |
| PR2VFD12 | Dimensions: 83.9"H x 12.0"W x 11.9"D (2130mm x 305mm x 303mm) | 45 | 1 |

Accessories

| | | | |
|-----------|--|----|----|
| PR2VBPK | Pass-through hole blanking plugs (kit of five plugs). | — | 5 |
| PR2VEP | End panel for use with PR2V series. | 45 | 1 |
| R4PPR2VWF | Rack top trough with waterfall for use with R4P 4-post racks and PR2V series managers. | — | 1 |
| R2PPR2VWF | Rack top trough with waterfall for use with R2P 2-post racks and PR2V series managers | — | 1 |
| PRSP7 | 7"D front slack management spool. | — | 1 |
| PRSP5 | 5"D rear slack management spool. | — | 1 |
| WR5E-X | Snap-on cable retainer. | — | 10 |

‡One rack space = 1.75" (44.45mm).

7ft managers and accessories are available in black or white. For white products, add "WH" to end of part number.

Example: PR2VD06WH.

All product color is black.

For PatchRunner™ 2 Vertical Cable Manager Specifications, see page 19.

Note: For 8ft products, add "96" to end of part number. Examples: PR2VD1296 and PR2VEP96

4 Post Cable Management Rack System

1 4 Post Rack

R4P36CN

Cage nut rails
84.0"H x 23.25"W x 36.0"D
45 rack spaces

R4P42CN

Cage nut rails
84.0"H x 23.25"W x 41.5"D
45 rack spaces



Deep 4 post open server racks provide the necessary environment for high density server applications. The open design assures maximum ventilation while minimizing air mixing in hot/cold aisle configurations. Space in the rear of the 4 post racks allows for server power, cable management and patching, providing an efficient and functional server solution.

2 R4PFP

- Vertical Blanking Panel



3 CVPDUB

- PDU
Mounting Brackets



4 CVPPB

- Vertical Patch Panel
Mounting Bracket



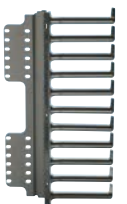
5 RCSTR

- Caster set



6 R4PFL

- Vertical finger section for
cable management



4 Post Rack System configured for server application.

4 Post Cable Management Rack System and Accessories



- Offered in 23", 30", 36" and 42" depths
- Offered in 84" and 96" heights
- Fully adjustable rails can be adjusted after rack is secured to floor

- Cage nut rails for server applications and tapped rails for switch applications
- 2,500 lbs. (1134 kg) load rating, UL Listed



R4P



R4PWF



RSHLF



CVPPB



CNSPE



CVPDUB



R4PFL

| Part Number | Part Description | No. of Rack Spaces‡ | Std. Pkg. Qty. |
|----------------------------------|--|---------------------|----------------|
| 4 Post Rack Threaded Rail | | | |
| R4P23* | Dimensions: 84.0"H x 23.25"W x 23.0"D (2134mm x 591mm x 584mm). | 45 | 1 |
| R4P* | Dimensions: 84.0"H x 23.25"W x 30.0"D (2134mm x 591mm x 762mm). | 45 | 1 |
| R4P36* | Dimensions: 84.0"H x 23.25"W x 36.0"D (2134mm x 591mm x 914mm). | 45 | 1 |
| R4P42* | Dimensions: 84.0"H x 23.25"W x 41.5"D (2134mm x 591mm x 1054mm). | 45 | 1 |
| 4 Post Rack Accessories | | | |
| R4PWF | Top trough with waterfall creates pathway above rack. Dimensions: 1.9"H x 26.1"W x 8.5"D (50mm x 662mm x 216mm). | — | 1 |
| RSHLF23 | 4 post rack mount shelf. Load rating 275 lbs.(124.7 kg). Dimensions: 1.7"H x 19.0"W x 23.0"D (44mm x 483mm x 584mm). | 1 | 1 |
| RSHLF | 4 post rack mount shelf. Load rating 275 lbs. (124.7 kg). Dimensions: 1.7"H x 19.0"W x 30.0"D (44mm x 483mm x 762mm). | 1 | 1 |
| RSHLF36 | 4 post rack mount shelf. Load rating 275 lbs. (124.7 kg). Dimensions: 1.7"H x 19.0"W x 36.0"D (44mm x 483mm x 914mm). | 1 | 1 |
| R4PFP | Adjustable vertical filler panel for Panduit 4 Post Racks blocks by-pass air and directs cold airflow through equipment when used. | 45 | 1 |
| RCSTR | 4 post rack casters. | — | 1 |
| CVPPB | Bracket to vertically mount 1 RU EIA 19" copper and fiber patch panels to the side of the Net-Access™ Cabinet posts or 4 post racks. | — | 1 |
| CNSPE | Net-Access™ Network Cabinet and 4 post rack end channel slack spools. Package includes one left and one right slack spool and mounting brackets. | — | 1 |
| CVPDUB | Bracket for vertical POU mounting to the side of the Net-Access™ Cabinet posts or 4 post racks (kit of two). | — | 1 |
| R4PFL | Left vertical finger section for cable management. | 11 | 1 |
| R4PFR | Right vertical finger section for cable management. | 11 | 1 |
| R4PFM | Finger managers for 7 and 8 foot Panduit 4 Post Racks. | 20 | 2 |

*For 7' 4 Post Rack Cage Nut Rail add suffix CN to the end of the part number, for example, R4P23CN.
 NOTE: For 8' 4 Post Rack Threaded Rail, add suffix 96 to the end of the part number, for example, R4P2396. For 8' 4 Post Rack Cage Nut, add suffix CN96 to the end of the part number, for example, R4P23CN96.

‡One rack space = 1.75" (44.45mm).

All product color is black.

7ft 30"D and 36"D 4-post racks are available in white. Add "WH" to end of part number. Examples: R4PWH and R4PCNWH.

2 Post Rack System

- Offered in 84" (2134mm) and 96" (2441mm) versions for both the three inch deep channel rack and six inch deep channel rack
- Rack space identification is printed numbers up allowing quick and easy equipment installation and identification
- Fully bonded structure

- 3" (76mm) deep channel, 1000 lb. (454 kg) load rating, UL listed
- 6" (152mm) deep channel, 1500 lb. (680 kg) load rating, UL listed
- Perforated rails for cable access and side-to-side airflow switches [6" (152mm) depth only]



R2P

R2P6S



R2PPEVWF



R2PPDUB

| Part Number | Part Description | No. of Rack Spaces‡ | Std. Pkg. Qty. |
|-------------|------------------|---------------------|----------------|
|-------------|------------------|---------------------|----------------|

3" Deep Channel Rack

| | | | |
|-------|---|----|---|
| R2P | 19" EIA rack, aluminum. Dimensions: 84.0"H x 20.3"W x 3.0"D (2134mm x 514mm x 76mm). | 45 | 1 |
| R2P96 | 19" EIA rack, aluminum. Dimensions: 96.0"H x 20.3"W x 3.0"D (2438mm x 514mm x 76mm). | 52 | 1 |
| R2PS | 19" EIA rack, steel. Dimensions: 84.0"H x 20.3"W x 3.0"D (2134mm x 514mm x 76mm). | 45 | 1 |
| R2PW | 23" EIA rack, aluminum. Dimensions: 84.0"H x 24.3"W x 3.0"D (2134mm x 616mm x 76mm). | 45 | 1 |
| R2P48 | 19" EIA rack, aluminum. Dimensions: 48.0"H x 20.3"W x 3.0"D (1219mm x 514mm x 76mm). | 24 | 1 |

6" Deep Channel Rack

| | | | |
|---------|---|----|---|
| R2P6S | 19" EIA rack, 6" channel, steel. Dimensions: 84.0"H x 20.3"W x 6"D (2134mm x 514mm x 152mm). | 45 | 1 |
| R2P6S96 | 19" EIA rack, 6" channel, steel. Dimensions: 96.0"H x 20.3"W x 6"D (2438mm x 514mm x 152mm). | 52 | 1 |

Accessories

| | | | |
|-----------|--|---|-----|
| RFAKIT | Rack anchor kit for concrete floor (set of four). | — | 1 |
| R2PPDUB | Power Distribution Unit (PDU) bracket for 2 and 4 post racks (set of two). | — | 1 |
| R2PPEVWF | Waterfall Trough for 2 Post Rack and PatchRunner™ High Capacity Vertical Cable Managers. | — | 1 |
| R2PPR2VWF | Waterfall Trough for 2 Post Rack and PatchRunner™ 2 Vertical Cable Managers. | — | 1 |
| S1224-C | #12-24 x .5" mounting screws. | — | 100 |

‡One rack space = 1.75" (44.45mm).

All product color is black.

7ft 2-post rack is available in white. PN: R2PWH.



NetManager™ High Capacity Horizontal Cable Managers

- Innovative inset fingers slope inward toward back of managers offering unobstructed access to network cabling for easier moves, adds, and changes
- Large front finger openings easily accommodate Category 6A and Category 6 cables, speeding installation and reducing maintenance costs
- Rear cable management finger spacing utilizes open D-rings for greater accessibility
- Can be used to create large capacity horizontal pathways for routing cable
- Front and rear dual hinged cover allows cable access without removing cover
- Built in cable retainers hold cable in place for easy moves, adds, and changes



NM2



NMF2



NMF3



NMF4

| Part Number | Part Description | No. of Rack Spaces‡ | Std Pkg Qty. |
|------------------------------------|--|---------------------|--------------|
| 19" Manager, Front and Rear | | | |
| NM1 | 1.7"H x 19.0"W x 13.1"D (44mm x 482mm x 332mm). | 1 | 1 |
| NM2 | 3.5"H x 19.0"W x 13.1"D (88mm x 482mm x 332mm). | 2 | 1 |
| NM3 | 5.2"H x 19.0"W x 13.1"D (133mm x 482mm x 332mm). | 3 | 1 |
| NM4 | 7.0"H x 19.0"W x 13.1"D (177mm x 482mm x 332mm). | 4 | 1 |

19" Manager, Front Only

| | | | |
|-------|---|---|---|
| NMF1* | 1.7"H x 19.0"W x 6.2"D (44mm x 482mm x 157mm). | 1 | 1 |
| NMF2* | 3.5"H x 19.0"W x 6.2"D (88mm x 482mm x 157mm). | 2 | 1 |
| NMF3* | 5.2"H x 19.0"W x 6.2"D (133mm x 482mm x 157mm). | 3 | 1 |
| NMF4* | 7.0"H x 19.0"W x 6.2"D (177mm x 482mm x 157mm). | 4 | 1 |

| Part Number | Part Description | Std Pkg Qty. |
|-------------|------------------|--------------|
|-------------|------------------|--------------|

Accessories

| | | |
|------|--|---|
| NM1B | Front to rear pass through blanking panel for NetManager™ High Capacity Horizontal Cable Managers, NM1 and NMF1. | 1 |
| NM2B | Front to rear pass through blanking panel for NetManager™ High Capacity Horizontal Cable Managers, NM2 and NMF2. | 1 |
| NM3B | Front to rear pass through blanking panel for NetManager™ High Capacity Horizontal Cable Managers, NM3 and NMF3. | 1 |
| NM4B | Front to rear pass through blanking panel for NetManager™ High Capacity Horizontal Cable Managers, NM4 and NMF4. | 1 |

*Also available in white. Add "WH" to end of part number.

‡One rack space = 1.75" (44.45mm).

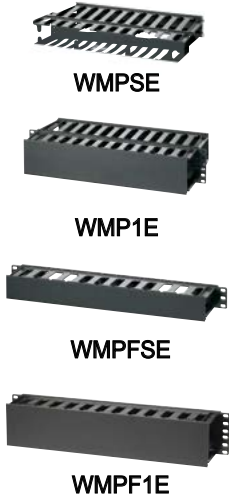
All product color is black.

Horizontal Cable Management Systems

PatchLink™ Horizontal Cable Managers

- Dual-hinged cover allows cable access without removing cover
- Rounded edges on fingers protect cables from snags and damage to cable

- Flexible fingers allow easy installation and removal of cables
- Pass-through holes allow front to rear cabling
- Covers and #12-24 mounting screws included
- Bulk package options minimize packaging on-site



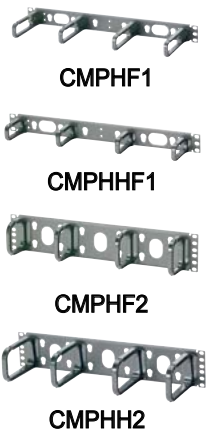
| Part Number | Part Description | No. of Rack Spaces‡ | Std Pkg Qty. |
|------------------------------------|--|---------------------|--------------|
| 19" Manager, Front and Rear | | | |
| WMPSE | 1.7"H x 19.0"W x 8.9"D (44mm x 483mm x 226mm). | 1 | 1 |
| WMP1E | 3.5"H x 19.0"W x 8.9"D (89mm x 483mm x 226mm). | 2 | 1 |
| 19" Manager, Front Only | | | |
| WMPFSE | 1.7"H x 19.0"W x 3.7"D (44mm x 483mm x 94mm). | 1 | 1 |
| WMPF1E | 3.5"H x 19.0"W x 3.7"D (89mm x 483mm x 94mm). | 2 | 1 |

‡One rack space = 1.75" (44.45mm).
All product color is black.

Open-Access™ Horizontal Cable Managers

- D-ring managers provide an open and efficient way to manage power, coaxial, and communications cables
- Optional snap-on cover

- Optional front and rear managers
- Pass-through holes allow front to rear cabling
- Hardware included



| Part Number | Part Description | No. of Rack Spaces‡ | Std Pkg Qty. |
|------------------------------------|--|---------------------|--------------|
| 19" Manager, Front and Rear | | | |
| CMPHF1 | 1.7"H x 19.0"W x 8.6"D (44mm x 483mm x 218mm). | 1 | 1 |
| CMPHF2 | 3.5"H x 19.0"W x 8.6"D (88mm x 483mm x 218mm). | 2 | 1 |
| 19" Manager, Front Only | | | |
| CMPHF1 | 1.7"H x 19.0"W x 3.4"D (44mm x 483mm x 87mm). | 1 | 1 |
| CMPHF2 | 3.5"H x 19.0"W x 3.4"D (88mm x 483mm x 87mm). | 2 | 1 |
| CMPHH1 | 1.7"H x 19.0"W x 5.7"D (44mm x 483mm x 144mm). | 1 | 1 |
| CMPHH2 | 3.5"H x 19.0"W x 5.7"D (88mm x 483mm x 144mm). | 2 | 1 |

‡One rack space = 1.75" (44.45mm).
All product color is black.



Rack Mount Shelves for 2 Post Racks

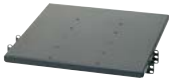
- Load ratings up to 250 lbs.; refer to part descriptions for specific load ratings



SRM19FM2



SRM19CMV3



SRM19X18A1

| Part Number | Part Description | No. of Rack Spaces‡ | Std. Pkg. Qty. |
|-------------|--|---------------------|----------------|
| SRM19FM1 | 19" front mount shelf, steel. Dimensions: 1.7"H x 19.0"W x 15.2"D (44mm x 483mm x 385mm). Load rating 30 lbs. (13.6 kg). | 1 | 1 |
| SRM19FM2 | 19" front mount shelf, steel. Dimensions: 3.5"H x 19.0"W x 15.2"D (88mm x 483mm x 385mm). Load rating 50 lbs. (22.7 kg). | 2 | 1 |
| SRM19CMV3 | 19" cantilevered shelf, vented aluminum. Includes two-piece shelf that mounts to front and back of EIA racks. Dimensions: 5.2"H x 19.2"W x 12.5"D (133mm x 489mm x 316mm). Load rating 200 lbs. (90.9 kg). | 3 | 1 |
| SRM19CM3 | 19" cantilevered shelf, aluminum. Includes two-piece shelf that mounts to front and back of EIA racks. Dimensions: 5.2"H x 19.2"W x 12.5"D (133mm x 489mm x 316mm). Load rating 200 lbs. (90.9 kg). | 3 | 1 |
| SRM19X18A1 | 19" adjustable mount shelf, steel, mounts to front and back of EIA racks. Dimensions: 1.8"H x 19.0"W x 18.0"D (44mm x 483mm x 457mm). Load rating 250 lbs. (113.6 kg). | 1 | 1 |
| SRM19X25A1 | 19" adjustable mount shelf, steel, mounts to front and back of EIA racks. Dimensions: 1.8"H x 19.0"W x 25.0"D (44mm x 483mm x 635mm). Load rating 250 lbs. (113.6 kg). | 1 | 1 |

‡One rack space = 1.75" (44.45mm).
All product color is black.

Tool-Less Blanking Panels

- Minimize bypass airflow in racks and cabinets while providing an aesthetic appearance



TLBP1



TLBP2

| Part Number | Part Description | No. of Rack Spaces‡ | Std. Pkg. Qty. |
|-------------|--|---------------------|----------------|
| TLBP1S-V | 19" (483mm) width for 3/8" cage nut holes. | 1 | 5 |
| TLBP2S-V | 19" (483mm) width for 3/8" cage nut holes. | 2 | 5 |
| TLBP1R-V | 19" (483mm) width for tapped rails. | 1 | 5 |
| TLBP2R-V | 19" (483mm) width for tapped rails. | 2 | 5 |

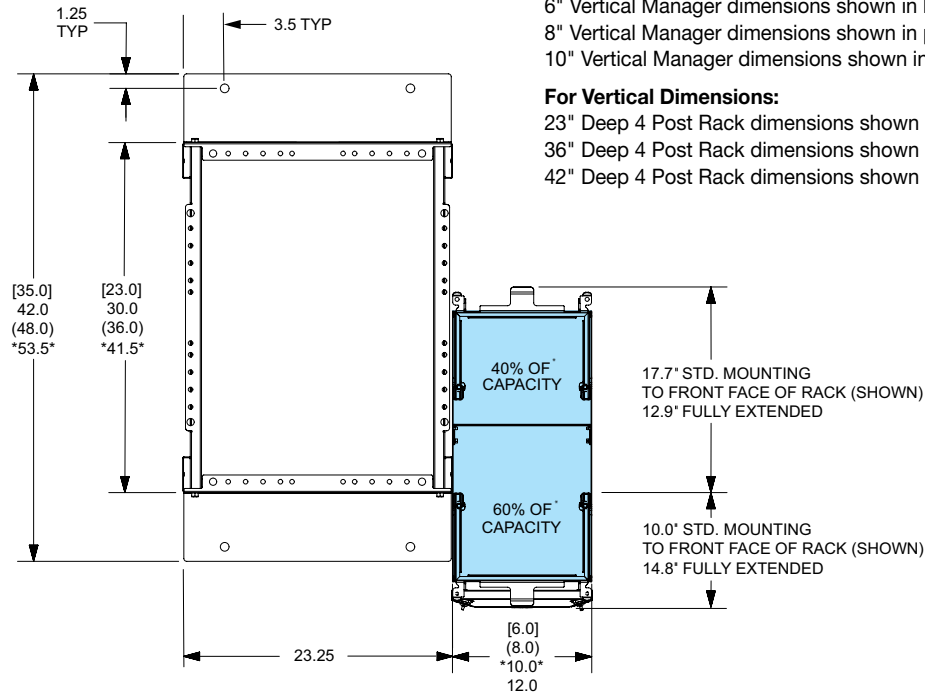
‡One rack space = 1.75" (44.45mm).
All product color is black.

PatchRunner™ High Capacity Vertical Cable Manager

Specifications

- Dual-sided cable managers, having 60% of total cable capacity on one side and 40% on the other, allow optimized capacity placement on either side of the rack
- Cable managers have multiple mounting locations to the side of the rack, allowing optimal cable routing and space utilization
- When using a dual-sided cable manager in an inter-connect network architecture, the 60% side of the cable manager can be orientated towards the patching side of the rack to manage a higher number of patch cords
- When using a dual-sided cable manager in a cross-connect network architecture, the 60% side of the cable manager can be orientated towards the cabling side of the rack to manage a higher number of cables

4 Post Rack



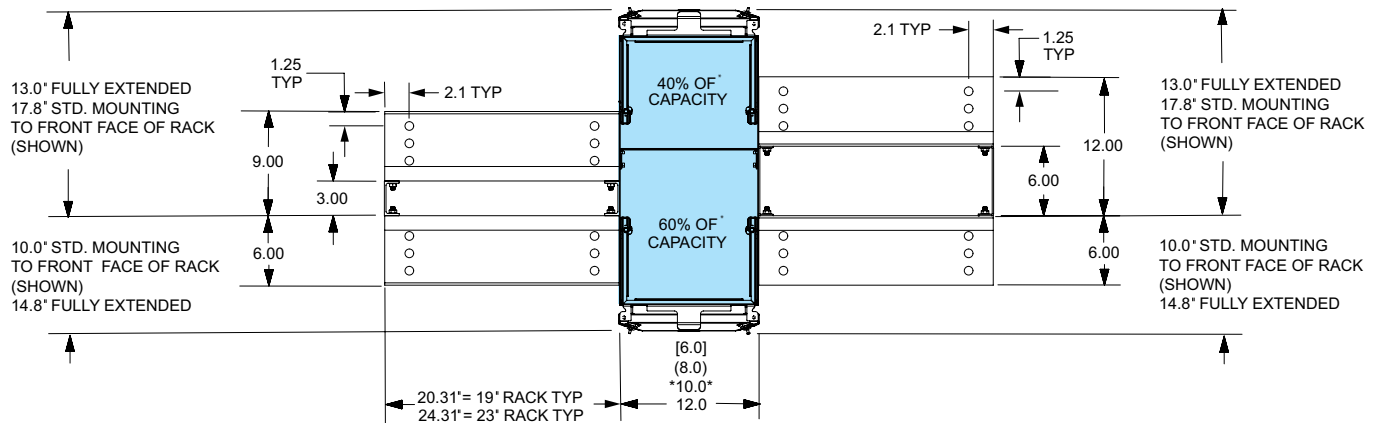
For Horizontal Dimensions:

- 6" Vertical Manager dimensions shown in brackets [...]
- 8" Vertical Manager dimensions shown in parenthesis (...)
- 10" Vertical Manager dimensions shown in Asterisk*...*

For Vertical Dimensions:

- 23" Deep 4 Post Rack dimensions shown in brackets [...]
- 36" Deep 4 Post Rack dimensions shown in parenthesis (...)
- 42" Deep 4 Post Rack dimensions shown in Asterisk*...*

2 Post Rack



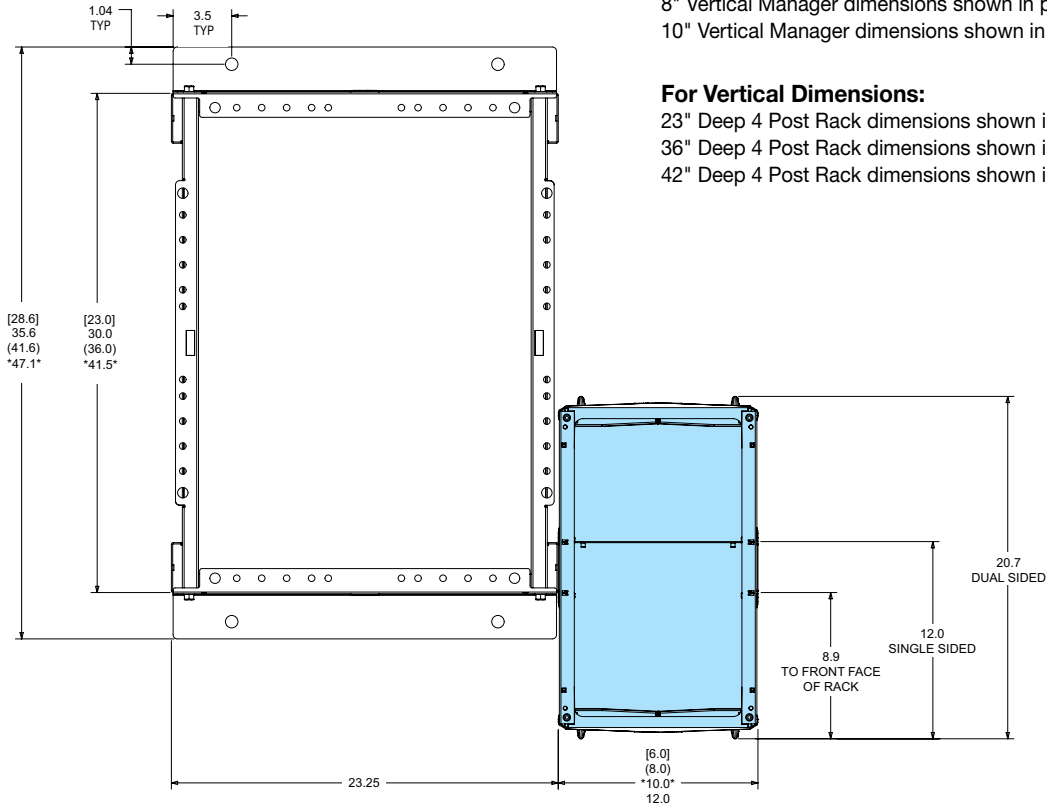
PatchRunner™ 2 Vertical Cable Manager



Specifications

- PatchRunner™ 2 Vertical Cable Managers are specifically designed for cable capacities typically found in telecommunication rooms using medium to large enterprise switches
- Dual-sided cable managers, having 60% of total cable capacity on one side and 40% on the other, allow optimized capacity placement on either side of the rack

4 Post Rack



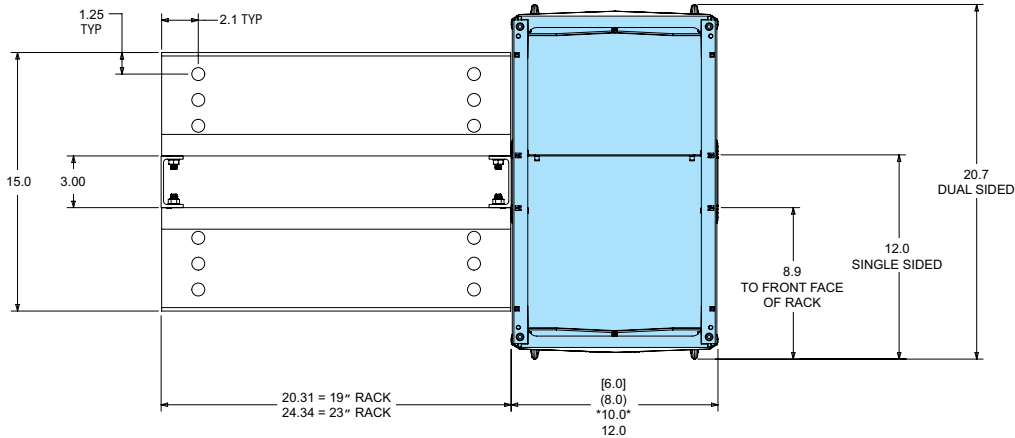
For Horizontal Dimensions:

- 6" Vertical Manager dimensions shown in brackets [...]
- 8" Vertical Manager dimensions shown in parenthesis (...)
- 10" Vertical Manager dimensions shown in Asterisk*...*

For Vertical Dimensions:

- 23" Deep 4 Post Rack dimensions shown in brackets [...]
- 36" Deep 4 Post Rack dimensions shown in parenthesis (...)
- 42" Deep 4 Post Rack dimensions shown in asterisk*...*

2 Post Rack



Cable Capacity Charts (inches)

| Product Family | Part Number | Description | Recommended Cable Fill (30%) | | | | | | | | Maximum Cable Fill (50%) | | | | | | | |
|---|-------------------|----------------------|------------------------------|------|---------------------------|------|--------------------------|------|--------------------------|------|---------------------------|------|---------------------------|-----|--------------------------|------|--------------------------|------|
| | | | Front Side | | | | | | | | Rear Side | | | | | | | |
| | | | Cat. 6A (28 AWG - 0.185") | | Cat. 6A (24 AWG - 0.275") | | Cat. 6 (28 AWG - 0.150") | | Cat. 6 (24 AWG - 0.235") | | Cat. 6A (28 AWG - 0.185") | | Cat. 6A (24 AWG - 0.275") | | Cat. 6 (28 AWG - 0.150") | | Cat. 6 (24 AWG - 0.235") | |
| PR2V PatchRunner™ 2 Vertical Cable Managers | PR2VD06 | 6" wide | 503 | 839 | 227 | 379 | 765 | 1276 | 312 | 520 | 304 | 507 | 137 | 229 | 462 | 771 | 188 | 314 |
| | PR2VFD06 | 6" wide, front only | 503 | 839 | 227 | 379 | 765 | 1276 | 312 | 520 | 0 | 0 | 0 | 0 | 0 | 0 | 0 | 0 |
| | PR2VD08 | 8" wide | 711 | 1185 | 321 | 536 | 1081 | 1802 | 440 | 734 | 443 | 739 | 200 | 334 | 674 | 1124 | 274 | 457 |
| | PR2VFD08 | 8" wide, front only | 711 | 1185 | 321 | 536 | 1081 | 1802 | 440 | 734 | 0 | 0 | 0 | 0 | 0 | 0 | 0 | 0 |
| | PR2VD10 | 10" wide | 918 | 1531 | 415 | 692 | 1397 | 2328 | 569 | 948 | 582 | 971 | 263 | 439 | 886 | 1477 | 361 | 601 |
| | PR2VFD10 | 10" wide, front only | 918 | 1531 | 415 | 692 | 1397 | 2328 | 569 | 948 | 0 | 0 | 0 | 0 | 0 | 0 | 0 | 0 |
| | PR2VD12 | 12" wide | 1126 | 1876 | 509 | 849 | 1712 | 2854 | 697 | 1163 | 721 | 1203 | 326 | 544 | 1098 | 1830 | 447 | 745 |
| | PR2VFD12 | 12" wide, front only | 1126 | 1876 | 509 | 849 | 1712 | 2854 | 697 | 1163 | 0 | 0 | 0 | 0 | 0 | 0 | 0 | 0 |
| | Single PRV Finger | | | | | | | | | | | | | | | | | |
| PEV PatchRunner™ High Capacity Vertical Cable Managers | PEV6 | 6" wide | 748 | 1248 | 338 | 564 | 1139 | 1898 | 464 | 773 | 512 | 853 | 231 | 386 | 779 | 1298 | 317 | 529 |
| | PEVF6 | 6" wide, front only | 748 | 1248 | 338 | 564 | 1139 | 1898 | 464 | 773 | 0 | 0 | 0 | 0 | 0 | 0 | 0 | 0 |
| | PEV8 | 8" wide | 1035 | 1726 | 468 | 781 | 1575 | 2625 | 641 | 1069 | 717 | 1196 | 324 | 541 | 1091 | 1819 | 444 | 741 |
| | PEVF8 | 8" wide, front only | 1035 | 1726 | 468 | 781 | 1575 | 2625 | 641 | 1069 | 0 | 0 | 0 | 0 | 0 | 0 | 0 | 0 |
| | PEV10 | 10" wide | 1323 | 2206 | 599 | 998 | 2013 | 3355 | 820 | 1367 | 921 | 1536 | 417 | 695 | 1402 | 2337 | 571 | 952 |
| | PEVF10 | 10" wide, front only | 1323 | 2206 | 599 | 998 | 2013 | 3355 | 820 | 1367 | 0 | 0 | 0 | 0 | 0 | 0 | 0 | 0 |
| | PEV12 | 12" wide | 1611 | 2685 | 729 | 1215 | 2451 | 4085 | 998 | 1664 | 1127 | 1878 | 510 | 850 | 1714 | 2857 | 698 | 1164 |
| | PEVF12 | 12" wide, front only | 1611 | 2685 | 729 | 1215 | 2451 | 4085 | 998 | 1664 | 0 | 0 | 0 | 0 | 0 | 0 | 0 | 0 |
| | Single PEV Finger | | | | | | | | | | | | | | | | | |

Note: Door brackets and cable slack spools reduce cable capacity.

| | | | | | | | | | | | | | | | | | | |
|---|--------|-----------------|----|-----|----|----|-----|-----|----|----|-----|-----|----|----|-----|-----|----|-----|
| WMP PatchLink™ Horizontal Cable Managers | WMP1E | 2RU, front/rear | 84 | 141 | 38 | 63 | 129 | 215 | 52 | 87 | 118 | 197 | 53 | 89 | 179 | 299 | 73 | 122 |
| | WMPF1E | 2RU, front only | 84 | 141 | 38 | 63 | 129 | 215 | 52 | 87 | 0 | 0 | 0 | 0 | 0 | 0 | 0 | 0 |
| | WMPSE | 1RU, front/rear | 39 | 65 | 17 | 29 | 59 | 99 | 24 | 40 | 70 | 117 | 31 | 53 | 106 | 178 | 43 | 72 |
| | WMPFSE | 1RU, front only | 39 | 65 | 17 | 29 | 59 | 99 | 24 | 40 | 0 | 0 | 0 | 0 | 0 | 0 | 0 | 0 |

Note: Rear section may be partially blocked by rack posts.

| | | | | | | | | | | | | | | | | | | |
|---|------|-----------------|-----|-----|-----|-----|-----|-----|-----|-----|-----|-----|-----|-----|-----|-----|-----|-----|
| NM NetManager™ High Capacity Horizontal Cable Managers | NM1 | 1RU, front/rear | 36 | 61 | 16 | 27 | 56 | 93 | 22 | 38 | 45 | 76 | 20 | 34 | 69 | 116 | 28 | 47 |
| | NMF1 | 1RU, front only | 36 | 61 | 16 | 27 | 56 | 93 | 22 | 38 | 0 | 0 | 0 | 0 | 0 | 0 | 0 | 0 |
| | NM2 | 2RU, front/rear | 109 | 182 | 49 | 82 | 166 | 277 | 67 | 112 | 123 | 206 | 56 | 93 | 188 | 314 | 76 | 127 |
| | NMF2 | 2RU, front only | 109 | 182 | 49 | 82 | 166 | 277 | 67 | 112 | 0 | 0 | 0 | 0 | 0 | 0 | 0 | 0 |
| | NM3 | 3RU, front/rear | 193 | 321 | 87 | 145 | 293 | 489 | 119 | 199 | 245 | 409 | 111 | 185 | 373 | 622 | 152 | 253 |
| | NMF3 | 3RU, front only | 193 | 321 | 87 | 145 | 293 | 489 | 119 | 199 | 0 | 0 | 0 | 0 | 0 | 0 | 0 | 0 |
| | NM4 | 4RU, front/rear | 271 | 452 | 122 | 204 | 412 | 687 | 168 | 280 | 356 | 593 | 161 | 268 | 541 | 902 | 220 | 367 |
| | NMF4 | 4RU, front only | 271 | 452 | 122 | 204 | 412 | 687 | 168 | 280 | 0 | 0 | 0 | 0 | 0 | 0 | 0 | 0 |

Note: Rear section may be partially blocked by rack posts.

| | | | | | | | | | | | | | | | | | | |
|--|---------|---------------------------------|-----|-----|----|----|-----|-----|----|-----|-----|-----|----|----|-----|-----|----|-----|
| CMPH Open-Access™ Horizontal Cable Managers | CMPH1 | 1RU, front/rear | 25 | 42 | 11 | 19 | 39 | 65 | 15 | 26 | 32 | 53 | 14 | 24 | 49 | 82 | 20 | 33 |
| | CMPHF1 | 1RU, front only | 25 | 42 | 11 | 19 | 39 | 65 | 15 | 26 | 0 | 0 | 0 | 0 | 0 | 0 | 0 | 0 |
| | CMPH2 | 2RU, front/rear | 59 | 98 | 26 | 44 | 89 | 149 | 36 | 61 | 120 | 200 | 54 | 90 | 183 | 305 | 74 | 124 |
| | CMPHF2 | 2RU, front only | 59 | 98 | 26 | 44 | 89 | 149 | 36 | 61 | 0 | 0 | 0 | 0 | 0 | 0 | 0 | 0 |
| | CMPHH2 | 2RU, front only, larger D-rings | 120 | 200 | 54 | 90 | 183 | 305 | 74 | 124 | 0 | 0 | 0 | 0 | 0 | 0 | 0 | 0 |
| | CMPHHF1 | 1RU, front only, larger D-rings | 32 | 53 | 14 | 24 | 49 | 82 | 20 | 33 | 0 | 0 | 0 | 0 | 0 | 0 | 0 | 0 |

Note: Rear section may be partially blocked by rack posts.

Cable Capacity Charts (metric)



| Product Family | Part Number | Description | Recommended Cable Fill (30%) | | | | | | | | Maximum Cable Fill (50%) | | | | | | | |
|---|-------------------|------------------------|------------------------------|------|---------------------------|------|--------------------------|------|--------------------------|------|---------------------------|------|---------------------------|-----|--------------------------|------|--------------------------|------|
| | | | Front Side | | | | | | | | Rear Side | | | | | | | |
| | | | Cat. 6A (28 AWG - 4,70mm) | | Cat. 6A (24 AWG - 6,99mm) | | Cat. 6 (28 AWG - 3,81mm) | | Cat. 6 (24 AWG - 5,97mm) | | Cat. 6A (28 AWG - 4,70mm) | | Cat. 6A (24 AWG - 6,99mm) | | Cat. 6 (28 AWG - 3,81mm) | | Cat. 6 (24 AWG - 5,97mm) | |
| PR2V PatchRunner™ 2 Vertical Cable Managers | PR2VD06 | 152mm wide | 503 | 839 | 227 | 379 | 765 | 1276 | 312 | 520 | 304 | 507 | 137 | 229 | 462 | 771 | 188 | 314 |
| | PR2VFD06 | 152mm wide, front only | 503 | 839 | 227 | 379 | 765 | 1276 | 312 | 520 | 0 | 0 | 0 | 0 | 0 | 0 | 0 | 0 |
| | PR2VD08 | 203mm wide | 711 | 1185 | 321 | 536 | 1081 | 1802 | 440 | 734 | 443 | 739 | 200 | 334 | 674 | 1124 | 274 | 457 |
| | PR2VFD08 | 203mm wide, front only | 711 | 1185 | 321 | 536 | 1081 | 1802 | 440 | 734 | 0 | 0 | 0 | 0 | 0 | 0 | 0 | 0 |
| | PR2VD10 | 254mm wide | 918 | 1531 | 415 | 692 | 1397 | 2328 | 569 | 948 | 582 | 971 | 263 | 439 | 886 | 1477 | 361 | 601 |
| | PR2VFD10 | 254mm wide, front only | 918 | 1531 | 415 | 692 | 1397 | 2328 | 569 | 948 | 0 | 0 | 0 | 0 | 0 | 0 | 0 | 0 |
| | PR2VD12 | 305mm wide | 1126 | 1876 | 509 | 849 | 1712 | 2854 | 697 | 1163 | 721 | 1203 | 326 | 544 | 1098 | 1830 | 447 | 745 |
| | PR2VFD12 | 305mm wide, front only | 1126 | 1876 | 509 | 849 | 1712 | 2854 | 697 | 1163 | 0 | 0 | 0 | 0 | 0 | 0 | 0 | 0 |
| | Single PRV Finger | | | | | | | | | | | | | | | | | |
| PEV PatchRunner™ High Capacity Vertical Cable Managers | PEV6 | 152mm wide | 748 | 1248 | 338 | 564 | 1139 | 1898 | 464 | 773 | 512 | 853 | 231 | 386 | 779 | 1298 | 317 | 529 |
| | PEVF6 | 152mm wide, front only | 748 | 1248 | 338 | 564 | 1139 | 1898 | 464 | 773 | 0 | 0 | 0 | 0 | 0 | 0 | 0 | 0 |
| | PEV8 | 203mm wide | 1035 | 1726 | 468 | 781 | 1575 | 2625 | 641 | 1069 | 717 | 1196 | 324 | 541 | 1091 | 1819 | 444 | 741 |
| | PEVF8 | 203mm wide, front only | 1035 | 1726 | 468 | 781 | 1575 | 2625 | 641 | 1069 | 0 | 0 | 0 | 0 | 0 | 0 | 0 | 0 |
| | PEV10 | 254mm wide | 1323 | 2206 | 599 | 998 | 2013 | 3355 | 820 | 1367 | 921 | 1536 | 417 | 695 | 1402 | 2337 | 571 | 952 |
| | PEVF10 | 254mm wide, front only | 1323 | 2206 | 599 | 998 | 2013 | 3355 | 820 | 1367 | 0 | 0 | 0 | 0 | 0 | 0 | 0 | 0 |
| | PEV12 | 305mm wide | 1611 | 2685 | 729 | 1215 | 2451 | 4085 | 998 | 1664 | 1127 | 1878 | 510 | 850 | 1714 | 2857 | 698 | 1164 |
| | PEVF12 | 305mm wide, front only | 1611 | 2685 | 729 | 1215 | 2451 | 4085 | 998 | 1664 | 0 | 0 | 0 | 0 | 0 | 0 | 0 | 0 |
| | Single PEV Finger | | | | | | | | | | | | | | | | | |

Note: Door brackets and cable slack spools reduce cable capacity.

| | | | | | | | | | | | | | | | | | | |
|---|--------|-----------------|----|-----|----|----|-----|-----|----|----|-----|-----|----|----|-----|-----|----|-----|
| WMP PatchLink™ Horizontal Cable Managers | WMP1E | 2RU, front/rear | 84 | 141 | 38 | 63 | 129 | 215 | 52 | 87 | 118 | 197 | 53 | 89 | 179 | 299 | 73 | 122 |
| | WMPF1E | 2RU, front only | 84 | 141 | 38 | 63 | 129 | 215 | 52 | 87 | 0 | 0 | 0 | 0 | 0 | 0 | 0 | 0 |
| | WMPSE | 1RU, front/rear | 39 | 65 | 17 | 29 | 59 | 99 | 24 | 40 | 70 | 117 | 31 | 53 | 106 | 178 | 43 | 72 |
| | WMPFSE | 1RU, front only | 39 | 65 | 17 | 29 | 59 | 99 | 24 | 40 | 0 | 0 | 0 | 0 | 0 | 0 | 0 | 0 |

Note: Rear section may be partially blocked by rack posts.

| | | | | | | | | | | | | | | | | | | |
|---|------|-----------------|-----|-----|-----|-----|-----|-----|-----|-----|-----|-----|-----|-----|-----|-----|-----|-----|
| NM NetManager™ High Capacity Horizontal Cable Managers | NM1 | 1RU, front/rear | 36 | 61 | 16 | 27 | 56 | 93 | 22 | 38 | 45 | 76 | 20 | 34 | 69 | 116 | 28 | 47 |
| | NMF1 | 1RU, front only | 36 | 61 | 16 | 27 | 56 | 93 | 22 | 38 | 0 | 0 | 0 | 0 | 0 | 0 | 0 | 0 |
| | NM2 | 2RU, front/rear | 109 | 182 | 49 | 82 | 166 | 277 | 67 | 112 | 123 | 206 | 56 | 93 | 188 | 314 | 76 | 127 |
| | NMF2 | 2RU, front only | 109 | 182 | 49 | 82 | 166 | 277 | 67 | 112 | 0 | 0 | 0 | 0 | 0 | 0 | 0 | 0 |
| | NM3 | 3RU, front/rear | 193 | 321 | 87 | 145 | 293 | 489 | 119 | 199 | 245 | 409 | 111 | 185 | 373 | 622 | 152 | 253 |
| | NMF3 | 3RU, front only | 193 | 321 | 87 | 145 | 293 | 489 | 119 | 199 | 0 | 0 | 0 | 0 | 0 | 0 | 0 | 0 |
| | NM4 | 4RU, front/rear | 271 | 452 | 122 | 204 | 412 | 687 | 168 | 280 | 356 | 593 | 161 | 268 | 541 | 902 | 220 | 367 |
| | NMF4 | 4RU, front only | 271 | 452 | 122 | 204 | 412 | 687 | 168 | 280 | 0 | 0 | 0 | 0 | 0 | 0 | 0 | 0 |

Note: Rear section may be partially blocked by rack posts.

| | | | | | | | | | | | | | | | | | | |
|--|---------|---------------------------------|-----|-----|----|----|-----|-----|----|-----|-----|-----|----|----|-----|-----|----|-----|
| CMPH Open-Access™ Horizontal Cable Managers | CMPH1 | 1RU, front/rear | 25 | 42 | 11 | 19 | 39 | 65 | 15 | 26 | 32 | 53 | 14 | 24 | 49 | 82 | 20 | 33 |
| | CMPHF1 | 1RU, front only | 25 | 42 | 11 | 19 | 39 | 65 | 15 | 26 | 0 | 0 | 0 | 0 | 0 | 0 | 0 | 0 |
| | CMPH2 | 2RU, front/rear | 59 | 98 | 26 | 44 | 89 | 149 | 36 | 61 | 120 | 200 | 54 | 90 | 183 | 305 | 74 | 124 |
| | CMPHF2 | 2RU, front only | 59 | 98 | 26 | 44 | 89 | 149 | 36 | 61 | 0 | 0 | 0 | 0 | 0 | 0 | 0 | 0 |
| | CMPHH2 | 2RU, front only, larger D-rings | 120 | 200 | 54 | 90 | 183 | 305 | 74 | 124 | 0 | 0 | 0 | 0 | 0 | 0 | 0 | 0 |
| | CMPHHF1 | 1RU, front only, larger D-rings | 32 | 53 | 14 | 24 | 49 | 82 | 20 | 33 | 0 | 0 | 0 | 0 | 0 | 0 | 0 | 0 |

Note: Rear section may be partially blocked by rack posts.

A network diagram background consisting of a complex web of interconnected nodes and lines, rendered in a light gray color against a white background. The nodes are represented by small circles, and the lines represent connections between them, creating a dense, interconnected structure.

PANDUIT®

**Panduit Corp.
World Headquarters
Tinley Park, IL 60487**

**cs@panduit.com
US and Canada: 800.777.3300
Europe, Middle East, and Africa:
44.20.8601.7200
Latin America: 52.33.3777.6000
Asia Pacific: 65.6305.7575**

www.panduit.com