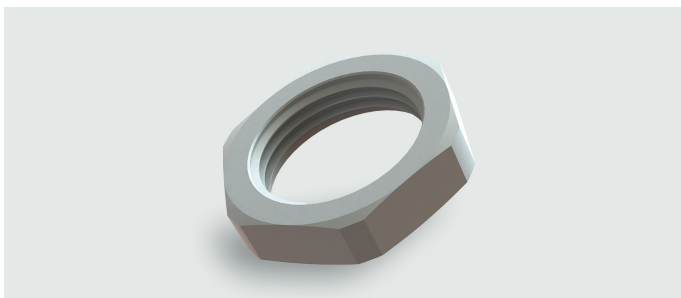


Technical data sheet

Cable fittings and accessories



Identification

Type	TOP-T Locknuts Plastic M16×1.5
Part No.	LPM16G

Product version

Datasheet version	00
-------------------	----

Use/Application/Properties

Properties	<ul style="list-style-type: none">Hexagonal locknut for secure tightening of plastic cable, fittings and accessories, Easy to install
------------	---

Technical data

Temperature range	-20 °C ... +100 °C -4 °F ... +212 °F
max. short-time temperature up to	+150 °C / +300 °F
Outer Ø	24.2 mm
Thread form	metric
Thread G	M 16×1.5
SW	22 mm
H	5 mm

Construction

Material	PA 6 GF 30
Color	grey RAL 7001

Notes and Comments

Note	Flange is imprinted with locknut size for easy identification.
------	--

USA: LUTZE INC.

13330 South Ridge Drive • Charlotte, NC 28273, USA
Tel. +1 (704) 504-0222 • Fax +1 (704) 504-0223
www.lutze.com • info@lutze.com

14.06.2021 • Subject to technical modification
Part No. LPM16G • Datasheet version: 00

Technical data sheet

Cable fittings and accessories

Dimensions

