

Switched and Interlocked Receptacles

Product information

Enhanced
safety.
Fusible or
non-fusible.



Switched and Interlocked Receptacles

Product information

MENNEKES® Switched and Interlocked Receptacles.

Switched and Interlocked Receptacles provide safety and durability in one pre-wired unit. Patented interlock mechanism prohibits the switch from being turned "ON" unless the plug is fully inserted. The plug cannot be removed unless the switch is turned "OFF".

DIN rail and screw mounting of components facilitates maintenance.

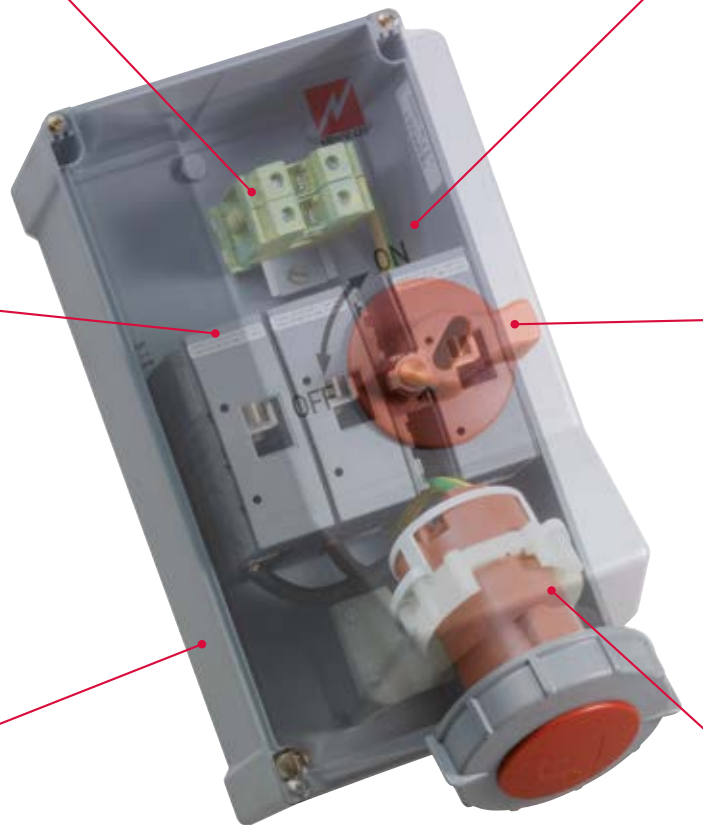
Generous wiring space allows for convenient access to field terminals.

Heavy-duty HP Rated switch factory wired to receptacle. Oversized terminals help ease installation.

High visibility, pad-lockable handle actuates switch and receptacle interlock mechanism to assure "no-load" make and break of plug connected equipment.

NEMA 4X Valox enclosure; impact modified and chemical-resistant. Features poured-in-place gasketing and molded conduit drillpoints in top, bottom and rear wall.

Thermoplastic receptacle available in 20A, 30A, 60A and 100A IEC 60309 configurations. Compatible with like-rate plugs from other manufacturers.



Features and benefits

- **Factory Wired - Single Unit Construction** - Receptacle is pre-wired to the switch for quick installation. Mount with moveable mounting feet to allow for irregular surfaces or utilize the internal mounting tubes when mounting area is limited.
- **Switch** - Available non-fusible and fusible (30A & 60A). Self-cleaning contacts are driven by solid bridge bar to prevent single phasing of motors. Quick-Make/Quick-Break action provides long electrical life. Positive opening operation protects personnel from welded contacts.
- **NEMA 4X; 12 Enclosure** - Uses poured-in seamless gasket and stainless fixing screws for the ultimate seal. Impact modified Valox enclosure is resistant to harsh environments. Hidden Hinge System on fusible units eliminates sanitation concerns.
- **Padlockable Handle** - Rugged high visibility design to comply with OSHA LO/TO requirements. (Reg. 1910.147).
- **Auxiliary Contacts** - Full range available in N/O and N/C style.

Switched and Interlocked Receptacles

HMI Series ■ Non-Fusible Interlocked ■ 20 Amp; NEMA 4X; 12

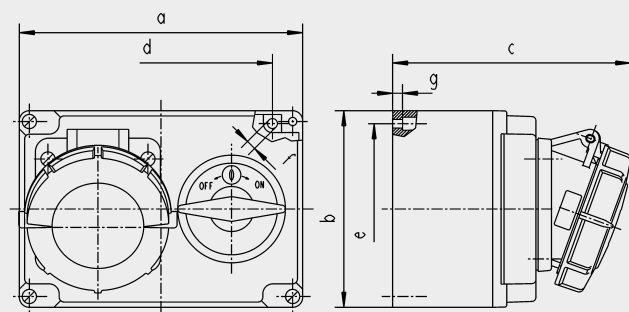


Amp	Configuration	Voltage	HP Rating	Catalog No. *	Mating Plug Catalog No.
20	2 Pole, 3 Wire	125 250 480	1 2.5 5	ME 320HMI4 ME 320HMI6 ME 320HMI7	ME 320P4W ME 320P6W ME 320P7W
	3 Pole, 4 Wire	125/250 3Ø250 3Ø480 3Ø600	1; 2.5 5 10 10	ME 420HMI12 ME 420HMI9 ME 420HMI7 ME 420HMI5	ME 420P12W ME 420P9W ME 420P7W ME 420P5W
	4 Pole, 5 Wire	3ØY120/208	5	ME 520HMI9	ME 520P9W

* Auxiliary Contact Option. Add suffix M2 to CAT. NO. 1 N/O; 1 N/C.

Compliances and Features:

- Switch: Standard 508; Industrial Control Equipment
- Receptacles: Standards 1682; 1686 Plugs and Receptacles, Pin and Sleeve Style
- IEC 60309-1; IEC 60309-2
- Environmental: NEMA Type 4X; 12
- UL94 - 5V Flame Rating
- UV Stabilized Material



Approximate Dimensions (in inches)

	2 Pole 3 Wire	3 Pole 4 Wire	4 Pole 5 Wire
a	6.69	6.69	6.69
b	4.62	4.64	4.64
c	5.35	5.47	5.62
d	5.35	5.35	5.35
e	4.09	4.09	4.09
f	0.24	0.24	0.24
g	0.23	0.23	0.23