

# SPUR AUGERS, SPEED FEED™ & FLAT BORING BITS

## SPUR AUGERS

### CLEAN HOLES

- Double wing spurs for clean hole cutting



### FAST CHIP REMOVAL

- Coated flutes for fast chip removal



### IMPACT RATED

Size	Part Number	Shank	Overall Length	Twist Length
1/2"	48-13-0700	5/16"	6-1/2"	4"
5/8"	48-13-0725	7/16"	6-1/2"	4"
3/4"	48-13-0750	7/16"	6-1/2"	4"
7/8"	48-13-0870	7/16"	6-1/2"	4"
1"	48-13-1000	7/16"	6-1/2"	4"
1-1/8"	48-13-1120	7/16"	6-1/2"	4"
1-1/4"	48-13-1250	7/16"	6-1/2"	4"
1-3/8"	48-13-1370	7/16"	6-1/2"	4"
1-1/2"	48-13-1500	7/16"	6-1/2"	4"

## SPUR AUGER SET



4 Pc Spur Auger Bit Set (6-1/2")  
48-13-4000

### Includes:

- 1/2", 3/4", 7/8", 1"

## SPEED FEED™ SELF-FEEDING WOOD BITS

### FAST CUTTING

- Up to 10X faster than flat boring bits

### CLEAN HOLES

- Double wing spurs for clean hole cutting

### FAST CHIP REMOVAL

- Coated flutes for fast chip removal



Size	Part Number
1/2"	48-13-0048
5/8"	48-13-0058
3/4"	48-13-0068
7/8"	48-13-0078
1"	48-13-0088
1-1/4"	48-13-0108

## SPEED FEED™

### SPEED FEED™ SELF-FEEDING WOOD BIT SET

4 Pc Speed Feed™ Self-Feeding Wood Bit Set  
48-13-0400

### Includes:

- 1/2", 5/8", 3/4", 1"

6 Pc Speed Feed™ Self-Feeding Wood Bit Set  
48-13-0600

### Includes:

- 1/2", 5/8", 3/4", 1"

## FLAT BORING BITS

### FAST CUTTING

- Cutting edge designed for fast, easy wood boring

### CLEAN HOLES

- Double wing spurs for clean hole cutting

Size	Part Number	Length
1/4"	48-27-0251	6"
5/16"	48-27-0311	6"
3/8"	48-27-0371	6"
7/16"	48-27-0441	6"
1/2"	48-27-0501	6"
9/16"	48-27-0561	6"
5/8"	48-27-0621	6"
11/16"	48-27-0681	6"
3/4"	48-27-0751	6"
13/16"	48-27-0811	6"
7/8"	48-27-0871	6"

Size	Part Number	Length
15/16"	48-27-0941	6"
1"	48-27-1001	6"
1-1/8"	48-27-1121	6"
1-1/4"	48-27-1251	6"
1-3/8"	48-27-1371	6"
1-1/2"	48-27-1501	6"
3/8"	48-27-0170	16"
1/2"	48-27-0175	16"
5/8"	48-27-0180	16"
3/4"	48-27-0185	16"
7/8"	48-27-0190	16"
1"	48-27-0195	16"



## FLAT BORING BIT SETS



8 Pc Universal QUIK-LOK™ Flat Boring Set (6")  
49-22-0175

### Includes:

- 3/8", 1/2", 5/8", 3/4", 7/8", 1", 1-1/8", and 6" QUIK-LOK™ extension

6 Pc Flat Boring Bit Kit (6")  
49-22-0071

### Includes:

- 3/8", 1/2", 5/8", 3/4", 7/8", 1"

## TOOL BELTS AND STORAGE



Contractor Parts Organizer  
49-17-0110

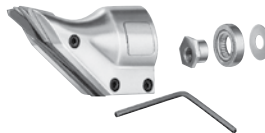


50 Pocket Bucket-Less Tool Organizer  
49-17-0180

## SHEAR AND NIBBLER ACCESSORIES

### SHEAR ACCESSORIES

Description	Part Number	For Use With
14 Gauge Shear Blade Set	48-44-0112	6815
16 and 18 Gauge Shear Blade Set	48-44-0122	6805
Shear Blade Set	48-44-0070	-
Center Blade	48-44-0150	6852-20
Left Blade	48-44-0160	6852-20
Right Blade	48-44-0170	6852-20



Replacement Swivel Shear  
Head Assembly  
48-08-0500

### NIBBLER ACCESSORIES

Description	Part Number	For Use With
Replacement Punch	48-44-0260	6890
Replacement Punch	48-44-0265	6880
Replacement Die	48-44-0270	6890
Replacement Die	48-44-0275	6880

## ACCESSORIES/HAND TOOLS/SERVICE PARTS - LIMITED LIFETIME WARRANTY

Every MILWAUKEE® accessory, hand tool and service part is warranted to the original purchaser only to be free from defects in material and workmanship. Subject to certain exceptions, MILWAUKEE® will issue credit for any accessory, hand tool or service part which, after examination, is determined by MILWAUKEE® to be defective in material or workmanship for the lifetime of the product. A MILWAUKEE® representative will inspect the defective item. A copy of the proof of purchase must be included with the credit request. This warranty does not apply to damage that MILWAUKEE® determines to be from misuse, alterations, abuse, normal wear and tear, lack of maintenance or accidents.

ACCEPTANCE OF THE EXCLUSIVE REPAIR AND REPLACEMENT REMEDIES DESCRIBED HEREIN IS A CONDITION OF THE CONTRACT FOR THE PURCHASE OF EVERY MILWAUKEE® PRODUCT. IF YOU DO NOT AGREE TO THIS CONDITION, YOU SHOULD NOT PURCHASE THE PRODUCT. IN NO EVENT SHALL MILWAUKEE® BE LIABLE FOR ANY INCIDENTAL, SPECIAL, CONSEQUENTIAL OR PUNITIVE DAMAGES, OR FOR ANY COSTS, ATTORNEY FEES, EXPENSES, LOSSES OR DELAYS ALLEGED TO BE AS A CONSEQUENCE OF ANY DAMAGE TO, FAILURE OF, OR DEFECT IN ANY PRODUCT INCLUDING, BUT NOT LIMITED TO, ANY CLAIMS FOR LOSS OF PROFITS. SOME STATES DO NOT ALLOW THE EXCLUSION OR LIMITATION OF INCIDENTAL OR CONSEQUENTIAL DAMAGES, SO THE ABOVE LIMITATION OR EXCLUSION MAY NOT APPLY TO YOU. THIS WARRANTY IS EXCLUSIVE AND IN LIEU OF ALL OTHER EXPRESS WARRANTIES, WRITTEN OR ORAL. TO THE EXTENT PERMITTED BY LAW, MILWAUKEE® DISCLAIMS ANY IMPLIED WARRANTIES, INCLUDING WITHOUT LIMITATION ANY IMPLIED WARRANTY OF MERCHANTABILITY OR FITNESS FOR A PARTICULAR USE OR PURPOSE; TO THE EXTENT SUCH DISCLAIMER IS NOT PERMITTED BY LAW, SUCH IMPLIED WARRANTIES ARE LIMITED TO THE DURATION OF THE APPLICABLE EXPRESS WARRANTY AS DESCRIBED ABOVE. SOME STATES DO NOT ALLOW LIMITATIONS ON HOW LONG AN IMPLIED WARRANTY LASTS, SO THE ABOVE LIMITATION MAY NOT APPLY TO YOU. THIS WARRANTY GIVES YOU SPECIFIC LEGAL RIGHTS, AND YOU MAY ALSO HAVE OTHER RIGHTS WHICH VARY FROM STATE TO STATE.

This warranty applies to product sold in Canada only.



## FACTORY SERVICE

BEST IN INDUSTRY SERVICE BY MILWAUKEE®  
FACTORY TRAINED TECHNICIANS.

### VANCOUVER

9000 Bill Fox Way #103a  
Burnaby, BC V5J 5J3

## CANADIAN FACTORY SERVICE CENTRES

Call Toll Free:

### TORONTO

140 Fernstaff Court, Unit 4  
Vaughan, ON L4K 3L8

### EDMONTON

14506-115 Avenue NW  
Edmonton, AB T5M 3B9

### SASKATOON

3530 Millar Avenue, Unit 630,  
Saskatoon, SK S7P 0B6

### HALIFAX

50 Akerley Boulevard, Unit 102,  
Dartmouth, NS B3B 1R8

# 1-877-948-2360

7am - 7:30pm EST  
Monday through Friday