

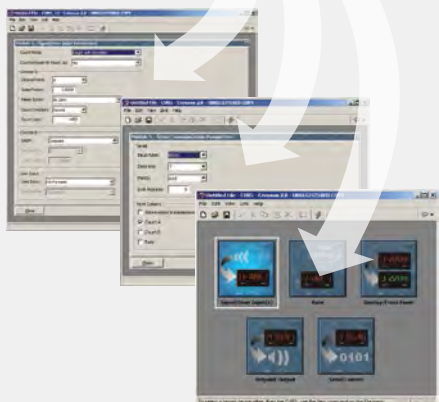
►►► **Plug-in flexibility and savings. Extendable solutions change everything.**



Crimson software: Easy-to-use, easier to value.

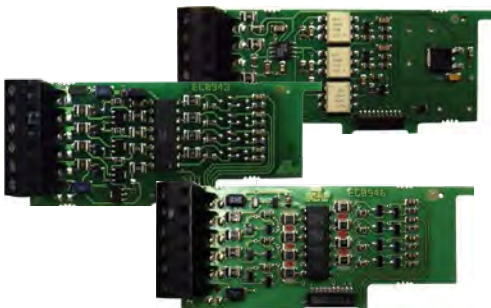
Don't underestimate the value of free.

Crimson is the only software in the industry that allows you to program panel meters, temperature controllers, HMIs, gateways, the Data Station Plus, Modular Controllers and large displays—all from the same platform. And it offers portability to let you save your configuration files to let you program other meters and Red Lion devices. This open, intuitive, menu-driven solution guides you quickly through set-up, and delivers performance and capabilities that not only rivals costly competitor software, but exceeds them. No solution is faster, easier or more flexible. At any price.



The last meter you will ever buy.

Red Lion's CUB5 and PAX meters offer the capability to add and change option cards as your application and communications requirements change. Red Lion field-upgradeable solutions are the perfect alternative to competitive meters that force you to order a new meter every time conditions change. With Red Lion meters, simply order the option card you need for easy, plug-and-play installation. With our wide range of output cards, including communications, setpoints and retransmitted analog, Red Lion can handle your challenging applications and changing requirements.



Change functions and add capabilities with plug-and-play, field-installable cards.



USB cards let you quickly connect to computers and communicate directly to the meters. No more messy converters.

Integrate your process.

Extend the reach of Red Lion panel meters by connecting them to a Graphite® HMI, Data Station Plus, or Modular Controller. Share panel meter data with other devices by using one of the 300+ protocols and log panel meter data to an IT-ready file. Use pass-through programming to configure the panel meter remotely, then modify panel meter parameters if configuration changes are required.

When connected to a Graphite HMI, Data Station Plus or Modular Controller, a panel meter can send alarm or event information via email or SMS. And you can view data remotely using a web browser for real-time monitoring and control.



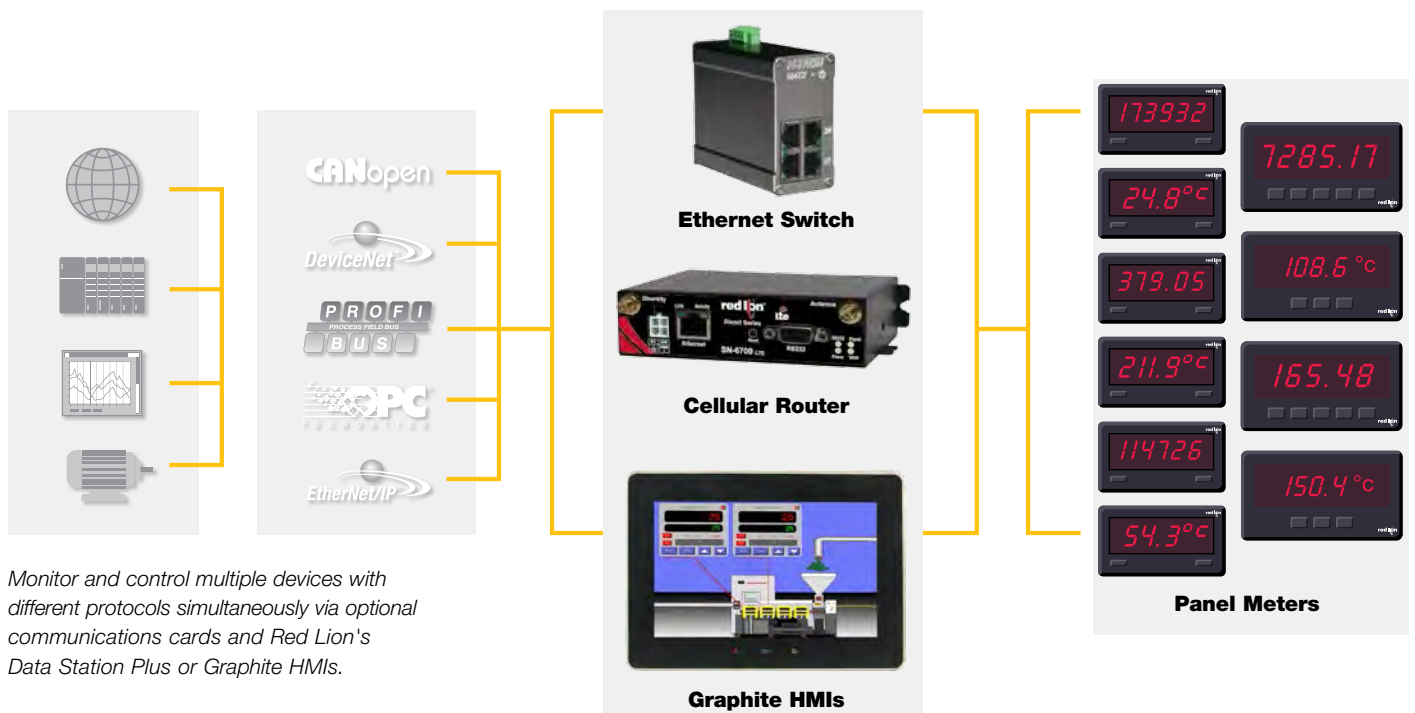
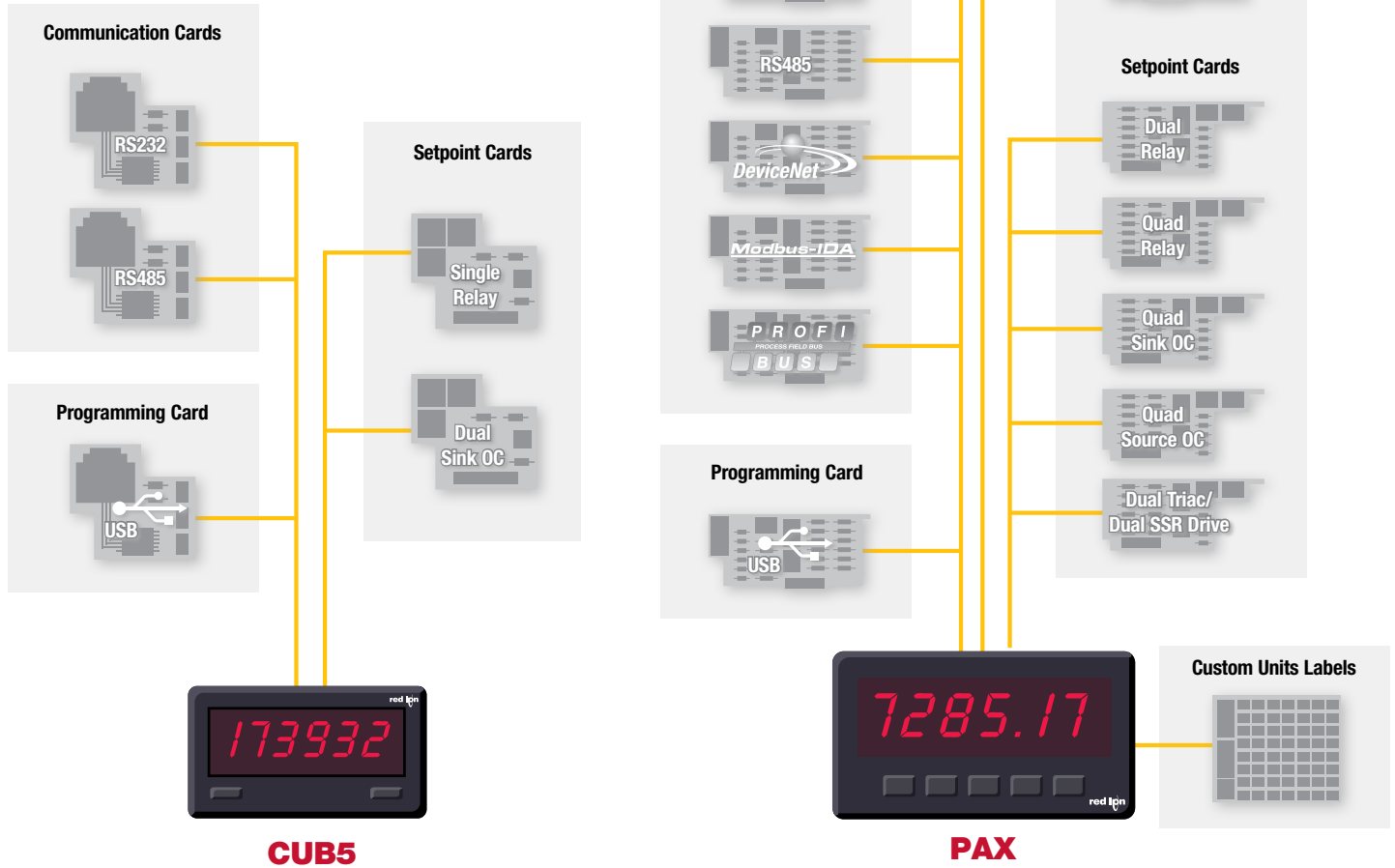
Extend your reach even further with Red Lion's industrial switches and cellular products. Complete network connectivity and communications featuring built-in redundancy coupled with robust reliability and security ensures infrastructures like yours stay up and running around the clock.



Red Lion Graphite models are available in 7", 9", 10", 12" and 15" color touchscreens.

►►► Plug-in option cards: Innovation and flexibility.

Field-Upgradeable Option Cards



▶▶▶ Panel meter specifications

Indication



CUB7
Miniature 1/32 DIN



PAX Lite
1/8 DIN Meter

Control & Indication



CUB5
Miniature Intelligent Meter



C48C/C48T
Miniature 1/16 DIN



LD
Large Displays

| Display Type | 8-Digit Reflective, Red, or Green Backlight LCD, 0.35" (9 mm) | 5- to 8-Digit Red LED Display 0.56" (14 mm) | 5- or 8-Digit Reflective or Red/Green Backlight LCD, 0.46" (12 mm) | 6-Digit Reflective or Red/Green Backlight LCD, 0.3" (7.6 mm)/0.2" (5 mm) | 5- and 6-Digit 2.25" (57 mm) or 4" (101 mm) Red LED Display |
|---------------------------|---|---|--|--|--|
| Dimension (W x H) | 2" x 1.1" (51 x 28 mm) | 3.80" x 1.95" (97 x 50 mm) | 2.95" x 1.5" (75 x 38 mm) | 1.95" x 1.95" (50 x 50 mm) | 12" x 4" (304 x 101 mm) or 16" x 4" (406 x 101 mm) or 20" x 7.87" (508 x 200 mm) or 26" x 7.87" (660 x 200 mm) |
| Input Capability | Count and Time | Count, Rate, Time, Current, Voltage, Process, Strain Gage & Temperature | Count, Rate, Time, Current, Voltage, Process and Temperature | Count or Time | Count, Rate, Time, Current, Voltage, Process and Serial Slave |
| Setpoint Capability | N/A | Dual Outputs (Some Models) | Single or Dual Outputs* | Single, Dual & Triple Outputs | Single or Dual Outputs |
| Retransmitted Analog | N/A | N/A | N/A | N/A | N/A |
| Power Source | Lithium Battery, 9 to 28 VDC for Backlighting | 85 to 250 VAC | 9 to 28 VDC | 85 to 250 VAC or 18 to 36 VDC/24 VAC | Universal Power, 50 to 250 VAC and 22 to 250 VDC |
| Sensor Excitation | N/A | Yes | N/A | Yes* | Yes |
| Other Features | Front Panel Reset or Remote Reset | Custom Units Overlay for Analog Meters | 2 Option Card Slots. Front Panel Reset or Remote Reset | N/A | N/A |
| Communications Capability | N/A | N/A | Yes* | Yes | Yes |
| NEMA 4X/IP65 | Front Panel | Front Panel | Front Panel | Front Panel | Sealed Case |

DIGITAL Applications

CUB5

PAX Lite

C48C/C48T

PAX/PAX2

Large Displays

| Counting/Totalizing | CUB5R000, CUB5B000 | PAXLC600, PAXLC800 | C48C Series | PAXC0020, PAX2D000 | LD Series, LPAX/EPAX |
|---------------------|----------------------|--------------------|-------------|----------------------|----------------------|
| Preset Count | CUB5R000*, CUB5B000* | PAXLCR00 | C48C Series | PAXI0020*, PAX2D000* | LD Series, LPAX/EPAX |
| Batch Count | CUB5R000*, CUB5B000* | N/A | C48C Series | PAXI0020*, PAX2D000* | LD Series, LPAX/EPAX |
| Rate Indication | CUB5R000, CUB5B000 | PAXLR000 | N/A | PAXR0020, PAX2D000 | LD Series, LPAX/EPAX |
| Rate Control | CUB5R000*, CUB5B000* | PAXLCR00 | N/A | PAXI0020*, PAX2D000* | LD Series, LPAX/EPAX |
| Elapsed Timing | CUB5TR00, CUB5TB00 | N/A | C48T Series | PAXTM000 | LD Series, LPAX/EPAX |
| Time Control | CUB5TR00*, CUB5TB00* | N/A | C48T Series | PAXTM000* | LD Series, LPAX/EPAX |
| Real-Time Clock | N/A | N/A | N/A | PAXCK000 | LPAX/EPAX |

*Meter requires option card to provide capability.



See our online panel meter selector www.redlion.net