

Circuit Breakers

• Revised •
11/05/13

Main and Branch Circuit Breakers^①

Breaker Type	Ampere Rating	Catalog Number	Catalog Number	UL Interrupting Ratings (kA)
QN 2-Pole 120/240V AC	150	QN2150	QN2150R ^②	10
	175	QN2175■	QN2175R ^② ■	10
	200	QN2200	QN2200R ^②	10
QNH 2-Pole 120/240V AC	150	QN2150H	QN2150RH ^②	22
	175	QN2175H■	QN2175RH ^② ■	22
	200	QN2200H	QN2200RH ^②	22
HQN 2-Pole 120/240V AC	150	HQN2150	HQN2150R ^②	65
	175	HQN2175■	—	65
	200	HQN2200	HQN2200R ^②	65

Requires 4 panel spaces, 2 adjacent and 2 opposite. **SHIPPING:** 1 per carton (Wt. 3 lbs.)

Main Breaker Kits

For use in Ultimate Load Centers ^③			For use in EQIII Load Centers			
UL Type	Ampere Rating	Catalog Number	UL Type	Ampere Rating	Catalog Number	UL Interrupting Ratings (kA)
EQ8681	100	MBK100A	EQ9675	100	MBK100	22
EQ8682	125	MBK125A	EQ9677	125	MBK125	22
EQ8693	150	MBK150A	EQ9683	150	MBK150	22
—	—	—	EQ9684	175	MBK175■	22
EQ8695	200	MBK200A	EQ9685	200	MBK200	22
EQ8696	225	MBK225A	EQ9686	225	MBK225	22

Breaker Type	Ampere Rating	Catalog Number	UL Interrupting Ratings (kA)
QPJ ^④ 3-Pole 240V AC	125	QPJ3125	10
	150	QPJ3150	10
	200	QPJ3200	10

Requires 6 spaces due to cross over design. Fits only EQIII 125-400A 3-phase load centers

SHIPPING: 5 per carton (Wt. 17 lbs.)

Breaker Type	Ampere Rating	Catalog Number	UL Interrupting Breaker Ratings (kA) Volts AC 120/240
QPP 2-Pole 120/240V AC	125	Q2125B	10
	150	Q2150B	10
	175	Q2175B■	10
	200	Q2200B	10
	225	Q2225B	10
QPPH 2-Pole 120/240V AC	125	Q2125BH	22
	150	Q2150BH	22
	175	Q2175BH■	22
	200	Q2200BH	22
	225	Q2225BH■	22
HQPP 2-Pole 120/240V AC	125	Q2125BHH■	65
	150	Q2150BHH	65
	175	Q2175BHH■	65
	200	Q2200BHH	65
	225	Q2225BHH■	65
HQPPH 2-Pole 120/240V AC	100	HQ2100BH■	100
	125	HQ2125BH■	100
	150	HQ2150BH■	100
	175	HQ2175BH■	100
	200	HQ2200BH■	100
	225	HQ2225BH■	100

For inches / millimeters conversion, see Application Data section.

■ Built to order. Allow 2-3 weeks for delivery.

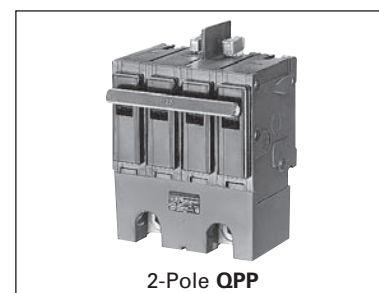
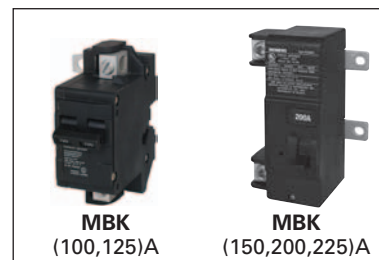
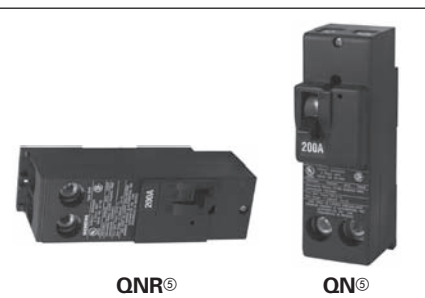
① All circuit breakers on this page are common trip.

② Reverse handle.

③ CSA Listed.

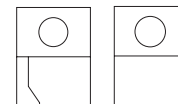
④ MBK100A for use in 100 and 125A load centers.
MBK125A for use in 125A load centers.
MBK150A for use in 150, 200 and 225A load centers.
MBK200A for use in 200 and 225A load centers.
MBK225A for use in 225A load centers.
MBK175A for use in 200 and 225A load centers.

⑤ QNR required for horizontal applications or vertical applications where the lugs are facing up. The QN breaker is required for vertical applications where the lugs are facing down as shown.



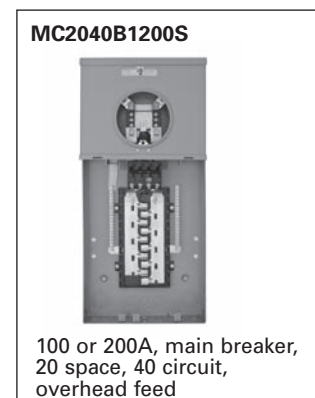
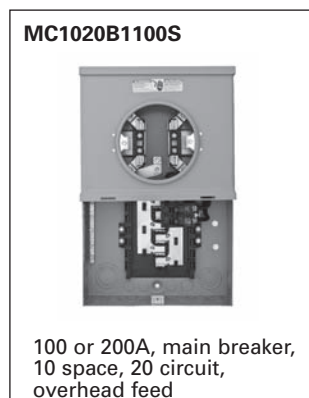
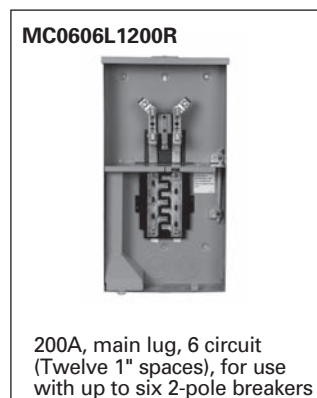
Meter Centers

• Revised •
01/22/13



Surface Mount, Over/Under Meter-Load Center Combination, 1-Phase, 3-Wire 120/240V AC

- UL listed
- Overhead and underground feed applications
- Load wires bottom or back exit only
- 22,000 AIC rated, or as noted
- Pad locking provisions on all devices
- Side hinge doors removable by backing out only one screw
- Suitable for use only as service entrance equipment
- Contact local utility to confirm meter socket placement prior to installation
- See end of section for dimensions and wiring diagrams



Catalog Number	Amp Rating (Cont.)	Utility Incoming	Bypass Type	No. of Spaces	No. of Circuits	Dimensions (inches)			Main Breaker	Short Circuit Rating	Hub Provision	5th Jaw	Cover Type
						H	W	D					

Meter-Load Center Combination, 150-200amp^③

Water-Load Center Combination, 150-200amp																											
MC0408B1150T ^⑤	150	OH/UG	None	4	8	30.0	14.0	5.0	MBK150	22,000	RX	EC5J2	Ring														
MC0408B1150RT ^⑤									Ringless																		
MC0408B1200T ^⑤	200								Ring																		
MC0408B1200RT ^⑤									Ringless																		
MC0816B1150CT ^⑤	150	OH/UG	None	8	16	32.0	14.0	5.0	MBK150	22,000	RX	EC5J2	Ring														
MC0816B1200CT ^⑤	200								MBK200				Ringless														
MC0816B1150RCT ^⑤	150								MBK150																		
MC0816B1200RCT ^⑤	200								MBK200																		
MC0816B1150RJB ^⑤	150		Horn						MBK150			RX-top, HC-bot	Installed	Ringless													
MC0816B1200RJB ^⑤	200														MBK200												
MC0816B1150T ^⑤	150															OH	None	8	16	29.0	12.0	5.2	QN2150RH	22,000	RX	EMC5J	Ring
MC0816B1200T ^⑤	200																						QN2200RH				Ringless
MC0816B1200RT ^⑤	200	QN2200RH																									
MC2040B1150RC	150	OH/UG	None	20	40	36.0	14.0	5.0	MBK150	22,000	RX	EC5J2	Ringless														
MC2040B1200RC	200								MBK200																		
MC2040B1150RJBC	150								MBK150																		
MC2040B1200RJBC	200								MBK200																		
MC0606L1200R ^{①②}	200	OH/UG	None	12	6	27.0	14.0	5.0	Main Lug	22,000	RX	EC5J2	Ringless														
MC0606L1200RA ^{①②④}																											
MC0606L1200RJB ^{①②}																											
MC0606L1200RN														None	29.0	12.0	5.2	EC5J2									

Over-Under Construction Meter Load Center Combinations^{⑥⑧}

Old Catalog Number	New Catalog Number	Amps Max	No. of Spaces	No. of Circuits	Cover Type	Mounting	Service	Bypass Type	Dimensions			Figure
									H	W	D	
JA1020B1100F	MC1020B1100F	100	10	20	Ring	Flush	OH	none	19.4	12.1	4.4	4
JA1020B1100S	MC1020B1100S					Surface						
—	MC1020B1100FZ ^⑦					Flush						
—	MC1020B1100SZ ^⑦					Surface						
JA2040B1200F	MC2040B1200F	200	20	40	Ring	Flush	OH	none	30.5	14.3	5.1	5
JA2040B1200S	MC2040B1200S					Surface					4.4	
—	MC2040B1200FZ ^⑦					Flush					5.1	
—	MC2040B1200SZ ^⑦					Surface					4.4	

- ① No main breaker provided. Accepts QN or QP type 2 or 4-pole breakers.
- ② Suitable for use as service entrance equipment when not more than six disconnecting means are provided and when not used as a lighting an appliance panel board.
- ③ Due to wire space restrictions on the trough side, the left side of the interior is limited to a 60A max branch.

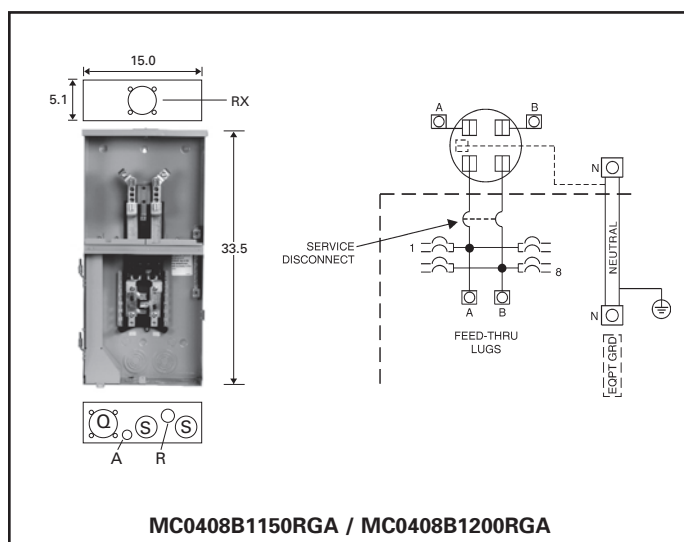
- ④ Aluminum enclosure.
- ⑤ Feed thru lugs included.
- ⑥ Dimensional and other technical data is applicable for "New Catalog Numbers" ONLY.
- ⑦ Horizontal barrier installed—no top exit of load conductors allowed. Check with sales office for utility approved.

- ⑧ UL Listed for Siemens and Murray breakers.
- ⑨ Old Catalog Numbers JA1020B1100SP and JA2040B1200SP are obsolete with no replacement.

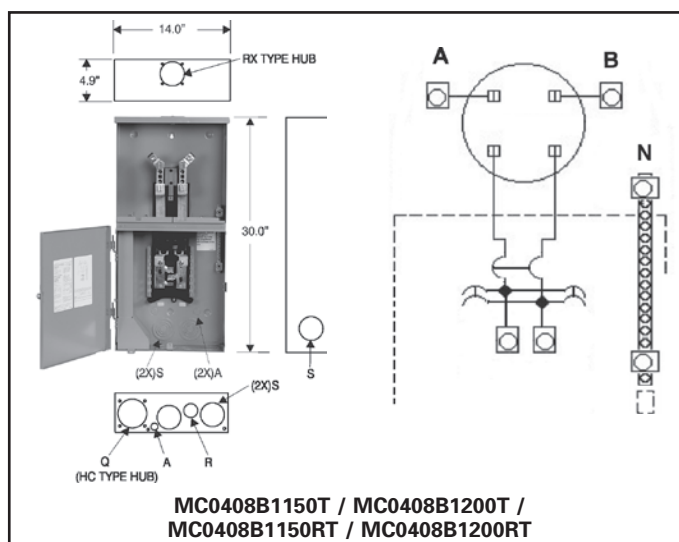
Meter Centers

Meter Combinations Dimensions and Wiring Schematics

METER
CENTERS

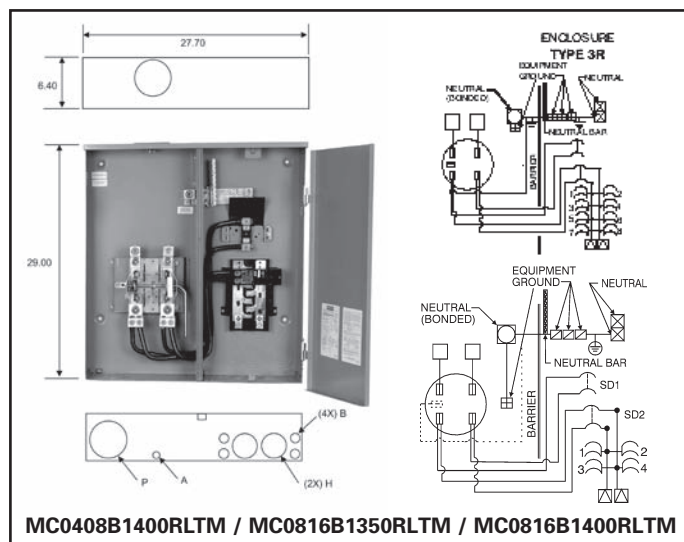


■ Product tables for above on page 2-24

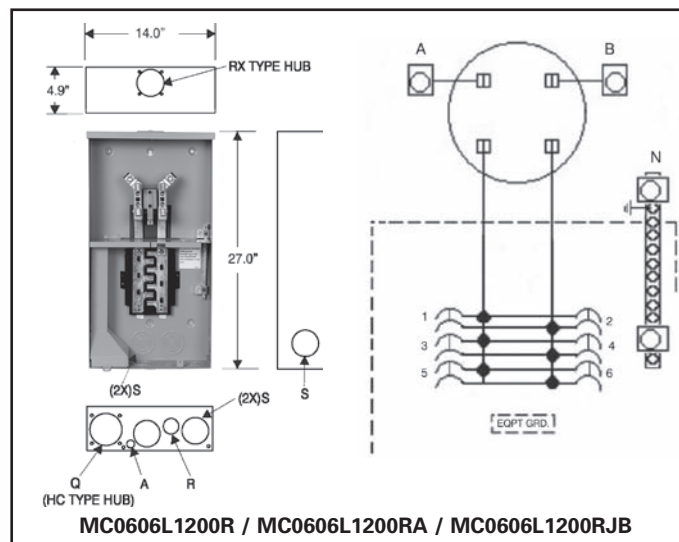


■ Product tables for above on pages 2-23 and 3-28

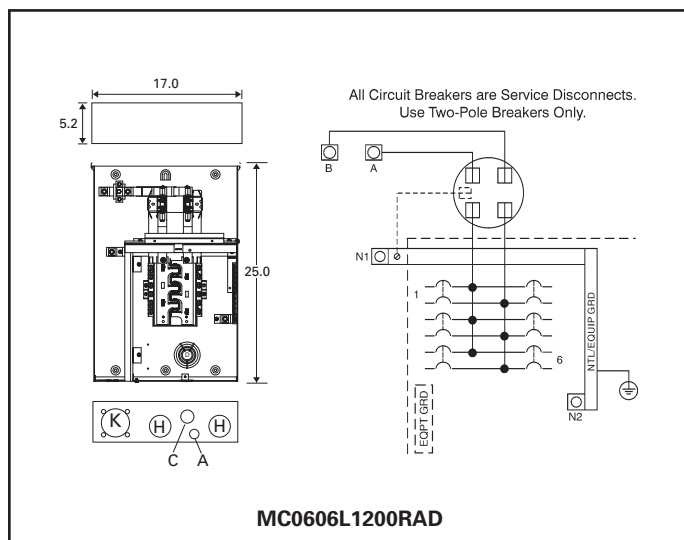
Meter
Combinations



■ Product tables for above on pages 2-26 and 3-29



■ Product tables for above on pages 2-23 and 3-28



■ Product tables for above on page 2-24

Knockout Code — Conduit Sizes

A = 1/2	L = 3/8, 1/2, 3/4
B = 1/2, 3/4	M = 3/4, 1, 1 1/4, 1 1/2, 2
C = 1/2, 3/4, 1	N = 1/4
D = 3/4, 1 1/4, 1 1/2	P = 2, 2 1/2, 3, 3 1/2, 4
E = 1, 1 1/4, 1 1/2, 2	Q = 2 1/2, 3
F = 3/4, 1, 1 1/4	R = 1/2, 3/4, 1, 1 1/4
G = 1, 1 1/4, 1 1/2	S = 1/2, 3/4, 1, 1 1/4, 1 1/2, 2, 2 1/2
H = 1, 1 1/4, 1 1/2, 2, 2 1/2	T = 1 1/2, 2, 2 1/2
J = 1 1/4, 1 1/2, 2, 2 1/2, 3	U = 3/4, 1, 1 1/4, 1 1/2, 2, 2 1/2, 3
K = 1, 1 1/4, 2, 2 1/2, 3	V = 3/4, 1, 1 1/4, 1 1/2

Combination Meter Sockets



Catalog Number Logic

