

# Pushbutton Units and Indicator Lights

## Class 50 Standard Duty Pushbutton Stations

General

### Features

- Snap In Legend Inserts
- Flush and Surface Mounted Types
- Convertible Selector
- Double Break Contacts
- Dual Voltage Pilot Light with Snap In Lens
- Conversion Kits
- UL Listed File #E22655
- CSA Certified File #LR6535

### Application

Standard duty control stations are used with magnetic controllers to control the starting, stopping, reversing or speed of applicable motors.

Stations are assembled of one, two or three push button, selector switch or pilot light units in a variety of combinations to provide compact control units for remote control of magnetic starters and contactors.

Station enclosures are available in Type 1 surface mounted, 1B flush plate mounted and 4 watertight.

### Features

Type 1 surface mounted bases are constructed of 14 gauge sheet steel, primed and finished in baked gray enamel. The base is predrilled to receive a variety of contact blocks, pilot lights and accessory devices. Covers are of 20 gauge sheet steel, wrap-around construction, primed and finished in baked gray enamel. Siemens Type 4 watertight heavy duty push button stations are supplied with a provision to padlock the stop button in the depressed position. Enclosures are predrilled and tapped for 3/4" conduit.

Contact blocks have double break, fine silver contacts with a NEMA B600 rating. Type 4 stations have a NEMA A600 rating.

The pilot light assembly is dual voltage with clearly marked pressure type terminals for 120 volt or 240 volt connection.

The lens of the pilot light snaps into the cover and is available in both red and green.

Push buttons are equipped with an operator into which a selected legend insert is snapped. Legend inserts are molded thermoplastic and come in a wide variety of legends and colors.

The selector switch operator can be instantly set for two or three positions at any time.

### Mushroom Head

50ZMH mounts on any standard push button operator. The Mushroom Head is red molded thermoplastic, 1 1/2" in diameter, and provides a large operator for emergency stop or similar applications.

### Mechanical Interlock

50ZAM is a base mounted zinc plate, dichromate dipped, steel assembly. When mounted in conjunction with Duplex Contact Block 50ZAC3 (one NO and one NO) the interlock prevents one contact from being closed while the other contact is closed.

### Padlock Attachment Kit

50ZAL can be mounted to any Type 1 surface mounted station by the lower screw which fastens the cover to the station base. Made of heavy steel, chrome plated, the attachment provides for the padlocking of a push button in the depressed position or a selector switch in any position. When used with a push button operator, raised Legend Insert D53493003 (Red Stop) must be used.

### Electrical Ratings

NEMA AC Ratings 50/60Hz

Nema B600 5 Continuous Amps

Volts	Make	Break
120	30	3
240	15	1.5
480	7.5	0.75
600	6	0.6
VA	3600	360

### Ordering Information

- Legend Inserts [see page 17-307](#).
- Accessories [see page 17-307](#).



**2 Push Buttons  
Surface Mounting, NEMA 1**



**2 Push Buttons  
Flush Mounting, NEMA 1B**



**1 Push Button  
Surface Mounting**



**1 Selector Switch  
Flush Mounting**



**2 Push Buttons  
1 Selector Switch**



**1 Pilot Light  
2 Push Buttons**

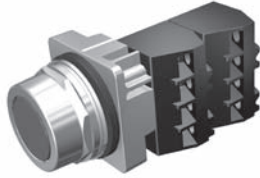
# Push Buttons & Signaling Devices

30mm Water, Oil Tight & Corrosion Resistant – Class 52

Push Button

## Selection Guide

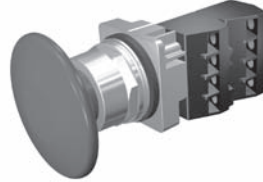
### Momentary Push Button - Non-Illuminated



Flush Head



Extended Head



Large Mushroom Head 2 1/2"



Small Mushroom Head 1 3/4"

<b>Part Number</b>	<b>52</b>	<b>a</b>	<b>M</b> <b>b</b>	<b>c</b>	<b>d</b>	<b>e<sup>1</sup></b>
--------------------	-----------	----------	----------------------	----------	----------	----------------------

a	Code	Finish
	P	Chrome - Command 52
	B	Epoxy Coated - Black Max

b	Code	Type
	M	Momentary Push Button

c	Code	Style / Head Type
	Flush / Extended Cap <sup>2</sup>	
	8A	Flush
	8B	Extended
	Mushroom Head Metal	
	9A	Small Mushroom Head 1 3/4" (44.5mm)
	Mushroom Head Plastic	
	9W	Small Mushroom Head 1 3/4" (44.5mm)
	9V	Large Mushroom Head 2 1/2" (63.5mm)

d	Code	Plastic	Metal
	1	Black	—
	2	Red	Red
	3	Green	Green
	4	Yellow	—
	5	Blue	—
	6	Gray	—
	7	All Color Caps	—
	8	Orange	—
C	—	Chrome	

e <sup>1</sup>	Code	Contact Blocks
	A	1 NO + 1 NC
	B	2 NO + 2 NC
	C	3 NO + 3 NC
	D	4 NO + 4 NC
	E	1 NC (LB)
	F	2 NO
	G	2 NC
	H	1NO (EM)
	J	1 NC
K	1 NO	

<sup>1</sup> For operator without contact blocks leave position e blank.

<sup>2</sup> Products available fall 2014. For current product offer please refer to the 2010 Industrial Control Catalog.

# Push Buttons & Signaling Devices

30mm Water, Oil Tight & Corrosion Resistant – Class 52

Push Buttons

## Selection Tables

### Momentary Push Button - Non-Illuminated

Head Style	Contacts	Color	Finish	
			Chrome	Black Max
Flush	—	Less cap	<b>52PM8</b>	<b>52BM8</b>
		Black	<b>52PM8A1</b>	<b>52BM8A1</b>
		Red	<b>52PM8A2</b>	<b>52BM8A2</b>
		Green	<b>52PM8A3</b>	<b>52BM8A3</b>
		Yellow	<b>52PM8A4</b>	<b>52BM8A4</b>
	1 NO - 1 NC	Black	<b>52PM8A1A</b>	<b>52BM8A1A</b>
		Red	<b>52PM8A2A</b>	<b>52BM8A2A</b>
		Green	<b>52PM8A3A</b>	<b>52BM8A3A</b>
	1 NO	Black	<b>52PM8A1K</b>	<b>52BM8A1K</b>
		Red	<b>52PM8A2K</b>	<b>52BM8A2K</b>
		Green	<b>52PM8A3K</b>	<b>52BM8A3K</b>
	1 NC	Red	<b>52PM8A2J</b>	<b>52BM8A2J</b>
Extended	—	Black	<b>52PM8B1</b>	<b>52BM8B1</b>
		Red	<b>52PM8B2</b>	<b>52BM8B2</b>
		Green	<b>52PM8B3</b>	<b>52BM8B3</b>
	1 NO	Black	<b>52PM8B1K</b>	<b>52BM8B1K</b>
		Red	<b>52PM8B2K</b>	<b>52BM8B2K</b>
1 NC	Red	<b>52PM8B2J</b>	<b>52BM8B2J</b>	
Mushroom Head Plastic Ø 1 3/4"	—	Less cap	<b>52PM9</b>	<b>52BM9</b>
		Red	<b>52PM9W2</b>	<b>52BM9W2</b>
	1 NO	Green	<b>52PM9W3K</b>	<b>52BM9W3K</b>
	1 NO - 1 NC	Black	<b>52PM9W1A</b>	<b>52BM9W1A</b>
		Red	<b>52PM9W2A</b>	<b>52BM9W2A</b>
1 NO - 1 NC	Green	<b>52PM9W3A</b>	<b>52BM9W3A</b>	
Mushroom Head Plastic Ø 2 1/2"	—	Red	<b>52PM9V2</b>	<b>52BM9V2</b>
		Black	<b>52PM9V1A</b>	<b>52BM9V1A</b>
	1 NO - 1 NC	Red	<b>52PM9V2A</b>	<b>52BM9V2A</b>
		Green	<b>52PM9V3A</b>	<b>52BM9V3A</b>

Readily available items are in **bold**.  
This is a small representation of stocked items.

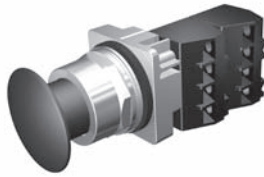
# Push Buttons & Signaling Devices

30mm Water, Oil Tight & Corrosion Resistant – Class 52

Non-Illuminated Push Pull

## Selection Guide

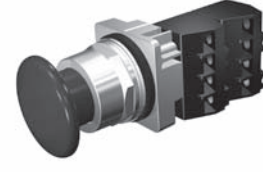
### 2 & 3 Position Push-Pull Mushroom Head Devices - Non-Illuminated



Mushroom Head Metal Ø 1 3/4"



Mushroom Head Plastic Ø 2 1/2"



Mushroom Head Plastic Ø 1 3/4"

Part Number	<b>52</b>	<u>    </u>	<b>P</b>	<u>    </u>	<u>    </u>	<u>    </u>	<u>    </u>
		<b>a</b>	<b>b</b>	<b>c</b>	<b>d</b>	<b>e</b>	<b>f<sup>3</sup></b>

<b>a</b>	Code	Finish
	P	Chrome-Command 52
	B	Epoxy Coated-Black Max

<b>b</b>	Code	Type
	P	Push Pull

<b>c</b>	Code	Function
	2	2 positions - maintained <sup>1</sup>
	3	3 positions - momentary in - momentary out
	7	3 positions - maintained in - momentary out

<b>d</b>	Code	Style
	A	Small metal 1-3/4" (44.5 mm)
	W	Small plastic 1-3/4" (44.5 mm)
	V	Large plastic 2-1/2" (63.5 mm)

<b>e</b>	Code	Color	
		Plastic	Metal
	1	Black	—
	2	Red <sup>1</sup>	Red <sup>1</sup>
	3	Green	Green
	4	Yellow	—
	5	Blue	—
	6	Gray	—
	8	Orange	—
	C	—	Chrome
		No Operating Head	
	Z	No head	

<b>f<sup>3</sup></b>	Code	Contact Blocks
		2 Position
	A	1 NO + 1 NC <sup>1</sup>
	B	2 NO + 2 NC <sup>1</sup>
	C	3 NO + 3 NC <sup>1</sup>
	D	4 NO + 4 NC <sup>1</sup>
	E	1 NC (LB)
	F	2 NO
	G	2 NC <sup>1</sup>
	H	1 NO (EM)
	J	1 NC <sup>1</sup>
	K	1 NO
	Q	1 NO - 1 NC (ELB)
		3 Position
	U	1 NO - 1 NC extra late break <sup>2</sup>

<sup>1</sup> EMERGENCY-STOP control devices according to IEC 60947-5-5 when provided with red operating head and positively driven NC contact blocks. Positive opening contacts according to IEC 60947-5-1, Appendix K.

<sup>2</sup> Blocks cannot be interchanged (stop-start circuit - pull to start, push to stop).

<sup>3</sup> For operator without contact blocks leave position f blank.

# Push Buttons & Signaling Devices

30mm Water, Oil Tight & Corrosion Resistant – Class 52

Non-Illuminated Push Pull

## Selection Tables

### 2 & 3 Position Push-Pull Mushroom Head Devices - Non-Illuminated

		2 pos - maintained					
		Metal Ø 1 3/4"		Plastic Ø 1 3/4"		Plastic Ø 2 1/2"	
Contacts	Color	Chrome	Black Max	Chrome	Black Max	Chrome	Black Max
—	Black	—	—	<b>52PP2W1</b>	52BP2W1	52PP2V1	2BP2V1
	Red	<b>52PP2A2</b>	52BP2A2	<b>52PP2W2</b>	<b>52BP2W2</b>	<b>52PP2V2</b>	52BP2V2
	Green	52PP2A3	52BP2A3	<b>52PP2W3</b>	52BP2W3	52PP2V3	52BP2V3
	Yellow	—	—	52PP2W4	52BP2W4	52PP2V4	52BP2V4
1 NO - 1 NC	Red	<b>52PP2A2A<sup>1</sup></b>	<b>52BP2A2A<sup>1</sup></b>	<b>52PP2W2A<sup>1</sup></b>	<b>52BP2W2A<sup>1</sup></b>	<b>52PP2V2A<sup>1</sup></b>	52BP2V2A <sup>1</sup>
	Green	<b>52PP2A3A</b>	52BP2A3A	<b>52PP2W3A</b>	52BP2W3A	<b>52PP2V3A</b>	—
	Yellow	—	—	<b>52PP2W4A</b>	52BP2W4A	52BP2V4A	52BP2V4A
	Chrome	<b>52PP2ACA</b>	52BP2ACA	—	—	—	—

		3 pos - momentary in - momentary out					
		Metal Ø 1 3/4"		Plastic Ø 1 3/4"		Plastic Ø 2 1/2"	
Contacts	Color	Chrome	Black Max	Chrome	Black Max	Chrome	Black Max
—	Black	—	—	52PP3W1	52BP3W1	52PP3V1	52BP3V1
	Red	52PP3A2	52BP3A2	<b>52PP3W2</b>	52BP3W2	52PP3V2	52BP3V2
	Green	52PP3A3	52BP3A3	52PP3W3	52BP3W3	52PP3V3	2BP3V3
	Chrome	52PP3AC	52BP3AC	—	—	—	—
1 NO - 1 NCELB	Red	52PP3A2U	52BP3A2U	52PP3W2U	52BP3W2U	52PP3V2U	52BP3V2U
	Green	52PP3A3U	52BP3A3U	52PP3W3U	52BP3W3U	52PP3V3U	52BP3V3U

		3 pos - maintained in - momentary out					
		Metal Ø 1 3/4"		Plastic Ø 1 3/4"		Plastic Ø 2 1/2"	
Contacts	Color	Chrome	Black Max	Chrome	Black Max	Chrome	Black Max
—	Black	—	—	52PP7W1	52BP7W1	52PP7V1	52BP7V1
	Red	<b>52PP7A2</b>	52BP7A2	52PP7W2	52BP7W2	52PP7V2	52BP7V2
	Green	52PP7A3	52BP7A3	52PP7W3	52BP7W3	52PP7V3	52BP7V3
	Chrome	52PP7AC	52BP7AC	—	—	—	—
1 NO - 1 NCELB	Red	52PP7A2U1	52BP7A2U	52PP7W2U	52BP7W2U	52PP7V2U	52BP7V2U
	Green	52PP7A3U	52BP7A3U	52PP7W3U	52BP7W3U	52PP7V3U	52BP7V3U

Readily available items are in **bold**.  
This is a small representation of stocked items.

<sup>1</sup> EMERGENCY-STOP control devices according to IEC 60947-5-5

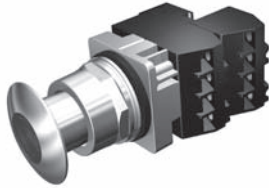
# Push Buttons & Signaling Devices

30mm Water, Oil Tight & Corrosion Resistant – Class 52

Illuminated Push Pull & Push Button

## Selection Guide

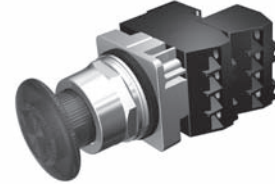
### 2 & 3 Position Push-Pull Mushroom Head Devices - Illuminated



Mushroom Head Metal Ø 1 3/4"



Mushroom Head Plastic Ø 2 1/2"



Mushroom Head Plastic Ø 1 3/4"

Part Number	<b>52</b>	<b>a</b>	<b>P</b>	<b>c</b>	<b>d</b>	<b>e</b>	<b>f</b>	<b>g</b>
-------------	-----------	----------	----------	----------	----------	----------	----------	----------

a	Code	Finish
	P	Chrome-Command 52
B	Epoxy Coated-Black Max	

b	Code	Type
	P	Push Pull Operator

c	Code	Function
	2	2 positions - maintained <sup>1</sup>
	3	3 positions - momentary in - momentary out <sup>2</sup>
	7	3 positions - maintained in - momentary out <sup>2</sup>

d	Code	Operation	
	Full Voltage <sup>3</sup> (AC/DC)		
		Incandescent	LED <sup>4</sup>
B	6-8V	6V	6V
C	12-13V	—	—
D	24-28V	24-28V	24-28V
E	120V	120V	120V
F	—	240V	240V
Transformer <sup>3</sup>			
G	120V AC		
H	240V AC		
J	480V AC		
K	600V AC		

e	Code	Style / Color
	Mushroom Head Metal Ø 1 3/4" (44.5mm)	
2		Red <sup>1</sup>
3		Green
5		Blue
9		Amber
A		Clear
B		White
Mushroom Head Plastic Ø 1 3/4" (44.5 mm)		
R		Red <sup>1</sup>
S		Green
T		Amber
Mushroom Head Plastic Ø 2 1/2" (63.5mm)		
D		Red <sup>1</sup>
E		Green
F		Amber
No Head (full voltage & transformer only)		
Z		No head

f	Code	Contact Blocks
	2 Position	
A		1 NO + 1 NC <sup>1</sup>
B		2 NO - 2 NC <sup>1</sup>
F		2 NO
G		2 NC <sup>1</sup>
J		1 NC <sup>1</sup>
K		1 NO
Q		1 NO - 1 NC (ELB)
3 Position		
U		1 NO - 1 NC extra late break <sup>2</sup>

g	Code	Bulb Type
	Blank	Incandescent
	B	LED
	Y	Super-Bright LED <sup>5</sup>

<sup>1</sup> EMERGENCY-STOP control devices according to IEC 60947-5-5 when provided with red operating head and positively driven NC contact blocks.

Positive opening contacts according to IEC 60947-5-1, Appendix K,

<sup>2</sup> Blocks cannot be interchanged (stop-start circuit - pull to start, push to stop).

<sup>3</sup> Default bulb type is incandescent. For LED options, append field g. LED option not available on units sold "no head".

<sup>4</sup> LED voltages apply to table g option code B and Y. 6V and 120V are currently AC only. Replaced by AC/DC rated versions end of 2014.

<sup>5</sup> Not available in 240V.

# Push Buttons & Signaling Devices

30mm Water, Oil Tight & Corrosion Resistant – Class 52

Illuminated Push Pull

## Selection Tables

Pilot Devices

Type	Lamp Type	Voltage	Color	Contacts
Full Voltage (AC/DC)	LED	24V	Red	1 NO - 1 NC
			Green	1 NO - 1 NC
	Incandescent	24V	Red	1 NO - 1 NC
			Green	1 NO - 1 NC
		120V	Red	1 NO - 1 NC
			—	—
Transformer (AC)	LED	120V	Red	1 NO - 1 NC
			Green	1 NO - 1 NC
	Incandescent	120V	Red	1 NO - 1 NC
			Green	1 NO - 1 NC

Operator Type			
2 pos - maintained			
Metal Ø 1 3/4"		Plastic Ø 1 3/4"	
Chrome	Black Max	Chrome	Black Max
<b>52PP2D2AB<sup>1</sup></b>	<b>52BP2D2AB<sup>1</sup></b>	<b>52PP2DRAB<sup>1</sup></b>	52BP2DRAB <sup>1</sup>
<b>52PP2D3AB</b>	52BP2D3AB	52PP2DSAB	52BP2DSAB
<b>52PP2D2A<sup>1</sup></b>	52BP2D2A <sup>1</sup>	<b>52PP2DRA<sup>1</sup></b>	52BP2DRA <sup>1</sup>
<b>52PP2D3A</b>	52BP2D3A	<b>52PP2DSA</b>	52BP2DSA
52PP2E2A <sup>1</sup>	52BP2E2A <sup>1</sup>	52PP2ERA <sup>1</sup>	52BP2ERA <sup>1</sup>
52PP2E2	52BP2E2	52PP2ER	52BP2ER
<b>52PP2G2AB<sup>1</sup></b>	52BP2G2AB <sup>1</sup>	52PP2GRAB <sup>1</sup>	52BP2GRAB <sup>1</sup>
<b>52PP2G3AB</b>	52BP2G3AB	52PP2GSAB	52BP2GSAB
<b>52PP2G2A<sup>1</sup></b>	52BP2G2A <sup>1</sup>	<b>52PP2GRA<sup>1</sup></b>	52BP2GRA <sup>1</sup>
<b>52PP2G3A</b>	<b>52BP2G3A</b>	<b>52PP2GSA</b>	52BP2GSA

Type	Lamp Type	Voltage	Color	Contacts
Full Voltage (AC/DC)	LED	24V	Green	1 NO - 1 NCELB
			Green	1 NO - 1 NCELB
	Incandescent	24V	Red	1 NO - 1 NCELB
			Red	—
		120V	Red	—
			—	—
Transformer (AC)	LED	120V	Red	1 NO - 1 NCELB
			Green	1 NO - 1 NCELB
	Incandescent	120V	Red	1 NO - 1 NCELB
			Green	1 NO - 1 NCELB

Operator Type			
3 pos - momentary in - momentary out			
Metal Ø 1 3/4"		Plastic Ø 1 3/4"	
Chrome	Black Max	Chrome	Black Max
52PP3D3UB	52BP3D3UB	52PP3DRUB	52BP3DRUB
52PP3D3U	52BP3D3U	52PP3DSU	52BP3DSU
52PP3D2U	52BP3D2U	52PP3DRU	52BP3DRU
52PP3E2	52BP3E2	52PP3ER	52BP3ER
52PP3G2UB	52BP3G2UB	52PP3GRUB	52BP3GRUB
<b>52PP3G3UB</b>	52BP3G3UB	52PP3GSUB	52BP3GSUB
52PP3G2U	52BP3G2U	52PP3GRU	52BP3GRU
52PP3G3U	52BP3G3U	52PP3GRU	52BP3GRU

17  
CONTROL PRODUCTS

Type	Lamp Type	Voltage	Color	Contacts
Full Voltage (AC/DC)	LED	24V	Green	1 NO - 1 NCELB
			Green	1 NO - 1 NCELB
	Incandescent	24V	Red	1 NO - 1 NCELB
			Red	—
		120V	Red	—
			—	—
Transformer (AC)	LED	120V	Red	1 NO - 1 NCELB
			Green	1 NO - 1 NCELB
	Incandescent	120V	Red	1 NO - 1 NCELB
			Green	1 NO - 1 NCELB

Operator Type			
3 pos - maintained in - momentary out			
Metal Ø 1 3/4"		Plastic Ø 1 3/4"	
Chrome	Black Max	Chrome	Black Max
52PP7D3UB	52BP7D3UB	52PP7DSUB	52BP7DSUB
52PP7D3U	52BP7D3U	52PP7DSU	52BP7DSU
52PP7D2U	52BP7D2U	52PP7DRU	52BP7DRU
52PP7E2	52BP7E2	52PP7ER	52BP7ER
52PP7G2UB	52BP7G2UB	52PP7GRUB	52BP7GRUB
52PP7G3UB	52BP7G3UB	52PP7GSUB	52BP7GSUB
52PP7G2U	52BP7G2U	52PP7GRU	52BP7GRU
52PP7G3U	52BP7G3U	52PP7GRU	52BP7GRU

Readily available items are in **bold**.  
This is a small representation of stocked items.

<sup>1</sup> EMERGENCY-STOP control devices according to IEC 60947-5-5

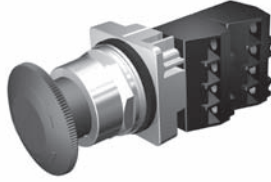
# Push Buttons & Signaling Devices

30mm Water, Oil Tight & Corrosion Resistant – Class 52

Non-Illuminated Twist-to-Release

## Selection Guide

### 2 Position Twist-to-Release Devices Mushroom Head - Non-Illuminated



Plastic 1 3/4" Mushroom Head - Chrome



Plastic 1 3/4" Mushroom Head - Black Max

<b>Part Number</b>	<b>52</b>	<b>a</b>	<b>R</b>	<b>8</b>	<b>W</b>	<b>e</b>	<b>f<sup>2</sup></b>
--------------------	-----------	----------	----------	----------	----------	----------	----------------------

Finish	Function	Style	Color	Contacts	Part Number
Chrome	2 Position Twist-to-Release	Plastic 1 3/4" Mushroom Head	Red	1 NO - 1 NC	<b>52PR8W2A</b>
Black Max	2 Position Twist-to-Release	Plastic 1 3/4" Mushroom Head	Red	1 NO - 1 NC	<b>52BR8W2A</b>
Chrome	2 Position Twist-to-Release	Plastic 1 3/4" Mushroom Head	Red	None	52PR8W2

Readily available items are in **bold**.  
This is a small representation of stocked items.

<b>a</b>	<b>Code</b>	<b>Finish</b>
	<b>P</b>	Chrome-Command 52
	<b>B</b>	Epoxy Coated-Black Max
<b>b</b>	<b>Code</b>	<b>Function</b>
	<b>R</b>	2 Position Twist-to-Release, Maintained <sup>1</sup>
<b>c</b>	<b>Code</b>	<b>Style</b>
	<b>8</b>	Plastic 1 3/4" Mushroom Head
<b>d</b>	<b>Code</b>	<b>Lamp Type</b>
	<b>W</b>	Non-Illuminated

<b>e</b>	<b>Code</b>	<b>Color</b>
	<b>2</b>	Red <sup>1</sup>
	<b>3</b>	Green
	<b>4</b>	Yellow
	<b>Z</b>	No head
<b>f<sup>2</sup></b>	<b>Code</b>	<b>Contact Blocks</b>
	<b>A</b>	1 NO + 1 NC <sup>1</sup>
	<b>B</b>	2 NO + 2 NC <sup>1</sup>
	<b>C</b>	3 NO + 3 NC <sup>1</sup>
	<b>D</b>	4 NO + 4 NC <sup>1</sup>
	<b>E</b>	1 NC (LB)
	<b>F</b>	2 NO
	<b>G</b>	2NC <sup>1</sup>
	<b>H</b>	1NO (EM)
	<b>J</b>	1 NC <sup>1</sup>
	<b>K</b>	1 NO

<sup>1</sup> EMERGENCY-STOP control devices according to IEC 60947-5-5 when provided with red operating head and positively driven NC contact blocks. Positive opening contacts according to IEC 60947-5-1, Appendix K.

<sup>2</sup> For operator without contact blocks leave position f blank.

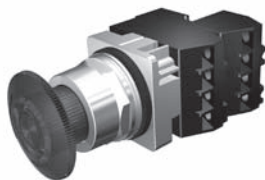
# Push Buttons & Signaling Devices

30mm Water, Oil Tight & Corrosion Resistant – Class 52

Illuminated Twist-to-Release

## Selection Guide

### 2 Position Twist-to-Release Mushroom Head Devices - Illuminated



Plastic 1 3/4" Mushroom Head - Chrome



Plastic 1 3/4" Mushroom Head - Black Max

Part Number	<b>52</b>	<b>a</b>	<b>R</b>	<b>8</b>	<b>d</b>	<b>e</b>	<b>f</b>	<b>g</b>
-------------	-----------	----------	----------	----------	----------	----------	----------	----------

Finish	Style	Voltage	Bulb Type	Color	Contacts	Part Number
Chrome	Plastic 1 3/4" Mushroom Head	24V	LED	Red	1 NO - 1 NC	52PR8DRAB
Chrome	Plastic 1 3/4" Mushroom Head	120V	Incandescent	Red	1 NO - 1 NC	52PR8ERA
Chrome	Plastic 1 3/4" Mushroom Head	120V	LED	Red	1 NO - 1 NC	52PR8GRAB

Readily available items are in **bold**.  
This is a small representation of stocked items.

a	Code	Finish
	<b>P</b>	Chrome-Command 52
	<b>B</b>	Epoxy Coated-Black Max

b	Code	Function
	<b>R</b>	2 Position Twist-to-Release, Maintained

c	Code	Style
	<b>8</b>	Plastic 1 3/4" Mushroom Head

d	Code	Operation	
		<b>Full Voltage<sup>2</sup> (AC/DC)</b>	
		<b>Incandescent</b>	<b>LED<sup>3</sup></b>
	<b>B</b>	6-8V	6V
	<b>C</b>	12-13V	—
	<b>D</b>	24-28V	24-28V
	<b>E</b>	120V	120V
	<b>F</b>	—	240V
		<b>Transformer<sup>2</sup></b>	
	<b>G</b>	120V AC	
	<b>H</b>	240V AC	
	<b>J</b>	480V AC	
<b>K</b>	600V AC		

e	Code	Color
	<b>R</b>	Red <sup>1</sup>
	<b>S</b>	Green
	<b>T</b>	Amber
	<b>Z</b>	No head

f	Code	Contact Blocks
	<b>A</b>	1 NO + 1 NC <sup>1</sup>
	<b>B</b>	2 NO + 2 NC <sup>1</sup>
	<b>C</b>	3 NO + 3 NC <sup>1</sup>
	<b>D</b>	4 NO + 4 NC <sup>1</sup>
	<b>E</b>	1 NC (LB)
	<b>F</b>	2 NO
	<b>G</b>	2NC <sup>1</sup>
	<b>H</b>	1NO (EM)
	<b>J</b>	1 NC <sup>1</sup>
<b>K</b>	1 NO	

g	Code	Bulb Type
	<b>Blank</b>	Incandescent
	<b>B</b>	LED
	<b>Y</b>	Super-Bright LED <sup>4</sup>

1 EMERGENCY-STOP control devices according to IEC 60947-5-5 when provided with red operating head and positively driven NC contact blocks. Positive opening contacts according to IEC 60947-5-1, Appendix K, Molded bodies.

2 Default bulb type is incandescent. For LED options, append field g. LED option not available on units sold "no head."

3 LED voltages apply to table g option code B and Y. 6V and 120V are currently AC only. Replaced by AC/DC rated versions end of 2014.

4 Not available in 240V.

# Push Buttons & Signaling Devices

30mm Water, Oil Tight & Corrosion Resistant – Class 52

Indicator Light

## Selection Guide

### Indicator Light



Plastic Lens



Glass Lens

Part Number	<b>52</b>	<u>    </u> <b>a</b>	<u>    </u> <b>L</b> <b>b</b>	<u>    </u> <b>c</b>	<u>    </u> <b>d</b>	<u>    </u> <b>e</b>	<u>    </u> <b>f</b>
-------------	-----------	-------------------------	-------------------------------------	-------------------------	-------------------------	-------------------------	-------------------------

<b>a</b>	Code	Finish
	P	Chrome-Command 52
	B	Epoxy Coated-Black Max

<b>b</b>	Code	Type
	L	Indicator Light

<b>c</b>	Code	Style
	4	Plastic Lens
	5	Glass Lens

<b>d</b>	Code	Operation	
		Full Voltage <sup>1</sup> (AC/DC)	
		Incandescent	LED <sup>2</sup>
	B	6-8V	6V
	C	12-13V	—
	D	24-28V	24-28V
	E	120V	120V
	F	—	240V
		Transformer <sup>1</sup>	
	G	120V AC	
	H	240V AC	
	J	480V AC	
	K	600V AC	

<b>e</b>	Code	Color
	2	Red
	3	Green
	5	Blue
	7	All Colors
	9	Amber
	A	Clear
	B	White
N	No Lens	

<b>f</b>	Code	Bulb Type
	Blank	Incandescent
	XB	LED
	XY	Super-Bright LED <sup>3</sup>

<sup>1</sup> Default bulb type is incandescent. For LED options, append field f. LED option not available on units sold "No Lens".

<sup>2</sup> LED voltages apply to table f option code XB and XY. 6V, 24V (Super Bright only) and 120V are currently AC only. Replaced by AC/DC rated versions end of 2014.

<sup>3</sup> Not available in 240V.

# Push Buttons & Signaling Devices

30mm Water, Oil Tight & Corrosion Resistant – Class 52

Indicator Lights

## Selection Tables

### Indicator Light

Type	Lamp Type	Voltage	Color	Plastic Lens	
				Chrome	Black Max
Full Voltage (AC/DC)	LED	24V	Red	<b>52PL4D2XB</b>	<b>52BL4D2XB</b>
			Green	<b>52PL4D3XB</b>	<b>52BL4D3XB</b>
			Blue	<b>52PL4D5XB</b>	<b>52BL4D5XB</b>
			Amber	<b>52PL4D9XB</b>	<b>52BL4D9XB</b>
			White	<b>52PL4DBXB</b>	<b>52BL4DBXB</b>
		120V	Red	<b>52PL4E2XB</b>	<b>52BL4E2XB</b>
			Green	<b>52PL4E3XB</b>	<b>52BL4E3XB</b>
			Amber	<b>52PL4E9XB</b>	<b>52BL4E9XB</b>
			Clear	<b>52PL4EAXB</b>	<b>52BL4EAXB</b>
			White	<b>52PL4EBXB</b>	<b>52BL4EBXB</b>
	Incandescent	24V	Red	<b>52PL4D2</b>	<b>52BL4D2</b>
			Green	<b>52PL4D3</b>	<b>52BL4D3</b>
			Blue	<b>52PL4D5</b>	<b>52BL4D5</b>
			Amber	<b>52PL4D9</b>	<b>52BL4D9</b>
		120V	White	<b>52PL4DB</b>	<b>52BL4DB</b>
			No Lens	<b>52PL4DN</b>	<b>52BL4DN</b>
			Red	<b>52PL4E2</b>	<b>52BL4E2</b>
			Green	<b>52PL4E3</b>	<b>52BL4E3</b>
Transformer (AC)	LED	120V	Red	<b>52PL4G2XB</b>	<b>52BL4G2XB</b>
			Green	<b>52PL4G3XB</b>	<b>52BL4G3XB</b>
			Amber	<b>52PL4G9XB</b>	<b>52BL4G9XB</b>
		480V	White	<b>52PL4GBXB</b>	<b>52BL4GBXB</b>
			Red	<b>52PL4J2XB</b>	<b>52BL4J2XB</b>
			Green	<b>52PL4J3XB</b>	<b>52BL4J3XB</b>
	Incandescent	120V	White	<b>52PL4JBXB</b>	<b>52BL4JBXB</b>
			Red	<b>52PL4G2</b>	<b>52BL4G2</b>
			Green	<b>52PL4G3</b>	<b>52BL4G3</b>
			Amber	<b>52PL4G9</b>	<b>52BL4G9</b>
			White	<b>52PL4GB</b>	<b>52BL4GB</b>
			No Lens	<b>52PL4GN</b>	<b>52BL4GN</b>
		240V	Red	<b>52PL4H2</b>	<b>52BL4H2</b>
			Green	<b>52PL4H3</b>	<b>52BL4H3</b>
			Red	<b>52PL4J2</b>	<b>52BL4J2</b>
		480V	Green	<b>52PL4J3</b>	<b>52BL4J3</b>
			Amber	<b>52PL4J9</b>	<b>52BL4J9</b>

Readily available items are in **bold**.  
This is a small representation of stocked items.

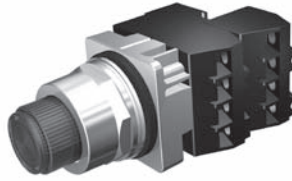
# Push Buttons & Signaling Devices

30mm Water, Oil Tight & Corrosion Resistant – Class 52

Illuminated Push Button & Push-to-Test

## Selection Guide

### Push Button & Push-to-Test - Illuminated



Extended Lens



Flush Lens

Part Number	52	<u>    </u>	<u>    </u>	<u>    </u>	<u>    </u>	<u>    </u>	<u>    </u>	<u>    </u>
		<b>a</b>	<b>T</b>	<b>c</b>	<b>d</b>	<b>e</b>	<b>f</b>	<b>g</b>

a	Code	Finish
	P	Chrome-Command 52
	B	Epoxy Coated-Black Max

b	Code	Function
	T	Illuminated Push Button / Push-to-Test <sup>1</sup>

c	Code	Style
	6	Extended Lens
	8	Flush Lens <sup>2</sup>

d	Code	Operation	
		Full Voltage <sup>3</sup> (AC/DC)	
		Incandescent	LED <sup>4</sup>
	B	6-8V	6V
	C	12-13V	—
	D	24-28V	24-28V
	E	120V	120V
	F	—	240V
		Transformer <sup>3</sup>	
	G	120V AC	
	H	240V AC	
	J	480V AC	
	K	600V AC	

e	Code	Color
	2	Red
	3	Green
	5	Blue
	7	All Colors
	9	Amber
	A	Clear
	B	White
N	No Lens	

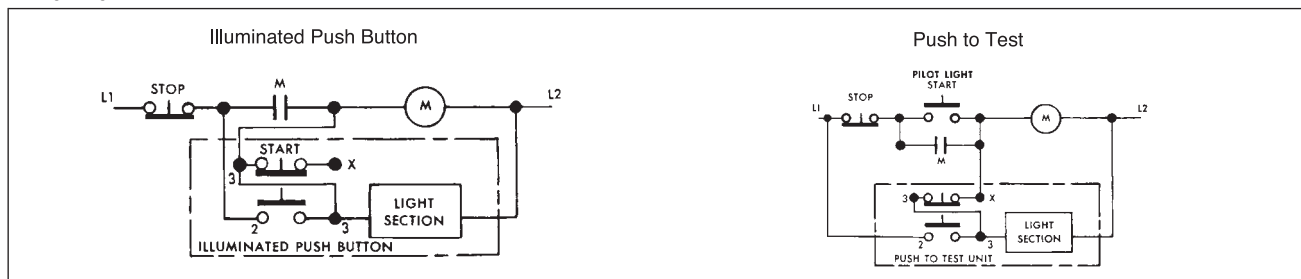
f	Code	Contact Blocks
	A	1 NO - 1 NC
	B	2 NO + 2 NC
	C	3 NO + 3 NC
	D	4 NO + 4 NC
	E	1 NC (LB)
	F	2 NO
	G	2 NC
	H	1NO (EM)
	J	1 NC
K	1 NO	

g	Code	Bulb Type
	Blank	Incandescent
	B	LED
	Y	Super-Bright LED <sup>5</sup>

1 For push-to-test functionality, wire according to wiring diagram below.

2 Products available fall 2014.

#### Wiring Diagrams



# Push Buttons & Signaling Devices

30mm Water, Oil Tight & Corrosion Resistant – Class 52

Illuminated Push Buttons & Push-to-Test

## Selection Tables

### Push Button & Push-to-Test - Illuminated

Type	Lamp Type	Voltage	Color	Contacts	Extended Lens	
					Chrome	Black Max
Full Voltage (AC/DC)	LED	24V	Red	1 NO - 1 NC	<b>52PT6D2AB</b>	<b>52BT6D2AB</b>
			Green	1 NO - 1 NC	<b>52PT6D3AB</b>	<b>52BT6D3AB</b>
			Blue	1 NO - 1 NC	<b>52PT6D5AB</b>	<b>52BT6D5AB</b>
			Amber	1 NO - 1 NC	<b>52PT6D9AB</b>	<b>52BT6D9AB</b>
			White	1 NO - 1 NC	<b>52PT6DBAB</b>	<b>52BT6DBAB</b>
	Incandescent	24V	Red	1 NO - 1 NC	<b>52PT6E2AB</b>	<b>52BT6E2AB</b>
			Green	1 NO - 1 NC	<b>52PT6E3AB</b>	<b>52BT6E3AB</b>
			Red	1 NO - 1 NC	<b>52PT6D2A</b>	<b>52BT6D2A</b>
			Green	1 NO - 1 NC	<b>52PT6D3A</b>	<b>52BT6D3A</b>
			Blue	1 NO - 1 NC	<b>52PT6D5A</b>	<b>52BT6D5A</b>
	Incandescent	120V	Amber	1 NO - 1 NC	<b>52PT6D9A</b>	<b>52BT6D9A</b>
			White	1 NO - 1 NC	<b>52PT6DBA</b>	<b>52BT6DBA</b>
			Red	1 NO - 1 NC	<b>52PT6E2A</b>	<b>52BT6E2A</b>
			Green	1 NO - 1 NC	<b>52PT6E3A</b>	<b>52BT6E3A</b>
			Red	1 NO - 1 NC	<b>52PT6G2AB</b>	<b>52BT6G2AB</b>
Transformer (AC)	LED	120V	Green	1 NO - 1 NC	<b>52PT6G3AB</b>	<b>52BT6G3AB</b>
			Amber	1 NO - 1 NC	<b>52PT6G9AB</b>	<b>52BT6G9AB</b>
			White	1 NO - 1 NC	<b>52PT6GBAB</b>	<b>52BT6GBAB</b>
			Red	1 NO - 1 NC	<b>52PT6H2AB</b>	<b>52BT6H2AB</b>
			Green	1 NO - 1 NC	<b>52PT6H3AB</b>	<b>52BT6H3AB</b>
	Incandescent	240V	Red	1 NO - 1 NC	<b>52PT6G2A</b>	<b>52BT6G2A</b>
			Green	1 NO - 1 NC	<b>52PT6G3A</b>	<b>52BT6G3A</b>
			Amber	1 NO - 1 NC	<b>52PT6G9A</b>	<b>52BT6G9A</b>
			White	1 NO - 1 NC	<b>52PT6GBA</b>	<b>52BT6GBA</b>
			No Lens	1 NO - 1 NC	<b>52PT6GNA</b>	<b>52BT6GNA</b>
	Incandescent	120V	Green	1 NO - 1 NC	<b>52PT6H3A</b>	<b>52BT6H3A</b>
			Green	1 NO - 1 NC	<b>52PT6H3A</b>	<b>52BT6H3A</b>
	Incandescent	480V	Green	1 NO - 1 NC	<b>52PT6JAA</b>	<b>52BT6JAA</b>
			Clear	1 NO - 1 NC	<b>52PT6JAA</b>	<b>52BT6JAA</b>

Readily available items are in **bold**.  
This is a small representation of stocked items.