

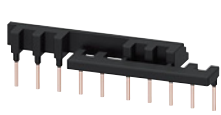
Power Contactors for Switching Motors

Accessories and Spare Parts for SIRIUS 3RT Contactors and SIRIUS 3RH2 Contactor Relays

Accessories

Link modules

PU (UNIT, SET, M) = 1
 PS* = 1 unit (unless otherwise specified)
 PG = 41B



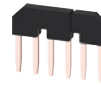
3RA2913-3DA1



3RA2913-3DA2



3RT1933-3D



3RT1916-4BA31



3RT2916-4BA32



3RT1936-4BA31

For con- tactors	Size	Version	SD	Article No.	Price per PU	SD	Article No.	Price per PU
Type			d			d		

Single wiring modules for making 3-pole contactor assemblies

				Screw terminals	Spring-type terminals		
				⊕	⊕		
3RT201	S00-S00	<ul style="list-style-type: none"> Top (in-phase) Bottom (with phase reversal) 	PS = 5 units	▶ 3RA2913-3DA1	5	▶ 3RA2913-3DA2	
			PS = 5 units	5	3RA2913-3EA1	5	3RA2913-3EA2
3RT202	S0-S0	<ul style="list-style-type: none"> Top (in-phase) Bottom (with phase reversal) 	PS = 5 units	▶ 3RA2923-3DA1	5	▶ 3RA2923-3DA2	
			PS = 5 units	5	3RA2923-3EA1	5	3RA2923-3EA2
3RT203	S2-S2	<ul style="list-style-type: none"> Top (in-phase), contactor clearance 10 mm Bottom (with phase reversal), Contactor clearance 10 mm 		▶ 3RA1933-3D		▶ 3RA1933-3D	
				2	3RA1933-3E	2	3RA1933-3E
3RT204	S3-S3	<ul style="list-style-type: none"> Top (in-phase), contactor clearance 10 mm Bottom (with phase reversal), Contactor clearance 10 mm 		▶ 3RA1943-3D		▶ 3RA1943-3D	
				5	3RA1943-3E	5	3RA1943-3E
3RT1.5	S6-S6	<ul style="list-style-type: none"> Top (in-phase, for connection with box terminal), contactor clearance 10 mm Top (with phase reversal, for connection without box terminal), contactor clearance 10 mm 		▶ 3RA1953-3D		▶ 3RA1953-3D	
				2		2	
				▶ 3RA1953-3P		▶ 3RA1953-3P	
				5		5	

Star jumpers (links for paralleling), 3-pole

				Screw terminals	Spring-type terminals		
				⊕	⊕		
3RT201	S00	With through-hole		▶ 3RT1916-4BA31	2	▶ 3RT2916-4BA32	
3RT202	S0	The links for paralleling can be reduced by one pole.		▶ 3RT1926-4BA31	2	▶ 3RT2926-4BA32	
3RT203	S2			▶ 3RT1936-4BA31		▶ 3RT1936-4BA31	
3RT204	S3	Without connecting terminal		▶ 3RT1946-4BA31		▶ 3RT1946-4BA31	
3RT1.5	S6			2	3RT1956-4BA31	2	3RT1956-4BA31
3RT1.6, 3RT1.7	S10, S12			2	3RT1966-4BA31	2	3RT1966-4BA31