

# SIRIUS 3RW Soft Starters

## Basic Performance Soft Starters

### 3RW40 Soft Starters

#### Accessories

For motor starter protectors	For soft starters	Version	SD	Article No.	Price per PU	PU (UNIT, SET, M)	PS*	PG
Size	Size		d					

#### Standard mounting rail adapters



3RA2932-1CA00

		For mechanical fixing of motor starter protector and soft starter; for snapping onto standard mounting rail or for screw fixing						
<b>S2</b>	<b>S2</b>	<b>Single-unit packaging</b>	2	<b>3RA2932-1CA00</b>		1	1 unit	41B

For soft starters	SD	Article No.	Price per PU	PU (UNIT, SET, M)	PS*	PG
Type	Size					
	d					

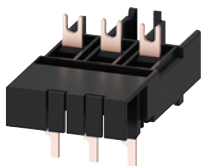
#### Fans (to increase switching frequency and for device mounting in positions different to the standard position)

3RW4928-8VB00,  
3RW4947-8VB00

3RW402.	<b>S0</b>	▶	<b>3RW4928-8VB00</b>	1	1 unit	42G
3RW403., 3RW404.	<b>S2, S3</b>	▶	<b>3RW4947-8VB00</b>	1	1 unit	42G

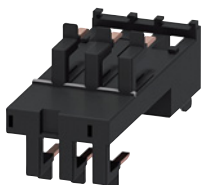
For soft starters	Motor starter protectors	SD	Article No.	Price per PU	PU (UNIT, SET, M)	PS*	PG
Type	Size	Size					
		d					

#### Link modules to motor starter protectors<sup>1)</sup>



3RA2921-1BA00

3RW402.	<b>S0</b>	<b>S00/S0</b>	2	<b>3RA2921-1BA00</b>	1	1 unit	41B
3RW4036.	<b>S2</b>	<b>S2</b>	▶	<b>3RA2931-1AA00</b>	1	1 unit	41B
3RW4046., 3RW4047.	<b>S3</b>	<b>S3</b>	▶	<b>3RA1941-1AA00</b>	1	1 unit	41B



3RA2921-2GA00

3RW402.	<b>S0</b>	<b>S0</b>	2	<b>3RA2921-2GA00</b>	1	1 unit	41B
---------	-----------	-----------	---	----------------------	---	--------	-----

<sup>1)</sup> Can be used in size S0 up to maximum 32 A.  
Can be used in size S2 up to maximum 65 A in combination with 3RA2932-1CA00 standard mounting rail adapter (specially for soft starters).  
Can be used in size S3 only with mounting plate.

# SIRIUS 3RW Soft Starters

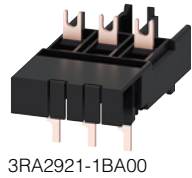
## Basic Performance Soft Starters

### 3RW30 Soft Starters

#### Accessories

For soft starters Type	Size	Motor starter protectors Size	SD	Article No.	Price per PU	PU (UNIT, SET, M)	PS*	PG
---------------------------	------	----------------------------------	----	-------------	-----------------	-------------------------	-----	----

#### Link modules to motor starter protectors<sup>1)</sup>



3RA2921-1BA00

3RW301.	<b>S00</b>	<b>S00</b>	2			1	1 unit	41B
3RW302.	<b>S0</b>	<b>S00/S0</b>	2			1	1 unit	41B
3RW3036.	<b>S2</b>	<b>S2</b>	▶			1	1 unit	41B
3RW3046., 3RW3047.	<b>S3</b>	<b>S3</b>	▶			1	1 unit	41B

#### Screw terminals



<b>3RA2921-1BA00</b>						1	1 unit	41B
<b>3RA2921-1BA00</b>						1	1 unit	41B
<b>3RA2931-1AA00</b>						1	1 unit	41B
<b>3RA1941-1AA00</b>						1	1 unit	41B

#### Spring-type terminals



3RW301.	<b>S00</b>	<b>S00</b>	2			1	1 unit	41B
3RW302.	<b>S0</b>	<b>S0</b>	2			1	1 unit	41B

<b>3RA2911-2GA00</b>						1	1 unit	41B
<b>3RA2921-2GA00</b>						1	1 unit	41B

3RA2921-2GA00

<sup>1)</sup> Can be used in size S0 up to maximum 32 A. Can be used in size S2 up to maximum 65 A in combination with 3RA2932-1CA00 standard mounting rail adapter (specially for soft starters). Can be used in size S3 only on mounting plate.

Version	Functionality Functions	Use	SD	Article No.	Price per PU	PU (UNIT, SET, M)	PS*	PG
---------	----------------------------	-----	----	-------------	-----------------	-------------------------	-----	----

#### Covers and push-in lugs (only for 3RW3003)



3RP1902

<b>Sealable covers</b>	For securing against unauthorized adjustment of setting knobs	For devices with 1 or 2 CO contacts	5			1	5 units	41H
------------------------	---	-------------------------------------	---	--	--	---	---------	-----

<b>3RP1902</b>						1	5 units	41H
----------------	--	--	--	--	--	---	---------	-----



3RP1903

<b>Push-in lugs for screw fixing</b>	--	For devices with 1 or 2 CO contacts	5			1	10 units	41H
--------------------------------------	----	-------------------------------------	---	--	--	---	----------	-----

<b>3RP1903</b>						1	10 units	41H
----------------	--	--	--	--	--	---	----------	-----

Version	SD	Article No.	Price per PU	PU (UNIT, SET, M)	PS*	PG
---------	----	-------------	-----------------	-------------------------	-----	----

#### Tools for opening spring-type terminals in sizes S00 and S0



3RA2908-1A

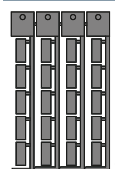
<b>Screwdrivers</b>	For all SIRIUS devices with spring-type terminals Length approx. 200 mm, 3.0 mm x 0.5 mm, titanium gray/black, partially insulated		2			1	1 unit	41B
---------------------	---	--	---	--	--	---	--------	-----

#### Spring-type terminals



<b>3RA2908-1A</b>						1	1 unit	41B
-------------------	--	--	--	--	--	---	--------	-----

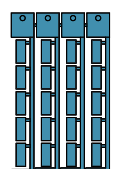
#### Blank labels



3RT2900-1SB20

<b>Unit labeling plates<sup>1)</sup></b>	For SIRIUS devices		20			100	340 units	41B
	• 20 mm x 7 mm, titanium gray							

<b>3RT2900-1SB20</b>						100	340 units	41B
----------------------	--	--	--	--	--	-----	-----------	-----



3RT1900-1SB20

	• 20 mm x 7 mm, pastel turquoise		20			100	340 units	41B
--	----------------------------------	--	----	--	--	-----	-----------	-----

<b>3RT1900-1SB20</b>						100	340 units	41B
----------------------	--	--	--	--	--	-----	-----------	-----

<sup>1)</sup> PC labeling systems for individual inscription of unit labeling plates are available from: murrplastik Systemtechnik GmbH, see page 16/16.

# Motor Starter Protectors/Circuit Breakers

## SIRIUS 3RV2 Motor Starter Protectors/Circuit Breakers

### Accessories

#### Mounting accessories

#### Link modules

Feeders can be easily assembled from single devices with the help of the link modules. The following table shows the different combination options for devices with screw or spring-type terminals.

Combination devices	3RV2 motor starter protectors/ circuit breakers Size	3RT2 contactors; 3RW30, 3RW40 soft starters; 3RF34 solid-state contactors Size	Link modules	
			Screw terminals	Spring-type terminals
<b>Link modules for connecting switching devices to 3RV2 motor starter protectors/circuit breakers<sup>1)</sup></b>				
3RT2 contactors with AC or DC coil	S00	S00	3RA1921-1DA00	3RA2911-2AA00
	S0	S00		--
	S2	S2	3RA2931-1AA00	--
	S3 <sup>2)</sup>	S3 <sup>2)</sup>	3RA1941-1AA00	--
3RT2 contactors with AC coil	S00	S0	3RA2921-1AA00	--
	S0	S0		3RA2921-2AA00 <sup>3)</sup>
3RT2 contactors with DC coil	S00	S0	3RA2921-1BA00	--
	S0	S0		3RA2921-2AA00
3RW30 soft starters	S00	S00	3RA2921-1BA00	3RA2911-2GA00
	S0	S00		--
3RW30/3RW40 soft starters	S00	S0	3RA2921-1BA00	--
	S0	S0		3RA2921-2GA00
	S2 <sup>4)</sup>	S2 <sup>4)</sup>	3RA2931-1AA00	--
	S3 <sup>5)</sup>	S3 <sup>5)</sup>	3RA1941-1AA00	--
3RF34 solid-state contactors	S00/S0	S00	3RA2921-1BA00	--
<b>Hybrid link modules for connecting contactors with spring-type terminals to 3RV2 motor starter protectors/circuit breakers with screw terminals<sup>6)</sup></b>				
3RT2 contactors with AC or DC coil	S00	S00	3RA2911-2FA00	--
	S0	S0	3RA2921-2FA00	--

-- Version not possible

- 1) The link modules cannot be used for 3RV2.21-4PA1., 3RV2.21-4FA1., 3RV2.31-4K.1., 3RV2.31-4R.1., 3RV2.32-4K.1., 3RV2.32-4R.1., 3RV27, 3RV28 and 3RV1011 motor starter protectors/circuit breakers.
- 2) To assemble the feeder between a motor starter protector and a contactor in size S3, the 3RA2942-1AA00 standard mounting rail adapter must be used.
- 3) A spacer for height compensation on AC contactors, size S0, is optionally available, see page 7/56.
- 4) To assemble the feeder between a motor starter protector and a soft starter in size S2, the 3RA2932-1CA00 standard mounting rail adapter must be used.
- 5) It is only permissible to assemble the feeder between the motor starter protector and the soft starter in size S3 on a mounting plate.
- 6) The hybrid link modules for motor starter protector to contactor cannot be used for the 3RV2.21-4PA1., 3RV2.21-4FA1., 3RV27 and 3RV28 motor starter protectors/circuit breakers. They are suitable only for constructing direct-on-line starters.

#### Notes:

- Link modules can be used in
  - Size S00: up to max. 16 A
  - Size S0: up to max. 32 A
  - Size S2: up to max. 65 A
- Hybrid link modules can be used in
  - Size S00: up to max. 16 A
  - Size S0: up to max. 32 A

# Motor Starter Protectors/Circuit Breakers

## SIRIUS 3RV2 Motor Starter Protectors/Circuit Breakers

### Accessories

#### Mounting accessories

#### Link modules

Actuating voltage of contactor	Size	3RV2 motor starter protectors/circuit breakers	SD	Article No.	Price per PU	PU (UNIT, SET, M)	PS*	PG
--------------------------------	------	--	----	-------------	--------------	-------------------	-----	----

#### Link modules for motor starter protector to contactor<sup>1)</sup>



3RA2921-1AA00

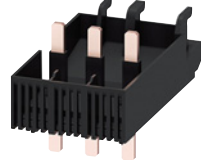
For mechanical and electrical connection between motor starter protector and contactor with screw terminals

##### Single-unit packaging

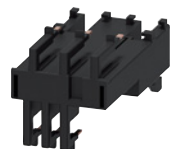
AC/DC	S00	S00/S0	▶	<b>3RA1921-1DA00</b>	1	1 unit	41B
AC	S0	S00/S0	▶	<b>3RA2921-1AA00</b>	1	1 unit	41B
DC	S0	S00/S0	▶	<b>3RA2921-1BA00</b>	1	1 unit	41B
AC/DC	S2	S2	▶	<b>3RA2931-1AA00</b>	1	1 unit	41B
AC/DC	S3	S3	▶	<b>3RA1941-1AA00</b>	1	1 unit	41B

##### Multi-unit packaging

AC/DC	S00	S00/S0	▶	<b>3RA1921-1D</b>	1	10 units	41B
AC	S0	S00/S0	▶	<b>3RA2921-1A</b>	1	10 units	41B
DC	S0	S00/S0	▶	<b>3RA2921-1B</b>	1	10 units	41B
AC/DC	S2	S2	▶	<b>3RA2931-1A</b>	1	5 units	41B
AC/DC	S3	S3	▶	<b>3RA1941-1A</b>	1	5 units	41B



3RA2931-1AA00



3RA2911-2AA00

For mechanical and electrical connection between motor starter protector and contactor with spring-type terminals

##### Single-unit packaging

AC/DC	S00	S00	▶	<b>3RA2911-2AA00</b>	1	1 unit	41B
AC <sup>2)</sup>	S0	S0	▶	<b>3RA2921-2AA00</b>	1	1 unit	41B
DC	S0	S0	▶	<b>3RA2921-2AA00</b>	1	1 unit	41B

##### Multi-unit packaging

AC/DC	S00	S00	▶	<b>3RA2911-2A</b>	1	10 units	41B
AC <sup>2)</sup>	S0	S0	▶	<b>3RA2921-2A</b>	1	10 units	41B
DC	S0	S0	▶	<b>3RA2921-2A</b>	1	10 units	41B

##### Spacers<sup>2)</sup>

For compensating the height on AC contactors

Single-unit packaging	S0	S0	▶	<b>3RA2911-1CA00</b>	1	1 unit	41B
Multi-unit packaging	S0	S0	▶	<b>3RA2911-1C</b>	1	5 units	41B



3RA2911-1CA00

<sup>1)</sup> The link modules for motor starter protector to contactor cannot be used for 3RV2.21-4PA1., 3RV2.21-4FA1., 3RV2.31-4K.1., 3RV2.31-4R.1., 3RV2.32-4K.1., 3RV2.32-4R.1., 3RV27, 3RV28 and 3RV1011 motor starter protectors/circuit breakers.

<sup>2)</sup> A spacer for height compensation on AC contactors size S0 is optionally available.

#### Note:

Link modules can be used in

- Size S00: up to max. 16 A
- Size S0: up to max. 32 A
- Size S2: up to max. 65 A

# Motor Starter Protectors/Circuit Breakers


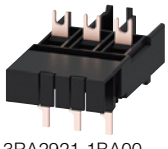
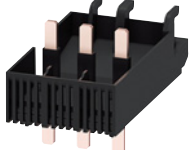


## SIRIUS 3RV2 Motor Starter Protectors/Circuit Breakers

### Accessories

#### Mounting accessories

Size	3RV2 motor starter protectors/circuit breakers	SD	Article No.	Price per PU	PU (UNIT, SET, M)	PS*	PG
3RW30, 3RW40 soft starters; 3RF34 solid-state contactors		d					

#### Link modules for motor starter protector to soft starter<sup>1)</sup> and motor starter protector to solid-state contactor<sup>1)</sup>

Image	Description	SD	Article No.	Price per PU	PU (UNIT, SET, M)	PS*	PG
<b>Connection between motor starter protector and soft starter/ solid-state contactor with screw terminals</b>							
<b>Screw terminals</b> 							
 3RA2921-1BA00	<b>Single-unit packaging</b>						
	S00	S00/S0	2	<b>3RA2921-1BA00</b>	1	1 unit	41B
	S0	S00/S0	2	<b>3RA2921-1BA00</b>	1	1 unit	41B
	S2 <sup>2)</sup>	S2	▶	<b>3RA2931-1AA00</b>	1	1 unit	41B
	S3 <sup>3)</sup>	S3 <sup>3)</sup>	▶	<b>3RA1941-1AA00</b>	1	1 unit	41B
 3RA2931-1AA00	<b>Multi-unit packaging</b>						
	S00	S00/S0	2	<b>3RA2921-1B</b>	1	10 units	41B
	S0	S00/S0	2	<b>3RA2921-1B</b>	1	10 units	41B
	S2 <sup>2)</sup>	S2	▶	<b>3RA2931-1A</b>	1	5 units	41B
	S3 <sup>3)</sup>	S3 <sup>3)</sup>	▶	<b>3RA1941-1A</b>	1	5 units	41B
<b>Connection between motor starter protector and soft starter with spring-type terminals</b>							
<b>Spring-type terminals</b> 							
 3RA2921-2GA00	<b>Single-unit packaging</b>						
	S00	S00	2	<b>3RA2911-2GA00</b>	1	1 unit	41B
	S0	S0	2	<b>3RA2921-2GA00</b>	1	1 unit	41B

- <sup>1)</sup> The link modules for motor starter protector to soft starter and motor starter protector to solid-state contactor cannot be used for 3RV2.21-4PA1., 3RV2.21-4FA1., 3RV2.31-4K.1., 3RV2.31-4R.1., 3RV2.32-4K.1., 3RV2.32-4R.1., 3RV27, 3RV28 and 3RV1011 motor starter protectors/ circuit breakers.
- <sup>2)</sup> To assemble the feeder between a motor starter protector and a soft starter in size S2, the 3RA2932-TCA00 standard mounting rail adapter must be used.
- <sup>3)</sup> It is only permissible to assemble the feeder between the motor starter protector and the soft starter in size S3 on a mounting plate.

#### Note:

Link modules can be used in

- Size S00: up to max. 16 A
- Size S0: up to max. 32 A
- Size S2: up to max. 65 A