

Motor Starter Protectors/Circuit Breakers

SIRIUS 3RV2 Motor Starter Protectors/Circuit Breakers

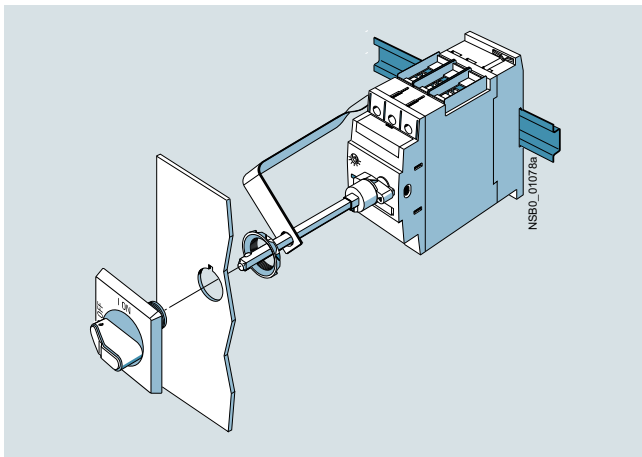
Accessories

Rotary operating mechanisms

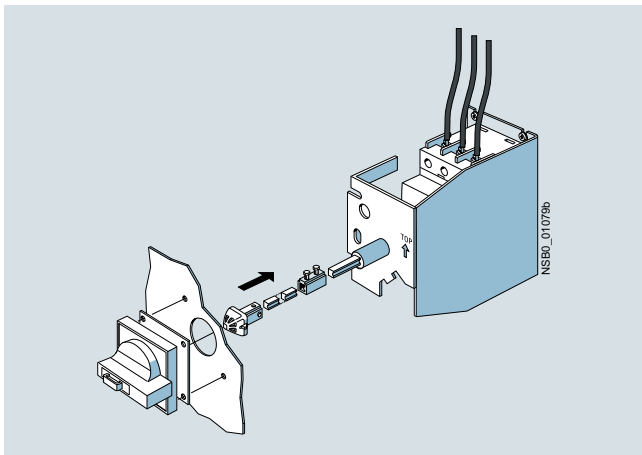
Overview

Door-coupling rotary operating mechanisms

Motor starter protectors/circuit breakers with a rotary operating mechanism can be mounted in a control cabinet and operated externally by means of a door-coupling rotary operating mechanism. When the cabinet door with motor starter protector/circuit breaker is closed, the operating mechanism is coupled. When the motor starter protector/circuit breaker closes, the coupling is locked which prevents the door from being opened unintentionally. This interlock can be defeated by the maintenance personnel. In the OPEN position, the rotary operating mechanism can be secured against reclosing with up to three padlocks. Inadvertent opening of the door is not possible in this case either.



SIRIUS 3RV2926-0K door-coupling rotary operating mechanism



SIRIUS 3RV2926-2B door-coupling rotary operating mechanism for arduous conditions

Remote motorized operating mechanism

3RV motor starter protectors are manually operated switching devices. They automatically trip in case of an overload or short circuit. Intentional remote-controlled tripping is possible by means of a shunt release or an undervoltage release. Reclosing is only possible directly at the motor starter protector/circuit breaker.

The remote motorized operating mechanism allows the motor starter protectors/circuit breakers to be opened and closed by electrical commands. This enables a load or an installation to be isolated from the network or reconnected to it from an operator panel.

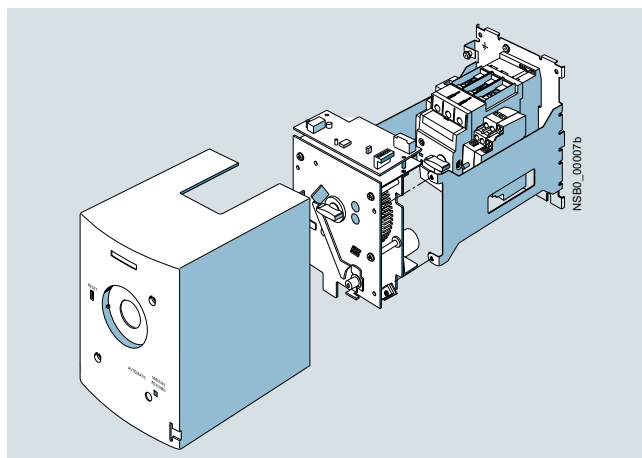
If the motor starter protector/circuit breaker is tripped as a result of overload or short circuit, it will be in the tripped position. For reclosing, the remote motorized operating mechanism must first be set manually or electrically to the 0 position (electrically by means of the Open command). Then it can be reclosed.

The remote motorized operating mechanism is available for motor starter protectors/circuit breakers in size S3 for the control voltages of 230 V AC. The motor starter protector/circuit breaker is fitted into the remote motorized operating mechanism as shown in the drawing.

In the "MANUAL" position, the motor starter protector/circuit breaker in the remote motorized operating mechanism can continue to be switched manually on site. In the "AUTOMATIC" position, the motor starter protector/circuit breaker is switched by means of electrical commands. The switching command must be applied for a minimum of 100 ms. The remote motorized operating mechanism closes the motor starter protector after a maximum of 1 s. On voltage failure during the switching operation it is ensured that the motor starter protector/circuit breaker remains in the "OPEN" or "CLOSED" position. In the "MANUAL" and "OFF" position, the remote motorized operating mechanism can be locked with a padlock.

RESET function

The RESET button on the motorized operating mechanism serves to reset any 3RV2921-1M signaling switch that might be installed.



SIRIUS 3RV1946-3AP0 remote motorized operating mechanism

Motor Starter Protectors/Circuit Breakers

SIRIUS 3RV2 Motor Starter Protectors/Circuit Breakers

Accessories

Rotary operating mechanisms

Technical specifications

Remote motorized operating mechanisms		
Type		3RV1946-3AP0
Max. power consumption		
• At $U_s = 230$ V AC	VA	170
Operating range		0.85 ... 1.1 x U_s
Minimum command duration at U_s	s	0.1
Max. command duration		Unlimited (uninterrupted operation)
Max. total make/break time, remote-controlled	s	2
Ready to reclose after approx.	s	2.5
Switching frequency	1/h	25
Internal back-up fuse		
• 230 V AC	A	0.8
Connection type of control cables		Plug-in connectors with screw terminals
Shock resistance acc. to IEC 60068-2-27	g/ms	25/11 (square and sine pulse)

Selection and ordering data

Version	Color of actuator	Version of extension shaft	For motor starter protectors/circuit breakers	SD	Article No.	Price per PU	PU (UNIT, SET, M)	PS*	PG
		mm	Size	d					

Door-coupling rotary operating mechanisms



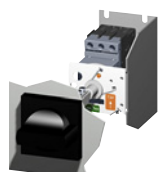
3RV2926-0B

Door-coupling rotary operating mechanisms consisting of an actuator, a coupling driver and a 130/330 mm long extension shaft (6 mm x 6 mm)

Designed for degree of protection IP64; the door locking device prevents accidental opening of the control cabinet door when the switch is set to ON. The OFF position can be locked with up to three padlocks.

Door-coupling rotary operating mechanisms	Black	130	S00 ¹⁾ ... S3	▶	3RV2926-0B		1	1 unit	41E
		330	S00 ¹⁾ ... S3	▶	3RV2926-0K		1	1 unit	41E
EMERGENCY STOP door-coupling rotary operating mechanisms	Red/yellow	130	S00 ¹⁾ ... S3	▶	3RV2926-0C		1	1 unit	41E
		330	S00 ¹⁾ ... S3	▶	3RV2926-0L		1	1 unit	41E

Door-coupling rotary operating mechanisms for arduous conditions



3RV2926-2B

The door-coupling rotary operating mechanisms consist of an actuator, a coupling driver, an extension shaft of 300 mm in length (8 mm x 8 mm), a spacer and two metal brackets into which the motor starter protector/circuit breaker is inserted.

The door-coupling rotary operating mechanisms are designed to degree of protection IP65. The door interlocking reliably prevents opening of the control cabinet door in the ON position of the motor starter protector/circuit breaker. The OFF position can be locked with up to three padlocks.

Laterally mountable auxiliary releases and two-pole auxiliary switches can be used.

The door-coupling rotary operating mechanisms thus meet the requirements for isolating functions according to IEC 60947-2.

Door-coupling rotary operating mechanisms	Gray	300	S00 ¹⁾ , S0	▶	3RV2926-2B		1	1 unit	41E
			S2	▶	3RV2936-2B		1	1 unit	41E
			S3	▶	3RV2946-2B		1	1 unit	41E
EMERGENCY STOP door-coupling rotary operating mechanisms	Red/yellow	300	S00 ¹⁾ , S0	▶	3RV2926-2C		1	1 unit	41E
			S2	2	3RV2936-2C		1	1 unit	41E
			S3	▶	3RV2946-2C		1	1 unit	41E

3RV2936-2C

¹⁾ Not for 3RV1011.

Version	Rated control supply voltage U_s	For motor starter protectors/circuit breakers	SD	Article No.	Price per PU	PU (UNIT, SET, M)	PS*	PG
		Size						

Remote motorized operating mechanisms





3RV1946-3AP0


Remote motorized operating mechanisms	50/60 Hz, 230 V AC	S3	X	3RV1946-3AP0		1	1 unit	41E
--	--------------------	----	---	---------------------	--	---	--------	-----

Load Feeders and Motor Starters for Use in the Control Cabinet

SIRIUS 3RA6 Compact Starters

Accessories

Version	SD	Article No.	Price per PU	PU (UNIT, SET, M)	PS*	PG
	d					
Busbar adapters for 60 mm systems						
 <p>8US1211-1NS10</p>	<p>For flat copper profiles according to DIN 46433 Width: 12 ... 30 mm Thickness: 4 ... 5 mm or 10 mm</p>	2	8US1211-1NS10	1	1 unit	140
Device holders for lateral mounting alongside the busbar adapter for 60 mm systems						
 <p>8US1250-1AA10</p>	<p>Required in addition to the busbar adapter for mounting a reversing starter</p>	2	8US1250-1AA10	1	1 unit	140

Version	Color of actuator	Version of extension shaft	SD	Article No.	Price per PU	PU (UNIT, SET, M)	PS*	PG
		mm	d					
Door-coupling rotary operating mechanisms for operating the compact starter with closed control cabinet doors								
 <p>3RV2926-0B</p>	<p>The door-coupling rotary operating mechanisms consist of a knob, a coupling driver and a 130 mm long extension shaft (6 mm x 6 mm). The door-coupling rotary operating mechanisms are designed to degree of protection IP64. The door interlocking prevents accidental opening of the control cabinet door in the ON position of the motor starter protector. The OFF position can be locked with up to 3 padlocks.</p>							
Door-coupling rotary operating mechanisms	Black	130	►	3RV2926-0B		1	1 unit	41E
EMERGENCY STOP door-coupling rotary operating mechanisms	Red/yellow	130	►	3RV2926-0C		1	1 unit	41E