

# Motor Starter Protectors/Circuit Breakers

## SIRIUS 3RV2 Motor Starter Protectors/Circuit Breakers

### 3RV29 infeed system

#### Technical specifications

##### More information

Manual, see <https://support.industry.siemens.com/cs/ww/en/view/60279172>

##### General data

<b>Type</b>					<b>3RV29.7</b>
Size					S00, S0
<b>Standards</b>					
• IEC 60947-2					✓
• IEC 60947-4-1					✓
• UL 508/UL 60947-4-1					✓
<b>Rated current <math>I_n</math></b>	A				63
<b>Permissible rated current at inside temperature of control cabinet</b>					
Motor starter protectors	Size	Rated current	Inside temperature of control cabinet		
• 3RV2.11	S00	... 14 A	60 °C	%	100
		> 14 ... 16 A	40 °C	%	100
			60 °C	%	87
• 3RV2.21	S0	... 16 A	60 °C	%	100
		> 16 ... 25 A	40 °C	%	100
			60 °C	%	87
		> 25 ... 32 A	40 °C	%	87
<b>Permissible ambient temperature</b>					
• Storage/transport	°C				-50 ... +80
• Operation	°C				-20 ... +60
<b>Rated operational voltage <math>U_e</math></b>					
• Acc. to IEC	10% overvoltage	V AC		500	
	5% overvoltage	V AC		525	
• Acc. to UL/CSA	V AC		600		
<b>Rated frequency</b>	Hz				50/60
<b>Rated impulse withstand voltage <math>U_{imp}</math></b>	kV				6
<b>Short-circuit strength</b>	corresponds to the mounted motor starter protector or load feeder				
<b>Degree of protection</b> acc. to IEC 60529	IP20 (In the terminal compartment of the infeed without connected IP00 conductor)				
<b>Touch protection</b> acc. to IEC 60529	Finger-safe				

##### Conductor cross-sections

Type		Three-phase busbar with infeed 3RV2917-1A, 3RV2917-1E	Terminal block 3RV2917-5D	Terminal block for device infeed 3RV2917-5FA00
<b>Conductor cross-sections (min./max.)</b>				
• Solid or stranded	mm <sup>2</sup>	4 ... 25	1.5 ... 6	1 ... 10
• Finely stranded with end sleeve	mm <sup>2</sup>	4 ... 25	1.5 ... 4	1 ... 6
• Finely stranded without end sleeve	mm <sup>2</sup>	6 ... 25	1.5 ... 6	--
• AWG cables	AWG	10 ... 3	15 ... 10	18 ... 8

-- No

## Motor Starter Protectors/Circuit Breakers

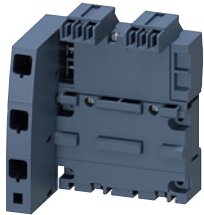
### SIRIUS 3RV2 Motor Starter Protectors/Circuit Breakers

3RV29 infeed system

#### Selection and ordering data

Type	Version	For 3RV20, 3RV23, 3RV24 motor starter protectors	SD	Article No.	Price per PU	PU (UNIT, SET, M)	PS*	PG
		Size	d					

#### Three-phase busbars with infeed



3RV2917-1A

#### Three-phase busbars with infeed

Incl. 3RV2917-6A end cover

- For 2 motor starter protectors with screw or spring-type terminals
- With infeed on the left
  - With infeed on the right

S00, S0  
S00, S0

2  
2

**3RV2917-1A**  
**3RV2917-1E**

1  
1

1 unit  
1 unit

41E  
41E

#### Three-phase busbars for system expansion



3RV2917-4A

#### Three-phase busbars for system expansion

Incl. 3RV2917-5BA00 expansion plug

- For motor starter protectors with screw or spring-type terminals
- For 2 motor starter protectors
  - For 3 motor starter protectors

S00, S0  
S00, S0

2  
2

**3RV2917-4A**  
**3RV2917-4B**

1  
1

1 unit  
1 unit

41E  
41E

#### Plug-in connectors



3RV2917-5AA00

#### Plug-in connectors

To make contact with the motor starter protectors

- For spring-type terminals
- Single-unit packaging
- Multi-unit packaging

S00<sup>1)3)</sup>  
S0<sup>2)</sup>

2  
2

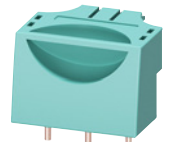
**Spring-type terminals**  
**3RV2917-5AA00**  
**3RV2927-5AA00**  
**3RV2917-5A**  
**3RV2927-5A**



1  
1  
1  
1

1 unit  
1 unit  
10 units  
10 units

41E  
41E  
41E  
41E



3RV2917-5CA00

- For screw terminals
- Single-unit packaging
- Multi-unit packaging

S00<sup>1)3)</sup>  
S0<sup>2)</sup>

2  
2

**Screw terminals**  
**3RV2917-5CA00**  
**3RV1927-5AA00**  
**3RV2917-5C**  
**3RV1927-5A**



1  
1  
1  
1

1 unit  
1 unit  
10 units  
10 units

41E  
41E  
41E  
41E

<sup>1)</sup>  $I > 14$  A, please note derating.

<sup>2)</sup>  $I > 16$  A, please note derating.

<sup>3)</sup> Not for 3RV1011.

Type	Version	For contactors	SD	Article No.	Price per PU	PU (UNIT, SET, M)	PS*	PG
		Size	d					

#### Contactors bases



3RV2927-7AA00

#### Contactors bases

For mounting direct-on-line or reversing starters

- Single-unit packaging
- S00<sup>1)</sup>  
S00<sup>1)</sup>, S0
- 2  
2

**3RV2917-7AA00**  
**3RV2927-7AA00**

1  
1

1 unit  
1 unit

41E  
41E

<sup>1)</sup> Not for 3RV1011.