

SINAMICS G110M distributed inverters

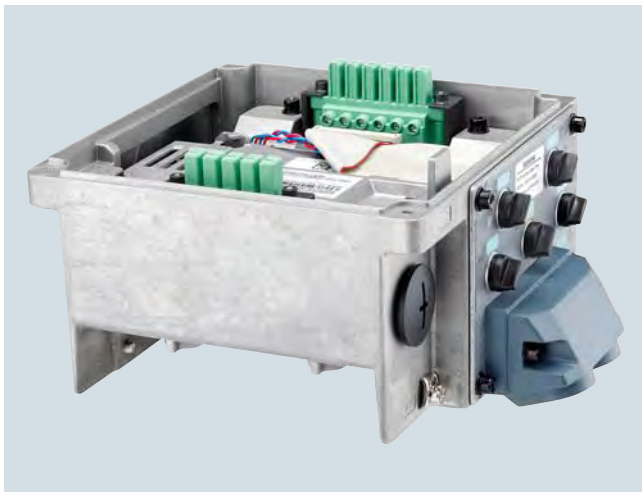
0.37 kW to 4 kW (0.5 hp to 5 hp)

CU240M Control Units

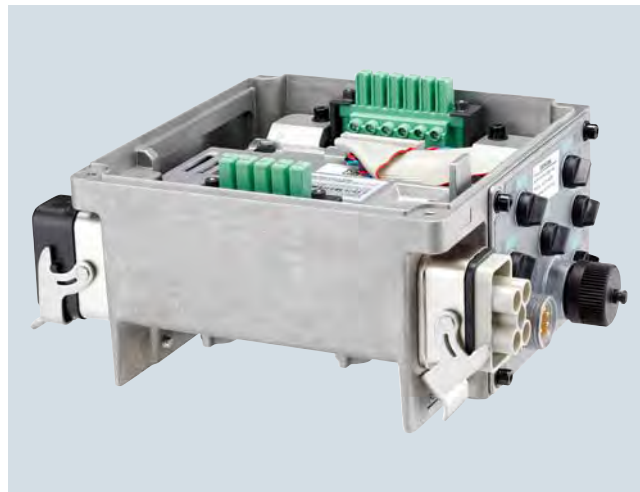
Overview

The Control Unit performs closed-loop control functions for the inverter. In addition to the primary closed-loop control function, it has many additional functions that can be adapted to the particular application through parameterization.

The Control Units are available in two versions for connection to 400 V 3 AC and 24 V DC – screw-type or plug-in. The version in USS fieldbus communication is only available as screw-type. The differences between the screw-type and plug-in versions are presented in the following pictures:



SINAMICS G110M CU240M PN Control Unit cable gland



SINAMICS G110M CU240M PN Control Unit plug-in

Several Control Units are available in different versions:

Control Unit		Communications via	Connection system	For motor shaft heights
CU240M Control Unit, screw-type	CU240M	USS, Modbus RTU	Screw-type version	71, 80/90, 100/112
CU240M AS-i Control Unit, screw-type	CU240M AS-i	AS-Interface	Screw-type version	71, 80/90, 100/112
CU240M AS-i Control Unit, plug-in	CU240M AS-i	AS-Interface	Plug-in version	71, 80/90, 100/112
CU240M DP Control Unit, screw-type	CU240M DP	PROFIBUS	Screw-type version	71, 80/90, 100/112
CU240M DP Control Unit, plug-in	CU240M DP	PROFIBUS	Plug-in version	71, 80/90, 100/112
CU240M PN Control Unit, screw-type	CU240M PN	PROFINET, EtherNet/IP	Screw-type version	71, 80/90, 100/112
CU240M PN Control Unit, plug-in	CU240M PN	PROFINET, EtherNet/IP	Plug-in version	71, 80/90, 100/112

Safety Integrated functions

The safety function "Safe Torque Off" (STO ¹⁾) (certified according to IEC 61508 SIL 2 and EN ISO 13849-1 PL d and Category 3) is already integrated into the basic versions of the CU240M series (CU240M, CU240M DP and CU240M PN). It prevents active movement of the drive. It can be activated either over PROFIsafe or over the safety input.

Existing systems in particular can be simply updated with safety technology without the need to change the motor or mechanical system.

¹⁾ Available for firmware version V4.7 or higher

SINAMICS G110M distributed inverters

0.37 kW to 4 kW (0.5 hp to 5 hp)

CU240M Control Units

Selection and ordering data

Communication	Digital inputs (number which can be parameterized as fail-safe given below)	Analog inputs (of which can be used optionally as digital input (10 V))	Digital outputs	Safety Integrated functions ¹⁾	Designation of Control Unit	Motor	Control Unit
						Shaft height	Article No.
CU240M – screw-type version							
USS, Modbus RTU	4 (1)	2 (2)	2	STO	CU240M	71	6SL3544-0LB02-1BA0
	4 (1)	2 (2)	2			80/90	6SL3544-0MB02-1BA0
	4 (1)	2 (2)	2			100/112	6SL3544-0NB02-1BA0
CU240M AS-i – screw-type version							
AS-Interface	4 (1)	2 (2)	2	STO	CU240M AS-i	71	6SL3544-0LB02-1MA0
	4 (1)	2 (2)	2			80/90	6SL3544-0MB02-1MA0
	4 (1)	2 (2)	2			100/112	6SL3544-0NB02-1MA0
CU240M AS-i – plug-in version							
AS-Interface	4 (1)	2 (2)	2	STO	CU240M AS-i	71	6SL3544-0TB02-1MA0
	4 (1)	2 (2)	2			80/90	6SL3544-0PB02-1MA0
	4 (1)	2 (2)	2			100/112	6SL3544-0QB02-1MA0
CU240M DP – screw-type version							
PROFIBUS DP	4 (1)	2 (2)	2	STO	CU240M DP	71	6SL3544-0LB02-1PA0
	4 (1)	2 (2)	2			80/90	6SL3544-0MB02-1PA0
	4 (1)	2 (2)	2			100/112	6SL3544-0NB02-1PA0
CU240M DP – plug-in version							
PROFIBUS DP	4 (1)	2 (2)	2	STO	CU240M DP	71	6SL3544-0TB02-1PA0
	4 (1)	2 (2)	2			80/90	6SL3544-0PB02-1PA0
	4 (1)	2 (2)	2			100/112	6SL3544-0QB02-1PA0
CU240M PN – screw-type version							
PROFINET, EtherNet/IP	4 (1)	2 (2)	2	STO	CU240M PN	71	6SL3544-0LB02-1FA0
	4 (1)	2 (2)	2			80/90	6SL3544-0MB02-1FA0
	4 (1)	2 (2)	2			100/112	6SL3544-0NB02-1FA0
CU240M PN – plug-in version							
PROFINET, EtherNet/IP	4 (1)	2 (2)	2	STO	CU240M PN	71	6SL3544-0TB02-1FA0
	4 (1)	2 (2)	2			80/90	6SL3544-0PB02-1FA0
	4 (1)	2 (2)	2			100/112	6SL3544-0QB02-1FA0

For optional memory cards, see section Supplementary system components.

¹⁾ Available for firmware version V4.7 or higher