

Data sheet for three-phase Squirrel-Cage-Motors

Totally Enclosed Fan Cooled (TEFC)



MLFB-Ordering data : 1LE2421-2CB11-2AA3

Client order no. :

Order no. :

Offer no. :

Remarks :

Item no. :

Consignment no. :

Project :

U	Δ/Y	f	P		n	I [A] Load %					NOM. EFF at ... load [%]			Pwr. factor at ... load			Torque		
			HP	[kW]		FL	3/4	1/2	0	Ia/In	Full Load	3/4	1/2	Full Load	3/4	1/2	[lb-ft]	Ta/Tn	Tk/Tn
460	Δ	60Hz	25.0	93.6 %	1800	30.0 A	23.3 A	17.6 A	11.0 A	183.0 A	93.6 %	94.0 %	93.5 %	84.0	80.0	71.0	74.000	180	250
Frame Type: 284T			Wind. Prot: (A) Foot mounted - End shield			Ins. Class: Class F			Motor Prot: (A) Without Protection			NEMA Des: B			S.F. 1.15				
Mtr WT (lbs): 445			Mount: (3) F-1, Standard Floor Mount, T. Box			Temp. Rise: Class B			Amb. Temp: +40C TO -20C @1000m			kVA: G			IP: 55				

Mechanical Data

WK2	Rotor Inertia:	4.3600
	Ext Load Inertia (WK2) Capability:	122.0 lb-ft²
Safe Stall Time	HOT:	24 s
	COLD:	44 s

Typical Noise Data

	SPL:	65 dB(A)					
	SPwRL:	76 dB(A)					
Octave Band Center Frequencies Hertz (Hz)							
	250	500	1000	2000	4000	8000	Hz
SPL@3 feet	51	55	55	62	59	51	

Bearings:

	DE	ODE
Bearing Size:	6310 Z C3 S0	6310 Z C3 S0
Bearing Type:	Ball Bearing	Ball Bearing
AFBMA:	50BC03JP30	50BC03JP30
Ih10 Bearing Life:	Coming Soon	Coming Soon
Allowed Radial Force:	X_0 Coming Soon	X_{max} Coming Soon

Grease

Capacity (oz.):	2.60	2.60
Manufacturer:	Mobil Polyrex EM or equal	
Type:	Polyurea (standard)	

Frame

Frame Material:	cast iron
Paint Finish:	standard (RAL7030)
Color:	RAL 7030

Terminal Box

Terminal box design:	(3) F-1, Standard Floor
T-Box Material:	Coming Soon
Cable Entry:	Coming Soon

Lead Wire Connection

Description	3 PHASE - 3 LEAD - DELTA				
Voltage	L1	L2	L3	Connected together	
----	----	----	----	----	
----	T1	T2	T3	----- Δ	

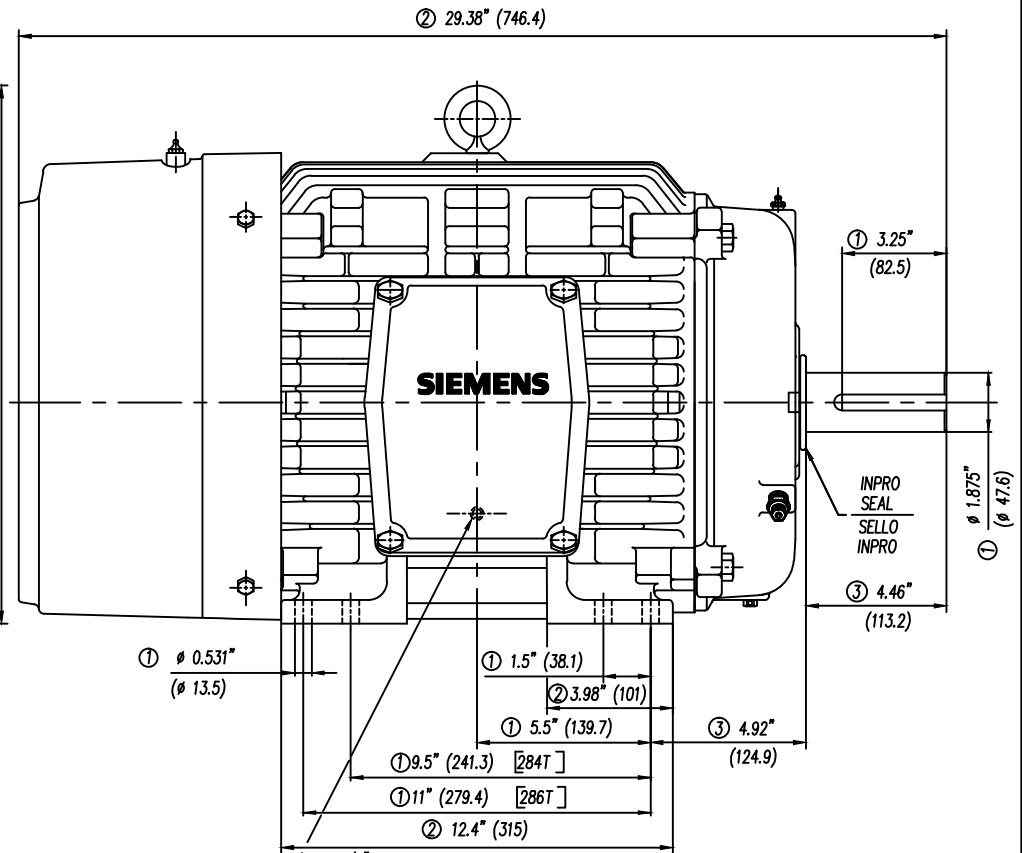
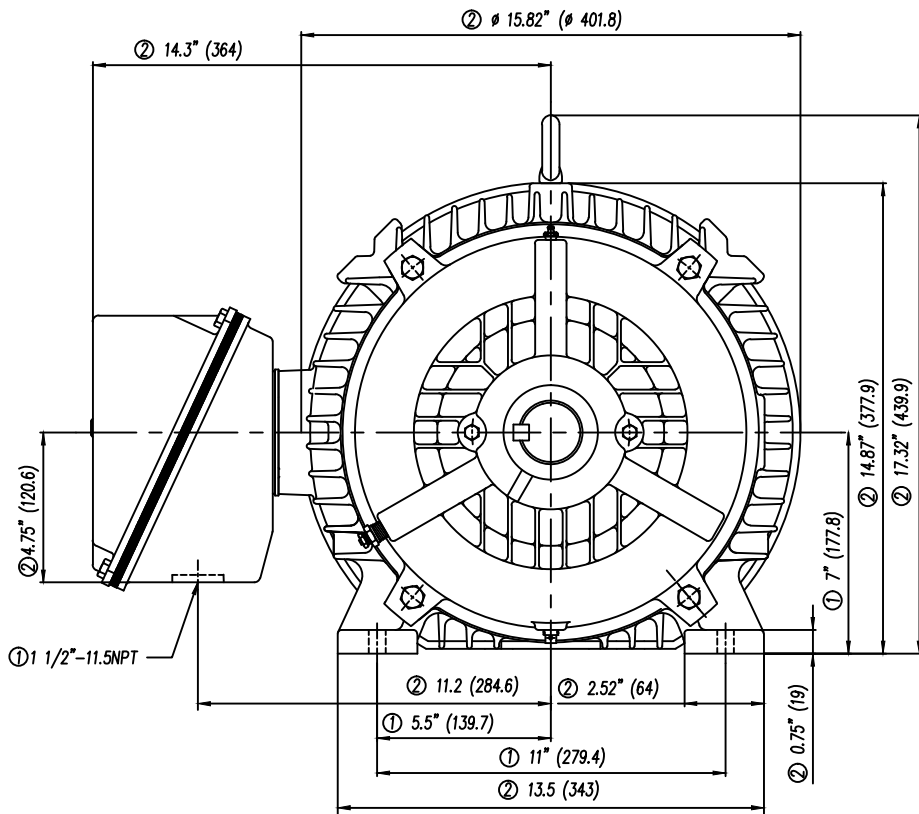
Ventilation Type

Cooling Type	TEFC
Fan Rotation	Bi-Directional

Additional Information

Protection Type:	QTY:	Type:
Space Heaters: without	QTY:	Watts:
VFD Operations:	CT: 20:1	VT: null
Area Classification:	null	
Brake: without		

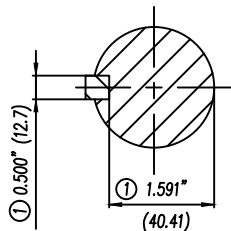
Special design :



- | | |
|---|--|
| ① Tolerances According to NEMA Std. | ① Tolerancias acorde a NEMA Std. |
| ② All these dimensions corresponding to assemblies and castings shall have a tolerance as per DIN standard 1686-GTB 19. | ② Todas estas dimensiones correspondientes a ensambles y fundición en bruto tendrán una tolerancia según DIN 1686-GTB-19 |
| ③ Not According to NEMA Std. | ③ No Acorde a NEMA Std. |

CERTIFIED PRINT/CERTIFICACION

CUSTOMER/CLIENTE						
FOR/ORDEN COMPRA			SOW/ORDEN CLIENTE			
IP	HP	FRAME/MBL	TYPE/TIPO	VOLTS	PH/FAS.	HZ



Keyseat detail
Detalle Cuñero

② 3/8"-16NC Tapped Hole for Grounding Both sides of Frame
Barreno 3/8"-16NC para Tierra, en ambos lados de la Carcasa

Tol. in mm. acc. to/Tol. en mm. según DIN-1686-GTB-19	
Over/desde	to/hasta
---	18
18	30
30	50
50	80
80	120
120	180
180	250
250	315
315	400
400	500
500	630
630	800

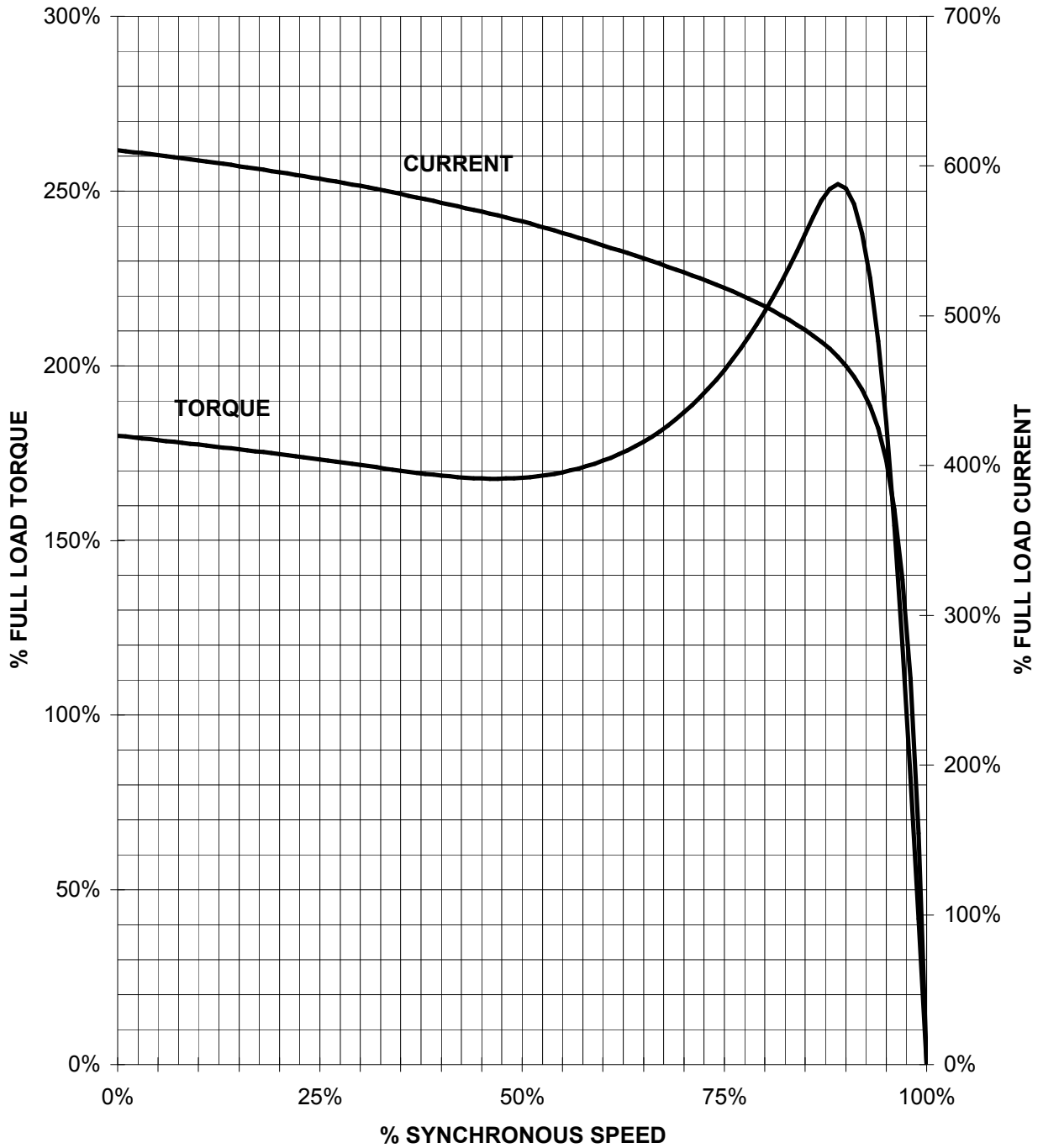
European Projection/Proyeccion Europea	Date/Fecha	Name/Nombre
Modific.	09/01/09	J. Carvajal
Drawn/Elab.	Check/Rev.	Std.Chd./Aut.

NOTE: Changed the type of motor NOTA: Se cambio el tipo de motor	
Outline/Dimensiones	
Type/Tipo: SD100 IEEE mNP 284/286T	Scale/Escala: ---
SIEMENS	
GUADALAJARA FACTORY	
Ref. 3MSE 710 1155	Rep./ 3MSE 710 1227
3MSE 710 1227 a)	
-/-	

SIEMENS INDUSTRY, INC.

HP 25 VOLTS < 600V RPM 1800 TYPE SD100 IEEE841
HZ 60 PHASE 3 FRAME 284T NEMA B

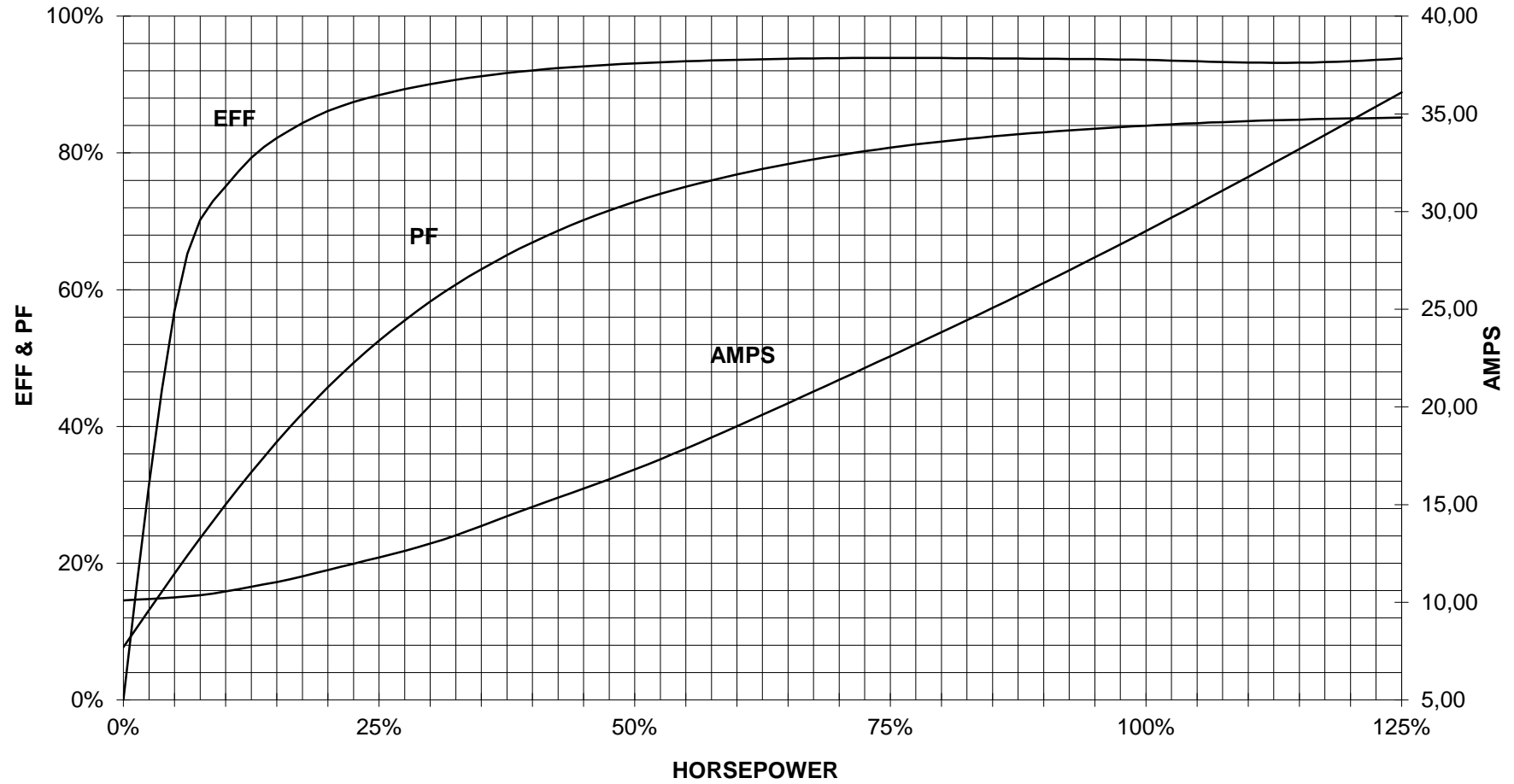
TORQUE & CURRENT VS. SPEED



CUSTOMER: _____ ORDER#: _____

25 HP 1800 RPM 284T FRAME 460 VOLTS 3 PHASE NEMA DESIGN B

SIEMENS INDUSTRY, INC.
PERFORMANCE CURVE
SD100 IEEE841



CUSTOMER: _____ ORDER #: _____

PERFORMANCE BASED ON DESIGN CALCULATIONS. SUBJECT TO CHANGE WITHOUT NOTICE.

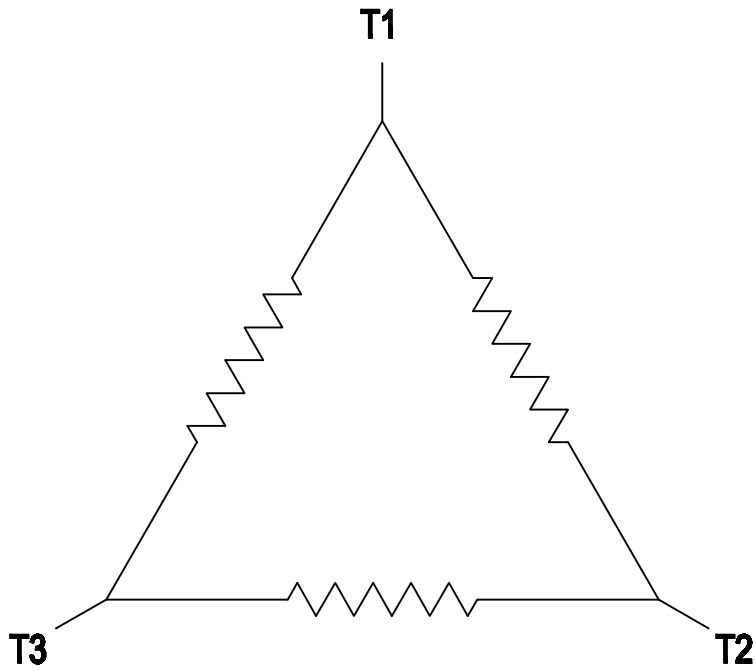
REV. 1

2

1

3 PHASE - 3 LEADS - DELTA

L1	L2	L3	CONN.
T1	T2	T3	△



B

B

A

A

THIS IS A CAD DRAWING
DO NOT MAKE MANUAL CHANGES

01 | 09-27-07

TYPE

-CONFIDENTIAL-

PROPERTY OF

Siemens Energy & Automation, Inc.
Industrial Motor Division - Little Rock, AR

FRAME

HP

NAME

WIRING DIAGRAM

VOLTS

RPM

HZ

PH

3

Customer

PO #

SO #

DRAWN 9.24.07 DATE JRH

CHECKED DATE

APP DATE

SHEET

1 OF 1

Sim. To

PART NO.

51-382-114-504

A

2

1