


30 mm Heavy Duty, Watertight/Oiltight, Class 52

Pushbutton complete units

Features

- Octagonal Mounting Nuts
- Meets Type 1, 3, 3R, 4, 4X, 12, 13 and Automotive Standards
- Heavy Duty Rated NEMA A600/P600 Contacts
-  Positively Driven Contacts
- Positive Indexing Selectors
- Bifurcated Movable Contacts
- Attractive Chrome Plating
- Boots Not Required for Type 4
- UL Listed File # E22655
- CSA Certified File # LR6535
- Touchsafe Terminals
- Hazardous Location CL1, DIV2 Contact Blocks
- Hazardous Location CL1, DIV2 Light Modules

Application

Oil tight pilot controls and accessories are designed to provide long, trouble free service in the most demanding industrial applications. These controls are oil and dust tight and meet Type 3, 4, 4X, 12 and 13 specifications.

Rugged

Industrial control operators are durable one piece castings. Heavy duty plastic buttons resist oils and corrosion. Silver contacts carry heavy duty ratings.

Flexible

Accessories modify standard push buttons, selector switches and pilot lights. Building block construction of contact blocks makes possible many circuitry combinations.

Industrial Appearance

Pilot controls add luster to panels. Chrome plating covers exposed metal parts.

Push Button Operators


The Operator Base consists of a durable, one piece casting equipped with a heavy duty actuator with a stainless steel spring, a neoprene actuator sealing ring to prevent oil and dust from penetrating to the contact blocks, a neoprene gasket to seal operator mounting hole and a chrome plated lock nut.

Mushroom Head Push Button Operators

The Mushroom Head base construction is identical to the push button base. The actuator is molded of high impact material for either a 1 5/8 inch or 2 1/2 inch diameter molded head.

E-STOP Mushroom Head Operators according to EN 60947-5-5 Cat. No. 52BP, 52BR, 52PP, and 52PR, 2 Position, Twist-To-Release & 2 Position, Push Pull Maintained operators provided with red operating heads and 52BJK contact blocks meet the requirements of EN 60947-5-5 for Electrical Emergency Stop Device With Mechanical Latching Function (e-stop).

Contact Blocks

Standard Contact Blocks have double break bifurcated silver contacts as standard. Versions with gold flashing are available for improved contact reliability. Contact blocks are heavy duty rated NEMA A600 and suitable for applications down to 5V/1MA solid state outputs. 52BAJ and 52BJK versions offers  Positive Opening Contacts according to IEC 60947-5-1, Appendix K. Molded bodies and pushers resist arcing and tracking. All units have stainless steel springs that resist corrosion and provide strong contact pressure. Captive mounting screws speed panel assembly. New HL Series Contact Blocks are also rated for Hazardous Locations Class 1, Division 2.

Push Pull Operators

Push Pull Operators combine two or three functions in one unit. The maintained operator has two positions, typically pull to start, push to stop. The momentary operator with three positions provides spring return from both pull and push positions. In addition, a three position push maintained, pull momentary operator is available. The actuator come is 1 3/4 inch or 2 1/2 inch diameter and is available in an illuminated version.

2 Button Maintained Operator

Maintained Push Buttons consist of two push buttons and a latching assembly. When actuated the button remains depressed and is freed only by the release operator to which it is linked. The button assembly adjusts for mounting from a 1 13/16 inch to a 2 5/8 inch center.

Transformer Type Pilot Lights

Transformer Type Pilot Lights are available with a 120, 240, 480 or 600 Volt primary (50/60 Hertz) and a separate secondary winding which supplies reduced voltage to a miniature bayonet base 6 Volt lamp. These units are suitable for applications where vibration is present and long bulb life is desirable.

Full Voltage Type Pilot Lights

Full Voltage Pilot Lights are available for 6, 12, 24 and 120 Volt AC and DC applications.

Electrical Ratings

NEMA AC Ratings 50/60Hz

NEMA A600 10 Continuous Amps

Volts	Make	Break
120	60	6
240	30	3
480	15	1.5
600	12	1.2
VA	7200	720

Ordering Information

- Accessories: [pages 10/208 – 10/212](#)
- Selector Position and Contact Operation: [page 10/206 – 10/207](#).
- Legend Plates: [page 10/221](#).
- Enclosures: [page 10/223](#).
- Technical Specifications: [page 10/222](#).

Resistor Type Pilot Lights

Resistor Type Pilot Lights are available for 240 Volt AC and DC applications. The 240 Volt pilot light is supplied with a 120 Volt lamp and a voltage dropping resistor.

LED Type Pilot Lights

LED's (light emitting diodes) can be used in pilot lights instead of incandescent bulbs because of their long life (up to 10 years), resistance to vibration and ambient sensitivity. Clusted LED options are available for standard pilot lights only. Cluster LED options are not available on Push to test Pilot Lights, Illuminated Pushbuttons, Push-pull, or Twist-to-Release Operators.

Integrated LED Module Type Pilot Lights

The integrated LED module is available for 24, 120, 240 and 24-240V. LED modules are vibration resistant and have a long life (up to 10 years).

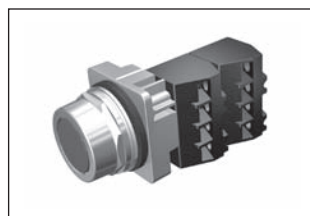
Selector Operators

Selector Operators have positive action indexing. Operators are available with either a short or long lever. The molded black lever is designed to accept a color insert. A white insert is provided as standard. Each operator is equipped with a cam to actuate plungers of contact blocks assembled behind the operator. Two, three and four position operators are available with seven different cams.

Lever color inserts are available in 8 colors.



Indicator Light



Push Button



Selector Switch



Selector Push Button

30mm Water, Oil Tight & Corrosion Resistant – Class 52

Indicator Light

Selection Guide

Indicator Light



Plastic Lens



Glass Lens

Part Number	52	<u> </u>	<u> </u>	<u> </u>	<u> </u>	<u> </u>	<u> </u>
		a	L b	c	d	e	f

a	Code	Finish
	P	Chrome-Command 52
	B	Epoxy Coated-Black Max

b	Code	Type
	L	Indicator Light

c	Code	Style
	4	Plastic Lens
	5	Glass Lens

d	Code	Operation	
		Full Voltage ^{1 4} (AC/DC)	
		Incandescent	LED ²
	B	6-8V	6V
	C	12-13V	—
	D	24-28V	24-28V
	E	120V	120V
		Transformer ^{1 4}	
	G	120V AC	
	H	240V AC	
	J	480V AC	
	K	600V AC	
	T	277V AC	
		Integrated LED Light Module ⁴	
	L	6-24V AC/DC	
	U	24-240V AC/DC	

e	Code	Color
	2	Red
	3	Green
	5	Blue
	7	All Colors
	9	Amber
	A	Clear
	B	White
	N	No Lens

f	Code	Bulb Type
	Blank	Incandescent
	XB	LED
	XY	Super-Bright LED ³

1 Default bulb type is incandescent. For LED options, append field f. LED option not available on units sold "No Lens".

2 LED voltages apply to table f option code XB and XY.

3 Not available in 120V or 240V.

4 New for January 2021, Light Modules are dual rated for UL Ordinary Location and Hazardous Location CL1, DIV2 Ratings.

Selection Tables

Indicator Light

Type	Lamp Type	Voltage	Color	Plastic Lens		
				Chrome	Black Max	
Full Voltage (AC/DC)	LED	24V	Red	52PL4D2XB	52BL4D2XB	
			Green	52PL4D3XB	52BL4D3XB	
			Blue	52PL4D5XB	52BL4D5XB	
			Amber	52PL4D9XB	52BL4D9XB	
			White	52PL4DBXB	52BL4DBXB	
		120V	Red	52PL4E2XB	52BL4E2XB	
			Green	52PL4E3XB	52BL4E3XB	
			Amber	52PL4E9XB	52BL4E9XB	
	Incandescent	24V	Clear	52PL4EAXB	52BL4EAXB	
			White	52PL4EBXB	52BL4EBXB	
			Red	52PL4D2	52BL4D2	
			Green	52PL4D3	52BL4D3	
			Blue	52PL4D5	52BL4D5	
		120V	Amber	52PL4D9	52BL4D9	
			White	52PL4DB	52BL4DB	
			No Lens	52PL4DN	52BL4DN	
Transformer (AC)	LED	120V	Red	52PL4G2XB	52BL4G2XB	
			Green	52PL4G3XB	52BL4G3XB	
			Amber	52PL4G9XB	52BL4G9XB	
			White	52PL4GBXB	52BL4GBXB	
		480V	Red	52PL4J2XB	52BL4J2XB	
			Green	52PL4J3XB	52BL4J3XB	
			White	52PL4JBXB	52BL4JBXB	
			No Lens	52PL4GN	52BL4GN	
	Incandescent	120V	Red	52PL4G2	52BL4G2	
			Green	52PL4G3	52BL4G3	
			Amber	52PL4G9	52BL4G9	
			White	52PL4GB	52BL4GB	
		240V	Red	52PL4H2	52BL4H2	
			Green	52PL4H3	52BL4H3	
			480V	Red	52PL4J2	52BL4J2
				Green	52PL4J3	52BL4J3
Amber	52PL4J9	52BL4J9				

Readily available items are in **bold**.
This is a small representation of stocked items.