

Push Button Units and Indicator Lights

contents

16 mm mounting diameter, molded-plastic



3SB2

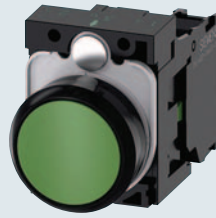
Page

Selection and ordering data

- 3SB22 complete units 10/7
- 3SB20 pushbuttons and lens assemblies 10/9
- 3SB2 holders, lampholders and contact blocks 10/11
- 3SB29 inserts, legend plates, and accessories 10/13

- Introduction 10/4
- Technical specifications 10/5
- Dimension drawings 10/20

22 mm mounting diameter, plastic black



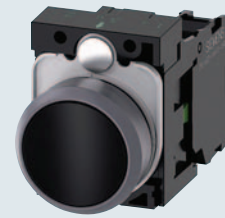
SIRIUS ACT – 3SU1

Page

Selection and ordering data

- Complete units 10/39
- Compact units 10/46
- Actuating and signaling Elements 10/49
- Accessories 10/110 – 10/120; 10/138 – 10/161

22 mm mounting diameter, plastic with metal matte front ring



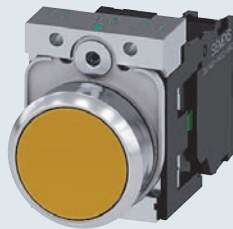
SIRIUS 3SB3, plastic round

Page

Selection and ordering data

- Complete units 10/61
- Compact units 10/68
- Actuating and signaling Elements 10/70
- Accessories 10/110 – 10/120; 10/138 – 10/161

22 mm mounting diameter, metal shiny



SIRIUS ACT – 3SU1

Page

Selection and ordering data

- Complete units 10/82
- Compact units 10/89
- Actuating and signaling Elements 10/92
- Accessories 10/110 – 10/120; 10/138 – 10/161

30 mm mounting diameter, metal matte



SIRIUS ACT – 3SU1

Page

Selection and ordering data

- Actuating and signaling Elements 10/103
- Accessories 10/133 – 10/136; 10/162 – 10/164

22mm enclosures and communication devices



SIRIUS ACT – 3SU1

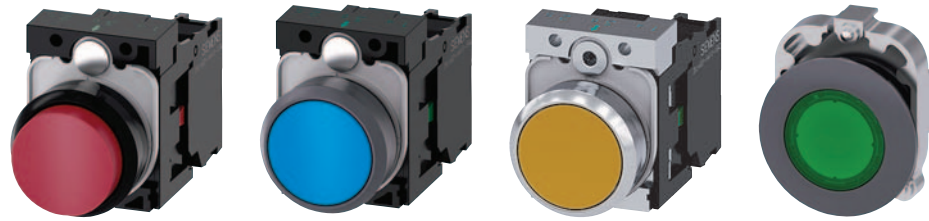
Page

Selection and ordering data

- Empty enclosures 10/123
- Complete enclosure 10/124
- AS-Interface 10/130
- Accessories 10/133 – 10/136; 10/162 – 10/164
- Two-hand operation 10/137

SIRUS ACT 3SU Series

Overview



	3SU1.0	3SU1.3	3SU1.5	3SU1.6
Pushbuttons and indicator lights				
Designs				
Nominal diameter	22 mm	22 mm	22 mm	30 mm
Version	Plastic	Plastic with metal front ring, matte	Metal, shiny	Metal, matte, flat
Actuators				
Pushbuttons	✓	✓	✓	✓
Illuminated pushbuttons	✓	✓	✓	✓
Mushroom pushbuttons	✓	✓	✓	--
EMERGENCY STOP mushroom pushbuttons	✓	✓	✓	--
Selector switches	✓	✓	✓	✓
Key-operated switches	✓	✓	✓	✓
Special actuators				
Twin pushbuttons	✓	✓	✓	--
Coordinate switches	✓	✓	✓	--
Toggle switches	✓	✓	✓	--
Sensor switches	✓	✓	--	--
ID key-operated switches	✓	✓	--	--
Pushbuttons with extended stroke	✓	✓	✓	--
Potentiometers	✓	✓	✓	--
Indicators				
Indicator lights	✓	✓	✓	✓
Acoustic signaling devices	✓	✓	✓	--
Contact modules				
Single-pole	✓	✓	✓	✓
Two-pole	✓	✓	✓	✓
LED modules				
With integrated LED	✓	✓	✓	✓
Connections				
Screw terminals	✓	✓	✓	✓
Spring-type terminals	✓	✓	✓	✓
Solder pins	✓	✓	✓	✓
AS-Interface	✓	✓	✓	✓
IO-Link	✓	✓	✓	✓

- ✓ Standard
- Not available

Note:

Safety characteristics (see Appendix on page 10/166).

SIRIUS ACT 3SU Series

General data

Overview



SIRIUS ACT pushbuttons and indicator lights

SIRIUS ACT – commanding and signaling

SIRIUS ACT is a modular system of pushbuttons and indicator lights for front plate mounting and rear-mounted electrical modules. Thanks to SIRIUS ACT with PROFINET,

Extensive portfolio

- Customized variants, e.g. special tumbler arrangements, labeling, equipped enclosures
- Communication-enabled thanks to direct interfacing to AS-Interface, IO-Link or PROFINET

Diverse possible applications

- National and international approvals
- Many trade approvals
- Short delivery times thanks to global availability

Standards

- IEC/EN 60947-1
- IEC/EN 60947-5-1
- IEC/EN 60947-5-5 for EMERGENCY STOP devices

More information

Homepage, see www.siemens.com/sirius-act
 Industry Mall, see www.siemens.com/product?3SU1
 Configurator, see www.siemens.com/sirius-act/configurator
 Conversion tool, see www.siemens.com/sirius/conversion-tool
 Manual, see <https://support.industry.siemens.com/cs/ww/en/view/107542462>
 TIA Portal, see www.siemens.com/TIA

pushbuttons and indicator lights can be connected directly via PROFINET to the controller and HMI devices – including with safety functions. Engineering and commissioning are simplified no end by the TIA Portal.

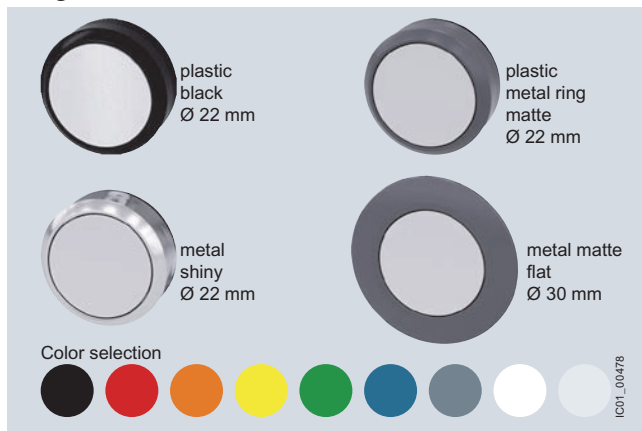
Configurator



- Fast, simple selection by intuitive navigation through clearly-organized menus using drag & drop
- Image preview of selected components
- Inscription of pushbuttons and labeling plates using the interactive inscription tool
- Once created, a configuration can be ordered as often as required using the customer-specific article number and the CIN (Configuration Identification Number)
- Everything at a glance: Product data sheets, certificates, dimensional drawings, list prices, inscription tool

Benefits

Design



SIRIUS ACT is available in four design lines.

Ruggedness



- Degree of protection IP66, IP67, IP69 (IP69K)

IP66

6 = Protection against the ingress of dust

6 = Protection against powerful splash-water

IP67

6 = Protection against the ingress of dust

7 = Protection against temporary immersion

IP69 (IP69K)

6 = Protection against the ingress of dust

9/9K = Protection against water in high-pressure cleaning (approx. 80 bar) and high water jet temperatures (approx. 80 °C)

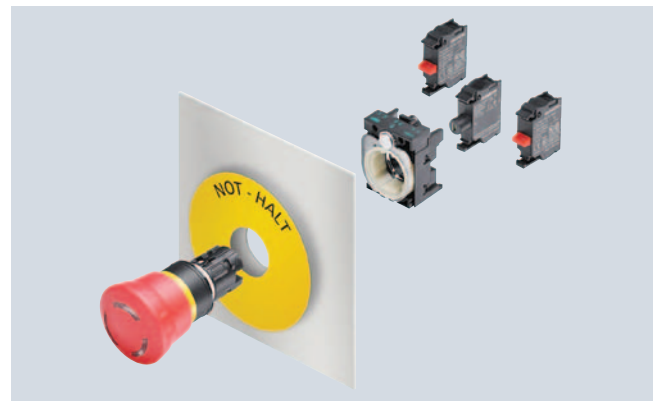
- Service life of 100 000 hours thanks to use of LEDs
- Media resistance (chemicals) thanks to solid stainless steel and high-grade plastics
- Mechanical endurance of 10×10^6 switching cycles
- Suitable for use in extreme environments
- Reliable, friction-locked fixing with just one screw
- Design stability according to use
- Simple geometry for mounting holes

Communication



- Direct connection of the enclosure to AS-Interface or IO-Link
- Direct connection in the control cabinet to PROFINET, IO-Link or AS-Interface
- Can be integrated easily via the TIA Portal

Easy handling

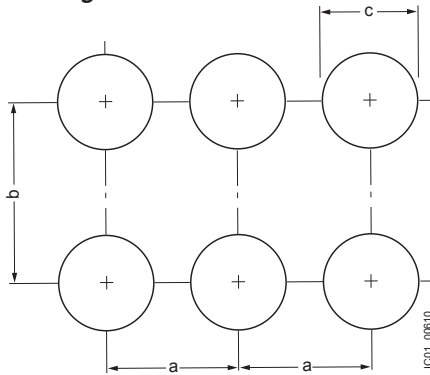


- Self-holding function of the actuator when mounting
- Twist prevention integrated into patented holder design
- Stackable contact modules
- Self-explanatory and fast installation using one hand
- Components can be mounted with holder removed
- No special tools required, simple size 2 screwdriver (cross-tip DIN ISO 87641PZD1, flat-head DIN ISO 2380-1 A/B 1x4.5) is sufficient

SIRIUS ACT 3SU Series

General data

Mounting dimensions



	Minimum clearance		
	a	b	c
	mm	mm	mm
22 mm, plastic with metal front ring, matte			
3-slot holder	30	40	22.3 ^{+0.4}
4-slot holder	40	40	22.3 ^{+0.4}
30 mm, metal, matte			
3-slot holder	40	45	30.5 ^{+0.5}

Versions

SIRIUS ACT is a modular system of pushbuttons and indicator lights with which customized variants can be configured flexibly.

One command point comprises:

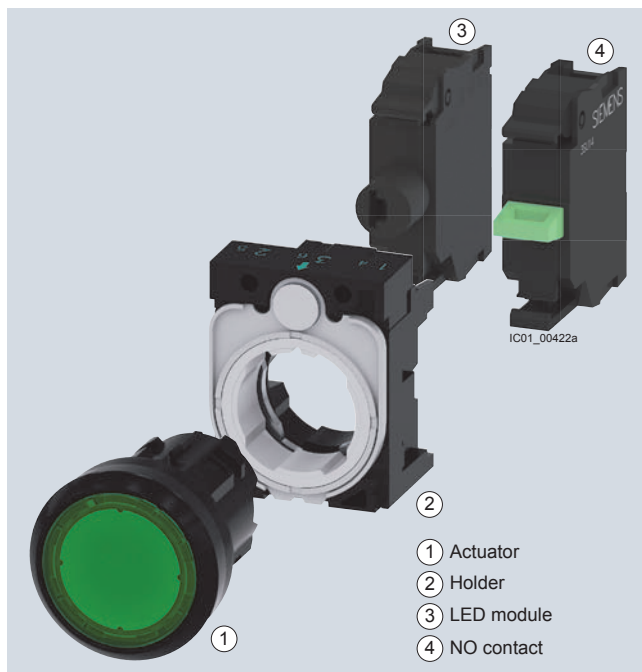
- An actuating or signaling element in front of the control panel
- A holder for securing behind the control panel
- Up to six contact modules and/or one LED module (mounted onto the holder), single-pole contacts can be stacked
- A comprehensive range of accessories for inscription/markings

Complete units

Complete units made up of an actuating or signaling element, holder and contact modules and/or LED modules are offered for the most frequent application cases. The electrical parts are integrated and only have to be wired.

Compact units

Signaling devices, sensor switches, and pushbuttons with extended stroke are available as compact units. The electronic circuitry is already integrated in these devices, i.e. it is not necessary to snap on a contact or LED module.



Complete units	Pages	Compact units	Pages
Plastic, black	10/39	Plastic, black	10/46
Plastic with metal front ring, matte	10/61	Plastic with metal front ring, matte	10/68
Metal, shiny	10/82	Metal, shiny	10/90

SIRIUS ACT 3SU Series

General Data

Enclosures

Product versions		Article number														
SIRIUS ACT pushbuttons and indicator lights		3SU1	<input type="checkbox"/>	<input type="checkbox"/>	<input type="checkbox"/>	-	<input type="checkbox"/>	<input type="checkbox"/>	<input type="checkbox"/>	<input type="checkbox"/>	<input type="checkbox"/>					
Device type	Enclosures	8														
Material (enclosure/front ring)	Plastic, black plastic Metal, shiny metal	0 5														
Number of command points	Command point ... Command points	1 ... 6														
Type of enclosure	Surface-mounting 4-position selector switch and coordinate switch Palm pushbutton Two-hand operation console	0 1 2 3														
Command point	e.g. command point, inscription, module		<input type="checkbox"/>	<input type="checkbox"/>												
Communication capability	Without AS-i						0 1									
Ambient condition	Standard ATEX Zone 21-22: Protection from dust ATEX Zone 1-2: Intrinsic safety						0 1 2									
Mounting/connection of modules	None Front plate mounting, screw terminals Base mounting, screw terminals Front mounting, spring-type terminals Base mounting, spring-type terminals									0 1 2 3 4						
Cable exit from enclosure	None Direct entry of AS-i flat cable at top/on right AS-i insulation piercing method at top/on right										A G H					
Design of enclosure top	Center command point With recess for labeling plate With protective collar 4 additional holes (two-hand operation console) 8 additional premachined breaking points (two-hand operation console)										A B C D E					
Color of enclosure top	Gray Yellow										1 2					
Example		3SU1	8	0	1	-	0	A	A	0	0	-	0	A	A	2

Accessories

Product versions		Article number														
SIRIUS ACT pushbuttons and indicator lights		3SU1	<input type="checkbox"/>	<input type="checkbox"/>	<input type="checkbox"/>	-	<input type="checkbox"/>	<input type="checkbox"/>	<input type="checkbox"/>	<input type="checkbox"/>	<input type="checkbox"/>					
Device type	Accessories	9														
Material	Plastic, black Metal/plastic Metal, shiny Metal, matte	0 3 5 6														
Illumination	Non-illuminated Illuminated	0 1														
Type of accessory (labels, protection, actuator, enclosure)	e.g. 0AB = Insert label			<input type="checkbox"/>	<input type="checkbox"/>	<input type="checkbox"/>										
Color	e.g. 10 = Black, 20 = Red						<input type="checkbox"/>	<input type="checkbox"/>								
Marking	e.g. 0AA = None 0AB = ON 0AT = EMERGENCY STOP									<input type="checkbox"/>	<input type="checkbox"/>	<input type="checkbox"/>				
Ambient condition	Standard ATEX Zone 21-22: Protection from dust ATEX Zone 1-2: Intrinsic safety										0 1 2					
Example		3SU1	9	0	0	-	0	A	B	2	0	-	0	A	B	0

Note:

The Article No. schemes show an overview of product versions for better understanding of the logic behind the article numbers.

For your orders, please use the article numbers quoted in the selection and ordering data.

Application

Environmental conditions

The pushbuttons and indicator lights are climate-proof (KTW 24) and suitable for standard industrial applications and operation in marine applications.

Simple electrical equipment

Non-illuminated actuators, contact modules, enclosures and special accessories can be classified as simple electrical equipment according to IEC 60079-11. This means that they may be used in intrinsically safe circuits in potentially explosive atmospheres. An overview of the devices and atmospheres can be found in Confirmation No. 3287.01.

Safety EMERGENCY STOP pushbuttons according to ISO 13850

For controls according to IEC/EN 60204-1, the SIRIUS ACT mushroom pushbuttons are suitable for use as safety EMERGENCY STOP pushbuttons.

Safety circuits

The IEC/EN 60947-5-1 standard requires positive opening. This means that for the purpose of personal safety, the reliable opening of NC contacts in all safety circuits is expressly prescribed for the electrical equipment of machines and is designated according to IEC 60947-5-1 with the symbol (⊖).

Category 4 according to EN ISO 13849-1 can be attained with the EMERGENCY STOP mushroom pushbuttons if the corresponding fail-safe evaluation units are selected and correctly installed, e.g. the 3SK11 safety relays or the 3RK3 Modular Safety System ([see page 11/1 onwards](#)) or matching units from the ASIsafe, SIMATIC or SINUMERIK product ranges.

The SIRIUS ACT pushbuttons and indicator lights can be connected to the AS-Interface communication system quickly and safely.

The following solutions are available:

- AS-Interface modules
- AS-Interface module in safety-related version for EMERGENCY STOP mushroom pushbutton
- Ready-fitted AS-Interface enclosures with 1 to 6 command points

IO-Link

The SIRIUS ACT pushbuttons and indicator lights can be connected to IO-Link quickly and safely. The connection is made via a special IO-Link module.

SIRUS ACT 3SU Series

General Data

Technical specifications

More information

Industry Mall, see www.siemens.com/product?3SU1

Configurator, see www.siemens.com/sirius-act/configurator

Conversion tool, see www.siemens.com/sirius/conversion-tool

Manual, see <https://support.industry.siemens.com/cs/ww/en/view/107542462>

Type	3SU1..0-AA 3SU1..0-JA	3SU1..1-AA 3SU1..1-JA	3SU1..0-AB 3SU1..0-BB 3SU1..0-CB 3SU1..0-DB 3SU1..0-JB	3SU1..1-AB 3SU1..1-BB 3SU1..1-JB
Product version	Pushbuttons			
Operating principle of the actuating element	Latching		Momentary contact	
Optional expansion of product by light source	No	Yes	No	Yes
Mechanical endurance (operating cycles) typical	500 000		10 000 000	3 000 000
Switching frequency maximum	1/h	1 800	3 600	
Shock resistance according to IEC 60068-2-27	Half-sine wave 50 g / 11 ms			
Vibration resistance according to IEC 60068-2-6	10 ... 500 Hz: 5 g			
Degree of protection	IP66, IP67, IP69 (IP69K)			
Environmental category during operation According to IEC 60721	3M6, 3S2, 3B2, 3C3, 3K6 (with a relative air humidity of 10 ... 95%)			
Ambient temperature				
• During operation	°C	-25 ... +70		
• During storage	°C	-40 ... +80		

Type	3SU1.00-AA 3SU1.00-BA 3SU1.00-CA 3SU1.30-AA 3SU1.30-BA 3SU1.50-AA 3SU1.50-BA 3SU1.50-CA	3SU1.50-EA	3SU1.01-AA 3SU1.01-BA 3SU1.51-AA 3SU1.51-BA 3SU1.51-CA	3SU1.00-AD 3SU1.00-BD 3SU1.00-CD 3SU1.30-AD 3SU1.30-BD 3SU1.50-AD 3SU1.50-BD 3SU1.50-CD	3SU1.50-ED	3SU1.01-AD 3SU1.01-BD 3SU1.31-AD 3SU1.31-BD
Product version	Mushroom pushbuttons					
Operating principle of the actuating element	Latching			Momentary contact		
Optional expansion of product by light source	No		Yes	No		Yes
Mechanical endurance (operating cycles) typical	500 000	300 000	500 000	10 000 000	300 000	3 000 000
Switching frequency maximum	1/h	1 800		3 600	1 800	3 600
Shock resistance according to IEC 60068-2-27	Half-sine wave 50 g / 11 ms					
Vibration resistance according to IEC 60068-2-6	10 ... 500 Hz: 5 g					
Degree of protection	IP66, IP67, IP69 (IP69K)	IP65, IP67, IP69 (IP69K)	IP66, IP67, IP69 (IP69K)		IP65, IP67, IP69 (IP69K)	IP66, IP67, IP69 (IP69K)
Environmental category during operation According to IEC 60721	3M6, 3S2, 3B2, 3C3, 3K6 (with a relative air humidity of 10 ... 95%)					
Ambient temperature						
• During operation	°C	-25 ... +70				
• During storage	°C	-40 ... +80				

SIRUS ACT 3SU Series




General data

Type	3SU1...-J 3SU1...-H 3SU1...-G
Product version	EMERGENCY STOP mushroom pushbuttons
Mechanical endurance (operating cycles)	300 000
Switching frequency maximum	1/h 600
Shock resistance according to IEC 60068-2-27	Half-sine wave 50 g / 11 ms
Vibration resistance according to IEC 60068-2-6	10 ... 500 Hz: 5 g
Degree of protection	IP66, IP67, IP69 (IP69K)
Environmental category during operation According to IEC 60721	3M6, 3S2, 3B2, 3C3, 3K6 (with a relative air humidity of 10 ... 95%)
Ambient temperature	
• During operation	°C -25 ... +70
• During storage	°C -40 ... +80

Type	3SU1.5.-2A 3SU1.5.-2B 3SU1.5.-2C 3SU1.5.-2D 3SU1.5.-2E	3SU1.0.-2A 3SU1.0.-2B 3SU1.0.-2C 3SU1.3.-2A 3SU1.3.-2B 3SU1.3.-2C	3SU1.0.-3E 3SU1.3.-3E 3SU1.5.-3E	3SU1.0.-4B 3SU1.0.-4C 3SU1.0.-4D 3SU1.0.-4F 3SU1.0.-4G 3SU1.0.-4H 3SU1.0.-4J 3SU1.0.-4L 3SU1.0.-5B 3SU1.0.-5H 3SU1.0.-5P 3SU1.0.-5Q 3SU1.0.-5R 3SU1.0.-5S 3SU1.0.-5T 3SU1.0.-5X	3SU1...-4B 3SU1...-4C 3SU1...-4D 3SU1...-4F 3SU1...-4G 3SU1...-4H 3SU1...-4J 3SU1...-4L 3SU1...-5B 3SU1...-5H 3SU1...-5K 3SU1...-5L 3SU1...-5P 3SU1...-5Q 3SU1...-5R 3SU1...-5S 3SU1...-5T 3SU1...-5X	3SU1.0.-7A 3SU1.0.-7B 3SU1.3.-7A 3SU1.3.-7B 3SU1.5.-7A 3SU1.5.-7B
Product version	Selector switches		Toggle switches	Key-operated switches		Coordinate switches
Mechanical endurance (operating cycles)	300 000	1 000 000		300 000	250 000	
Switching frequency maximum	1/h 1 800				3 600	
Shock resistance according to IEC 60068-2-27	Half-sine wave 50 g / 11 ms					
Vibration resistance according to IEC 60068-2-6	10 ... 500 Hz: 5 g					
Degree of protection	IP66, IP67, IP69 (IP69K)		IP66, IP67, IP69K	IP66, IP67, IP69 (IP69K)		IP65, IP67
Ambient temperature						
• During operation	°C -25 ... +70					
• During storage	°C -40 ... +80					




SIRUS ACT 3SU Series

General data

Type		3SU1400- .AA10-1.A0	3SU1400- 1AA10-1GA0, 3SU1400- 1AA10-1RA0	3SU1400- 1AA10-1HA0	3SU1400- .AA10-3.A0	3SU1400- 1AA10-3HA0	3SU1400- 3AA10-5.A0
Product version		Contact modules					
Rated insulation voltage	V	500					
Pollution degree		3					
Impulse withstand voltage, rated value	kV	6					
Operational voltage type		AC/DC					
Operational voltage, rated value							
• At AC at 50 Hz	V	5 ... 500					
• At DC	V	5 ... 500					
Thermal current	A	10					
Operational current, rated value							
• At AC-12							
- At 24 V	A	10					
- At 230 V	A	8					
• At AC-15							
- At 24 V	A	6					
- At 230 V	A	6					
- At 400 V	A	3					
- At 500 V	A	1.4					
• At DC-12							
- At 24 V	A	10					
- At 48 V	A	5					
- At 110 V	A	2.5					
- At 230 V	A	1					
- At 400 V	A	0.3					
- At 500 V	A	0.3					
• At DC-13							
- At 24 V	A	3					
- At 48 V	A	1.5					
- At 110 V	A	0.7					
- At 230 V	A	0.3					
- At 400 V	A	0.1					
- At 500 V	A	0.1					
Contact reliability		One contact failure per 100 million switching operations (17 V, 5 mA), one contact failure per 10 million switching operations (5 V, 1 mA)					
Mechanical endurance (operating cycles) typical		10 000 000					
Switching frequency maximum	1/s	3 600					
Fuse link version required for short-circuit protection of the auxiliary switch with type of coordination 1		gG / Dz 10 A, quick-response / Dz 10 A					
Continuous current of miniature circuit breaker C characteristic	A	10					
Vibration resistance according to IEC 60068-2-6		10 ... 500 Hz: 5 g					
Shock resistance according to IEC 60068-2-27		Half-sine wave 50 g / 11 ms					
Climate class during operation according to IEC 60721		3M6, 3S2, 3B2, 3C3, 3K6 (with a relative air humidity of 10 ... 95%, no condensation permitted in operation)					
Ambient temperature							
• During operation	°C	-25 ... +70					
• During storage	°C	-40 ... +80					
Degree of protection							
• Of enclosure		IP40					
Type of electrical connection		Screw terminals 		Spring-type terminals 		Socket terminals (THT) 	
Type of connectable conductor cross-sections							
• Solid with end sleeve	mm ²	2 x (0.5 ... 0.75)		--		--	
• Solid without end sleeve	mm ²	2 x (1.0 ... 1.5)		2 x (0.25 ... 1.5)		--	
• Finely stranded with end sleeve	mm ²	2 x (0.5 ... 1.5)		2 x (0.25 ... 0.75)		--	
• Finely stranded without end sleeve	mm ²	2 x (1.0 ... 1.5)		2 x (0.25 ... 1.5)		--	
• For AWG cables		2 x (18 ... 14)		2 x (24 ... 16)		--	
Tightening torque for screw terminals	Nm	0.8 ... 0.9		--		--	

SIRUS ACT 3SU Series

General data








Type	3SU1401-.....-1	3SU1401-.....-3	3SU1401-.....-5
Product version	LED module		
Light source integrated in product	Yes		
Type of light source	LED		
Rated insulation voltage	V	320	
Pollution degree	3		
Impulse withstand voltage, rated value	kV	4	
Relative positive tolerance of the operational voltage	%	20	
Relative negative tolerance of the operational voltage	%	20	
Operating time typical	h	100 000	
Vibration resistance according to IEC 60068-2-6	10 ... 500 Hz: 5 g		
Shock resistance according to IEC 60068-2-27	Half-sine wave 50 g / 11 ms		
Environmental category during operation According to IEC 60721	3M6, 3S2, 3B2, 3K6 (with a relative air humidity of 10 ... 95%, no condensation permitted in operation)		
Ambient temperature			
• During operation	°C	-25 ... +70	
• During storage	°C	-40 ... +80	
Type of electrical connection	Screw terminals  Spring-type terminals  Socket terminals (THT) 		

Type	3SU1400-1LK10-1AA1	3SU1400-1LK10-3AA1	3SU1400-1LL10-1BA1	3SU1400-1LL10-3BA1
Product designation	Interface module		Fail-safe interface module	
Operational voltage type	DC			
Supply voltage at DC rated value	V	24		
Current consumed, maximum	mA	150		
Product function at the interface 1 PROFINET IO-Device	Yes			
Type of interface Fast Ethernet interface	Yes			
Type of interface 1 RJ45 (Ethernet) interface	Yes			
Number of ports at the interface 1	1			
Number of modules per rack, maximum	20			
Number of digital outputs	0		1	
Number of digital inputs	0		4	
Software version required for STEP 7 in the TIA Portal	Integrated in the TIA Portal, version 14 SP1 or higher (HSP for V13 and V14)			
SIL response limit (subsystem) according to IEC 62061	--		SIL CL 3	
Performance level (PL) according to EN ISO 13849-1	--		e	
Ambient temperature				
• During operation	°C	60 ... -25		
• During storage	°C	80 ... -40		
Connectable conductor cross-section				
• Solid				
- With end sleeves	mm ²	0.2 ... 2.5		
• Finely stranded				
- With end sleeves	mm ²	0.25 ... 2.5		
- Without end sleeves	mm ²	0.2 ... 2.5		

3SU1 22 mm, Round, Plastic, Black — Actuating & Signaling Elements

Pushbuttons

Selection and ordering data

Version of actuating element Front ring version	Operating principle Unlatching method	Color, marking	SD	Article No.	Price per PU	PU (UNIT, SET, M)	PS*
Pushbuttons							
 3SU1000-0AB20-0AD0	Pushbuttons with flat button Standard	Momentary contact	Black	▶	3SU1000-0AB10-0AA0	1	1 unit
		Black, "O"	▶	3SU1000-0AB10-0AD0	1	1 unit	
		Red	▶	3SU1000-0AB20-0AA0	1	1 unit	
		Red, "O"	▶	3SU1000-0AB20-0AD0	1	1 unit	
		Yellow	▶	3SU1000-0AB30-0AA0	1	1 unit	
		Green	▶	3SU1000-0AB40-0AA0	1	1 unit	
		Green, "I"	▶	3SU1000-0AB40-0AC0	1	1 unit	
		Blue	▶	3SU1000-0AB50-0AA0	1	1 unit	
		Blue, "R"	5	3SU1000-0AB50-0AR0	1	1 unit	
		White	▶	3SU1000-0AB60-0AA0	1	1 unit	
		White, "I"	▶	3SU1000-0AB60-0AC0	1	1 unit	
		Clear	▶	3SU1000-0AB70-0AA0	1	1 unit	
		Gray	▶	3SU1000-0AB80-0AA0	1	1 unit	
 3SU1000-0AA30-0AA0	Latching Push to unlatch	Black	▶	3SU1000-0AA10-0AA0	1	1 unit	
		Red	▶	3SU1000-0AA20-0AA0	1	1 unit	
		Yellow	3	3SU1000-0AA30-0AA0	1	1 unit	
		Green	▶	3SU1000-0AA40-0AA0	1	1 unit	
		Blue	▶	3SU1000-0AA50-0AA0	1	1 unit	
		White	▶	3SU1000-0AA60-0AA0	1	1 unit	
 3SU1000-0BB30-0AA0	Pushbuttons with raised button Standard	Momentary contact	Black	▶	3SU1000-0BB10-0AA0	1	1 unit
		Red	▶	3SU1000-0BB20-0AA0	1	1 unit	
		Yellow	5	3SU1000-0BB30-0AA0	1	1 unit	
		Green	▶	3SU1000-0BB40-0AA0	1	1 unit	
		Blue	▶	3SU1000-0BB50-0AA0	1	1 unit	
		White	▶	3SU1000-0BB60-0AA0	1	1 unit	
 3SU1000-0CB40-0AA0	Pushbuttons with flat button Raised	Momentary contact	Black	3	3SU1000-0CB10-0AA0	1	1 unit
		Red	5	3SU1000-0CB20-0AA0	1	1 unit	
		Yellow	5	3SU1000-0CB30-0AA0	1	1 unit	
		Green	5	3SU1000-0CB40-0AA0	1	1 unit	
		Blue	5	3SU1000-0CB50-0AA0	1	1 unit	
		White	5	3SU1000-0CB60-0AA0	1	1 unit	
 3SU1000-0DB50-0AA0	Pushbuttons with flat button Raised, castellated	Momentary contact	Black	3	3SU1000-0DB10-0AA0	1	1 unit
		Red	5	3SU1000-0DB20-0AA0	1	1 unit	
		Yellow	5	3SU1000-0DB30-0AA0	1	1 unit	
		Green	5	3SU1000-0DB40-0AA0	1	1 unit	
		Blue	5	3SU1000-0DB50-0AA0	1	1 unit	
		White	5	3SU1000-0DB60-0AA0	1	1 unit	
Front ring	Operating principle	Colors caps/markings	Direction of Actuation	SD	Screw terminals 	PU (UNIT, SET, M)	PS*
				d	Article No.	Price	
 3SU1000-3FB11-0AA0	Plastic, Black	Momentary Action	Black, None	Up/Down/Left/Right	3SU1000-3FB11-0AA0	1	1 unit
	Plastic, Black	Momentary Action	Black, Arrows	Up/Down/Left/Right	3SU1000-3FB11-0AU0	1	1 unit