

Figure similar

MLFB-Ordering data      1FK2102-1AG10-1SA0

Client order no. :  
Order no. :  
Offer no. :  
Remarks :

Item no. :  
Consignment no. :  
Project :

| Basic motor data        |   | Mechanical data               |                      |
|-------------------------|---|-------------------------------|----------------------|
| Motor type              | Permanent-magnet synchronous motor, Natural cooling, IP64 | Design acc. to Code I         | IM B5 (IM V1, IM V3) |
| Motor type              | High Dynamic  | Vibration severity grade      | Grade A              |
| Static torque           | 0.32 Nm   | Shaft height                  | 20                   |
| Static current          | 0.8 A   | Flange size (AB)              | 40 mm                |
| Maximum torque          | 1.11 Nm   | Centering ring (N)            | 30 mm                |
| Maximum current         | 3.0 A   | Hole circle (M)               | 46 mm                |
| Maximum speed           | 8000 rpm  | Screw-on hole (S)             | 4.5 mm               |
| Rotor moment of inertia | 0.040 kgcm <sup>2</sup>                                   | Overall length (LB)           | 137 mm               |
| Weight                  | 0.9 kg  | Diameter of shaft (D)         | 8 mm                 |
|                         |   | Length of shaft (E)           | 25 mm                |
|                         |   | Length of flange diagonal (P) | 54 mm                |
|                         |   | Shaft extension               | Fitted key           |

### Rated data

SINAMICS S210, 1AC 230V

|               |          |
|---------------|----------|
| Rated speed   | 3000 rpm |
| Rated torque  | 0.32 Nm  |
| Rated current | 0.8 A    |
| Rated power   | 0.10 kW  |

### Encoder system

|                |  |
|----------------|--|
| Encoder system | Encoder AS22DQC: Absolute encoder single turn 22 bit |
|----------------|--|

### Motor connection

|                 |              |
|-----------------|--------------|
| Connection type | OCC for S210 |
| Connector size  | M12          |

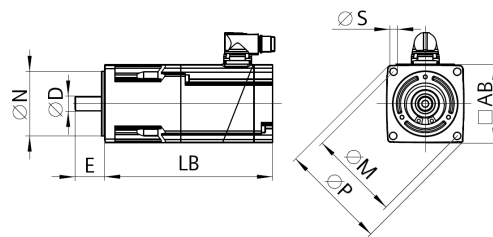
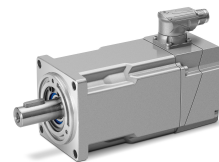


Figure similar



MLFB-Ordering data

1FK2102-1AG10-1SA0

Figure similar

## Holding brake

Holding torque 0.32 Nm

Opening time 25 ms

Closing time 8 ms

Maximum single switching energy <sup>1)</sup> 7.4 J

Service life, operating energy 1750 J

Holding current 0.1 A

Break-induced current for 500 ms <sup>2)</sup> 0.6 A

<sup>1)</sup> Up to three consecutive emergency stops and up to 25% of all emergency stops as a W<sub>max</sub> high energy stop possible.

<sup>2)</sup> Typical value for 20°C ambient temperature. At -15°C the break-induced currents can be increased by up to 30%.