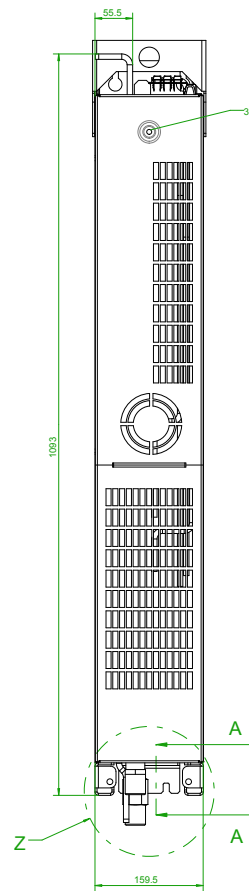


PE¹⁾

A-A

Wasser - Rücklauf
Anschlussgewinde 3/4"
Anzugsdrehmoment 60Nm
water return flow
connection thread 3/4"
tightening torque 60Nm

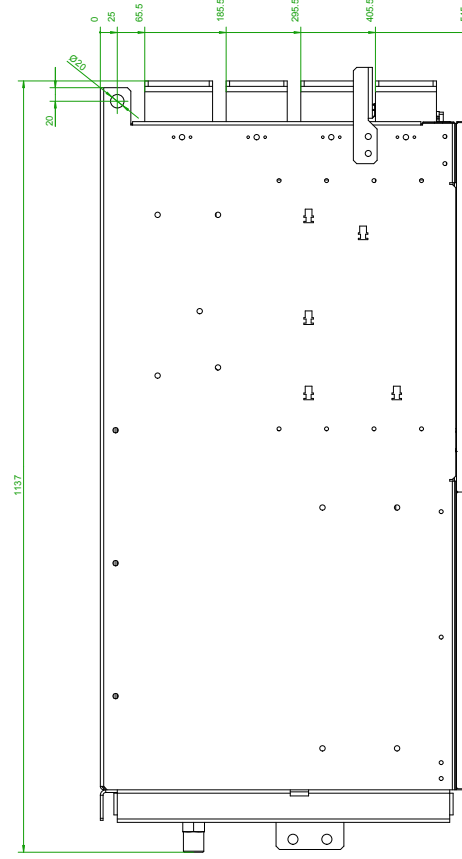
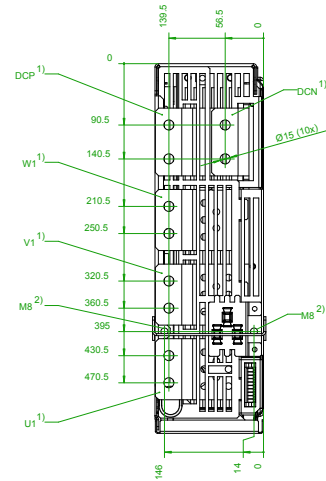
Wasser - Vorlauf
Anschlussgewinde 3/4"
Anzugsdrehmoment 60 Nm
water set up
connection thread 3/4"
tightening torque 60Nm



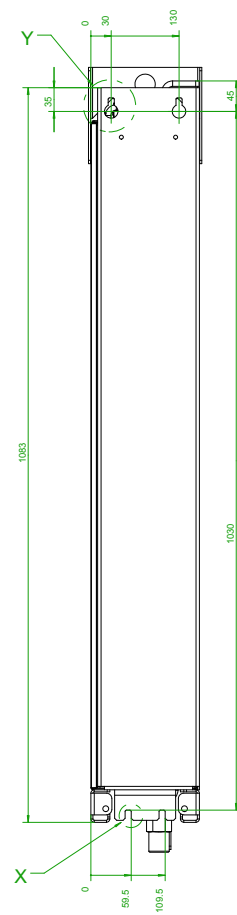
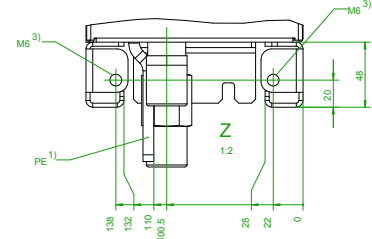
Z

A

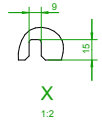
A



1137

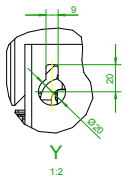


X



X

1:2



Y

1:2

- 1) Anzugsdrehmoment für M12 = 50 Nm (±15%)
tightening torque for M12 = 50 Nm (±15%)
- 2) Anzugsdrehmoment für M8 = 25 Nm (±15%)
tightening torque for M8 = 25 Nm (±15%)
- 3) Anzugsdrehmoment für M6 = 10 Nm (±15%)
tightening torque for M6 = 10 Nm (±15%)

Einheit / unit: mm	SINAMICS S120: 6SL3335-1TE41-2AA3
Allg. Toleranz: ISO 2768-mK; Tolerierung ISO 8015 / Gen. tolerance: ISO 2768-mK; tolerance ISO 8015	Optionen / options: Gewichte / mass:
Maßstab / scale: ohne / without	Bemerkung / notice:
CAD CREATOR 2.2 (WWW-Version V02.20.00.00)	Druckdatum / print date: 04.04.2017