

MLFB-Ordering data 1FG1501-1QD26-2AW1-Z  
D12+G23+K08+Q93

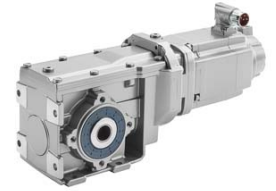


Figure similar

Client order no. :

Order no. :

Offer no. :

Remarks :

Item no. :

Consignment no. :

Project :

### Gearbox data

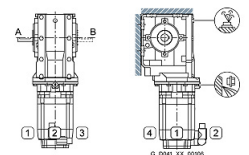
<b>Gear box type</b>	B29	<b>Radial force maximum</b>	4130 N
<b>Gearbox basic type</b>	Bevel geared	<b>Max. permissible radial force with Mmax</b>	4120 N
<b>Gearbox size</b>	29	<b>Moment of inertia</b>	0.07 kgcm <sup>2</sup>
<b>Transmission stages</b>	2	<b>Torsional stiffness</b>	13 Nm/°
<b>Transmission (ratio)</b>	32.78	<b>Efficiency</b>	0.93
<b>Gear number relation</b>	295/9	<b>Mounting position</b>	M2-A
<b>Output moment maximum (short-time)</b>	112 Nm	<b>Mounting type</b>	Foot-mounted
<b>max. input speed (briefly)</b>	4500 rpm	<b>Output shaft version</b>	Solid shaft standard
<b>Output speed short-time</b>	137 rpm	<b>Output shaft dimension</b>	V20x40 mm
<b>Emergency off output moment (1000 cycles)</b>	187 Nm	<b>Gearbox flange diameter</b>	-/-
		<b>Output shaft bearing</b>	No
		<b>Figure 2 torque support</b>	-

### General tech. specifications

<b>Degree of protection</b>	IP65
<b>Color of the housing</b>	Standard painting (Anthracite RAL 7016)
<b>Specification</b>	CE / UL / CSA / EAC / cRUus
<b>Net weight</b>	10.22 kg
<b>1m-sound pressure level L<sub>pA</sub> (ToI.+3dB(A))</b>	65
<b>Plug position</b>	left (3)
<b>Connector size</b>	1

### Lubrication and sealing

<b>Gear oil</b>	Polyglycol oil CLP ISO PG VG460
<b>Output shaft sealing</b>	Seal longer service life
<b>Oil charge</b>	0.60 l



MLFB-Ordering data 1FG1501-1QD26-2AW1-Z  
D12+G23+K08+Q93



Figure similar

Motor data		Limiting data	
Motor type	Permanent-magnet synchronous motor	Maximum speed (short-time)	9000 rpm
Motor type	Compact	Maximum torque	10.50 Nm
DC-link voltage, max.	510...720V	Motor current short term	15.3 A
Shaft height	48 mm	<b>Optimum operating point</b>	
Cooling	Natural cooling	Optimum speed	4800 rpm
Rated speed	6000 rpm	Optimum power	0.86 kW
Rated torque (100K)	1.23 Nm	<b>Recommended Motor Module</b>	
Rated power	0.77 kW	Rated inverter current	5.0 A
Rated current (100K)	2.15 A	Maximum inverter current	15.0 A
Static torque	2.85 Nm	Maximum torque	10.3 Nm
Static current	4.25 A		
Moment of inertia	2.90 kgcm <sup>2</sup>		
Efficiency $\eta$	88 %		
Temperature monitoring	Pt1000 temperature sensor		
Encoder system	Encoder AS20DQI: absolute encoder single-turn 20 bits		

### Info servo geared motor

Outside the standard temperature range of -10 to +40 °C, further selectable options must be observed, in addition to the lubricant selection.

Further, you have to check the suitability of the components and options used for the requested temperature range.

MLFB-Ordering data 1FG1501-1QD26-2AW1-Z  
D12+G23+K08+Q93

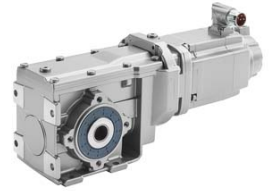


Figure similar

### Options

D12	M2-A for bevel and worm gearboxes
G23	Seal longer service life
K08	Polyglycol oil CLP ISO PG VG460
Q93	Plug position left

### Standards

**Compliance with standards** CE / UL / CSA / EAC / cRUus

**CE marking** EN 60034