

MLFB-Ordering data 1FG1102-1UC26-2FA1-Z
D01+K06+N23

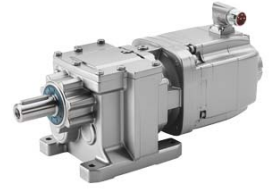


Figure similar

Client order no. :

Order no. :

Offer no. :

Remarks :

Item no. :

Consignment no. :

Project :

Gearbox data

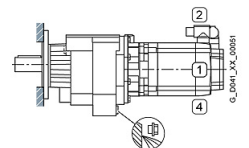
Gear box type	Z29	Radial force maximum	1190 N
Gearbox basic type	Helical geared	Max. permissible radial force with Mmax	1190 N
Gearbox size	29	Moment of inertia	0.91 kgcm ²
Transmission stages	2	Torsional stiffness	6 Nm/°
Transmission (ratio)	3.47	Efficiency	0.96
Gear number relation	243/70	Mounting position	M1
Output moment maximum (short-time)	14 Nm	Mounting type	Flange version (A type)
max. input speed (briefly)	4350 rpm	Output shaft version	Solid shaft standard
Output speed short-time	1254 rpm	Output shaft dimension	V25x50 mm
Emergency off output moment (1000 cycles)	119 Nm	Gearbox flange diameter	120 mm
		Output shaft bearing	No
		Figure 2 torque support	-

General tech. specifications

Degree of protection	IP65
Color of the housing	Standard painting (Anthracite RAL 7016)
Specification	CE / UL / CSA / EAC / cRUus
Net weight	7.64 kg
1m-sound pressure level L_{pA} (ToI.+3dB(A))	65
Plug position	top (default) (2)
Connector size	1

Lubrication and sealing

Gear oil	Mineral oil CLP ISO VG220
Output shaft sealing	Standard
Oil charge	0.20 l



MLFB-Ordering data 1FG1102-1UC26-2FA1-Z
D01+K06+N23

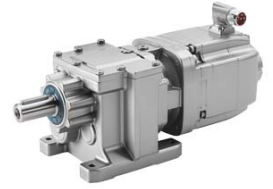


Figure similar

Motor data		Limiting data	
Motor type	Permanent-magnet synchronous motor	Maximum speed (short-time)	10000 rpm
Motor type	Compact	Maximum torque	4.50 Nm
DC-link voltage, max.	510...720V	Motor current short term	6.5 A
Shaft height	36 mm	Optimum operating point	
Cooling	Natural cooling	Optimum speed	6000 rpm
Rated speed	6000 rpm	Optimum power	0.41 kW
Rated torque (100K)	0.65 Nm	Recommended Motor Module	
Rated power	0.41 kW	Rated inverter current	3.0 A
Rated current (100K)	1.09 A	Maximum inverter current	9.0 A
Static torque	1.01 Nm	Maximum torque	4.5 Nm
Static current	1.50 A	Holding brake	
Moment of inertia	0.75 kgcm ²	Holding brake	with holding brake
Efficiency η	87 %	Holding brake version	Permanent-magnet brake
Temperature monitoring	Pt1000 temperature sensor	Power supply voltage	DC 24 V \pm 10 %
Encoder system	Resolver R15DQ: resolver 15 bits (resolution 32768, internal multi-pole)	Braking torque M_{1Br} / M_{2Br}	1.00 Nm
		Holding torque M_{4Br}	1.90 Nm
		Opening time	50.0 ms
		Closing time	30.0 ms
		Maximum switching energy per braking action	40.0 J

Info servo geared motor

Outside the standard temperature range of -10 to +40 °C, further selectable options must be observed, in addition to the lubricant selection.

Further, you have to check the suitability of the components and options used for the requested temperature range.

MLFB-Ordering data 1FG1102-1UC26-2FA1-Z
D01+K06+N23

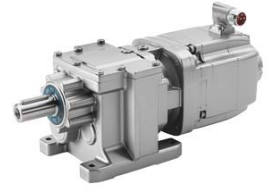


Figure similar

Options

D01	M1 for helical and parallel shaft gearboxes
K06	Mineral oil CLP ISO VG220
N23	Standard holding brake (permanent magnet brake)

Standards

Compliance with standards CE / UL / CSA / EAC / cRUus

CE marking EN 60034