

Figure similar

MLFB-Ordering data 1FG1501-1QD26-2AW1-Z  
D12+G23+K08

Client order no. :

Order no. :

Offer no. :

Remarks :

Item no. :

Consignment no. :

Project :

### Gearbox data

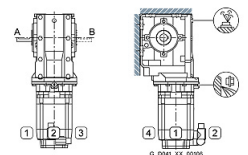
Gear box type	B29	Radial force maximum	4130 N
Gearbox basic type	Bevel geared	Max. permissible radial force with Mmax	4120 N
Gearbox size	29	Moment of inertia	0.07 kgcm <sup>2</sup>
Transmission stages	2	Torsional stiffness	13 Nm/°
Transmission (ratio)	32.78	Efficiency	0.93
Gear number relation	295/9	Mounting position	M2-A
Output moment maximum (short-time)	112 Nm	Mounting type	Foot-mounted
max. input speed (briefly)	4500 rpm	Output shaft version	Solid shaft standard
Output speed short-time	137 rpm	Output shaft dimension	V20x40 mm
Emergency off output moment (1000 cycles)	187 Nm	Gearbox flange diameter	-/-
		Output shaft bearing	No
		Figure 2 torque support	-

### General tech. specifications

Degree of protection	IP65
Color of the housing	Standard painting (Anthracite RAL 7016)
Specification	CE / UL / CSA / EAC / cRUus
Net weight	10.22 kg
1m-sound pressure level L <sub>pA</sub> (ToI.+3dB(A))	65
Plug position	top (default) (2)
Connector size	1

### Lubrication and sealing

Gear oil	Polyglycol oil CLP ISO PG VG460
Output shaft sealing	Seal longer service life
Oil charge	0.60 l



MLFB-Ordering data 1FG1501-1QD26-2AW1-Z  
D12+G23+K08

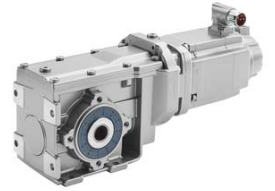


Figure similar

Motor data		Limiting data	
Motor type	Permanent-magnet synchronous motor	Maximum speed (short-time)	9000 rpm
Motor type	Compact	Maximum torque	10.50 Nm
DC-link voltage, max.	510...720V	Motor current short term	15.3 A
Shaft height	48 mm	<b>Optimum operating point</b>	
Cooling	Natural cooling	Optimum speed	4800 rpm
Rated speed	6000 rpm	Optimum power	0.86 kW
Rated torque (100K)	1.23 Nm	<b>Recommended Motor Module</b>	
Rated power	0.77 kW	Rated inverter current	5.0 A
Rated current (100K)	2.15 A	Maximum inverter current	15.0 A
Static torque	2.85 Nm	Maximum torque	10.3 Nm
Static current	4.25 A		
Moment of inertia	2.90 kgcm <sup>2</sup>		
Efficiency $\eta$	88 %		
Temperature monitoring	Pt1000 temperature sensor		
Encoder system	Encoder AS20DQI: absolute encoder single-turn 20 bits		

### Info servo geared motor

Outside the standard temperature range of -10 to +40 °C, further selectable options must be observed, in addition to the lubricant selection.

Further, you have to check the suitability of the components and options used for the requested temperature range.

# SIEMENS

## Data sheet for SIMOTICS S-1FG1

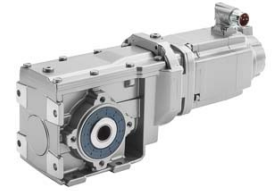


Figure similar

MLFB-Ordering data 1FG1501-1QD26-2AW1-Z  
D12+G23+K08

### Options

D12	M2-A for bevel and worm gearboxes
G23	Seal longer service life
K08	Polyglycol oil CLP ISO PG VG460

### Standards

**Compliance with standards** CE / UL / CSA / EAC / cRUus

**CE marking** EN 60034