

MLFB-Ordering data 1FG1503-9QE32-2DH1-Z  
D11+G23+G60+H3K+K07+Y84

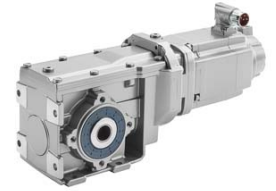


Figure similar

Client order no. :

Order no. :

Offer no. :

Remarks :

Item no. :

Consignment no. :

Project :

### Gearbox data

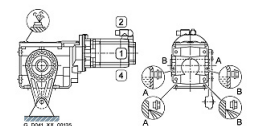
<b>Gear box type</b>	B49	<b>Radial force maximum</b>	4250 N
<b>Gearbox basic type</b>	Bevel geared	<b>Max. permissible radial force with Mmax</b>	4130 N
<b>Gearbox size</b>	49	<b>Moment of inertia</b>	1.50 kgcm <sup>2</sup>
<b>Transmission stages</b>	2	<b>Torsional stiffness</b>	30 Nm/°
<b>Transmission (ratio)</b>	8.29	<b>Efficiency</b>	0.96
<b>Gear number relation</b>	2255/272	<b>Mounting position</b>	M1-A
<b>Output moment maximum (short-time)</b>	275 Nm	<b>Mounting type</b>	Torque plate
<b>max. input speed (briefly)</b>	4500 rpm	<b>Output shaft version</b>	Hollow shaft SimoLoc inch
<b>Output speed short-time</b>	543 rpm	<b>Output shaft dimension</b>	HF1.4375"
<b>Emergency off output moment (1000 cycles)</b>	560 Nm	<b>Gearbox flange diameter</b>	-/-
		<b>Output shaft bearing</b>	No
		<b>Figure 2 torque support</b>	1

### General tech. specifications

<b>Degree of protection</b>	IP65
<b>Color of the housing</b>	Standard painting (Anthracite RAL 7016)
<b>Specification</b>	CE / UL / CSA / EAC / cRUus
<b>Net weight</b>	27.40 kg
<b>1m-sound pressure level L<sub>pA</sub> (ToI.+3dB(A))</b>	70
<b>Plug position</b>	top (default) (2)
<b>Connector size</b>	1

### Lubrication and sealing

<b>Gear oil</b>	Polyglycol oil CLP ISO PG VG220
<b>Output shaft sealing</b>	Seal longer service life
<b>Oil charge</b>	1.00 l



MLFB-Ordering data 1FG1503-9QE32-2DH1-Z  
D11+G23+G60+H3K+K07+Y84



Figure similar

Motor data		Limiting data	
Motor type	Permanent-magnet synchronous motor	Maximum speed (short-time)	4200 rpm
Motor type	Compact	Maximum torque	35.00 Nm
DC-link voltage, max.	510...720V	Motor current short term	18.5 A
Shaft height	63 mm	<b>Optimum operating point</b>	
Cooling	Natural cooling	Optimum speed	2000 rpm
Rated speed	2000 rpm	Optimum power	1.67 kW
Rated torque (100K)	8.00 Nm	<b>Recommended Motor Module</b>	
Rated power	1.68 kW	Rated inverter current	5.0 A
Rated current (100K)	4.10 A	Maximum inverter current	15.0 A
Static torque	10.10 Nm	Maximum torque	29.5 Nm
Static current	4.90 A		
Moment of inertia	14.70 kgcm <sup>2</sup>		
Efficiency $\eta$	91 %		
Temperature monitoring	Pt1000 temperature sensor		
Encoder system	Encoder AS20DQI: absolute encoder single-turn 20 bits		

### Info servo geared motor

Outside the standard temperature range of -10 to +40 °C, further selectable options must be observed, in addition to the lubricant selection.

Further, you have to check the suitability of the components and options used for the requested temperature range.

MLFB-Ordering data 1FG1503-9QE32-2DH1-Z  
D11+G23+G60+H3K+K07+Y84

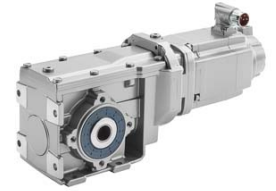


Figure similar

### Options

D11	M1-A for bevel and worm gearboxes
G23	Seal longer service life
G60	Protective cover
H3K	Hollow shaft Simoloc inch
K07	Polyglycol oil CLP ISO PG VG220
Y84	

### Standards

**Compliance with standards** CE / UL / CSA / EAC / cRUus

**CE marking** EN 60034