

Figure similar

MLFB-Ordering data 1FG1502-1PD26-2FL1-Z
D26+G23+H05+K07

Client order no. :

Order no. :

Offer no. :

Remarks :

Item no. :

Consignment no. :

Project :

Gearbox data

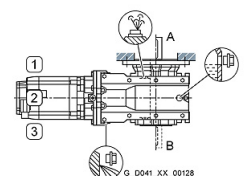
| | | | |
|--|--------------|--|-------------------------|
| Gear box type | B39 | Radial force maximum | 5530 N |
| Gearbox basic type | Bevel geared | Max. permissible radial force with Mmax | 5530 N |
| Gearbox size | 39 | Moment of inertia | 0.67 kgcm ² |
| Transmission stages | 2 | Torsional stiffness | 40 Nm/° |
| Transmission (ratio) | 14.02 | Efficiency | 0.95 |
| Gear number relation | 715/51 | Mounting position | M6-B |
| Output moment maximum (short-time) | 139 Nm | Mounting type | Flange version (A type) |
| max. input speed (briefly) | 4500 rpm | Output shaft version | Solid shaft standard |
| Output speed short-time | 321 rpm | Output shaft dimension | V30x60 mm |
| Emergency off output moment (1000 cycles) | 425 Nm | Gearbox flange diameter | 200 mm |
| | | Output shaft bearing | No |
| | | Figure 2 torque support | - |

General tech. specifications

| | |
|---|--|
| Degree of protection | IP65 |
| Color of the housing | Standard painting (Anthracite RAL 7016) |
| Specification | CE / UL / CSA / EAC / cRUus |
| Net weight | 15.75 kg |
| 1m-sound pressure level L_{pA} (ToI.+3dB(A)) | 65 |
| Plug position | top (default) (2) |
| Connector size | 1 |

Lubrication and sealing

| | |
|-----------------------------|------------------------------------|
| Gear oil | Polyglycol oil CLP ISO PG VG220 |
| Output shaft sealing | Seal longer service life |
| Oil charge | 0.80 l |



MLFB-Ordering data 1FG1502-1PD26-2FL1-Z
D26+G23+H05+K07

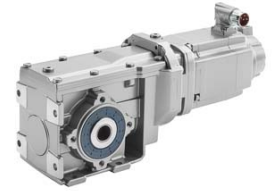


Figure similar

| Motor data | | Limiting data | |
|------------------------|--|---------------------------------|----------|
| Motor type | Permanent-magnet synchronous motor | Maximum speed (short-time) | 9000 rpm |
| Motor type | Compact | Maximum torque | 10.50 Nm |
| DC-link voltage, max. | 510...720V | Motor current short term | 15.3 A |
| Shaft height | 48 mm | Optimum operating point | |
| Cooling | Natural cooling | Optimum speed | 4800 rpm |
| Rated speed | 6000 rpm | Optimum power | 0.86 kW |
| Rated torque (100K) | 1.23 Nm | Recommended Motor Module | |
| Rated power | 0.77 kW | Rated inverter current | 5.0 A |
| Rated current (100K) | 2.15 A | Maximum inverter current | 15.0 A |
| Static torque | 2.85 Nm | Maximum torque | 10.3 Nm |
| Static current | 4.25 A | | |
| Moment of inertia | 2.90 kgcm ² | | |
| Efficiency η | 88 % | | |
| Temperature monitoring | Pt1000 temperature sensor | | |
| Encoder system | Resolver R14DQ: resolver 14 bits (resolution 16384, internal 2-pole) | | |

Info servo geared motor

Outside the standard temperature range of -10 to +40 °C, further selectable options must be observed, in addition to the lubricant selection.

Further, you have to check the suitability of the components and options used for the requested temperature range.

MLFB-Ordering data 1FG1502-1PD26-2FL1-Z
D26+G23+H05+K07

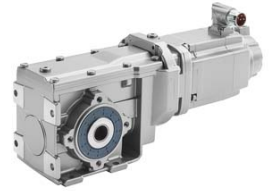


Figure similar

Options

| | |
|-----|-----------------------------------|
| D26 | M6-B for bevel and worm gearboxes |
| G23 | Seal longer service life |
| H05 | Gearbox flange diameter 200mm |
| K07 | Polyglycol oil CLP ISO PG VG220 |

Standards

Compliance with standards CE / UL / CSA / EAC / cRUus

CE marking EN 60034