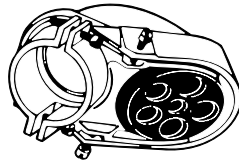


## Accessories

### Aluminum Service Caps — Clamp-Type for Rigid/Intermediate or Thinwall



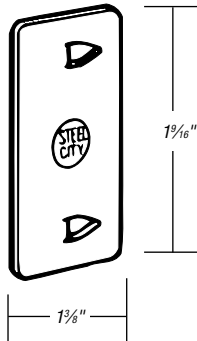
CAT. NO.	CONDUIT SIZE (IN.)	NO. HOLES	SIZE	STD. CTN.
SH-101	½	4	4 (1/64")	50
SH-102	¾	5	2 (9/8") 3 (13/32")	50
SH-103	1	5	2 (7/16") 3 (1/2")	10
SH-104	1¼	5	2 (17/32") 3 (9/8")	10
SH-105	1½	6	2 (3/32") 1 (1/16") 3 (9/4")	5
SH-106	2	6	2 (3/4") 3 (1") 1 (17/32")	5
SH-107	2½	7	3 (7/8") 1 (1") 3 (13/16")	1
SH-108	3	7	4 (1 1/8") 3 (1 1/4")	1
SH-109	3½	4	4 (1 3/4") 2 (1 1/8")	1
SH-110	4	4	4 (1 3/4") 2 (1 1/8")	1

CSA File No. LR-12798.  
UL File No. E-13938.

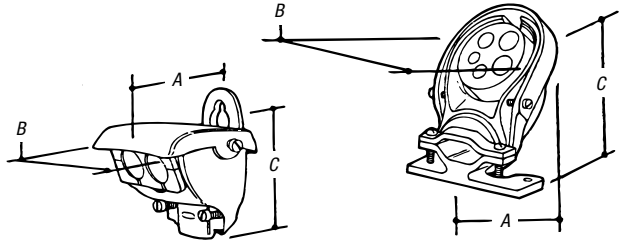
### Cable Protector



CAT. NO.	DESCRIPTION	STD. CTN.
CP-1	Steel	100



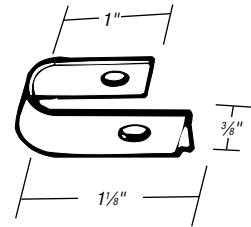
### Service Cable Caps — Oval



CAT. NO.	FITS CABLE	DIMENSIONS (IN.)			STD. CTN.
		A	B	C	
50130	To 2/0-3	5.00	3.31	4.75	10
50130A	To 4/0-3	6.75	4.62	6.00	5
<i>With Split Insulator</i>					
SC1000	3#3-2	2.37	2.12	2.25	25
SC2001	3#3/0-4/0	4.93	3.12	3.75	10

Extra-large body for additional wiring space.

### Cable Clip



CAT. NO.	DESCRIPTION	STD. CTN.
NS 100	Steel	1,000