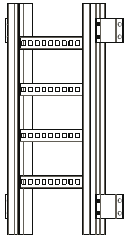


Metallic — aluminum

Clamps and hardware

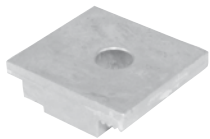
A



Hold-down clamp

For vertical applications.

Cat. No.	Type	Material	Design load
ABW-HDCS	Single	Aluminum	600 lb./pair
ABW-HDCD	Double		1000 lb./pair



Combination hold-down/expansion-guide clamp

Hardware supplied with one bolt and one springless strut nut, $\frac{3}{8}$ " diameter.

Cat. No.	Material
ABW-HEC	Aluminum
ABW-HEC-HDW	



Aluminum tray hardware

Square-shoulder self-positioning carriage bolt.

Cat. No.	Material	Description
SPW-1/4-CB	Zinc-plated steel	$\frac{1}{4}$ " carriage bolt
SPW-3/8-CB		$\frac{3}{8}$ " carriage bolt
SPW-1/4-HN		$\frac{1}{4}$ " hex. nut
SPW-3/8-HN		$\frac{3}{8}$ " hex. nut
SPW-3/8-HWK*	316 Stainless	Zinc-plated steel hardware kit
SSW-3/8-CB		$\frac{3}{8}$ " carriage bolt
SSW-3/8-HN		$\frac{3}{8}$ " hex. nut
SSW-3/8-HWK*		316 Stainless steel hardware kit



Self-drilling tapping screw

Cat. No.	Material	Description
SPW-10-SCR	Zinc-plated steel	Self-drilling tapping screw
SSW-10-SCR	Stainless steel	

T&B aluminum cable tray is composed of two distinct systems, H-style and U-style. These systems are interchangeable.

Metallic — steel

Clamps and hardware

A



Self-drilling tapping screw

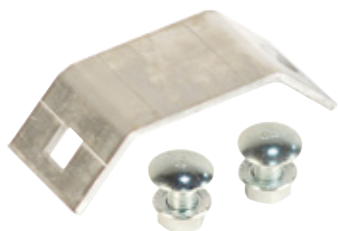
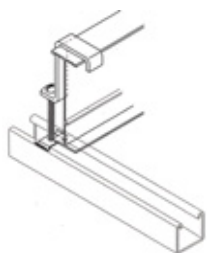
Cat. No.	Material	Description
SPW-10-SCR	Zinc-plated steel	Self-drilling tapping screw
SSW-10-SCR	Stainless steel	



Hold-down clamp

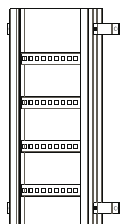
Cat. No.	Material prefix	Side rail height (in.)
(Prefix)-3-HDC	SPW — Pregalvanized	3
(Prefix)-4-HDC	SHW — Hot-dipped galvanized	4
(Prefix)-5-HDC	SSW — Stainless steel 316	5
(Prefix)-6-HDC		6
(Prefix)-7-HDC		7

Note: Hardware included. Kit contains one bolt and one spring nut.



Hold-down clamp

Cat. No.	Type	Material	Design load
SPWHDCS	Single	SPW — Pregalvanized	800 lb./pair
SHWHDCS	Single	SHW — Hot-dipped galvanized	
SSWHDCS	Single	SSW — Stainless steel 316	
SPWHDCD	Double	SPW — Pregalvanized	1500 lb./pair
SHWHDCD	Double	SHW — Hot-dipped galvanized	
SSWHDCD	Double	SSW — Stainless steel 316	



For vertical applications