

Dual-rated mechanical connectors

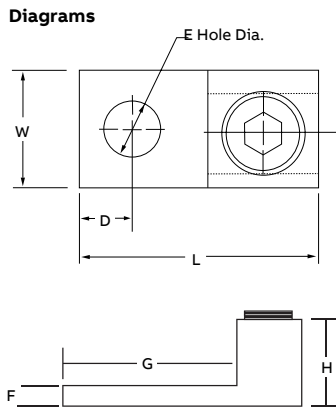
Type ADR-ALCÜL™ – Single conductor, one-hole mount



- For copper and aluminum conductors
- Easy installation – no special tools required
- Tin-plated for low contact resistance
- CSA certified and UL listed, AL9CU, 600 V rated
- All aluminum bodies
- Slotted screw on lugs up through 2/0 AWG str.; 5/16 socket screw on sizes 250 through 350 kcmil; 3/8 hex socket on sizes 500 kcmil and above



Cat. no.	Conductor range (AWG or kcmil)		Dimensions (in.)						
	Max.	Min.	L	W	H	D	E	F	G
Slotted screw									
ADR6	6 str.	14 A	1 3/64	1/2	31/64	19/64	1/4	5/64	43/64
ADR2	2 str.	14 A	1 5/32	1/2	9/16	19/64	1/4	7/64	11/16
ADR11	1/0 str.	14 A	1 15/32	5/8	25/32	7/16	1/4	3/16	27/32
ADR21	2/0 str.	14 A	1 15/32	5/8	25/32	7/16	1/4	3/16	27/32
Socket screw									
ADR25	250	6 str.	2	1	1 1/8	15/32	5/16	1/4	1
ADR30	300	6 str.	2	1	1 1/8	15/32	5/16	1/4	1
ADR35	350	6 str.	2 1/4	1 1/8	1 1/4	1/2	3/8	1/4	1 1/8
ADR50	500	4 str.	2 13/16	1 1/2	1 9/16	3/4	3/8	5/16	1 19/32
ADR60	600	2 str.	3 3/16	1 1/2	1 9/16	13/16	3/8	7/16	1 13/16
ADR6004*	600 (2) 250	4 str. (2) 1/0 str.	2 13/16	1 3/8	1 13/16	5/8	3/8	5/16	1 1/2
ADR80	800	300	3 3/8	1 3/4	1 15/16	7/8	5/8	1/2	1 3/4
ADR99	1000	500	3 3/8	1 3/4	1 15/16	7/8	5/8	1/2	1 3/4



* UL and CSA not applicable.

Type ADR-ALCÜL – Anti-rotational connector



- Unique bottom rib keeps connector from turning
- Eliminates the need for excessive torque, which can damage large conductors
- Prevents connector loosening, even in heavy-vibration applications



Cat. no.	Conductor range (AWG or kcmil)		Bolt hole (in.)	Figure
	Max.	Min.		
ADR21-AR	2/0	14	1/4	1
ADR30-AR	300	6	7/16	1
ADR35-AR	350	6	5/16	1
ADR60-AR	600	2	1/2	1
ADR35-21-AR	350	6	3/8	2
ADR60-21-AR	600	2	1/2	2

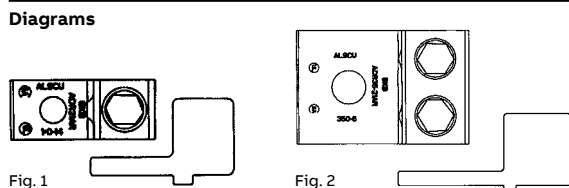


Fig. 1

Fig. 2

Dual-rated mechanical connectors

Type ADR-ALCÜL – Single conductor, two-hole mount*



Fig. 1

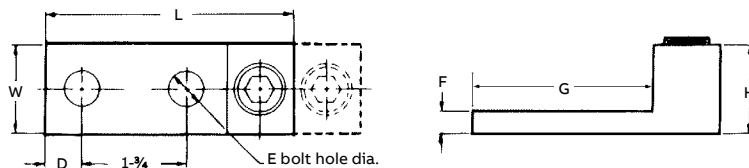
Fig. 2

- For copper and aluminum conductors
- Easy installation – no special tools required
- Tin-plated for low contact resistance
- All aluminum bodies



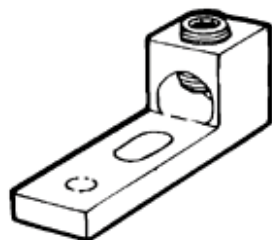
Cat. no.	Figure	Conductor range Al or Cu (AWG or kcmil)		Dimensions (in.)						
		Max.	Min.	L	W	H	D	E	F	G
ADR35-12	1	350	6 str.	4 $\frac{3}{4}$	1 $\frac{1}{4}$	1 $\frac{3}{8}$	$\frac{5}{8}$	$\frac{1}{2}$	$\frac{5}{16}$	3
ADR60-12D	2	600	2 str.	5 $\frac{5}{16}$	1 $\frac{1}{2}$	1 $\frac{1}{2}$	$\frac{5}{8}$	$\frac{1}{2}$	$\frac{3}{8}$	3 $\frac{1}{16}$
ADR80-12D	2	800	300	6 $\frac{3}{16}$	1 $\frac{3}{4}$	1 $\frac{7}{8}$	$\frac{5}{8}$	$\frac{1}{2}$	$\frac{9}{16}$	3 $\frac{7}{16}$
ADR99-12D	2	1,000	350	6 $\frac{3}{16}$	1 $\frac{3}{4}$	1 $\frac{7}{8}$	$\frac{5}{8}$	$\frac{1}{2}$	$\frac{9}{16}$	3 $\frac{7}{16}$

Diagrams



* NEMA spacing: 1 $\frac{3}{4}$ in. centers.
Connectors accommodating conductors 600 kcmil and larger have double row of set screws (D suffix).

Type ADR-ALCÜL – Single conductor, switchgear mount

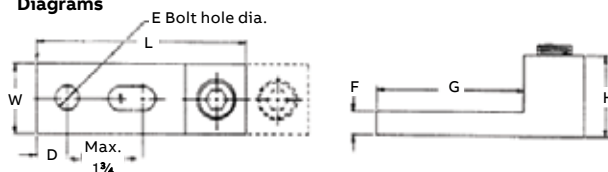


- For copper and aluminum conductors
- Easy installation – no special tools required
- Tin-plated for low contact resistance
- All aluminum bodies



Cat. no.	Conductor range Al or Cu (AWG or kcmil)		Dimensions (in.)						
	Max.	Min.	L	W	H	D	E	F	G
ADR35-12S	350	4 str.	4 $\frac{11}{16}$	1 $\frac{1}{4}$	1 $\frac{9}{16}$	$\frac{23}{32}$	$\frac{1}{2}$	$\frac{7}{16}$	3 $\frac{3}{16}$
ADR80-12DS	800	300	6 $\frac{3}{16}$	1 $\frac{5}{8}$	1 $\frac{7}{8}$	$\frac{23}{32}$	$\frac{1}{2}$	$\frac{9}{16}$	3 $\frac{7}{16}$

Diagrams



* NEMA spacing: 1 $\frac{3}{4}$ in. centers except ADR25-12S: 1 in. centers.
Connectors accommodating conductors 600 kcmil and larger have double row of set screws (D suffix).

Dual-rated mechanical connectors

Type ASL-ALCÜL – Two conductors, one-hole mount

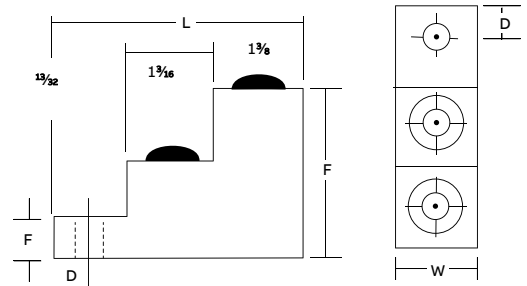


- For copper and aluminum conductors
- Easy installation – no special tools required
- Tin-plated for low contact resistance
- All aluminum bodies



Cat. no.	Conductor range (AWG or kcmil)		Dimensions (in.)						Mtg. hole dia. (in.)
	Max.	Min.	L	W	H	D	F		
ASL30-21	300	6 str.	3	1 1/8	2	15/32	1/2	5/16	

Diagrams



Type ASL-ALCÜL – Two conductors, two-hole mount

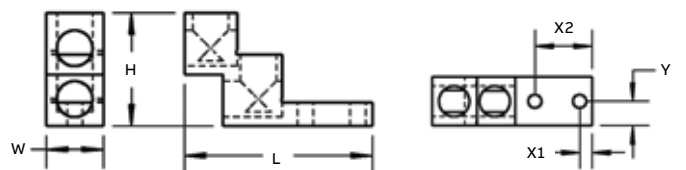


- For copper and aluminum conductors
- Easy installation – no special tools required
- Tin-plated for low contact resistance
- All aluminum bodies



Cat. no.	Conductor range (AWG or kcmil)		Dimensions (in.)					
	Max.	Min.	L	W	H	X1	X2	Y1
ASL60-22	600	2 str.	4.91	1.50	2.96	0.375	1.75	0.75
ASL75-22	750	3/0 str.	4.91	1.69	2.96	0.375	1.75	0.84

Diagrams



Dual-rated mechanical connectors

Type ADR-ALCÜL – Two conductors, one-hole mount



- For copper and aluminum conductors
- Easy installation – no special tools required
- Tin-plated for low contact resistance
- All aluminum bodies



Diagrams	Conductor range (AWG or kcmil)				Dimensions (in.)						
	Cat. no.	Max.	Min.	L	W	H	D	E	F	G	I
	ADR11-21	1/0 str.	14	1 ¹⁵ / ₃₂	1 ⁷ / ₃₂	2 ⁵ / ₃₂	7/ ₁₆	1/4	3/ ₁₆	2 ⁷ / ₃₂	3 ⁵ / ₆₄
	ADR21-21	2/0 str.	14	1 ¹⁵ / ₃₂	1 ¹ / ₄	2 ⁵ / ₃₂	2 ⁷ / ₆₄	1/4	3/ ₁₆	2 ⁷ / ₃₂	2 ¹ / ₃₂
	ADR25-21	250	6 str.	2 ⁹ / ₁₆	1 ⁴³ / ₆₄	1 ³ / ₁₆	7/ ₈	3/ ₈	1/4	1 ⁹ / ₁₆	1 ¹³ / ₁₆
	ADR35-21	350	6 str.	2 ⁷ / ₈	1 ⁵⁹ / ₆₄	1 ¹ / ₄	7/ ₈	1/2	1/4	1 ³ / ₄	6 ¹ / ₆₄
	ADR60-21	600	2 str.	3 ³ / ₁₆	2 ¹³ / ₃₂	1 ⁹ / ₁₆	5/ ₈	1/2	7/ ₁₆	1 ¹³ / ₁₆	1 ⁷ / ₃₂
	ADR80-21	800	300	3 ³ / ₈	3 ³ / ₁₆	1 ¹⁵ / ₁₆	7/ ₈	5/ ₈	1/2	1 ³ / ₄	1 ⁵ / ₈
	ADR99-21	1000	500	3 ³ / ₈	3 ³ / ₁₆	1 ¹⁵ / ₁₆	7/ ₈	5/ ₈	1/2	1 ³ / ₄	1 ⁵ / ₈

Type ADR-ALCÜL – Two conductors, two-hole mount*



- For copper and aluminum conductors
- Easy installation – no special tools required
- Tin-plated for low contact resistance
- All aluminum bodies



Cat. no.	Figure	Conductor range (AWG or kcmil)				Dimensions (in.)						
		Max.	Min.	L	W	H	D	E	F	G	I	
ADR35-22	1	350	6 str.	4 ¹ / ₄	2 ¹⁹ / ₆₄	1 ³ / ₈	5/ ₈	1/2	5/ ₁₆	3	1 ⁷ / ₃₂	
ADR60-22D	2	600	2 str.	5 ⁵ / ₁₆	2 ³ / ₄	1 ¹ / ₂	5/ ₈	1/2	3/ ₈	3 ³ / ₁₆	1 ⁷ / ₁₆	
ADR80-22D	2	800	300	6 ³ / ₁₆	3 ¹ / ₂	1 ⁷ / ₈	5/ ₈	1/2	9/ ₁₆	3 ³ / ₁₆	1 ¹³ / ₁₆	
ADR99-22D	2	1000	350	6 ³ / ₁₆	3 ¹ / ₂	1 ⁷ / ₈	5/ ₈	1/2	9/ ₁₆	3 ³ / ₁₆	1 ¹³ / ₁₆	

Diagrams

* NEMA spacing: 1³/₄ in. centers.
Connectors accommodating conductors 600 kcmil and larger have double row of set screws (D suffix).

Dual-rated mechanical connectors

Type ASL-ALCÜL – Three conductors, two-hole mount

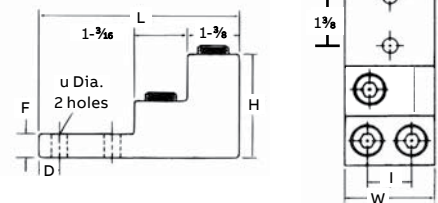


- For copper and aluminum conductors
- Easy installation – no special tools required
- Tin-plated for low contact resistance
- All aluminum bodies



Cat. no.	Conductor range (AWG or kcmil)			Dimensions (in.)								
	Max.	Min.		L	W	H	F	D	I	X2	X1	Y
ASL60-32	600	2 str.		$4^{29/32}$	$2\frac{1}{2}$	3	$\frac{3}{4}$	$\frac{3}{8}$	$1\frac{1}{32}$	1.75	0.375	1.234

Diagrams



Type ASL-ALCÜL – Four conductors, two-hole mount

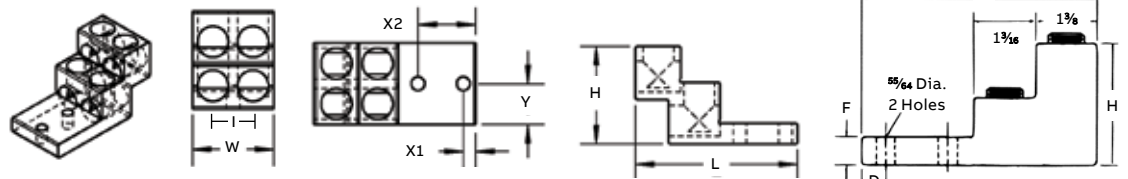


- For copper and aluminum conductors
- Easy installation – no special tools required
- Tin-plated for low contact resistance
- All aluminum bodies



Cat. no.	Conductor range (AWG or kcmil)			Dimensions (in.)								
	Max.	Min.		L	W	H	F	D	I	X2	X1	Y
ASL60-42	600	2 str.		$4^{29/32}$	$2\frac{1}{2}$	3	$\frac{3}{4}$	$\frac{3}{8}$	$1\frac{1}{32}$	1.75	0.375	1.234
ASL75-42	750	3/0 str.		$4^{29/32}$	$2^{31/50}$	3	$\frac{3}{4}$	$\frac{3}{8}$	$1\frac{1}{16}$	1.75	0.375	1.31

Diagrams



Dual-rated mechanical connectors

Type ADR-ALCÜL – Three conductors, two-hole mount*

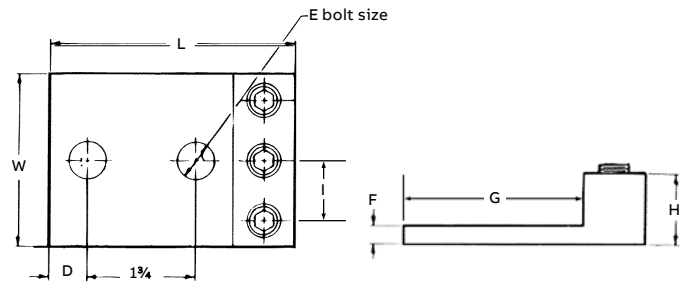
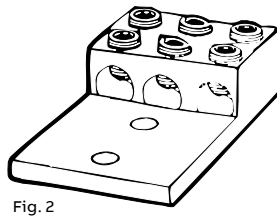
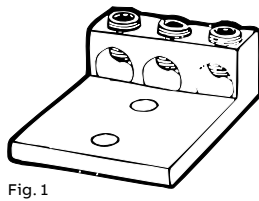


- For copper and aluminum conductors
- Easy installation – no special tools required
- Tin-plated for low contact resistance
- CSA certified and UL listed
- All aluminum bodies



Cat. no.	Figure	Conductor range (AWG or kcmil)		Dimensions (in.)								
		Max.	Min.	L	W	H	D	E	F	G	I	
ADR02-32	1	2 str.	14	2 ³ / ₁₆	1 ⁵ / ₈	5 ⁵ / ₈	1 ¹ / ₃₂	5 ¹ / ₁₆	3 ¹ / ₁₆	1 ¹¹ / ₁₆	9 ¹ / ₁₆	
ADR11-32	1	1/0 str.	14	2 ²⁹ / ₃₂	2	7 ⁷ / ₈	1 ¹ / ₃₂	3 ³ / ₈	1 ¹ / ₄	2 ⁵ / ₃₂	4 ⁵ / ₆₄	
ADR31-32	1	3/0 str.	6 str.	4	2 ¹³ / ₁₆	1 ³ / ₁₆	5 ⁵ / ₈	1 ¹ / ₂	5 ¹ / ₁₆	3	3 ¹ / ₃₂	
ADR25-32	1	250	6 str.	4 ³ / ₁₆	2 ¹³ / ₁₆	1 ¹ / ₄	5 ⁵ / ₈	1 ¹ / ₂	1 ¹ / ₄	3 ³ / ₁₆	3 ¹ / ₃₂	
ADR35-32	1	350	6 str.	4 ³ / ₁₆	3 ³ / ₁₆	1 ¹ / ₄	5 ⁵ / ₈	1 ¹ / ₂	1 ¹ / ₄	3 ³ / ₁₆	1 ¹ / ₃₂	
ADR50-32	1	500	4 str.	4 ¹¹ / ₁₆	3 ³ / ₄	1 ⁹ / ₁₆	5 ⁵ / ₈	1 ¹ / ₂	7 ¹ / ₁₆	3 ⁵ / ₁₆	1 ¹ / ₄	
ADR60-32D	2	600	2 str.	5 ⁵ / ₁₆	4 ³ / ₁₆	1 ¹ / ₂	5 ⁵ / ₈	1 ¹ / ₂	3 ³ / ₈	3 ³ / ₁₆	1 ⁷ / ₁₆	
ADR80-32	2	800	300	6 ³ / ₁₆	4 ¹ / ₂	1 ⁷ / ₈	5 ⁵ / ₈	1 ¹ / ₂	9 ¹ / ₁₆	3 ⁷ / ₁₆	1 ⁹ / ₁₆	
ADR99-32	2	1000	500	6 ³ / ₁₆	4 ³ / ₄	1 ⁷ / ₈	5 ⁵ / ₈	1 ¹ / ₂	9 ¹ / ₁₆	3 ⁷ / ₁₆	1 ⁴ / ₆₄	

Diagrams



* NEMA spacing: 1³/₄ in. centers except ADR02-32; 7⁷/₈ in. centers and ADR11-32; 1 in. centers.
Connectors accommodating conductors 600 kcmil and larger have double row of set screws (D suffix).

Dual-rated mechanical connectors

Type ADR-ALCÜL – Three conductors, four-hole mount**



- For copper and aluminum conductors
- Easy installation – no special tools required
- Tin-plated for low contact resistance
- All aluminum bodies



Cat. no.	Figure	Conductor range (AWG or kcmil)		Dimensions (in.)								
		Max.	Min.	L	W	H	D	E	F	G	I	
ADR02-34	1	2 str.	14	2 ³ / ₁₆	1 ⁵ / ₈	⁵ / ₈	1 ¹ / ₃₂	⁵ / ₁₆	³ / ₁₆	1 ¹¹ / ₁₆	⁹ / ₁₆	
ADR11-34	1	1/0 str.	14	2 ²⁹ / ₃₂	2	⁷ / ₈	1 ¹ / ₃₂	³ / ₈	¹ / ₄	2 ⁵ / ₃₂	⁴⁵ / ₆₄	
ADR31-34	1	3/0 str.	6 str.	4	2 ¹³ / ₁₆	1 ³ / ₁₆	⁵ / ₈	¹ / ₂	⁵ / ₁₆	3	³ / ₃₂	
ADR25-34*	1	250	6 str.	4 ³ / ₁₆	2 ¹³ / ₁₆	1 ¹ / ₄	⁵ / ₈	¹ / ₂	¹ / ₄	3 ¹ / ₁₆	³ / ₃₂	
ADR35-34*	1	350	6 str.	4 ³ / ₁₆	3 ³ / ₁₆	1 ¹ / ₄	⁵ / ₈	¹ / ₂	¹ / ₄	3 ¹ / ₁₆	1 ¹ / ₃₂	
ADR50-34*	1	500	4 str.	4 ¹¹ / ₁₆	3 ³ / ₄	1 ¹ / ₁₆	⁵ / ₈	¹ / ₂	⁷ / ₁₆	3 ⁵ / ₁₆	1 ¹ / ₄	
ADR60-34D	2	600	2 str.	5 ⁵ / ₁₆	4 ³ / ₁₆	1 ¹ / ₂	⁵ / ₈	¹ / ₂	³ / ₈	3 ¹ / ₁₆	1 ⁷ / ₁₆	
ADR80-34*	2	800	300	6 ³ / ₁₆	4 ¹ / ₂	1 ⁷ / ₈	⁵ / ₈	¹ / ₂	⁹ / ₁₆	3 ⁷ / ₁₆	1 ⁹ / ₁₆	
ADR99-34*	2	1000	500	6 ³ / ₁₆	4 ³ / ₄	1 ⁷ / ₈	⁵ / ₈	¹ / ₂	⁹ / ₁₆	3 ⁷ / ₁₆	1 ⁴¹ / ₆₄	

Diagrams

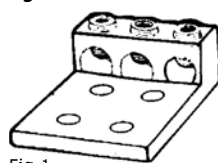


Fig. 1

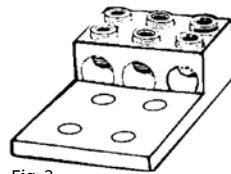
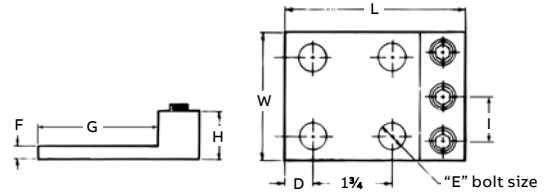


Fig. 2



* UL listed.

** NEMA spacing: 1³/₄ in. centers except ADR02-34; ⁷/₈ in. centers and ADR11-34; 1 in. centers.

Connectors accommodating conductors 600 kcmil and larger have double row of set screws (D suffix).

Type ADR-ALCÜL – Four conductors, four-hole mount*



Fig. 1



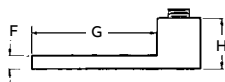
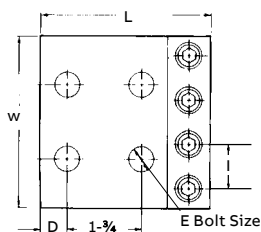
Fig. 2

- For copper and aluminum conductors
- Easy installation – no special tools required
- Tin-plated for low contact resistance
- All aluminum bodies



Cat. no.	Figure	Conductor range (AWG or kcmil)		Dimensions (in.)								
		Max.	Min.	L	W	H	D	E	F	G	I	
ADR25-44	1	250	6 str.	4	4 ¹ / ₁₆	1 ³ / ₁₆	⁵ / ₈	¹ / ₂	⁵ / ₁₆	3	1 ³ / ₆₄	
ADR35-44	1	350	6 str.	4 ¹ / ₄	4 ²³ / ₃₂	1 ³ / ₈	⁵ / ₈	¹ / ₂	⁵ / ₁₆	3	1 ⁷ / ₃₂	
ADR60-44D	2	600	2 str.	5 ⁵ / ₁₆	5 ⁵ / ₈	1 ¹ / ₂	⁵ / ₈	¹ / ₂	³ / ₈	3 ¹ / ₁₆	1 ⁷ / ₁₆	
ADR80-44D	2	800	350	6 ³ / ₁₆	7 ¹ / ₈	1 ⁷ / ₈	⁵ / ₈	¹ / ₂	⁹ / ₁₆	3 ⁷ / ₁₆	1 ¹³ / ₁₆	

Diagrams



* NEMA spacing: 1³/₄ in. centers.

Connectors accommodating conductors 600 kcmil and larger have double row of set screws (D suffix).

Dual-rated mechanical connectors

Type ASR-ALCÜL – Splice reducers with solid barrier wire stop

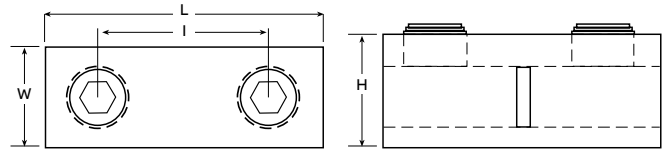


- For copper and aluminum conductors
- Easy installation – no special tools required
- Tin-plated for low contact resistance
- All aluminum bodies



Cat. no.	Conductor range Al or Cu (AWG or kcmil)		Dimensions (in.)			
	Max.	Min.	L	W	H	I
ASR0214*	2 str.	14	1¼	33/64	39/64	21/32
ASR1114*	1/0 str.	14	1½	39/64	23/32	51/64
ASR2506	250	6 str.	2½	55/64	31/32	17/64
ASR3506	350	6 str.	2¾	1½/32	1½	1¼
ASR7525**	750	250	6¼	1½/6	1¾	1½/6

Diagrams



* Slotted screws.

** Two set screws per end. CSA not applicable.

Type BX-ALCÜL – Rectangular connectors



- Recognized component in accordance with UL standard – 90 °C rating
- Anti-rotational boss
- For copper and aluminum conductors
- Easy installation – no special tools required
- Tin-plated for low contact resistance
- All aluminum bodies



Diagram	Cat. No.	Conductor range (AWG or kcmil)		Style & size of boss	Boss hole tapped	Dimensions (in.)		
		Max.	Min.			L	W	H
	BX0214	2	14 Cu 12 Al	Square 0.229 in.	10–32	15/32	15/32	9/16
	BX1114	1/0	14 Cu 12 Al	Square 0.229 in.	10–32	5/8	17/32	39/64

Tightening torque values for aluminum dual-rated socket screw connectors

AWG or kcmil size	Tightening torque (in.-lb)		AWG or kcmil size	Tightening torque (in.-lb)	
	Screwdriver	Wrench		Screwdriver	Wrench
12	20	75	4/0	–	200
10	20	75	250	–	200
8	20	75	350	–	200
6	35	100	500	–	300
4	35	100	600	–	300

AWG or kcmil size	Tightening torque (in.-lb)		AWG or kcmil size	Tightening torque (in.-lb)	
	Screwdriver	Wrench		Screwdriver	Wrench
2	50	125	700	–	300
1	50	125	750	–	300
1/0	50	150	800	–	300
2/0	50	150	1000	–	400
3/0	–	200	–	–	400