

CS480 STAINLESS STEEL PENDANT ARM SYSTEM



Fitting with Cover Removed

INDUSTRY STANDARDS

IEC 60529, IP66

APPLICATION

The CS480 Stainless Steel Pendant Arm System performs extremely well in applications that require corrosion resistance and suspension of process and control equipment for easy cleaning and washdown. CS480 is recommended for use with Stainless Steel HMI Enclosures with CS480 pendant cutout. The CS480 system has a high degree of design configuration flexibility. (For possible design combinations, see the System Combinations Drawings.) Used for lighter loads, the CS480 system's load rating at 3.3 ft. (1 m) is 89.6 lb. (40.7 kg). Ratings for other loads are shown in the Load Capacity chart.

SPECIFICATIONS

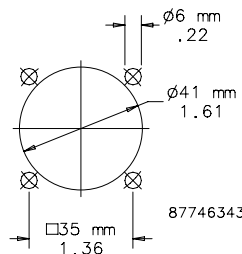
- Tubing clamps into position with setscrews for easy assembly and smooth appearance
- Fixed or swivel mounting, straight or at a 15-degree angle
- 90-degree fittings have a removable cover that allows easy access for wiring
- The coupling hole geometrics for enclosure machining are shown in the Coupling Hole Geometry diagram

FINISH

Tubing: Type 304 polished stainless steel
 Fittings: Type 304 polished stainless steel

Brushed stainless steel shown.

Coupling Hole Geometry for Enclosure Machining



SWIVEL BASE FOR EXTERNAL ATTACHMENT

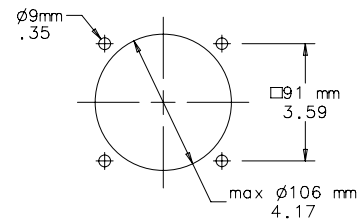
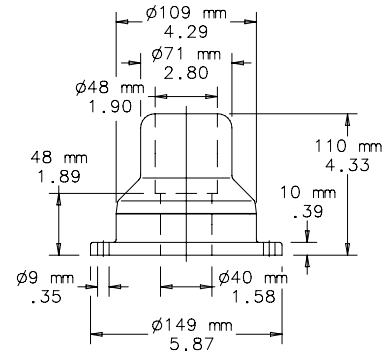


Swivel Base for mounting to machine or floor. Turns through 340 degrees with rotation limiter. Preset torque. Maintenance-free bearings. Type 304 polished stainless steel finish. Includes gaskets. Base-mounting fasteners not provided.

BULLETIN: CCR6



Catalog Number	Description	Product Weight (kg)	Product Weight (lb.)
CCSS48BBRE	Swivel base, external	4.2	9.5



87799217

NOTE: Recommended mounting hole size shown.

SWIVEL BASE FOR INTERNAL MOUNTING

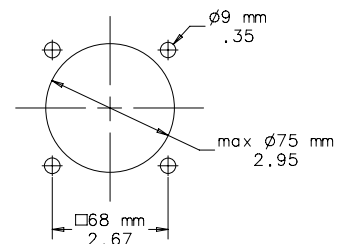
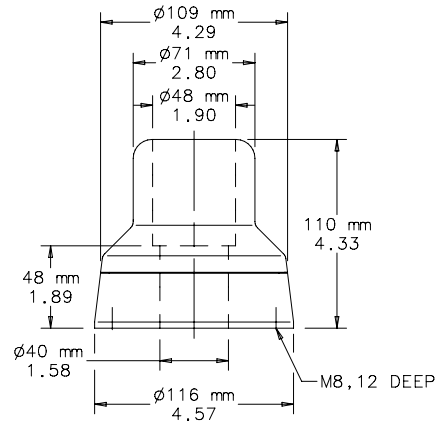


Swivel Base for mounting to machine or floor. Turns through 340 degrees with rotation limiter. Preset torque. Maintenance-free bearings. Type 304 polished stainless steel finish. Includes gaskets. Base-mounting fasteners not provided.

BULLETIN: CCR6



Catalog Number	Description	Product Weight (kg)	Product Weight (lb.)
CCSS48BBRI	Swivel base, internal	4.2	9.5



87746348

NOTE: Recommended mounting hole size shown.